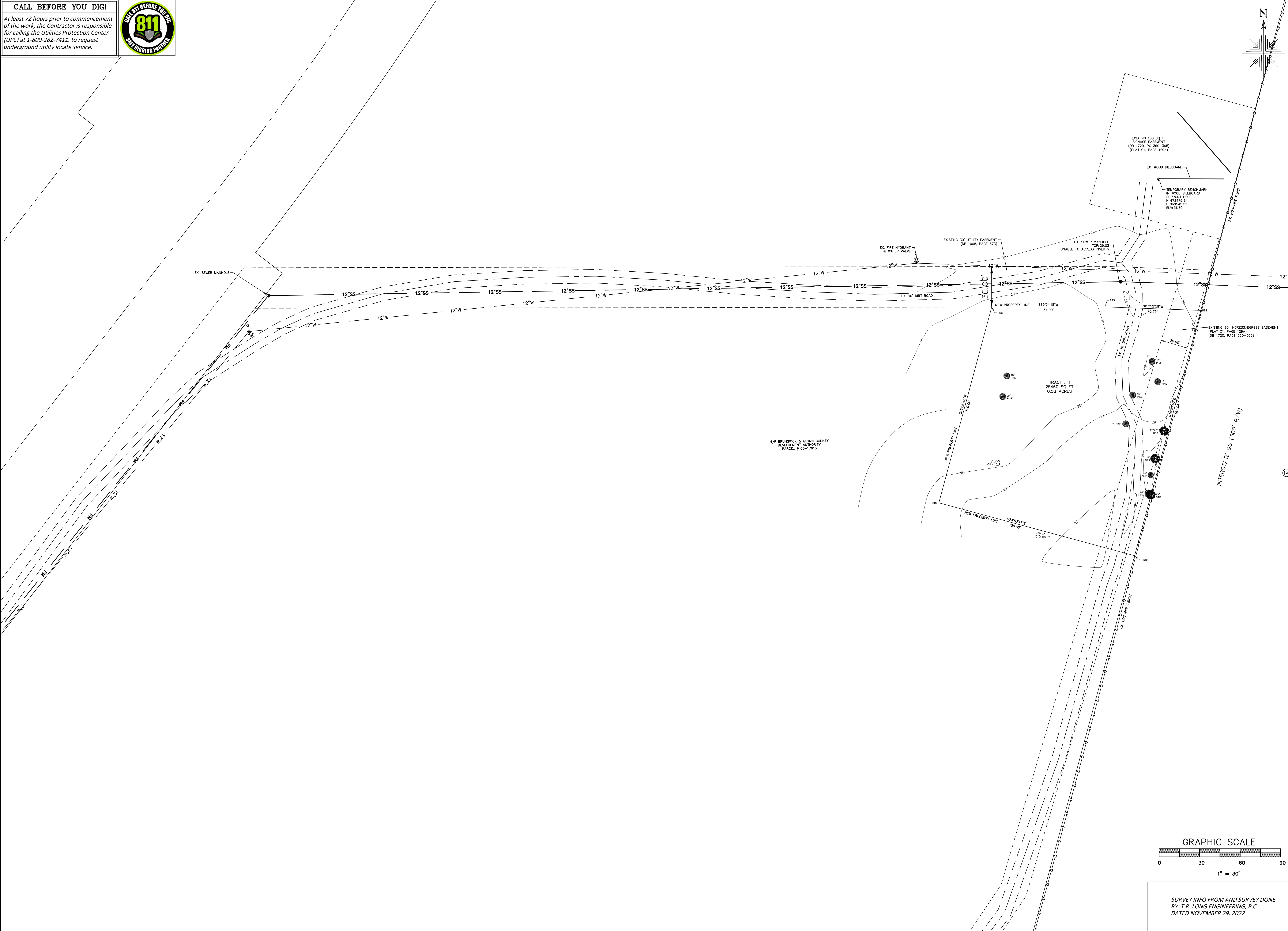


CALL BEFORE YOU DIG!

At least 72 hours prior to commencement of the work, the Contractor is responsible for calling the Utilities Protection Center (UPC) at 1-800-282-7411, to request underground utility locate service.

CALL 811 BEFORE YOU DIG

SAFE DIGGING PARTNER



BRUNSWICK-GLYNN JOINT WATER & SEWER COMMISSION
PLANNING & CONSTRUCTION DIVISION
1703 Gloucester Street
Brunswick, Georgia 31520
(912) 261-7110 Phone
(912) 261-7178 Fax
www.bgljwsc.org

BRUNSWICK-GLYNN JOINT WATER & SEWER COMMISSION

(Not issued for Construction)

NO.	DATE	COMMENTS
-	-	-
-	-	-
-	-	-
-	-	-
-	-	-

EXIT 42 750,000 GALLON ELEVATED STORAGE TANK
GLYNN COUNTY, GEORGIA
BRUNSWICK-GLYNN COUNTY JOINT WATER & SEWER COMMISSION

REVISIONS

SURVEY PLAT

FILE NO.: PROJ. #2213

DATE: -

SCALE: AS SHOWN

DRAWN BY: HP

SHEET NO.:

S-1

OF 1

SURVEY INFO FROM AND SURVEY DONE BY: T.R. LONG ENGINEERING, P.C.
DATED NOVEMBER 29, 2022

GRAPHIC SCALE
0 30 60 90
1" = 30'

CALL BEFORE YOU DIG!

At least 72 hours prior to commencement of the work, the Contractor is responsible for calling the Utilities Protection Center (UPC) at 1-800-282-7411, to request underground utility locate service.



JWSC WATER & SEWER NOTES

- ALL WATER AND SEWER CONSTRUCTION SHALL CONFORM WITH THE REQUIREMENTS OF THE DESIGN AND CONSTRUCTION STANDARDS AND SPECIFICATION OF THE BRUNSWICK-GLYNN JOINT WATER & SEWER COMMISSION. IN THE EVENT OF A DISCREPANCY BETWEEN THESE CONSTRUCTION PLANS AND THE AFOREMENTIONED STANDARDS AND SPECIFICATIONS, THE DESIGN AND CONSTRUCTION STANDARDS AND SPECIFICATIONS SHALL TAKE PRECEDENCE UNLESS THE DEVIATION HAS BEEN APPROVED IN WRITING BY THE JWSC.
- THE MINIMUM HORIZONTAL AND VERTICAL SEPARATION BETWEEN WATER LINES, SEWER LINES, AND STORM DRAINS SHALL CONFORM TO THE LATEST GEORGIA EPD REQUIREMENTS.
- A MINIMUM DISTANCE OF 20' OR TWO TIMES THE DEPTH OF THE MAIN, WHICHEVER IS GREATER, SHALL BE MAINTAINED FROM ALL BUILDINGS, FOUNDATIONS AND THE TOP OF BANK OF ALL PONDS, ANY DEVIATION FROM THIS REQUIREMENT MUST BE APPROVED IN WRITING BY THE JWSC.
- PRESSURE AND LEAKAGE TESTING SHALL BE PERFORMED IN ACCORDANCE WITH THE DESIGN AND CONSTRUCTION STANDARDS AND SPECIFICATIONS OF THE JWSC.
- AT LEAST 72 HOURS PRIOR TO COMMENCEMENT OF THE WORK, THE CONTRACTOR SHALL NOTIFY THE UTILITIES PROTECTION CENTER (UPC) AT 1-800-282-7411 TO REQUEST UNDERGROUND UTILITY LOCATE SERVICE.
- IN ACCORDANCE WITH JWSC STANDARDS 2.5.3.3 PIPE SHALL BE LAID WITH A MINIMUM COVER OF FORTY TWO (42) INCHES IN PAVED AREAS AND THIRTY SIX (36) INCHES IN UNPAVED AREAS WITH AN ALLOWABLE MAXIMUM OF SIXTY (60) INCHES. COVER IN ALL AREAS SHALL BE MEASURED FROM CROWN OF PIPE TO FINISH SURFACE. REDUCTIONS IN PIPE COVER REQUIREMENTS REQUIRE APPROVAL OF THE JWSC. GREATER DEPTHS ARE PERMISSIBLE WHEN REQUIRED TO CLEAR OBSTRUCTIONS, CONFLICTS, ETC. THE CONTRACTOR SHALL CONTACT THE JWSC IN ADVANCE FOR INSTRUCTIONS AS TO THE MODIFICATIONS NECESSARY. A DETAIL FOR UTILITY CONFLICTS IS PROVIDED IN THE CONSTRUCTION DETAILS.
- IN ACCORDANCE WITH JWSC STANDARD 2.5.3.4 WATER LINES SHALL NOT BE LAID CLOSER THAN TEN (10) FEET HORIZONTALLY FROM SANITARY SEWER MAIN OR SEPTIC TANK LINE. EXCEPTIONS REQUIRE THE APPROVAL OF THE JWSC PLANNING AND CONSTRUCTION DIVISION. SANITARY SEWER LINES SHALL PASS BENEATH WATER LINES WITH THE TOP OF THE SEWER BEING AT LEAST EIGHTEEN (18) INCHES BELOW THE BOTTOM OF THE WATER LINE, WHERE SEWER LINES CROSS WATER LINES. NO JOINTS IN THE SEWER LINE SHALL BE LOCATED CLOSER THAN TEN (10) FEET HORIZONTAL DISTANCE FROM THE WATER LINE.
- RECORD DRAWINGS MUST BE PROVIDED TO JWSC FOR ALL WATER AND SEWER INFRASTRUCTURE IN ACCORDANCE WITH JWSC RECORD DRAWINGS STANDARDS.
- THE CONTRACTOR SHALL IMMEDIATELY REPAIR EXISTING WATER & SEWER SERVICES DAMAGED DURING CONSTRUCTION T THE CONTRACTORS EXPENSE.
- THE BGJWSC RESERVES FIRST RIGHT OF SALVAGE FOR ALL EQUIPMENT REMOVAL.

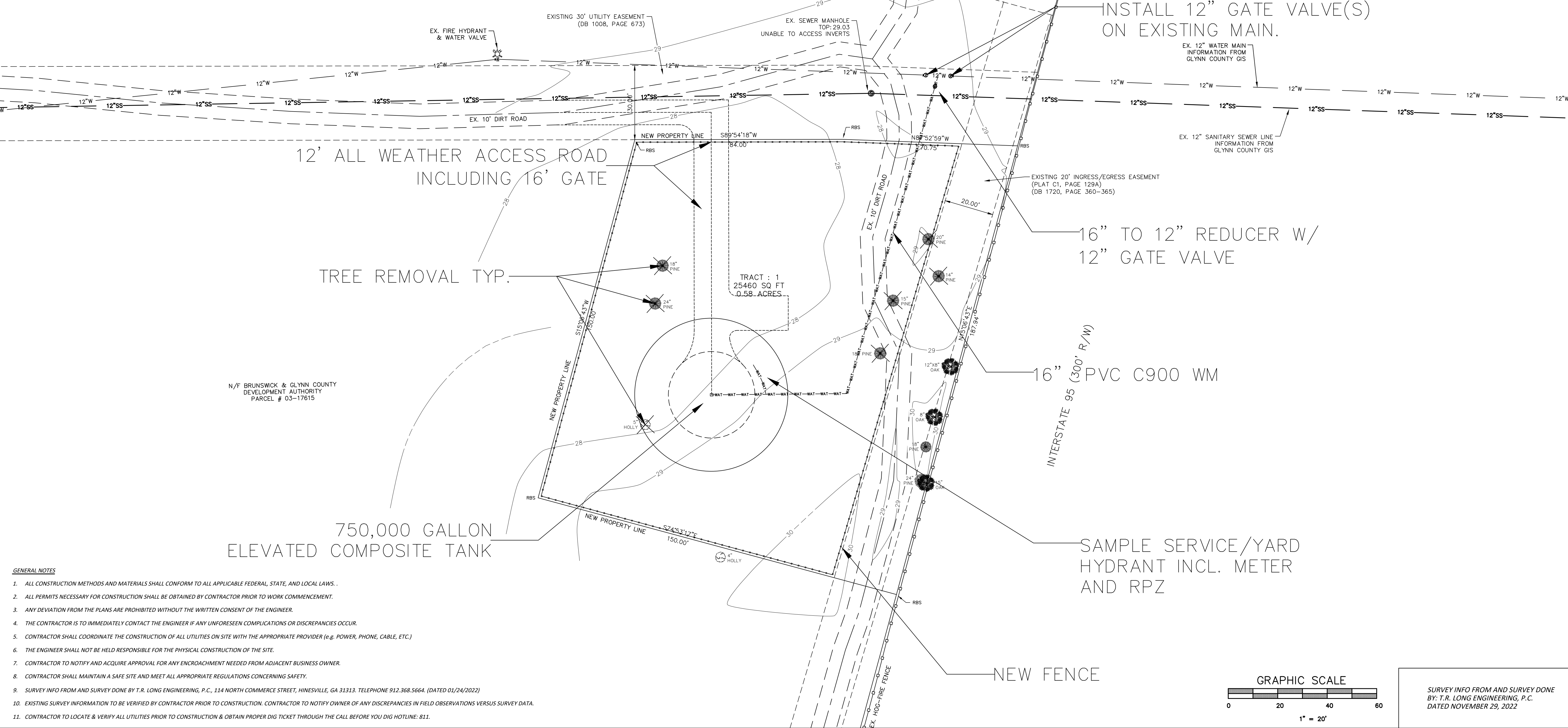
SITE REQUIREMENTS

FENCING SHALL BE 6-FEET HIGH CONSISTING OF 2-INCH MESH BY 9 GAUGE ALUMINUM COATED STEEL FABRIC WITH BLACK PVC COATING. THE FENCE SHALL HAVE A 7 GAUGE ALUMINUM COATED STEEL COIL SPRING TENSION WIRE ALONG THE BOTTOM OF THE FENCE FABRIC AND 3 STRANDS OF 12-1/2 GAUGE ALUMINUM COATED STEEL BARBED WIRE LAONG THE TOP OF THE FENCE FABRIC. FENCE POSTS SHALL BE AS FOLLOWS:

- CORNER POSTS - 3 INCH OD GALVANIZED
- LINE POSTS - 2-1/2 INCH OD GALVANIZED

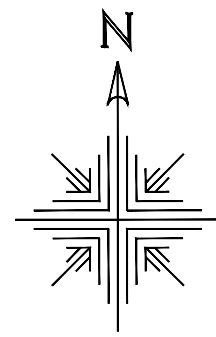
CORNER AND GATE POSTS SHALL HAVE NECESSARY STRUTS AND TIE BRACING WITH WATER TIGHT CLOSURE CAPS. GATE SHALL CONSIST OF A DOUBLE 8'-0" LONG 6'-0" HIGH SECTION AND SHALL BE EQUIPPED WITH A LATCH AND HASP ASSEMBLY. A GROUND ANCHOR CAST IN CONCRETE SHALL BE INSTALLED.

YARD LIGHT TO BE POLE MOUNTED 120V 500W QUARTZ AREA LIGHT WITH A MINIMUM MOUNTING HEIGHT OF 12 FEET ABOVE FINISHED GRADE. FIXTURE SHALL BE LITHONIA CAT# F500QL-120-M12 OR APPROVED EQUAL



GENERAL NOTES

- ALL CONSTRUCTION METHODS AND MATERIALS SHALL CONFORM TO ALL APPLICABLE FEDERAL, STATE, AND LOCAL LAWS. .
- ALL PERMITS NECESSARY FOR CONSTRUCTION SHALL BE OBTAINED BY CONTRACTOR PRIOR TO WORK COMMENCEMENT.
- ANY DEVIATION FROM THE PLANS ARE PROHIBITED WITHOUT THE WRITTEN CONSENT OF THE ENGINEER.
- THE CONTRACTOR IS TO IMMEDIATELY CONTACT THE ENGINEER IF ANY UNFORESEEN COMPLICATIONS OR DISCREPANCIES OCCUR.
- CONTRACTOR SHALL COORDINATE THE CONSTRUCTION OF ALL UTILITIES ON SITE WITH THE APPROPRIATE PROVIDER (e.g. POWER, PHONE, CABLE, ETC.)
- THE ENGINEER SHALL NOT BE HELD RESPONSIBLE FOR THE PHYSICAL CONSTRUCTION OF THE SITE.
- CONTRACTOR TO NOTIFY AND ACQUIRE APPROVAL FOR ANY ENCROACHMENT NEEDED FROM ADJACENT BUSINESS OWNER.
- CONTRACTOR SHALL MAINTAIN A SAFE SITE AND MEET ALL APPROPRIATE REGULATIONS CONCERNING SAFETY.
- SURVEY INFO FROM AND SURVEY DONE BY T.R. LONG ENGINEERING, P.C., 114 NORTH COMMERCE STREET, HINESVILLE, GA 31313. TELEPHONE 912.368.5664. (DATED 01/24/2022)
- EXISTING SURVEY INFORMATION TO BE VERIFIED BY CONTRACTOR PRIOR TO CONSTRUCTION. CONTRACTOR TO NOTIFY OWNER OF ANY DISCREPANCIES IN FIELD OBSERVATIONS VERSUS SURVEY DATA.
- CONTRACTOR TO LOCATE & VERIFY ALL UTILITIES PRIOR TO CONSTRUCTION & OBTAIN PROPER DIG TICKET THROUGH THE CALL BEFORE YOU DIG HOTLINE: 811.



BRUNSWICK-GLYNN JOINT WATER & SEWER COMMISSION
PLANNING & CONSTRUCTION DIVISION
1703 Gloucester Street
Brunswick, Georgia 31520
(912) 261-7110 Phone
(912) 261-7178 Fax
www.bgjwsc.org

NO.	DATE	COMMENTS

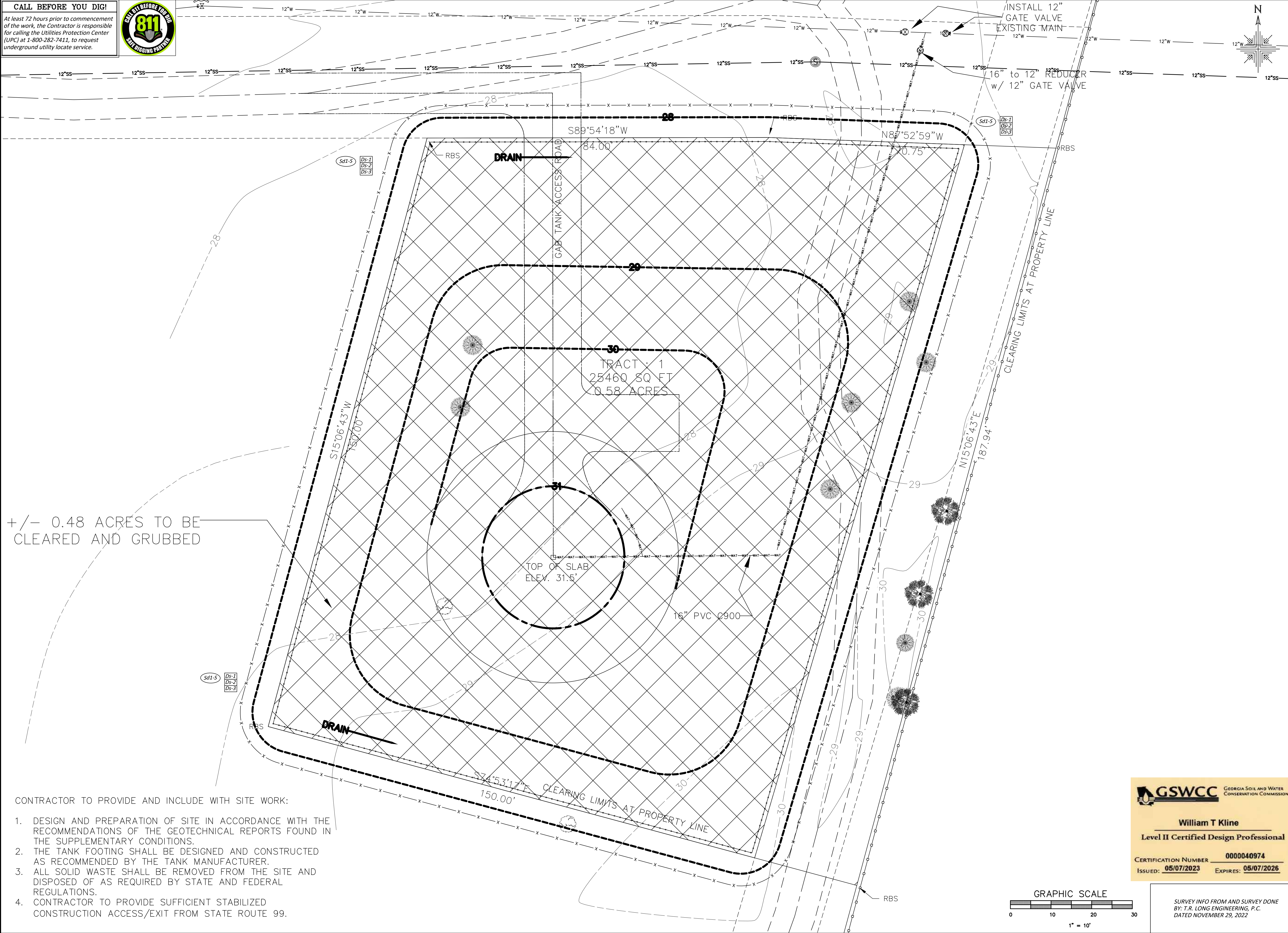
EXIT 42 750,000 GALLON ELEVATED STORAGE TANK
GLYNN COUNTY, GEORGIA
BRUNSWICK-GLYNN COUNTY JOINT WATER & SEWER COMMISSION

FILE NO.: PROJ. #2213	DATE: -	SCALE: AS SHOWN	DRAWN BY: HP
SHEET NO.: P-1			
OF 6			

SURVEY INFO FROM AND SURVEY DONE BY: T.R. LONG ENGINEERING, P.C.
DATED NOVEMBER 29, 2022

CALL BEFORE YOU DIG!

At least 72 hours prior to commencement of the work, the Contractor is responsible for calling the Utilities Protection Center (UPC) at 1-800-282-7411, to request underground utility locate service.



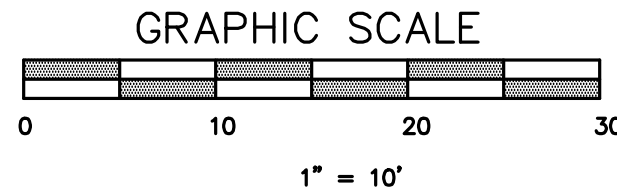
CONTRACTOR TO PROVIDE AND INCLUDE WITH SITE WORK:

1. DESIGN AND PREPARATION OF SITE IN ACCORDANCE WITH THE RECOMMENDATIONS OF THE GEOTECHNICAL REPORTS FOUND IN THE SUPPLEMENTARY CONDITIONS.
2. THE TANK FOOTING SHALL BE DESIGNED AND CONSTRUCTED AS RECOMMENDED BY THE TANK MANUFACTURER.
3. ALL SOLID WASTE SHALL BE REMOVED FROM THE SITE AND DISPOSED OF AS REQUIRED BY STATE AND FEDERAL REGULATIONS.
4. CONTRACTOR TO PROVIDE SUFFICIENT STABILIZED CONSTRUCTION ACCESS/EXIT FROM STATE ROUTE 99.

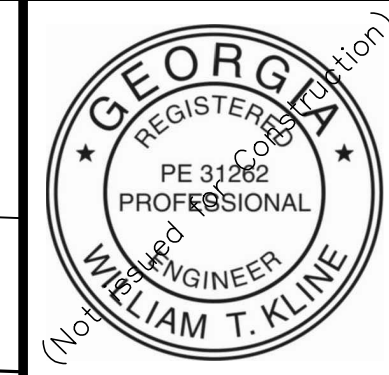
GSWCC GEORGIA SOIL AND WATER CONSERVATION COMMISSION

William T Kline
Level II Certified Design Professional

CERTIFICATION NUMBER 0000040974
ISSUED: 05/07/2023 EXPIRES: 05/07/2026



SURVEY INFO FROM AND SURVEY DONE BY: T.R. LONG ENGINEERING, P.C.
DATED NOVEMBER 29, 2022



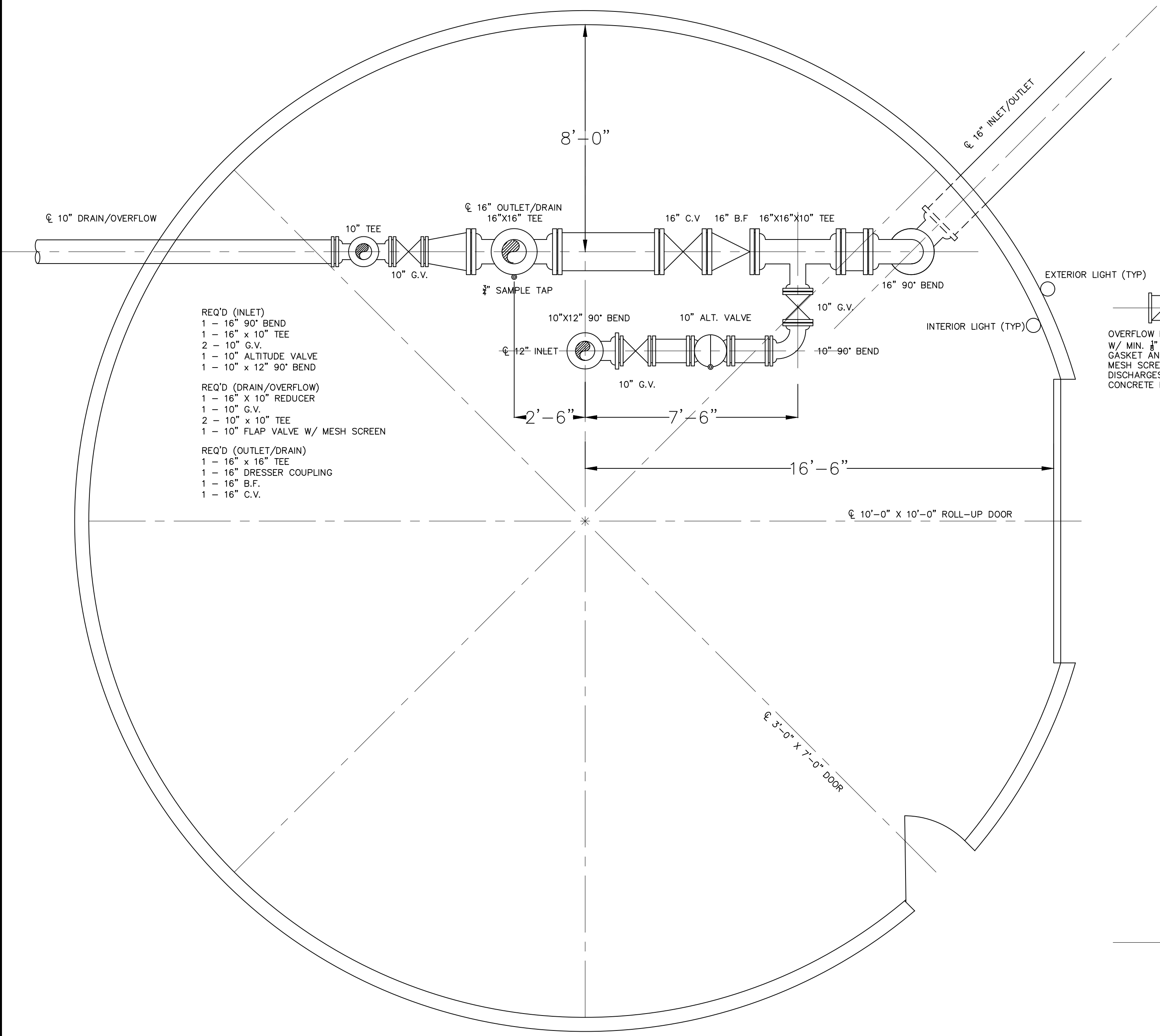
BRUNSWICK-GLYNN JOINT WATER & SEWER COMMISSION
PLANNING & CONSTRUCTION DIVISION
1703 Gloucester Street
Brunswick, Georgia 31520
(912) 261-7110 Phone
(912) 261-7178 Fax
www.bgjwsc.org

NO.	DATE	COMMENTS

EXIT 42 750,000 GALLON ELEVATED STORAGE TANK
GLYNN COUNTY, GEORGIA
BRUNSWICK-GLYNN COUNTY JOINT WATER & SEWER COMMISSION

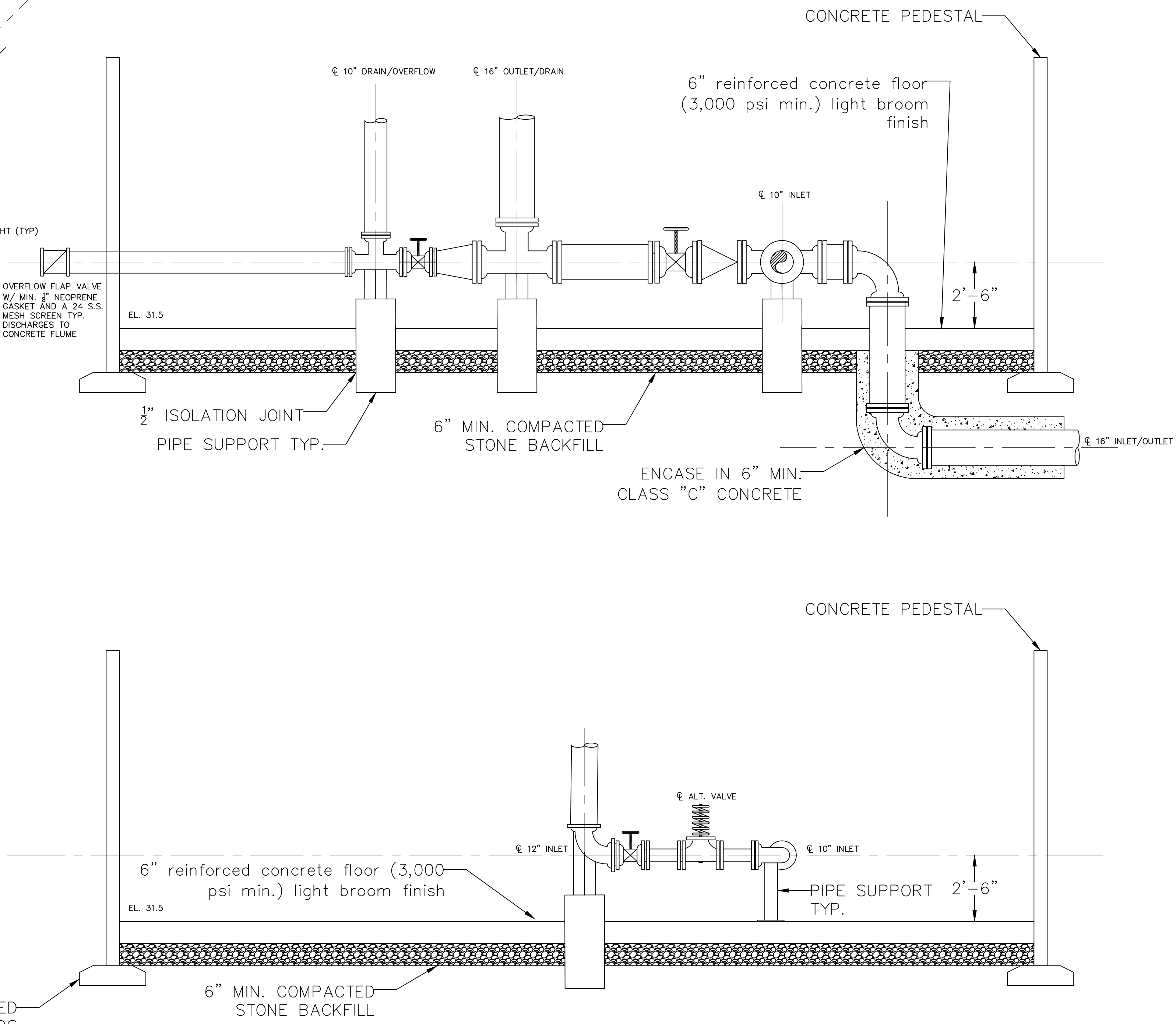
FILE NO.: PROJ. #2213	SHEET NO.: P-2
DATE: -	OF 6
SCALE: AS SHOWN	
DRAWN BY: JHP	

CALL BEFORE YOU DIG!
At least 72 hours prior to commencement of the work, the Contractor is responsible for calling the Utilities Protection Center (UPC) at 1-800-282-7411, to request underground utility locate service.



FOUNDATION DESIGN SHALL BE PROVIDED BY CONTRACTOR BASED ON TANK LOADS AND GEOTECHNICAL REPORT RECOMMENDATIONS FOR SOIL BEARING

SCALE
3/8" = 1'-0"



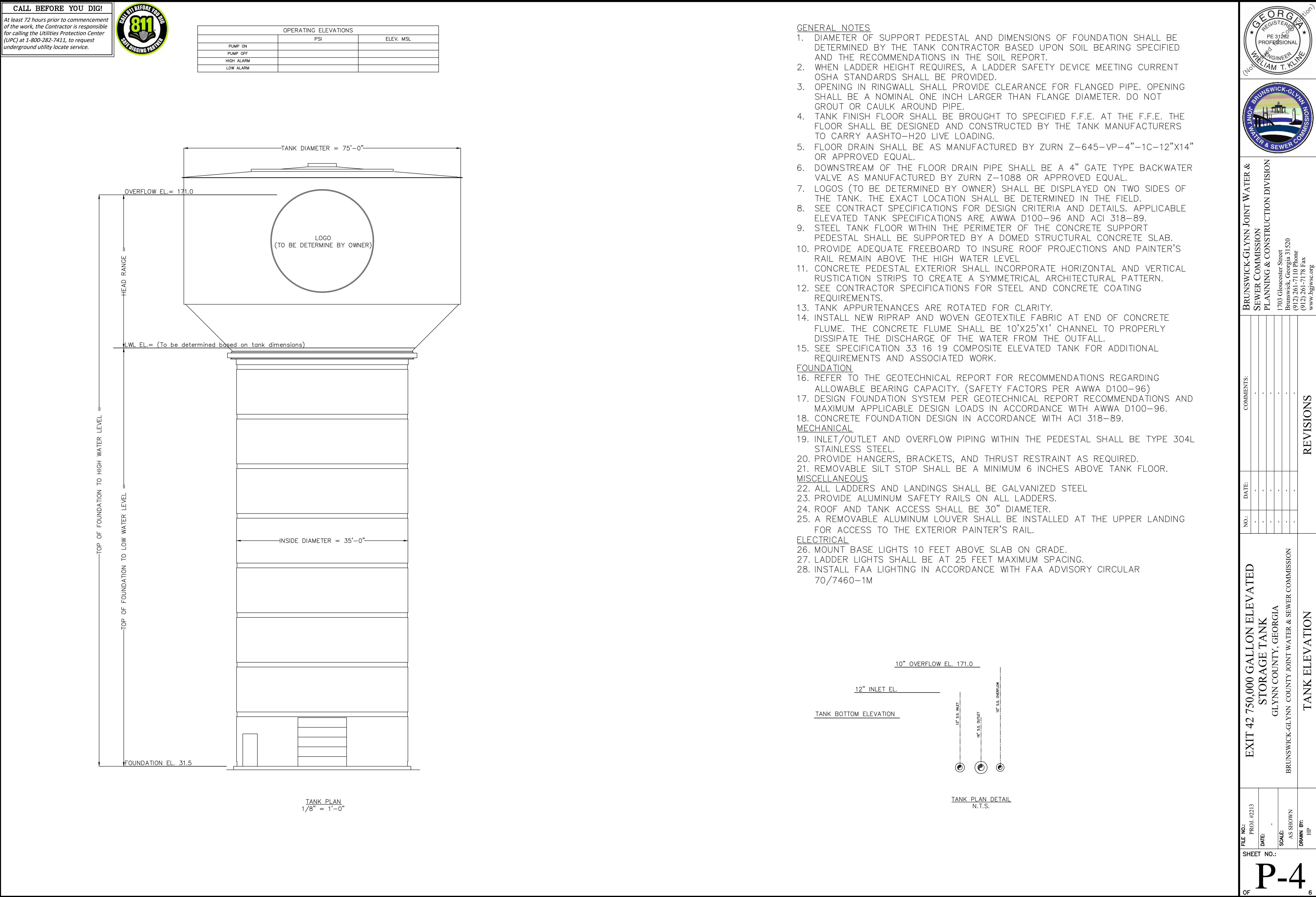
BRUNSWICK-GLYNN JOINT WATER & SEWER COMMISSION
PLANNING & CONSTRUCTION DIVISION
1703 Gloucester Street
Brunswick, Georgia 31520
(912) 261-7110 Phone
(912) 261-7178 Fax
www.bgjwsc.org

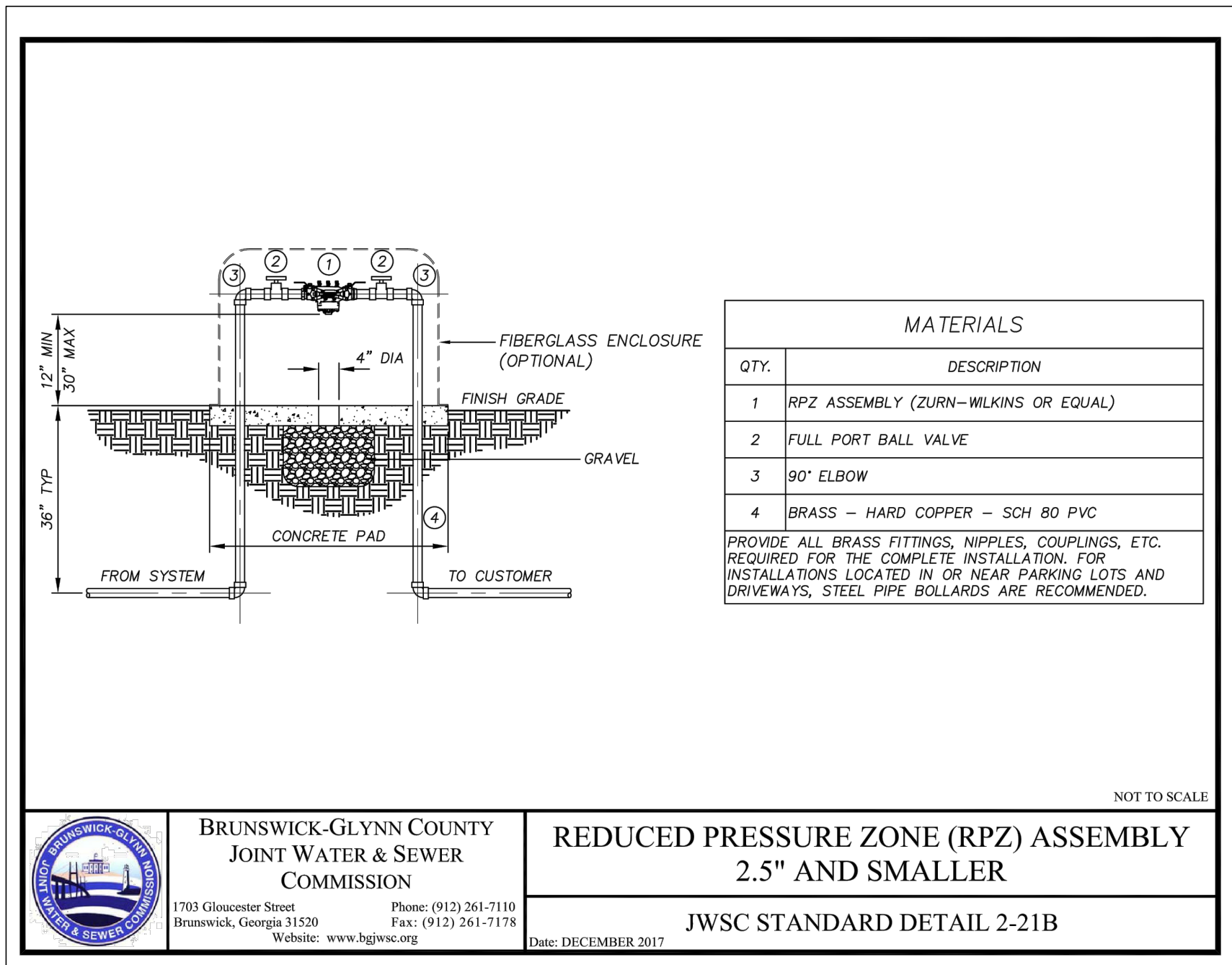
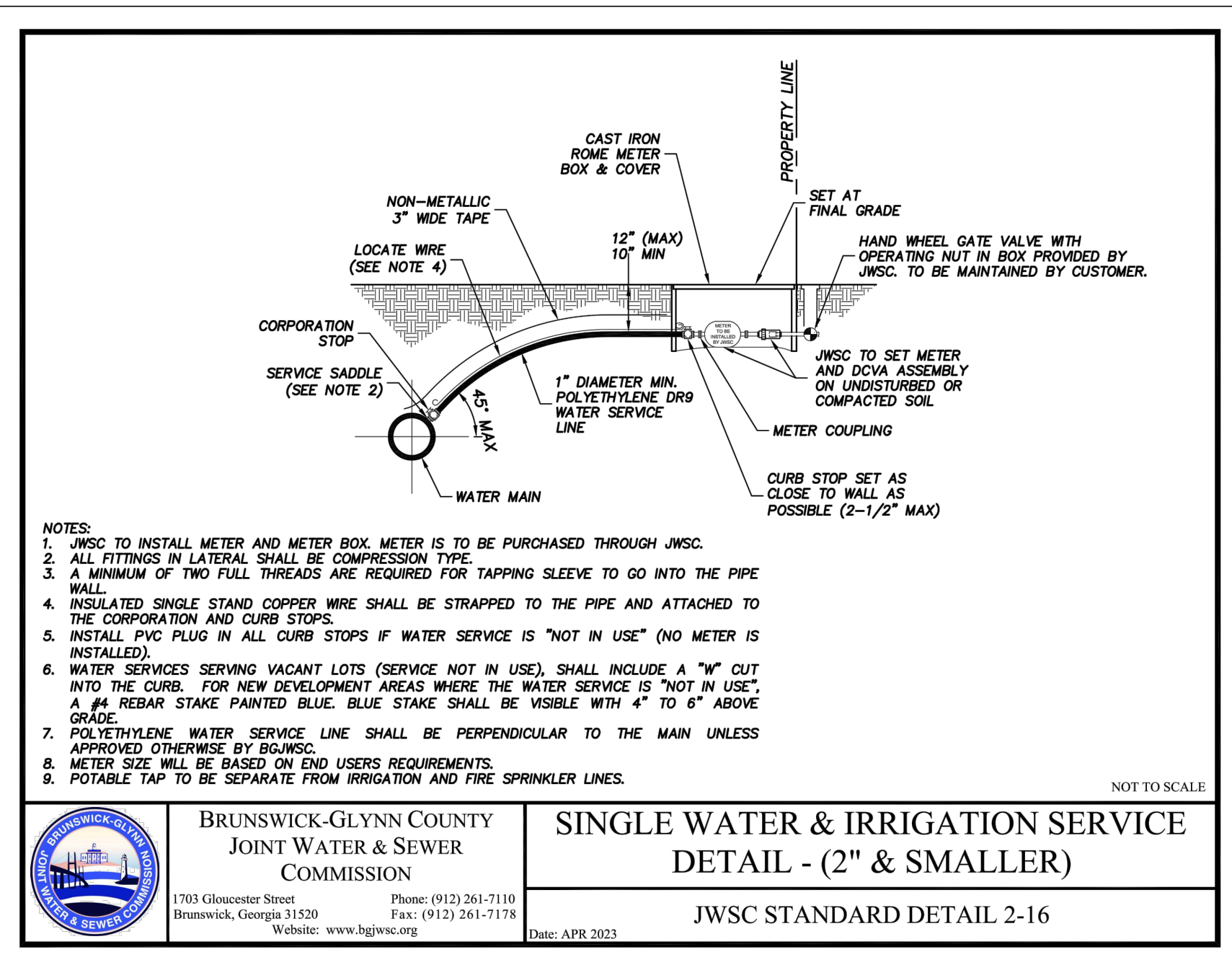
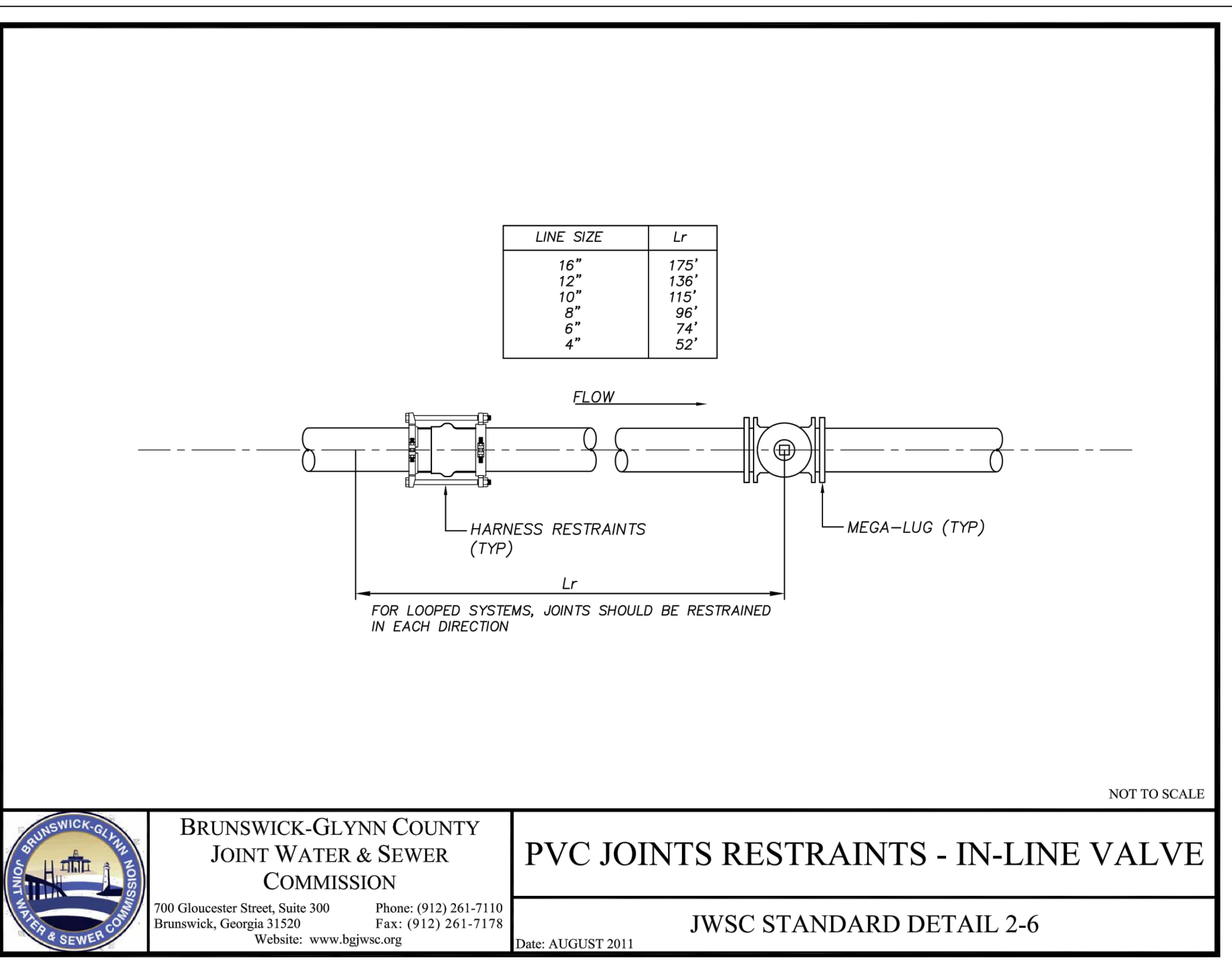
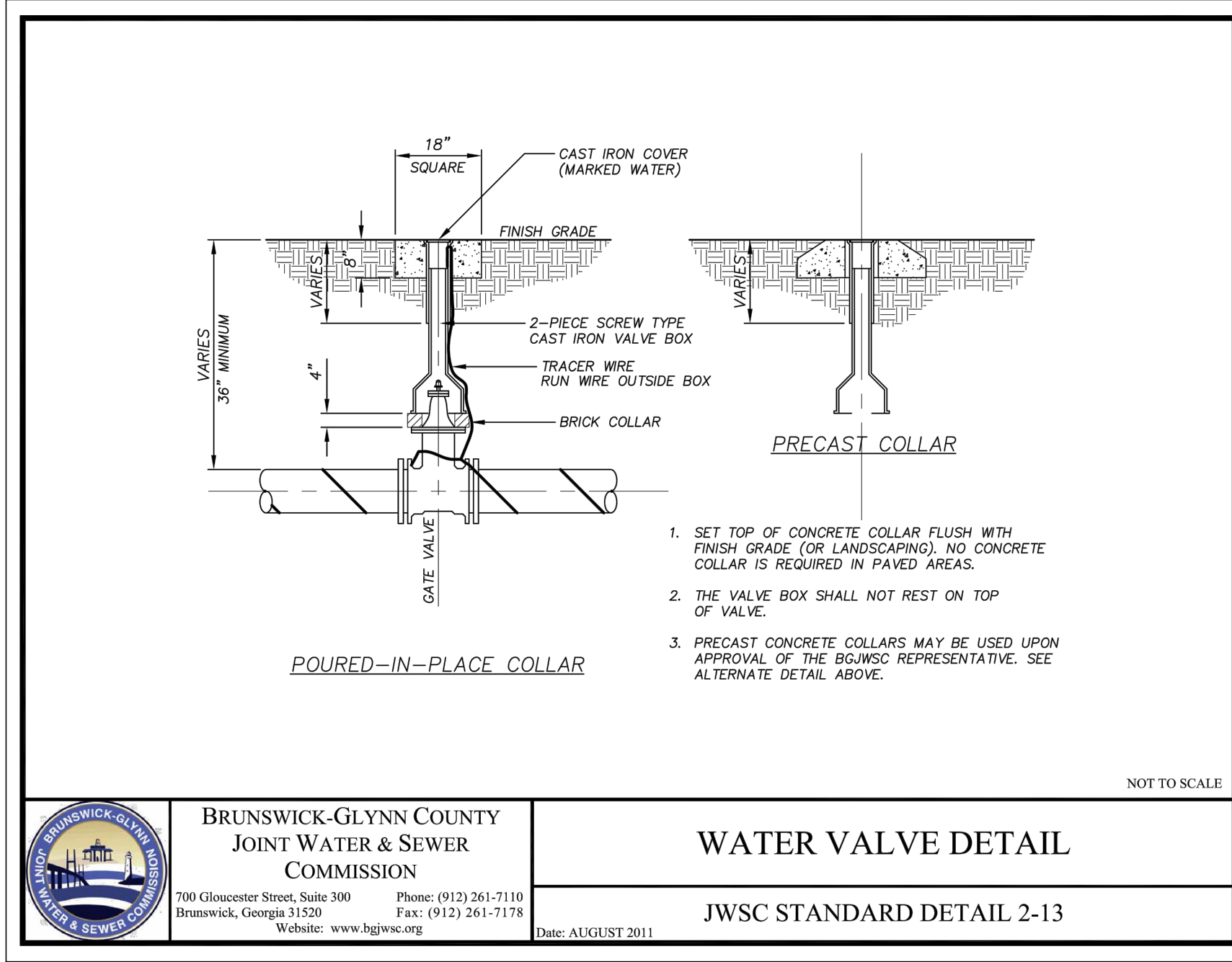
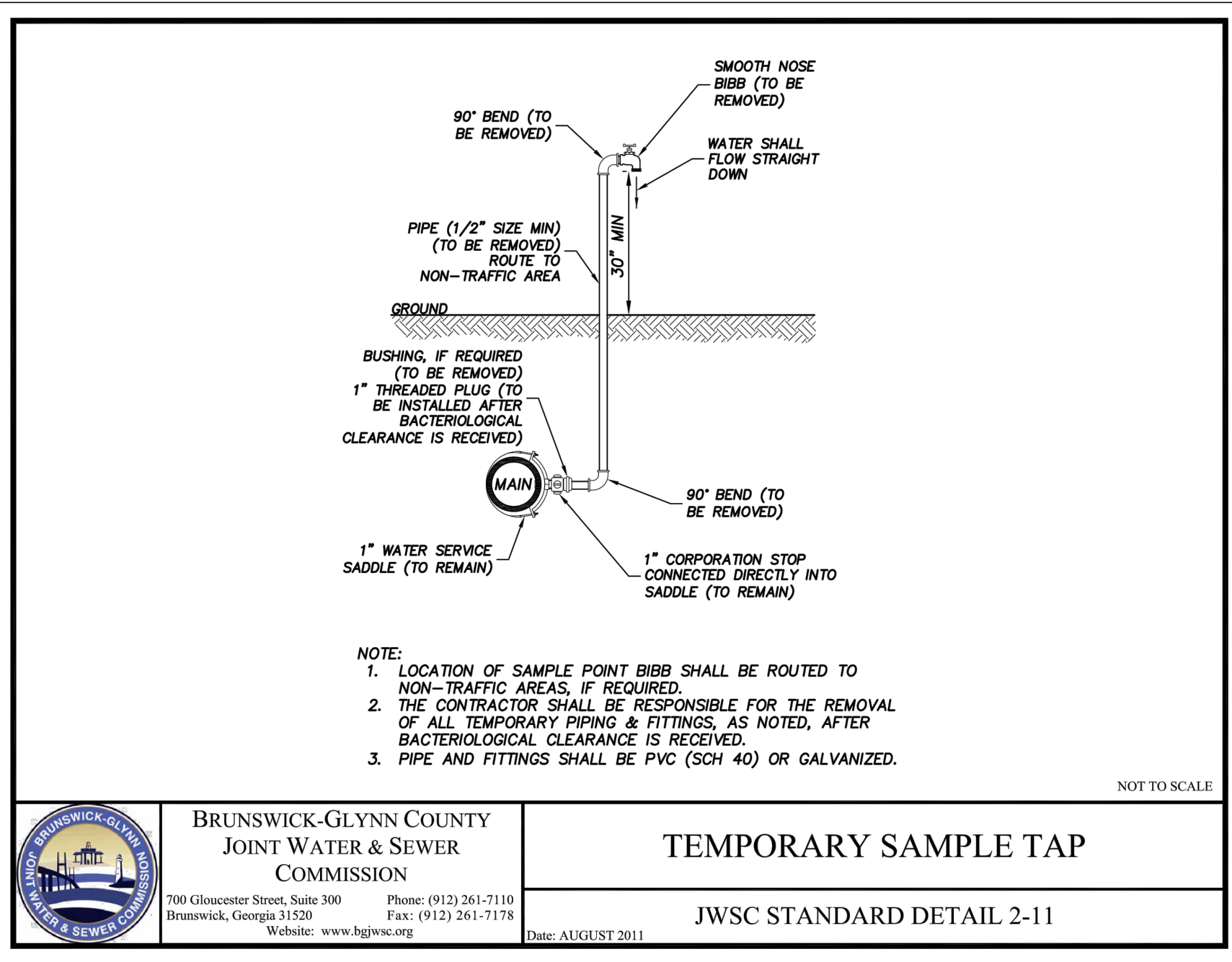
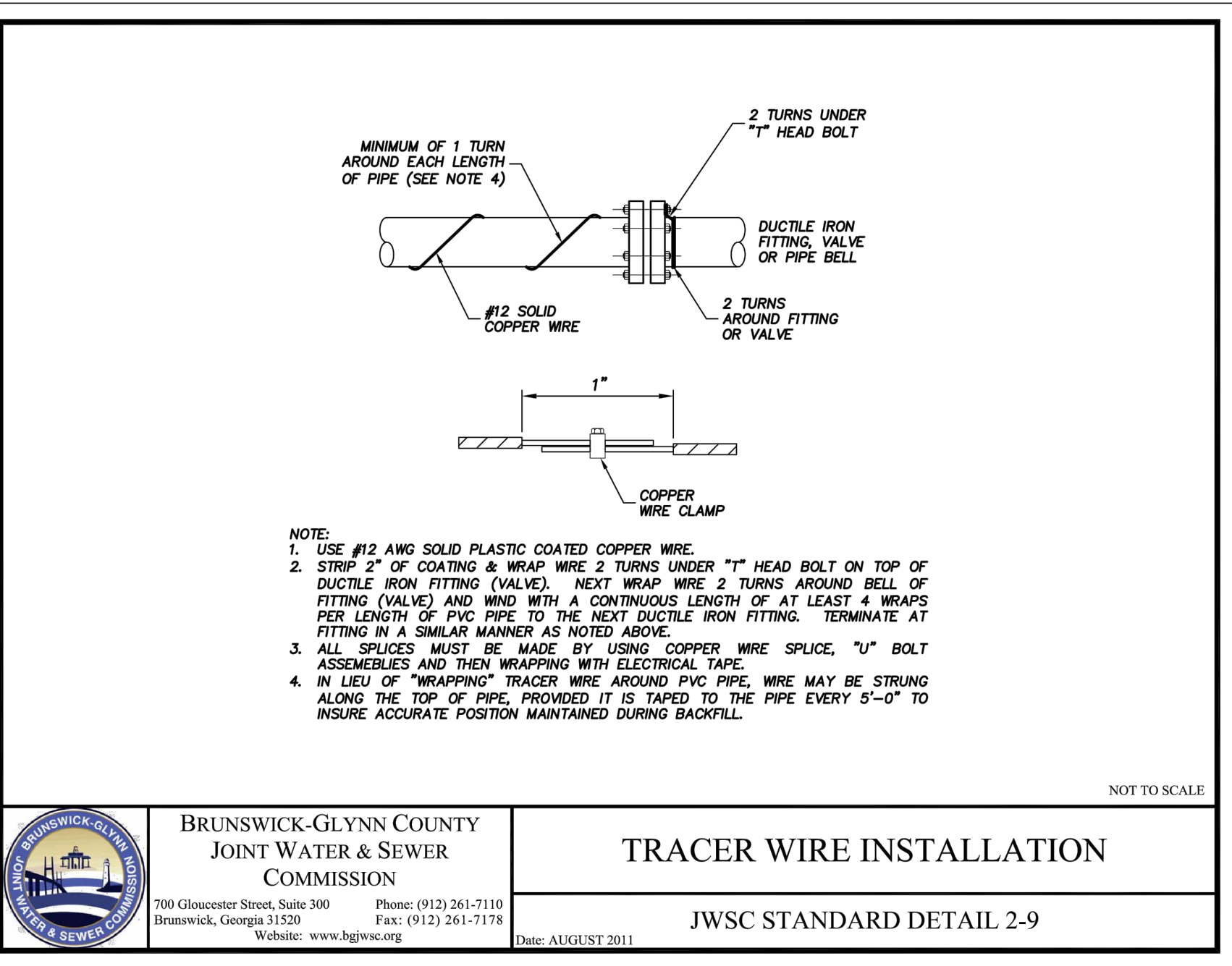
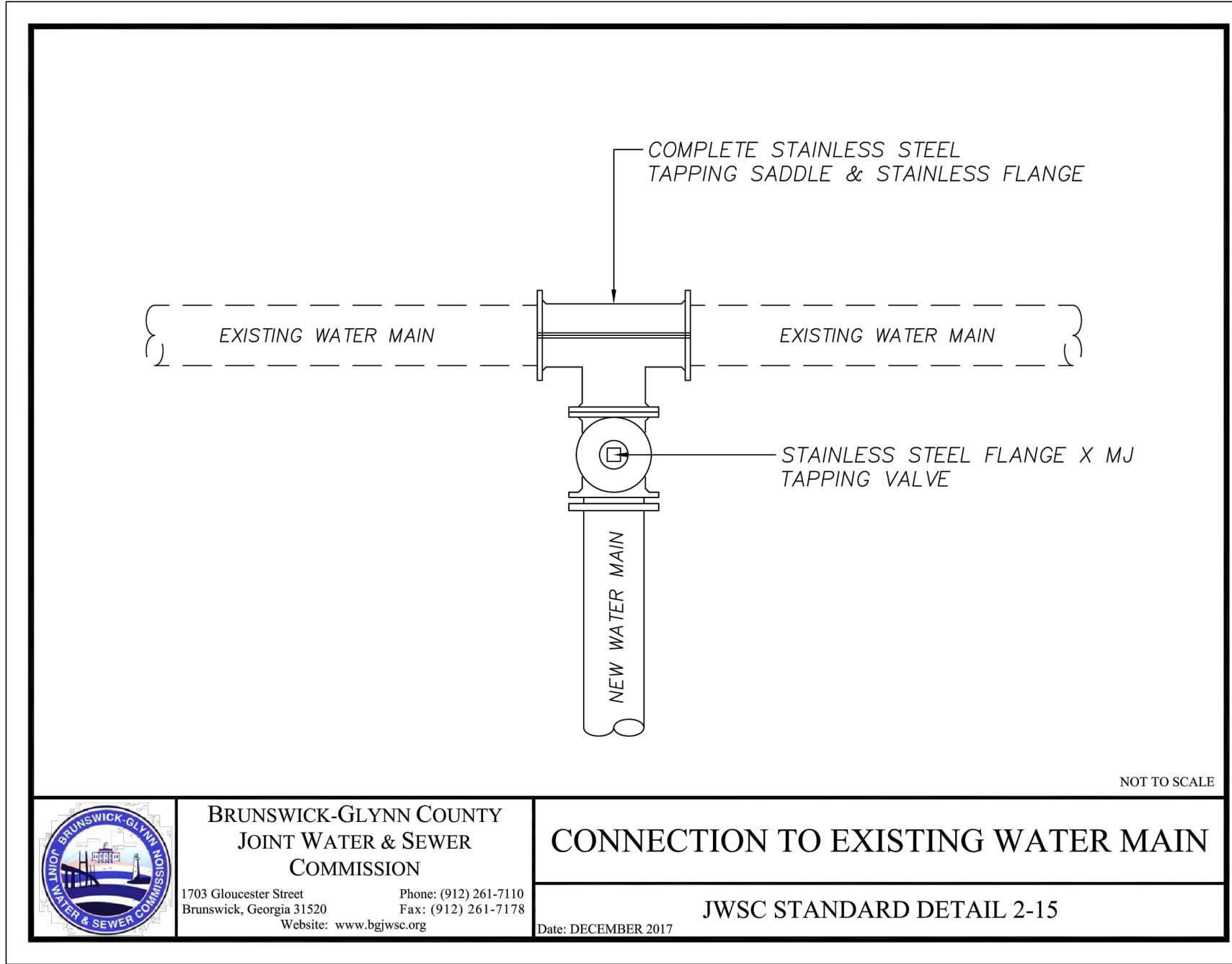
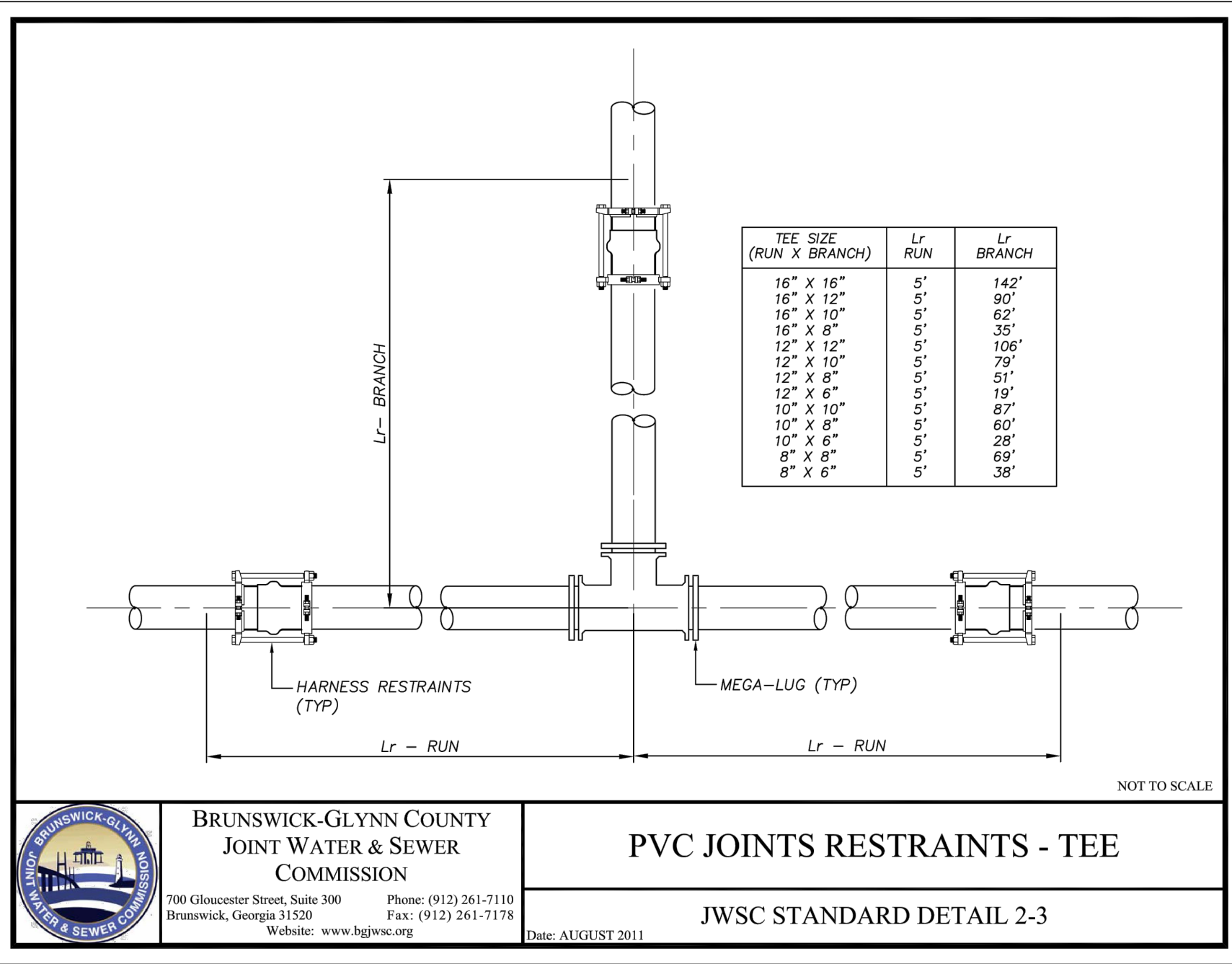
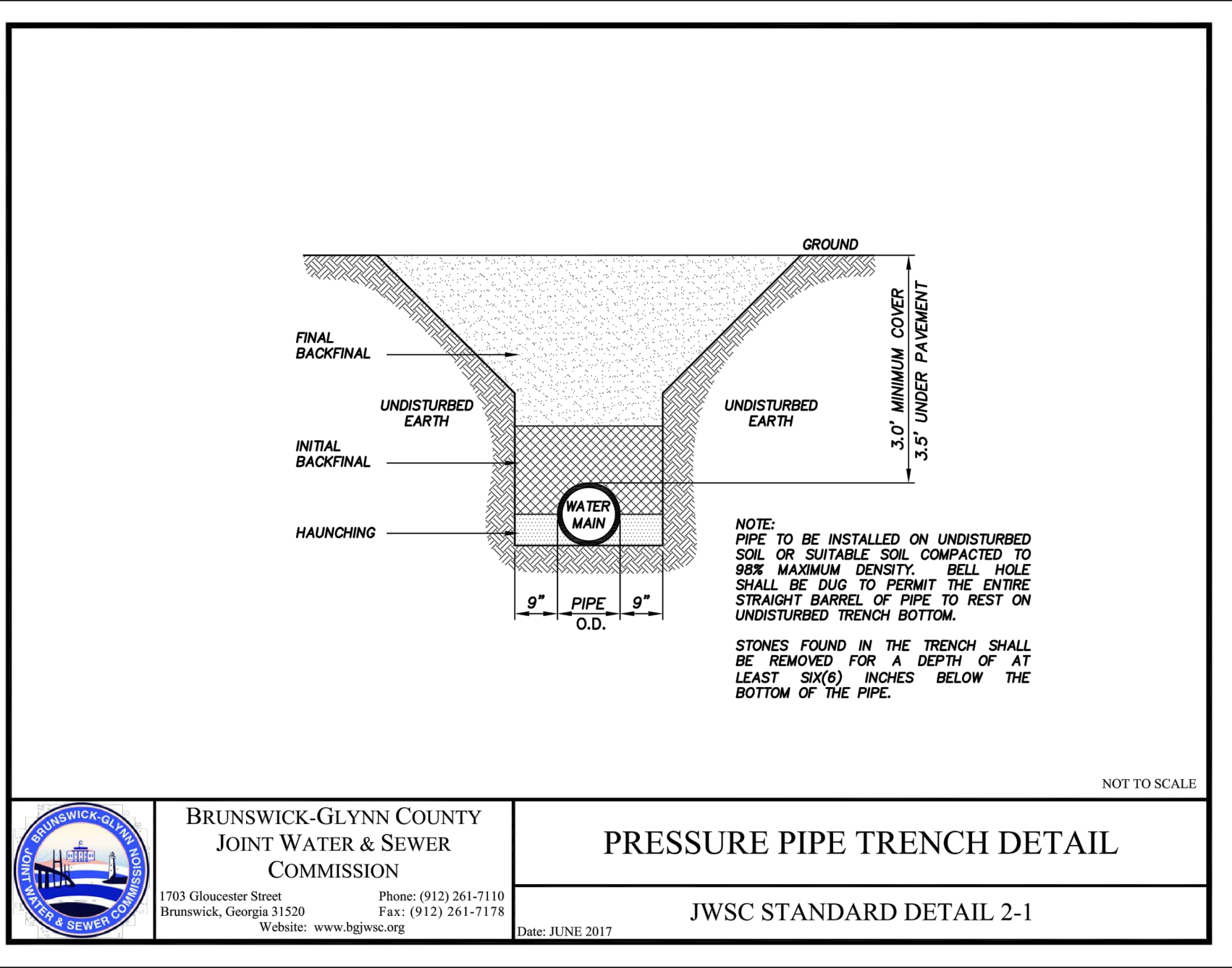
NO.	DATE	COMMENTS

EXIT 42 750,000 GALLON ELEVATED STORAGE TANK
GLYNN COUNTY, GEORGIA
BRUNSWICK-GLYNN COUNTY JOINT WATER & SEWER COMMISSION

FILE NO.: PROJ. #2213	DATE: -	SCALE: 1/8" = 1'-0"	DRAWN BY: HP
--------------------------	------------	------------------------	-----------------

SHEET NO.:
P-3

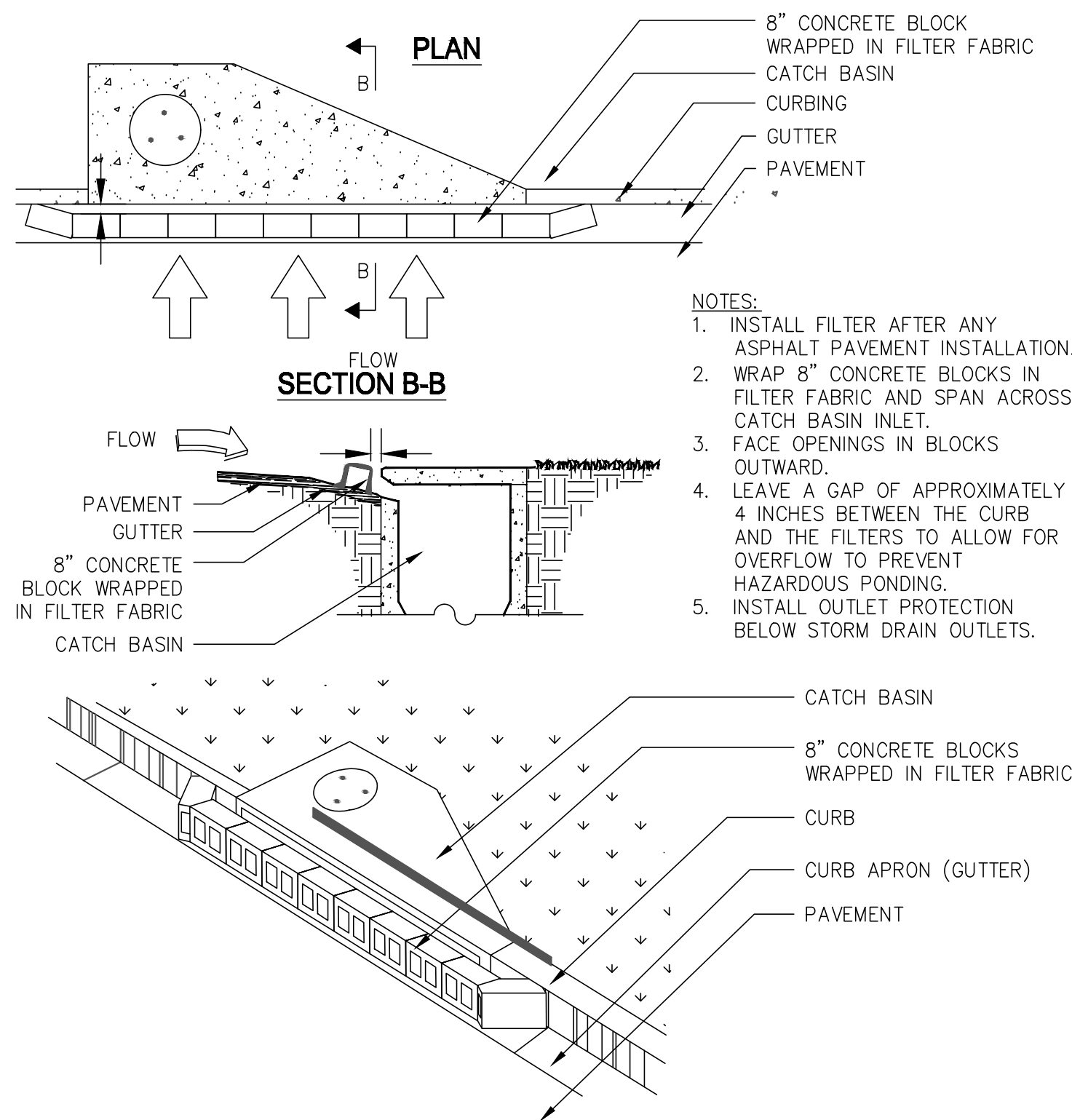




BRUNSWICK-GLYNN JOINT WATER & SEWER COMMISSION
PLANNING & CONSTRUCTION DIVISION
1703 Gloucester Street
Brunswick, Georgia 31520
(912) 261-7110 Phone
(912) 261-7178 Fax
www.bgwsc.org

NO.	DATE	COMMENTS

EXIT 42 750,000 GALLON ELEVATED STORAGE TANK
GLYNN COUNTY, GEORGIA
BRUNSWICK-GLYNN COUNTY JOINT WATER & SEWER COMMISSION



CURB INLET FILTER "PIGS IN BLANKET"

NOT TO SCALE

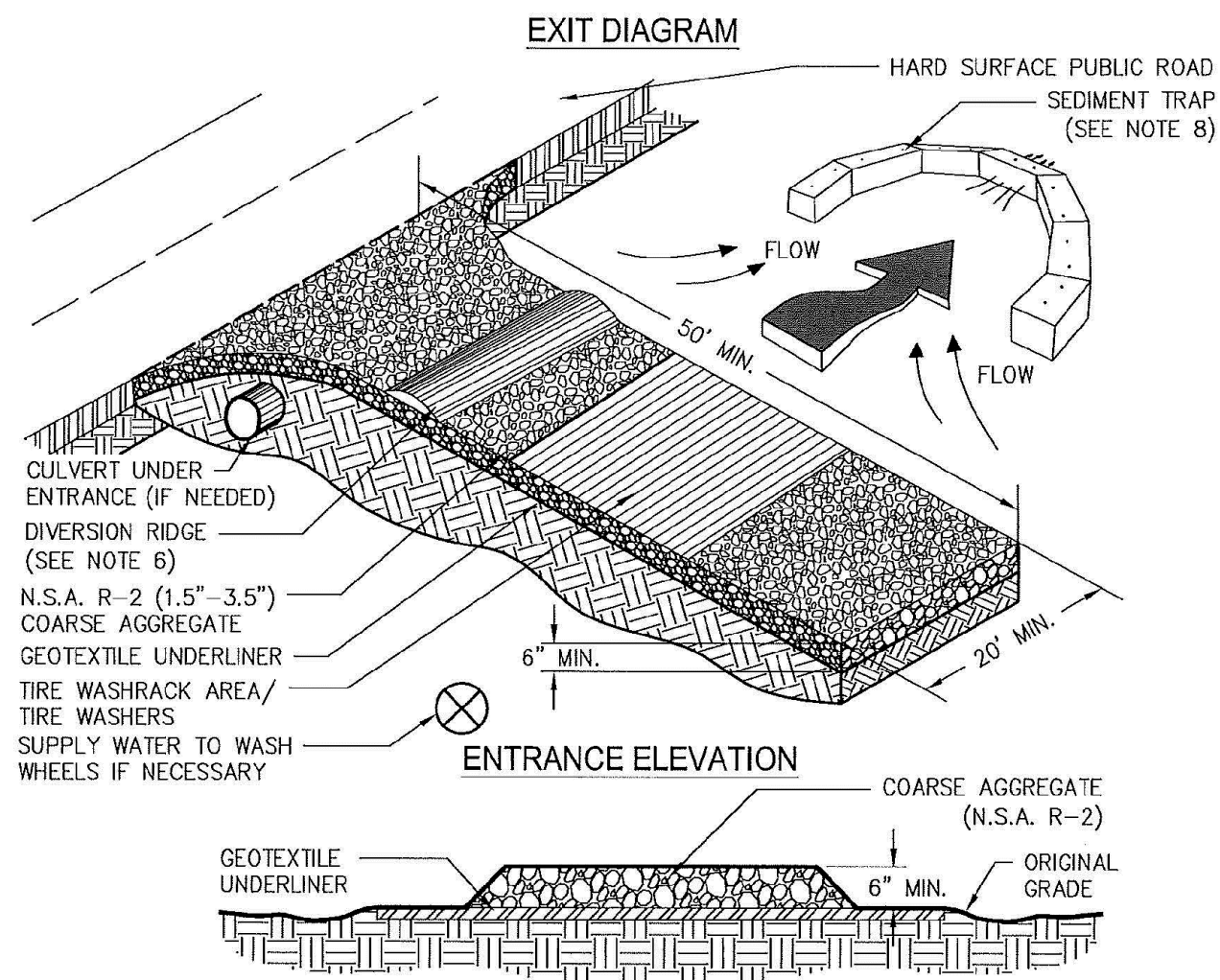
MAINTENANCE

The exit shall be maintained in a condition that will prevent tracking or flow of mud onto public rights-of-way. This may require periodic top dressing with 1.5-3.5 inch stone, as conditions demand, and repair and/or cleanout of any structures to trap sediment. All materials spilled,

dropped, washed, or tracked from vehicles or site onto roadways or into storm drains must be removed immediately.

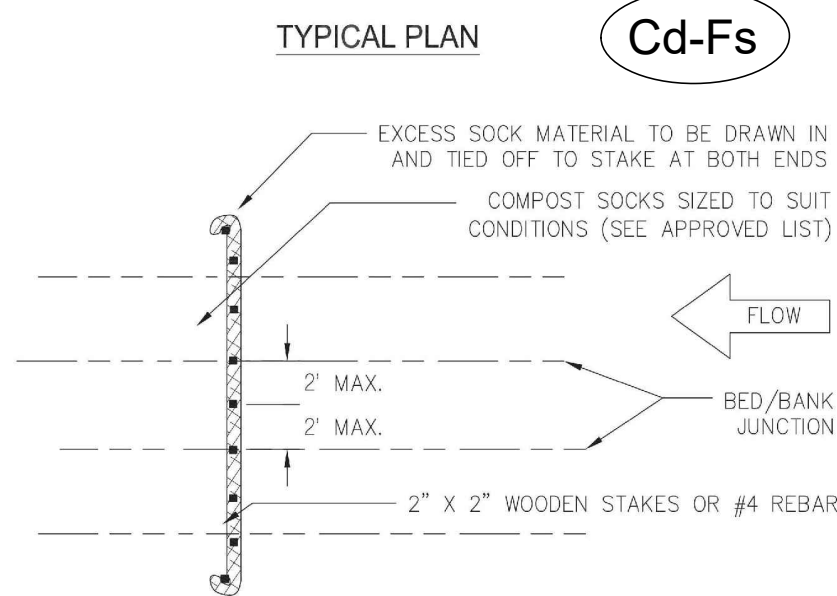
Co

CRUSHED STONE CONSTRUCTION EXIT



- NOTES:
1. AVOID LOCATING ON STEEP SLOPES OR AT CURVES ON PUBLIC ROADS.
 2. REMOVE ALL VEGETATION AND OTHER UNSUITABLE MATERIAL FROM THE FOUNDATION AREA, GRADE, AND CROWN FOR POSITIVE DRAINAGE.
 3. AGGREGATE SIZE SHALL BE IN ACCORDANCE WITH NATIONAL STONE ASSOCIATION R-2 (1.5"-3.5" STONE).
 4. GRAVEL PAD SHALL HAVE A MINIMUM THICKNESS OF 6".
 5. PAD WIDTH SHALL BE EQUAL FULL WIDTH AT ALL POINTS OF VEHICULAR EGRESS, BUT NO LESS THAN 20'.
 6. A DIVERSION RIDGE SHOULD BE CONSTRUCTED WHEN GRADE TOWARD PAVED AREA IS GREATER THAN 2%.
 7. INSTALL PIPE UNDER THE ENTRANCE IF NEEDED TO MAINTAIN DRAINAGE DITCHES.
 8. WHEN WASHING IS REQUIRED, IT SHOULD BE DONE ON AN AREA STABILIZED WITH CRUSHED STONE THAT DRAINS INTO AN APPROVED SEDIMENT TRAP OR SEDIMENT BASIN (DIVERT ALL SURFACE RUNOFF AND DRAINAGE FROM THE ENTRANCE TO A SEDIMENT CONTROL DEVICE).
 9. WASHRACKS AND/OR TIRE WASHERS MAY BE REQUIRED DEPENDING ON SCALE AND CIRCUMSTANCE. IF NECESSARY, WASHRACK DESIGN MAY CONSIST OF ANY MATERIAL SUITABLE FOR TRUCK TRAFFIC THAT REMOVE MUD AND DIRT.
 10. MAINTAIN AREA IN A WAY THAT PREVENTS TRACKING AND/OR FLOW OF MUD ONTO PUBLIC RIGHTS-OF-WAYS. THIS MAY REQUIRE TOP DRESSING, REPAIR AND/OR CLEANOUT OF ANY MEASURES USED TO TRAP SEDIMENT.

COMPOST SOCKS FOR CHECK DAMS



- NOTES:
1. ALL MATERIAL TO MEET SPECIFICATIONS.
 2. PLACE ONE STAKE AT THE CENTER OF THE DITCH/CHANNEL. ALSO PLACE STAKES AT THE BED/BANK JUNCTION AND AT END OF THE DEVICE NOT SPACED MORE THAN 2 FEET APART.
 3. SEDIMENT SHOULD BE REMOVED FROM BEHIND THE CHECK DAM ONCE THE ACCUMULATED HEIGHT HAS REACHED 1/2 THE HEIGHT OF THE CHECK DAM.
 4. CHECK DAMS CAN BE DIRECT SEEDED AT THE TIME OF INSTALLATION.
 5. MINIMUM STAKING DEPTH FOR SAND, SILT, AND CLAY SHALL BE 18".
 6. COMPOST FILTER SOCK TO BE AT LEAST 18" DIA.

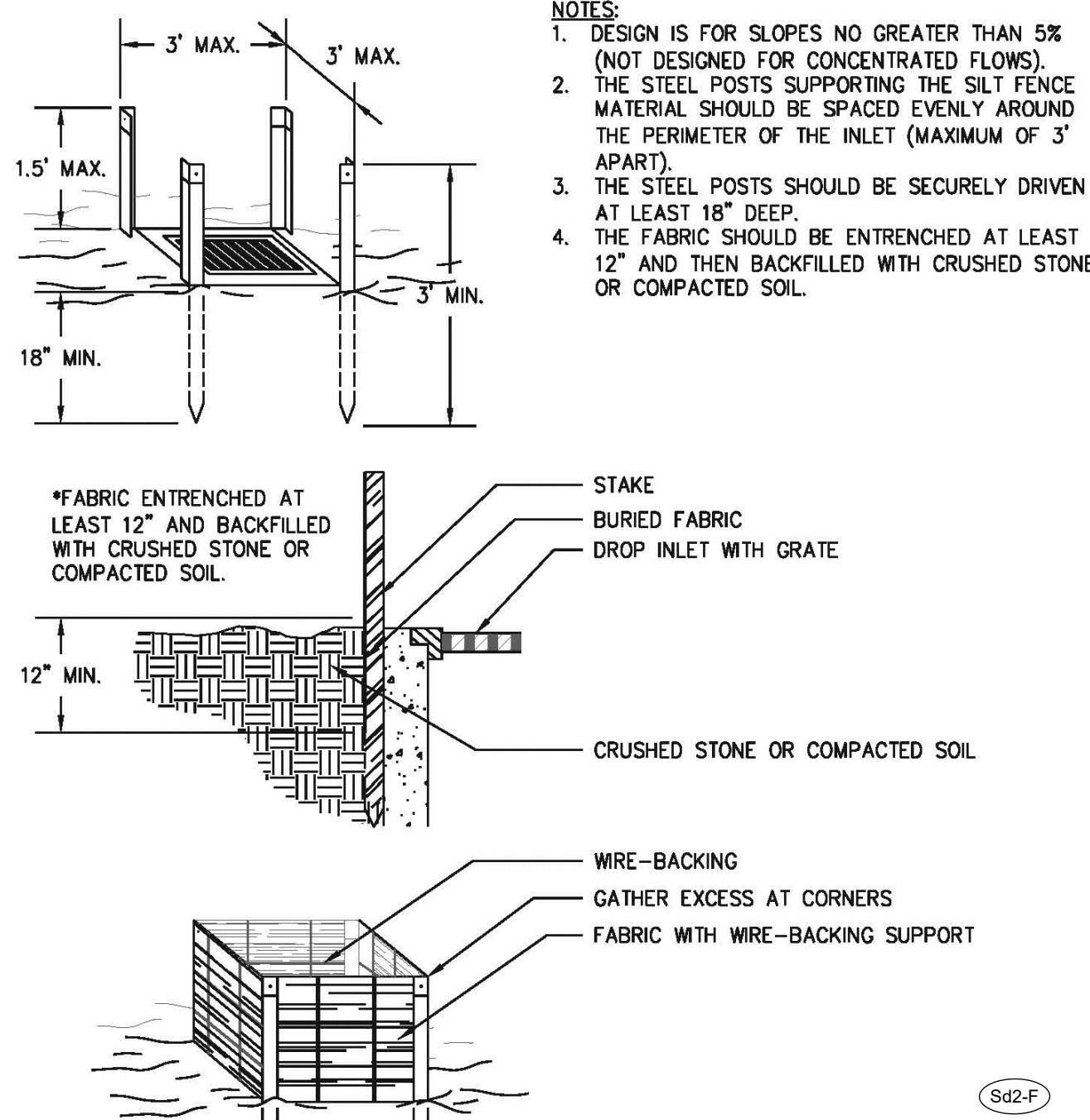
Figure 6-12.4

GBWCC 2016 Edition

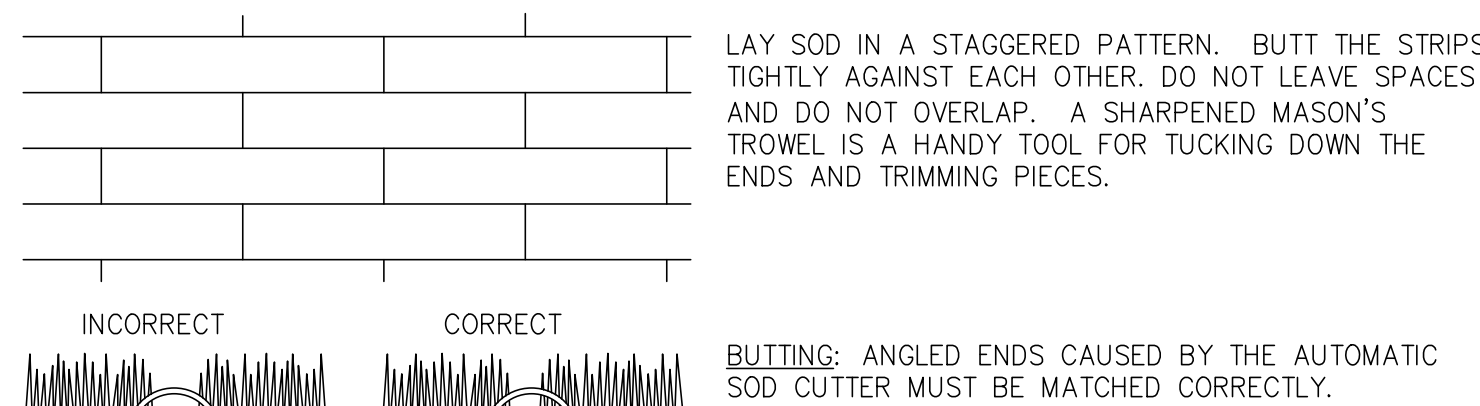
6-84

FABRIC AND SUPPORTING FRAME FOR INLET PROTECTION

STEEL FRAME AND TYPE C SILT FENCE INSTALLATION



SOD LAYOUT AND PREPARATION



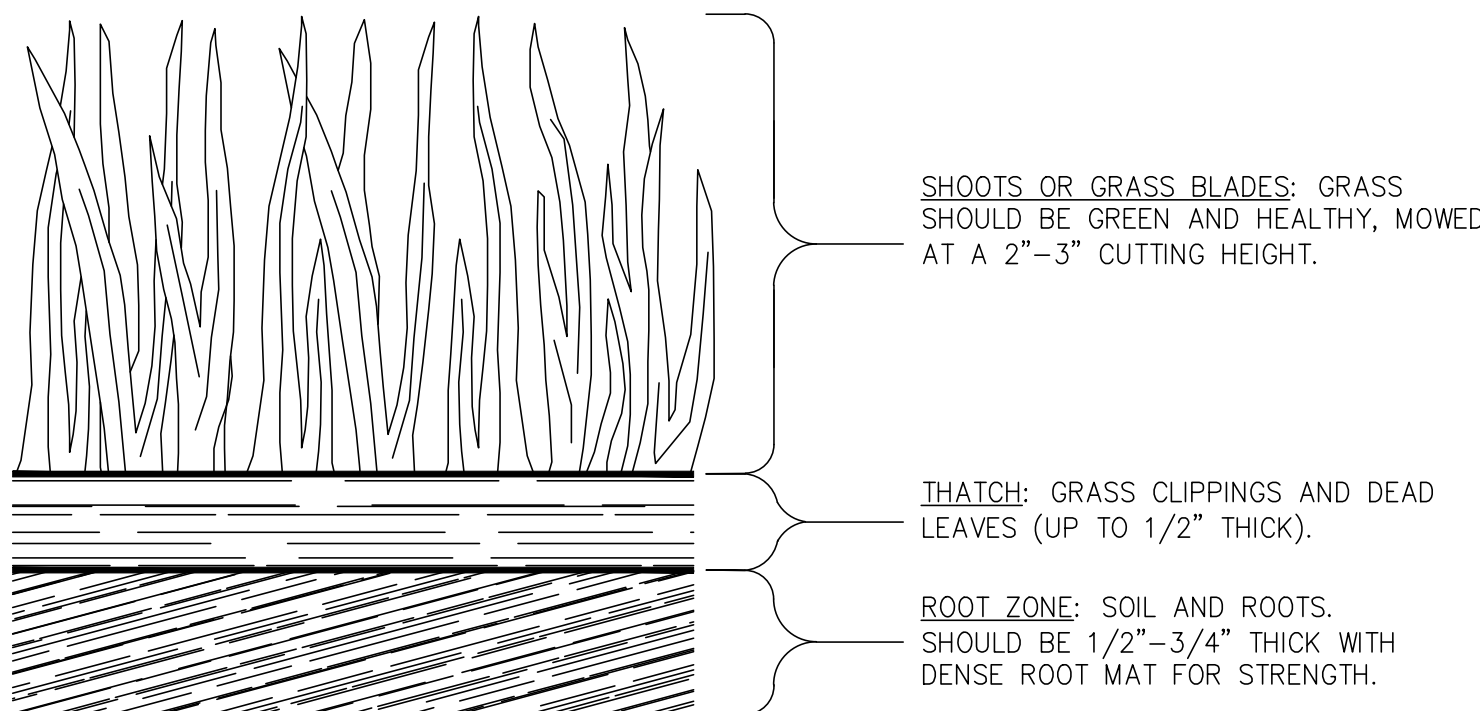
DIRECTIONS FOR INITIAL MAINTENANCE

STEP 1. ROLL SOD IMMEDIATELY TO ACHIEVE FIRM CONTACT WITH THE SOIL.

STEP 2. WATER TO A DEPTH OF 4" AS NEEDED. WATER WELL AS SOON AS THE SOD IS LAID.

STEP 3. MOW WHEN THE SOD IS ESTABLISHED -- IN 2-3 WEEKS. SET THE MOWER HIGH (2"-3").

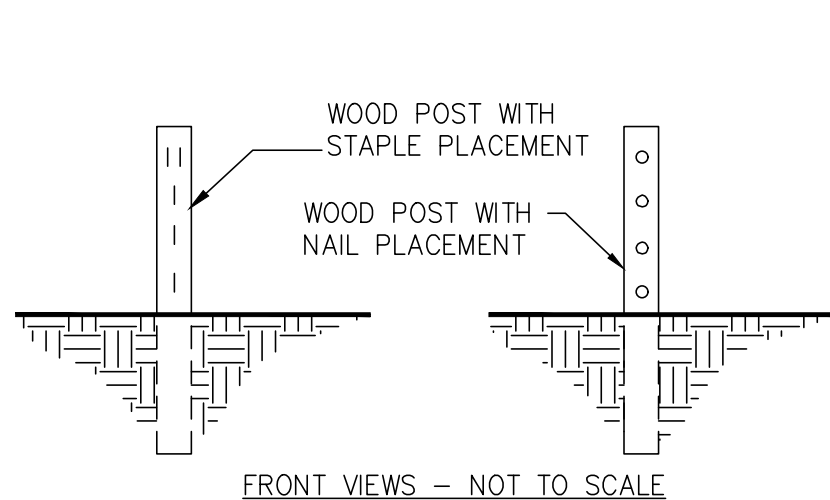
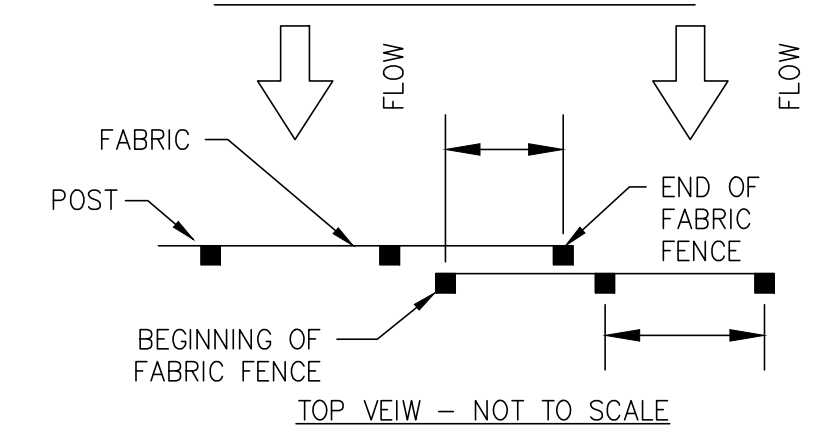
APPEARANCE OF GOOD SOD



SOD MAINTENANCE AND INSTALLATION

NOT TO SCALE

OVERLAP AT FABRIC ENDS



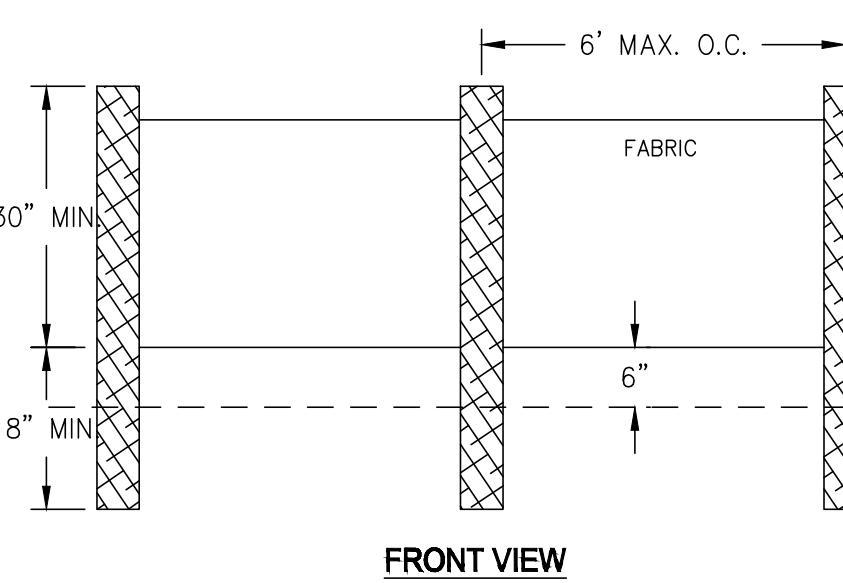
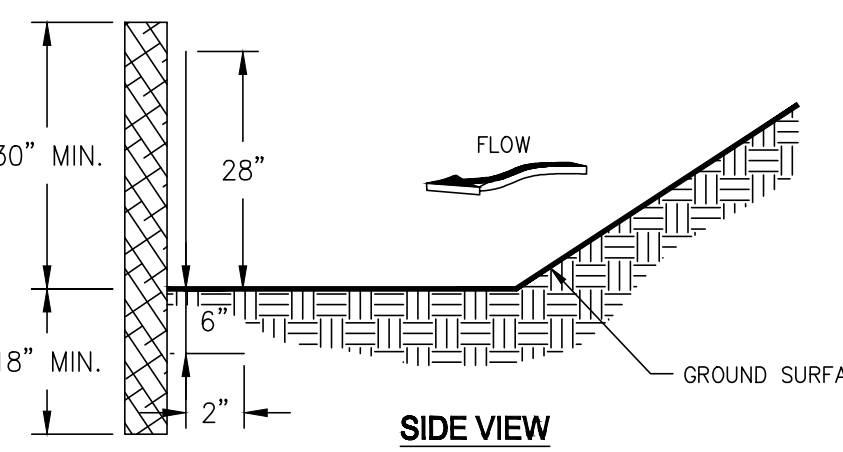
NOTES:

1. THE FABRIC AND WIRE SHOULD BE SECURELY FASTENED TO POSTS AND FABRIC ENDS MUST BE OVERLAPPED A MINIMUM OF 18" OR WRAPPED TOGETHER AROUND A POST TO PROVIDE A CONTINUOUS FABRIC BARRIER.

FASTENERS FOR SILT FENCES

NOT TO SCALE

Sd1-NS



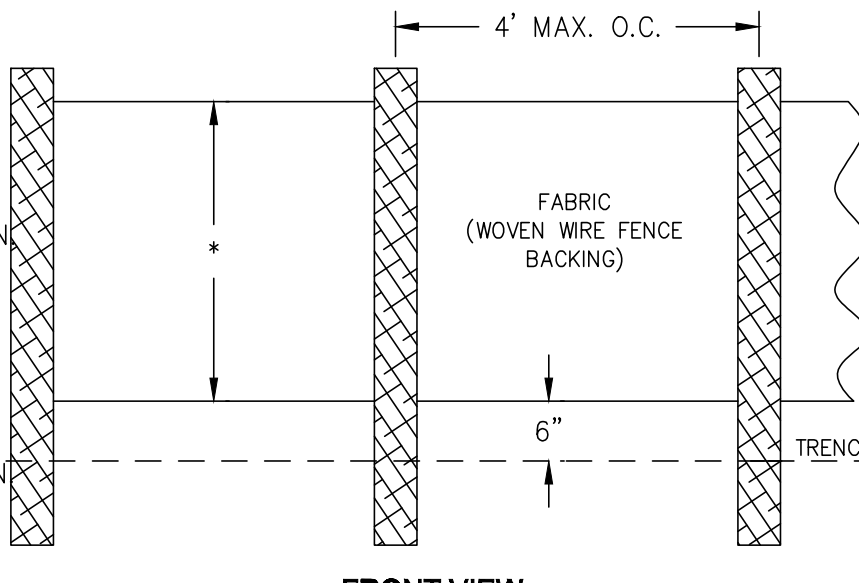
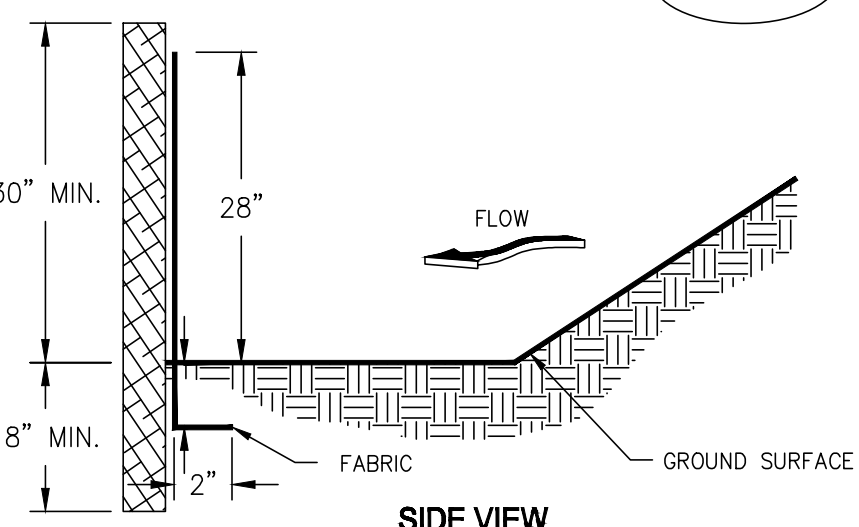
NOTES:

1. USE STEEL OR WOOD POSTS OR AS SPECIFIED BY THE EROSION, SEDIMENTATION, AND POLLUTION CONTROL PLAN.

SILT FENCE - TYPE NON-SENSITIVE

NOT TO SCALE

Sd1-S



NOTES:

1. USE STEEL OR WOOD POSTS OR AS SPECIFIED BY THE EROSION, SEDIMENTATION, AND POLLUTION CONTROL PLAN.

SILT FENCE - TYPE SENSITIVE

NOT TO SCALE



BRUNSWICK-GLYNN JOINT WATER & SEWER COMMISSION
PLANNING & CONSTRUCTION DIVISION
1703 Gloucester Street
Brunswick, Georgia 31520
(912) 261-7110 Phone
(912) 261-7178 Fax
www.bgwsc.org

NO.	DATE	COMMENTS

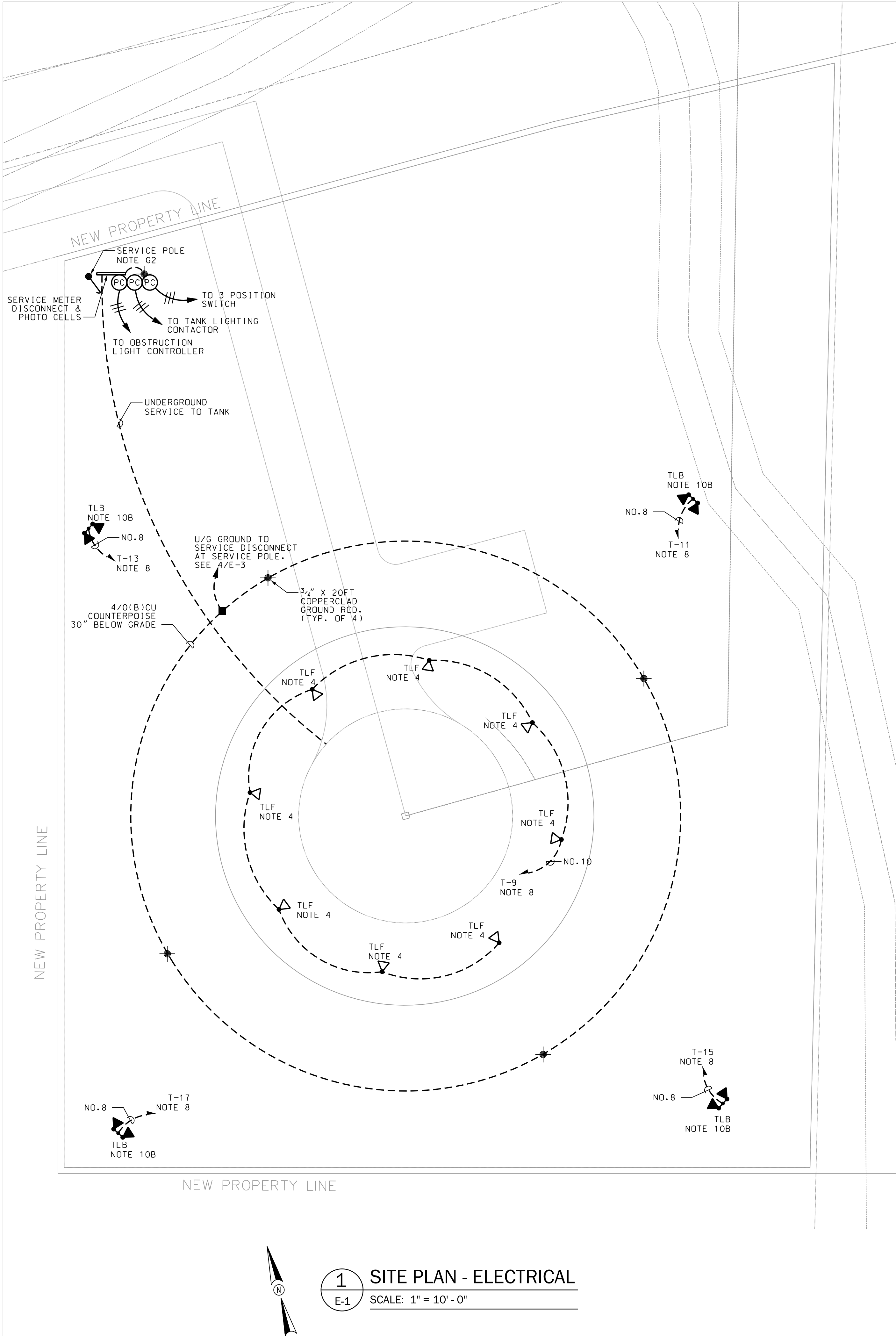
EXIT 42 750,000 GALLON ELEVATED STORAGE TANK
GLYNN COUNTY, GEORGIA
BRUNSWICK-GLYNN COUNTY JOINT WATER & SEWER COMMISSION

FILE NO.:	PROJ. #	DATE:	SCALE:	AS SHOWN	DRAWN BY:

SHEET NO.:

P-6

OF 6



1 SITE PLAN - ELECTRICAL
E-1 SCALE: 1" = 10' - 0"

GENERAL NOTES:

- PROVIDE GREEN EQUIPMENT GROUNDING CONDUCTOR IN ALL RACEWAYS. SEE THE SPECIFICATIONS.
- COORDINATE THE ELECTRICAL SERVICE WITH GEORGIA POWER, CONTACT GREG MCCRANIE, DISTRIBUTION ENGINEER, 912-267-5127.
- WHERE CONDUCTOR SIZE IS SHOWN FOR CIRCUIT, IT SHALL BE MAINTAINED FOR ENTIRE CIRCUIT.
- ALL CONDUITS INSTALLED EXPOSED ABOVE GRADE SHALL BE ALUMINUM RIGID CONDUIT (ARC) CONDUIT, ALL CONDUITS INSTALLED BELOW GRADE AND WHERE NOTED SHALL BE SCH. 80 PVC. MINIMUM BURIAL DEPTH TO BE 24". PROVIDE DETECTABLE WARNING TAPE 12" BELOW FINISH GRADE, DIRECTLY ABOVE CONDUITS.
- SEAL ALL CONDUITS ENTERING PANELS WITH DUCT SEAL.
- CIRCUIT BREAKER AND SWITCH OPERATING HANDLES SHALL BE A MAXIMUM OF 66" ABOVE FINISHED GRADE. LOCATE CONTROL PANEL, SERVICE BREAKER, AND SURGE PROTECTION DEVICE WHERE INDICATED.
- POSITION ELECTRICAL EQUIPMENT FOR BEST ACCESS TO ELECTRICAL EQUIPMENT.
- ENCLOSED CIRCUIT BREAKER SHALL BE U.L. APPROVED FOR USE AS SERVICE ENTRANCE EQUIPMENT, WITH INSULATED BONDED NEUTRAL, - BOND GROUNDING ELECTRODE CONDUCTOR AND NEUTRAL, PROVIDE SEPARATE MECHANICAL LUG TERMINATIONS FOR EACH CONDUCTOR, CONNECT EQUIPMENT GROUNDING CONDUCTOR WITH MECHANICAL LUG ATTACHED TO ENCLOSURE.
- ALL ATTACHMENT HARDWARE SHALL BE STAINLESS STEEL, PROVIDE 316 STAINLESS STEEL 1 3/4" X 1 3/8" CHANNEL (B-LINE B22 OR EQUAL), CONDUIT PIPE CLAMPS, NUTS, BOLTS AND WASHERS.
- APPLY TWO COATS OF 3M SCOTCHRAP PIPE PRIMER AND TWO OVERLAPPING LAYERS OF 3M SCOTCHRAP 51 TAPE, APPLY FROM THE BOTTOM OF THE STRUCTURAL SUPPORT OR CONDUIT TO 6" ABOVE GRADE, APPLY TWO COATS OF 3M SCOTCHRAP PIPE PRIMER TO THE INTERIOR OF THE VERTICAL FRAME MEMBERS FOR 12" UP FROM THE BOTTOM.
- THE SURGE PROTECTION DEVICE SHALL BE INTERNAL/INTEGRAL TO THE PANEL, PROVIDE SQUARE D IMA SERIES, OR EQUAL BY GE/ABB OR EATON. SEE ONE-LINE 1/E-3 FOR REQUIRED CHARACTERISTICS.

TANK LIGHTING SPECIFICATIONS

PROVIDE TANK LIGHTING SYSTEM AS SPECIFIED AND AS NOTED ON THE DRAWINGS. THE LIGHTING SYSTEM SHALL BE BY TGS SPORTS AND WE-EF LIGHTING, PROVIDED THROUGH SESCO, CONTACT MONIQUE NORMAN (770) 449-7045 OR RUTH HUDSON (512) 657-7697.

EQUIVALENT SYSTEMS ARE ACCEPTABLE SUBJECT TO THE ENGINEER'S REVIEW.

THE SYSTEM SHALL BE COMPLETE INCLUDING ALL FIXTURES WITH MOUNTING ACCESSORIES, POLES AND WIRING, RELAY PANEL, AND PHOTO CELL. FIXTURES.

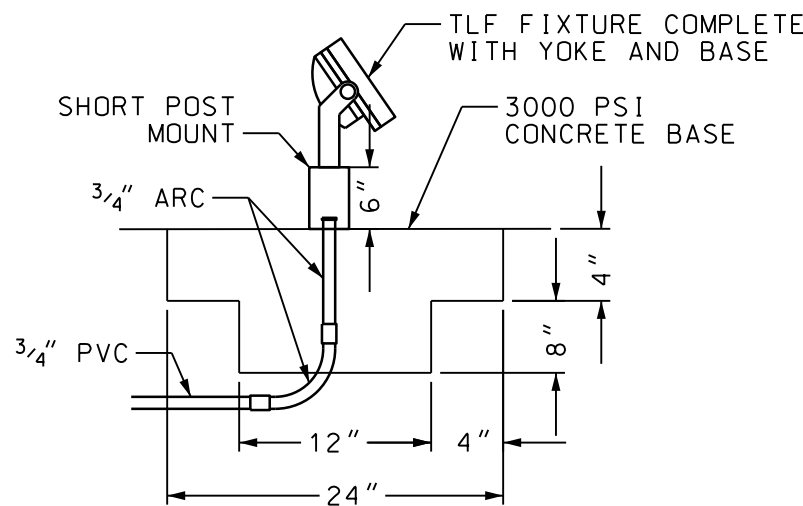
INCLUDE IN PROJECT FOR FACTORY STARTUP, AIMING, AND DEMONSTRATION OF OPERATION TO OWNER AND ENGINEER.

LIGHTING FIXTURES TO BE RATED 120V EACH, AND 5 YR WARRANTY:

- TLB: TWO TGS SPORTS TRITON G2 FIXTURES MOUNTED ON A DUAL BULLHORN SLIPFITTER ON A 40 FT MTG. HEIGHT DIRECT BURIAL FIBERGLASS POLE (5000°C/400W/52,000LM EA), DARK BRONZE POLE: WISCONSON LIGHTING LAB - PL-RTFD040-8553-7-FL-FP-DB BULL HORN: WISCONSON LIGHTING LAB - NP/VA-B-BLH-R24-2-FP-DB FIXTURES: TGS SPORTS - SPL2-400-50-U-D0-6-80CRI-LG-SF
- TLF: MARINE GRADE, DIE-CAST ALUMINUM ALLOY FIXTURE WITH INTEGRAL DRIVER, WALL WASH DISTRIBUTION, 4000°K, 112W/9982LM, WITH SHORT POST EM, DARK BRONZE FIXTURES: WE-EF LIGHTING - FLC240 LED-RAL8019

LEGEND

- HOME RUN, CIRCUIT AS NOTED. SLASH MARKS INDICATE MORE THAN 2 CONDUCTORS. PROVIDE GROUND CONDUCTOR (NOT SHOWN) IN ALL CONDUITS.
- EXPOSED RACEWAY
- 3/4"C W/ ONE 16 AWG T.S. PAIR CABLE (BELDEN 5240F1)
- UNDERGROUND RACEWAY
- WALL MOUNTED LED FIXTURE & OUTLET BOX
- OBSTRUCTION LIGHTS - SEE NOTE G12
- BATTERY POWERED EMERGENCY LIGHT
- SWITCH, 48" AFF
- THREE-WAY SWITCH, 48" AFF
- RECEPTACLE, 48" AFF. NUMERICAL NUMBER ADJACENT TO DEVICE INDICATES BRANCH CIRCUIT NUMBER.
- 20 AMP RECEPTACLE, 48" AFF. NUMBER ADJACENT TO DEVICE INDICATES BRANCH CIRCUIT NUMBER.



2 GROUND MOUNTED FIXTURE DETAIL
E-1 SCALE: NONE

G12.PROVIDE OBSTRUCTION LIGHTING ON TANK IN ACCORDANCE WITH FAA AC 70/7460-1K.

TANK TOP BEACONS SHALL BE CROUSE-HINDS 12004-D1CWFH409, L865/L864 GENERAL USE LED DUAL BEACON, MEDIUM INTENSITY, PROVIDE DUAL FIXTURE MOUNT WITH TWO BEACONS. TANK SIDE BEACONS: 12004-RT0-CR27-001 L-810 LED OBSTRUCTION LIGHTS W/INTEGRAL IR

PROVIDE OBSTRUCTION LIGHTING CONTROL PANEL, CROUSE-HINDS OLC429CM-X-1RW-##-1M-WBU-N4; PROVIDE WITH LIGHTNING ARRESTOR, ALTERNATING FEATURE (FOR TANK BEACONS) AND AUXILIARY CONTACTS FOR ALARM ANNUNCIATION TO SCADA SYSTEM, PROVIDE PHOTO ELECTRIC CONTROLLER, CROUSE-HINDS 52010, AND ALARM INDICATING LIGHT, CROUSE-HINDS 12010-001-R.

ALL CONDUIT FOR BEACONS AND OBSTRUCTION LIGHTS, EXPOSED ON THE INTERIOR OF THE TANK, SHALL BE ALUMINUM. COORDINATE WITH THE TANK CONTRACTOR FOR MOUNTING POINTS TO SECURE CONDUIT TO THE TANK STRUCTURE. COORDINATE CONDUIT SUCH THAT IT DOES NOT PASS THROUGH ANY OF THE LOGO/SIGNS PAINTED ON THE TANK. PAINT ALL EXPOSED EXTERIOR CONDUIT TO MATCH THE TANK FINISH.

G13.ALL WIRING FOR TANK OBSTRUCTION LIGHTS SHALL BE INSTALLED IN CONDUIT, EXTEND TO CAST WP JUNCTION BOX AT TOP OF TANK. EXTEND CIRCUIT SHOWN FROM PANEL T. DEMONSTRATE OPERATION OF LIGHTS.

G14.PROVIDE NEMA 1 PAINTED STEEL ENCLOSURE FOR OBSTRUCTION LIGHT CONTROL PANEL. MOUNT ENCLOSURE ON WALL.

G15.THE SCADA SYSTEM SHALL BE PROVIDED BY ELECTRIC MACHINE CONTROL, TRUSSVILLE AL. CONTACT BRIAN THOMASON, VP SALES & MARKETING, 205-661-3998. PROVIDE CONDUIT AND CONDUCTORS AS SHOWN IN RISERS.

G16.PROVIDE FREEZE PROTECTION HEAT TRACING ON ALL EXPOSED TUBING, SPECIFICALLY FOR THE PRESSURE TRANSDUCER. FURNISH PRODUCTS OF JMP OR APPROVED EQUAL; PROVIDE 5-FLX-1-0J (5W/FT) HEATING CABLE, PCA-COM TRACE PLUS KIT, B4X-15140 THERMOSTAT, AL-20L ALUMINUM TAPE, AND ALL NECESSARY COMPONENTS FOR A COMPLETE SYSTEM. PROVIDE ARMAFLEX INSULATION ON ALL PIPING WITH HEAT TAPE. CONNECT TO CIRCUIT T-10.

G17.THE TANK SCADA PANEL SHALL MONITOR THE TANK LEVEL, ALARM CONDITIONS FROM THE OBSTRUCTION LIGHTING SYSTEM AND DOOR CONTACTS.

G18.THE TANK GROUND RING SHALL BE 4/0 BARE COPPER STRANDED CONDUCTOR, TERMINATIONS TO GROUND RODS AND TANK STEEL SHALL BE EXOTHERMIC WELD. THE CONDUCTOR SHALL BE INSTALLED 30" BELOW FINISH GRADE, EXTEND 4/0 COPPER BONDING CONNECTIONS TO THE TANK STEEL AT EACH QUADRANT, THE TANK STRUCTURAL STEEL REINFORCING, THE BOTTOM OF THE STEEL TANKBOWL, AND THE STEEL WATER PIPE.

G19.EXTEND CONDUIT AND CONDUCTORS FOR AREA NEAR DOOR HEADERS TO SCADA PANEL. CONNECT ALL DOORS IN THE STRUCTURE IN PARALLEL. PROVIDE BOX WITH BLANK COVER AND CONDUIT AND CONDUCTORS TO SCADA PANEL.

- PROVIDE A 8-POLE ELECTRICALLY HELD LIGHTING CONTACTOR FOR CONTROL OF THE TANK LIGHTING SYSTEM, FURNISH A SQUARE D LG80 CONTACTOR WITH AUXILIARY CONTACTS FOR ANNUNCIATION TO THE SCADA SYSTEM. FURNISH WITH A 120V COIL, H-0-A SWITCH AND NAMEPLATE.
- THE PHOTOCCELL FOR THE TANK LIGHTING SYSTEM SHALL BE MOUNTED ON THE EQUIPMENT RACK AT THE SERVICE DISCONNECT.
- FIBERGLASS POLES TO BE NOMINAL 40 FT MOUNTING HEIGHT, SET IN GROUND 6 FT FOR 40 FT MOUNTING HEIGHT, PROVIDE TENON MOUNT WITH DUAL BULLHORN MOUNT FOR FIXTURE TENON. POLE TO BE DARK BRONZE, RATED FOR 140 MPH WITH FIXTURES AND MOUNT. THE POLES SHALL BE LOCATED 90°APART, 70' FROM THE TANK SHAFT CENTER.
- THE TANK SHAFT LIGHTING SHALL BE MOUNTED ON A CONCRETE FOUNDATION WITH MANUFACTURER FURNISHED STANCHION. THE FIXTURES SHALL BE LOCATED 45°APART, 25' FROM THE TANK CENTER/8' FROM THE TANK SHAFT EXTERIOR.

- GROUND
- BREAKER
- GROUND ROD LOCATION - 3/4" X 20 FT COPPERCLAD
- FLEX CONNECTION, 18" MAX
- PANELBOARD
- EQUIPMENT AS NOTED
- JUNCTION BOX
- PHOTOCCELL, 2000 W/600VA(LED), FAILED CLOSED, TORK MODEL 2129. MOUNT TO SIDE OF BUILDING, AIM AWAY FROM ARTIFICIAL LIGHTS
- PRESSURE TRANSMITTER. SEE SPECIFICATIONS.
- SURGE PROTECTION DEVICE. SEE ONE-LINE, 1/E-3
- GROUND FAULT INTERRUPTING TYPE 'WR' W/ "WHILE-IN-USE" COVER
- WEATHER PROOF
- SCADA ANTENNA ON POST
- DOOR CONTACT. SEE NOTE G19.

GEORGIA
Professional Engineer
20 May 2024
CHARLES B. COBB

BRUNSWICK-GLYNN JOINT WATER & SEWER COMMISSION

BRUNSWICK-GLYNN JOINT WATER & SEWER COMMISSION PLANNING & CONSTRUCTION DIVISION
1703 Gloucester Street
Brunswick, Georgia 31520
(912) 261-7110 Phone
(912) 261-7178 Fax
www.bgjwsc.org

FILE NO.:	DATE:	SCALE:	DRAWN BY:
PROJ. #2213	MAY 20, 2024	AS SHOWN	LC

EXIT 42 750,000 GALLON ELEVATED STORAGE TANK
GLYNN COUNTY, GEORGIA
BRUNSWICK-GLYNN COUNTY JOINT WATER & SEWER COMMISSION
ELECTRICAL SITE PLAN

COMMENTS:
REVISIONS

OF E-1

E:\BGCJWSC Exit 42 Elevated Tank - 24033.00\CADD\E1.dgn

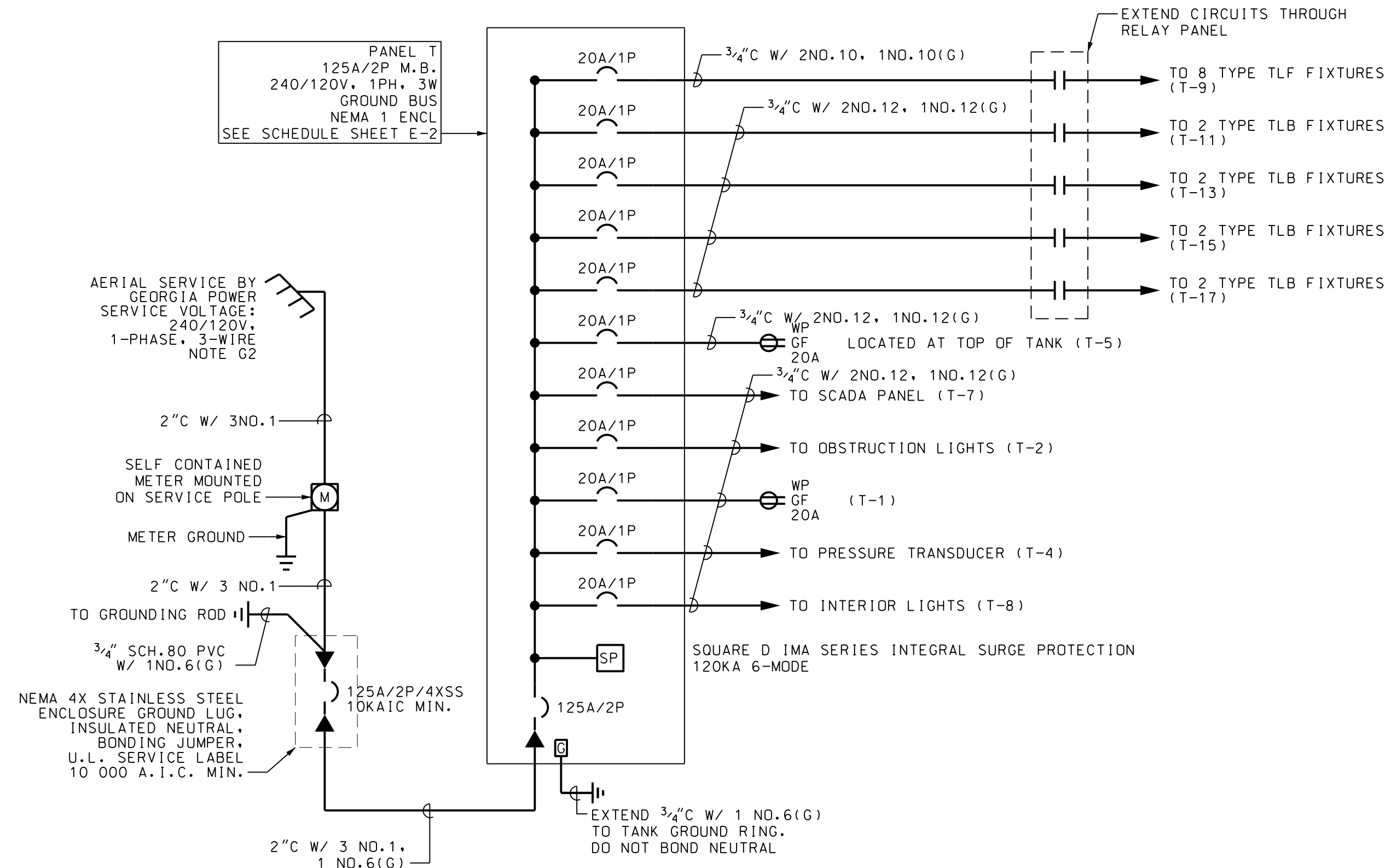


3 TANK GROUND LEVEL PLAN - POWER

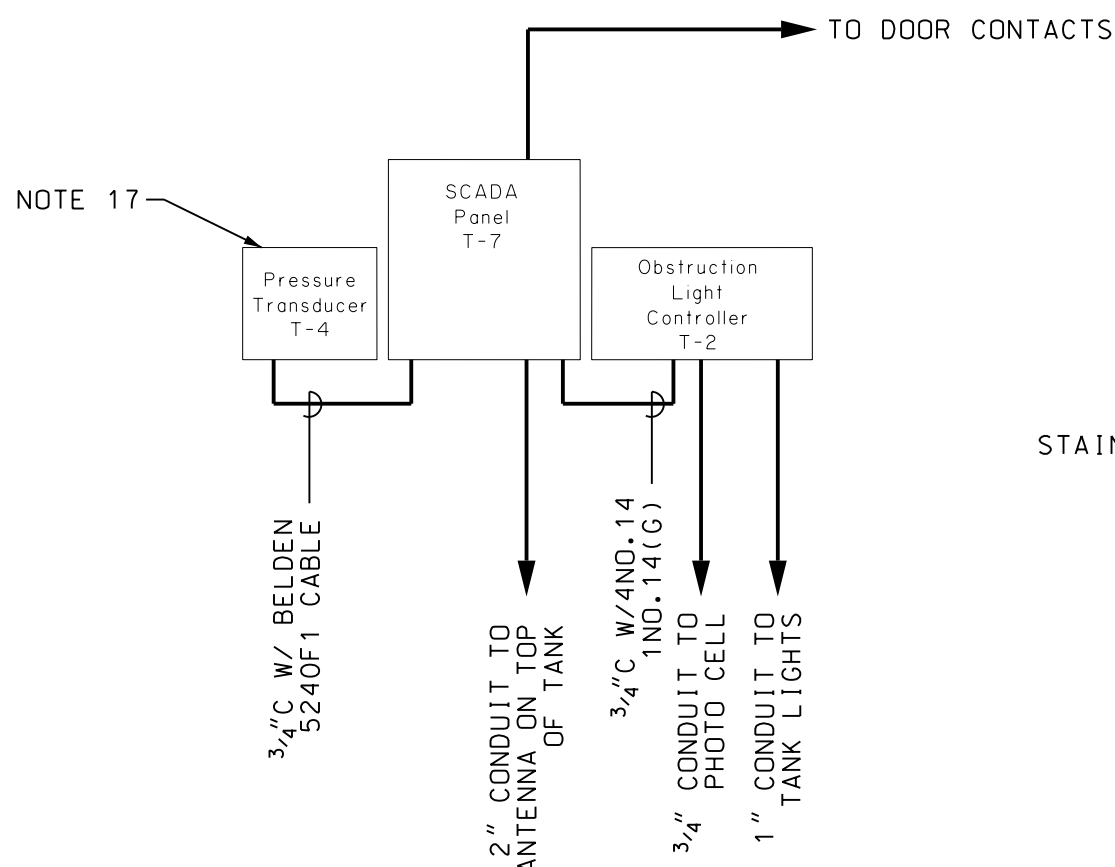


2 TANK GROUND LEVEL PLAN - LIGHTING
E-2 SCALE: 1/4" = 1' - 0"





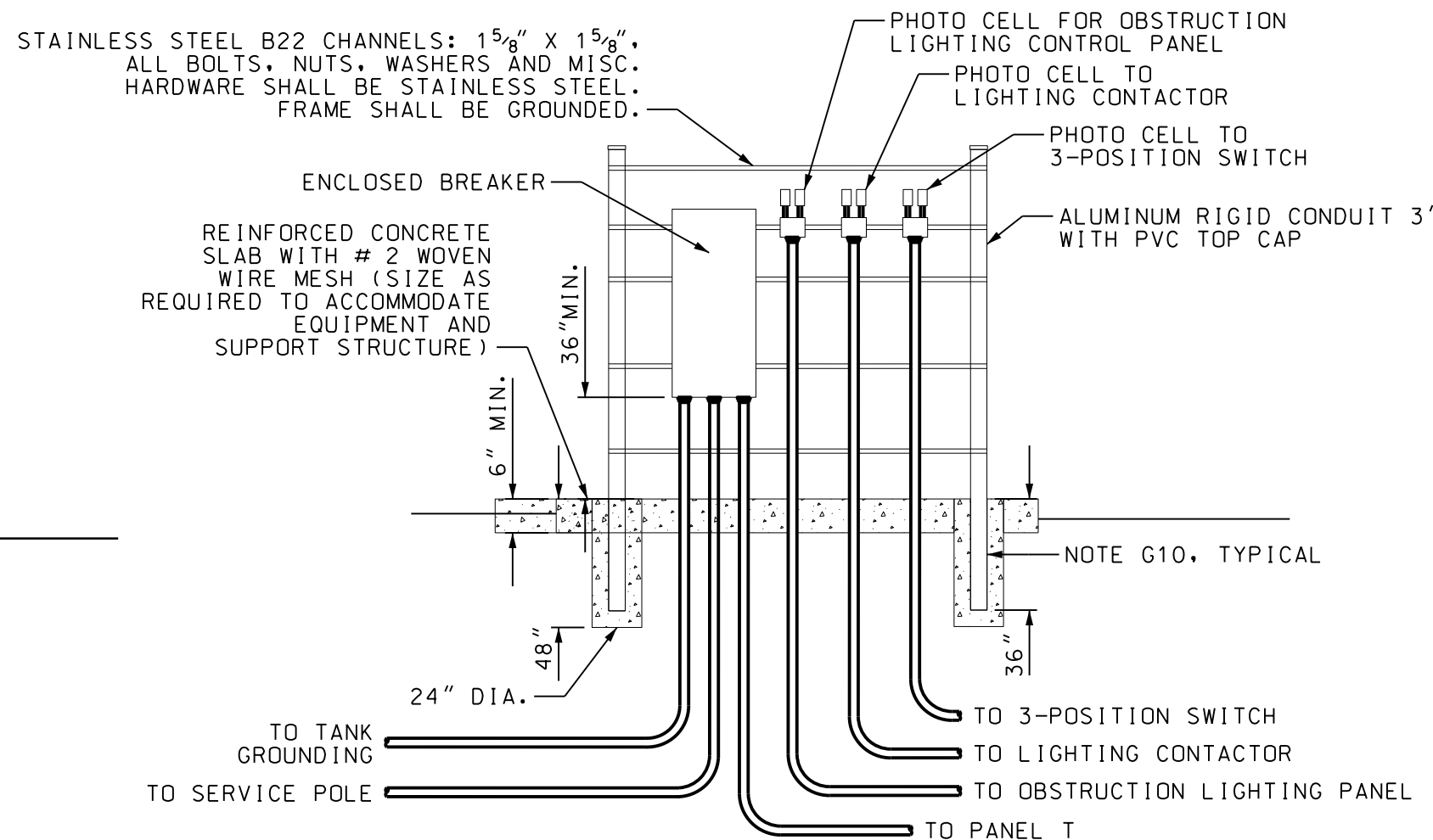
1 ONE-LINE DIAGRAM
E-3 SCALE: NONE



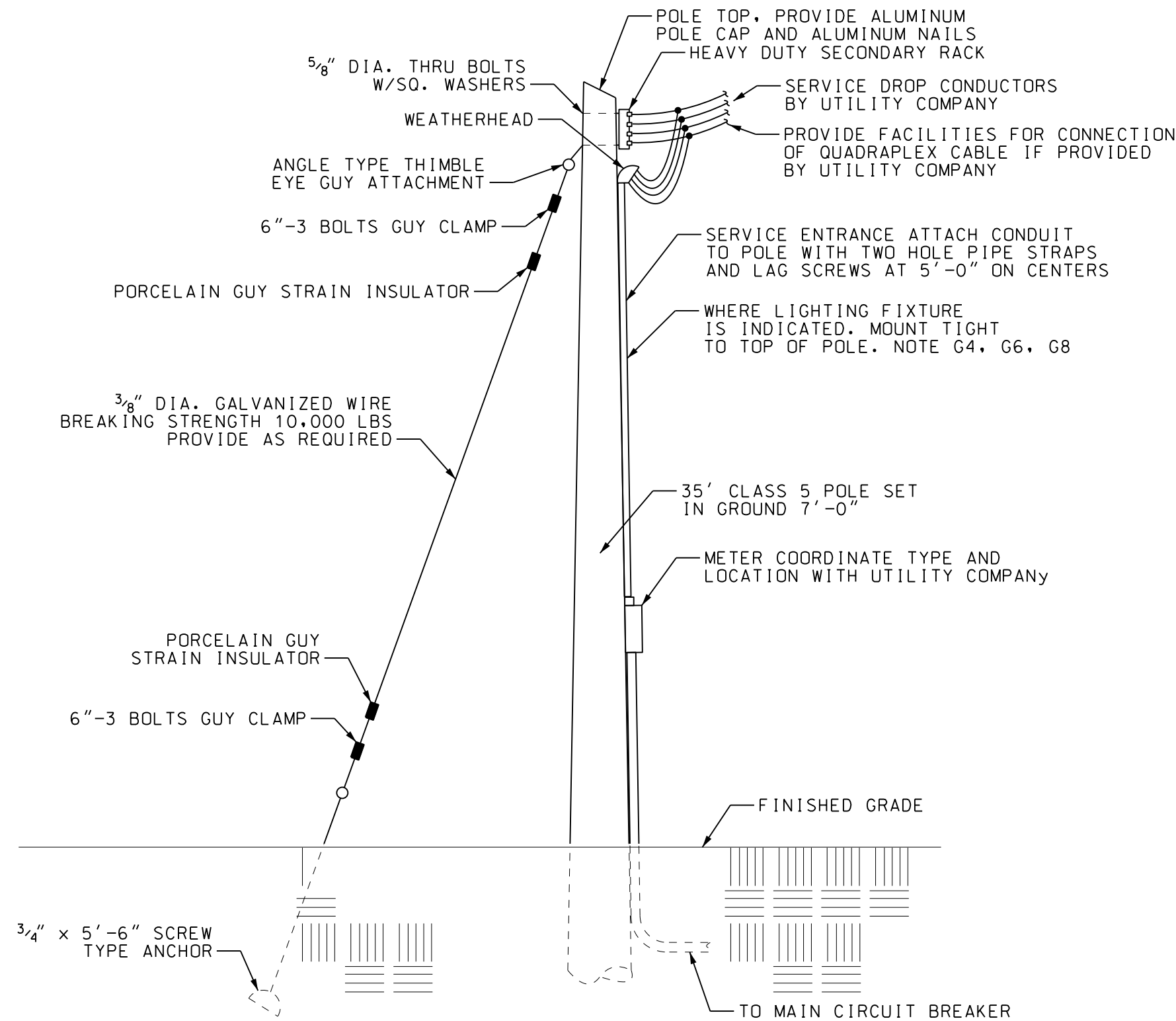
NOTES - SCADA RISER DIAGRAM

- A. OMITTED.
- B. PROVIDE WIRING FOR SCADA INCLUDE FOLLWING POINTS:
- | TYPE POINT | DESCRIPTION |
|------------|----------------------------------|
| A1 | PRESSURE |
| D1 | OBSTRUCTION LIGHT CONTROLLER (2) |
| D1 | DOOR CONTACTS |

2 SCADA RISER DIAGRAM
E-3 SCALE: NOT TO SCALE



3 DISCONNECT FRAME ELEVATION
E-3 SCALE: NOT TO SCALE



4 SERVICE POLE
E-3 SCALE: NONE

GEORGIA
Professional Engineer
No. 032192
20 May 2024
Charles B. Cobb

BRUNSWICK-GLYNN
JOINT WATER & SEWER COMMISSION

BRUNSWICK-GLYNN JOINT WATER & SEWER COMMISSION
SEWER COMMISSION PLANNING & CONSTRUCTION DIVISION
1703 Gloucester Street
Brunswick, Georgia 31520
(912) 261-7110 Phone
(912) 261-7178 Fax
www.bgjwsc.org

FILE NO.:
PROJ. #2213

DATE:
MAY 20, 2024

SCALE:
AS SHOWN

DRAWN BY:
LC

OF

E-3

COMMENTS:
-

DATE:
-

NO.:
-

REVISIONS

ONE-LINE DIAGRAM & ELECTRICAL DETAILS

E:\BGCJWSC Exit 42 Elevated Tank - 24033.00\CADD\E3.dgn