



**Brunswick-Glynn Joint Water and Sewer Commission**  
**1703 Gloucester Street, Brunswick GA 31520**  
**Thursday, December 21, 2023, at 2:00 pm**  
**Commission Meeting Room**

## **COMMISSION MEETING AGENDA**

### **Call to Order**

### **Invocation**

### **Pledge**

### **PUBLIC COMMENT PERIOD**

*Public Comments will be limited to 3 minutes per speaker. Comments are to be limited to relevant information regarding your position and should avoid being repetitious. Individuals should sign in stating your name, address and the subject matter on which you wish to speak. Your cooperation in this process will be greatly appreciated.*

### **SPECIAL RECOGNITION - Georgia Association of Water Professionals “Gold Award Recipient”** Water Distribution System Excellence Award

### **RECOGNITION OF SERVICE**

**Kendra Rolle** – Recognition of Two Years of Service as Commissioner for the Brunswick-Glynn Joint Water & Sewer Commission (2022 – 2023)

**Tripp Stephens** – Recognition of Six Years of Service as Commissioner for the Brunswick-Glynn Joint Water & Sewer Commission (2018 – 2023)

**Tripp Stephens** – Recognition of Service as Vice-Chairman for the Brunswick-Glynn Joint Water & Sewer Commission (2023)

### **COMMITTEE UPDATES**

**Facilities Committee** – Chairman Turnipseed

**Finance Committee** – Committee Chairman Stephens

### **APPROVAL**

1. **Minutes from November 16, 2023, Commission Meeting** (subject to any necessary changes) [Report](#)
2. **Change Order #2 – AMI Meter Replacement Project** – L. Roberts [Report](#)
3. **JWSC Design & Construction Standards; 2024 Revision** – T. Kline [Report](#) [Standards](#)
4. **Dedication of Infrastructure** – T. Kline [Report](#)
  - **Walker Point Subdivision Phase 2**

### **EXECUTIVE DIRECTOR’S UPDATE**

### **COMMISSIONERS’ DISCUSSION**

### **CHAIRMAN’S UPDATE**

### **EXECUTIVE SESSION**

### **MEETING ADJOURNED**

*All citizens are invited to attend.  
There is a possibility of a quorum of City or County Commissioners being present.*



**Brunswick-Glynn Joint Water and Sewer Commission  
1703 Gloucester Street, Brunswick, GA 31520  
Thursday, December 21, 2023, at 2:00 PM**

**COMMISSION MINUTES**

**PRESENT:**                                **G. Ben Turnipseed, Chairman**  
   **Tripp Stephens, Vice-Chairman**  
   **Charles Cook, Commissioner**  
   **Clayton Watson, Commissioner**  
   **Wayne Neal, Commissioner**  
   **Kendra Rolle, Commissioner – Via Teleconference**

**ALSO PRESENT:**                    **Andrew Burroughs, Executive Director**  
   **Chas Whitehead, HBS Legal Counsel**  
   **LaDonnah Roberts, Deputy Executive Director**  
   **Todd Kline, Director of Engineering**  
   **David Owens, Director of Finance**  
   **Janice Meridith, Executive Commission Admin.**

**ABSENT:**                                **Chad Strickland, Commissioner**

Chairman Turnipseed called the meeting to order at 2:00 PM.

Chairman Turnipseed provided the invocation and Commissioner Stephens led the Pledge of Allegiance.

**PUBLIC COMMENT PERIOD**

Chairman Turnipseed opened the public comment period.

There being no public comment, Chairman Turnipseed closed the public comment period.

**SPECIAL RECOGNITION**

**Georgia Association of Water Professionals “Gold Award Recipient”**

Chairman Turnipseed presented the Georgia Association of Water Professionals Gold Award. He congratulated and recognized Alvin Hall (Water Distribution) and Donnie Bankston (Water Production) for their outstanding efforts and hard work. This is the fourth year JWSC has earned this award for “Water Distribution System Excellence.”

**RECOGNITION OF SERVICE**

**Kendra Rolle** – Recognition of two years of service as Commissioner for the Brunswick-Glynn Joint Water and Sewer Commission (2022-2023). Via teleconference Chairman Turnipseed presented Commissioner Rolle with a plaque recognizing her service with JWSC. He thanked her and stated that she has been a great asset for JWSC and for the City of Brunswick.

**Tripp Stephens** – Recognition of six years of service as Commissioner for the Brunswick-Glynn Joint Water and Sewer Commission (2018-2023). Chairman Turnipseed presented Commissioner Stephens with a plaque recognizing his service with JWSC. He congratulated and expressed his appreciation to

Commissioner Stephens, adding mention that they came on the Board at the same time. The Chairman then presented the plaque for Vice-Chairman.

**Tripp Stephens** – Recognition of service as Vice-Chairman for the Brunswick-Glynn Joint Water and Sewer Commission (2023). The Chairman noted that Commissioner Stephens has been a member of the Facilities Committee, the Finance Committee, and held the office of Vice-Chairman of the Commission. Commissioner Neal also expressed his appreciation to Commissioner Stephens.

## **COMMITTEE UPDATES**

**Facilities Committee** – Chairman Turnipseed stated that the Facilities Committee met the previous day. The Committee approved the following to be forwarded to the full Commission: Change Order #2 for the AMI Meter Replacement Project, the 2024 revision of the JWSC Design and Construction Standards, and a dedication for Walker Point. The Water Production Report, WPCF Plant Flows Report, and the Capital Projects Report were all reviewed and indicate that JWSC's facilities are doing very well.

**Finance Committee** – Commissioner Cook stated that the Finance Committee also met the previous day. The Committee reviewed and approved Change Order #2 for the AMI Meter Replacement Project. The Committee reviewed the financial statement for the month ending November 30, 2023. Commissioner Cook commented that JWSC is doing well financially. He noted that the Director of Finance has been readily reinvesting bonds and getting better interest rates for JWSC's investments.

## **APPROVAL**

### **1. Minutes from the November 16, 2023, Regular Commission Meeting**

Commissioner Cook made a motion seconded by Commissioner Watson to approve the minutes from the November 16, 2023, Regular Commission Meeting. Motion carried 6-0-1. (Commissioner Rolle voted Yes via Teleconference. Commissioner Strickland was absent.)

### **2. Change Order #2 – AMI Meter Replacement Project – L. Roberts**

Mrs. Roberts presented the close-out Change Order #2 for the AMI Meter Replacement Project and provided a brief explanation of the details along with a Power Point for visuals. The project goals noted were: To support water conservation efforts, replace outdated and non-working meters, and to improve customer service through better data and more efficient use of resources. Mrs. Roberts highlighted the project history from the Pilot Phase throughout the project to the completion. A final analysis of the costs occurred with a resulting change order with a deduction in the amount of \$1,557,102.12.

Commissioner Cook made a motion seconded by Commissioner Neal that the Brunswick-Glynn Joint Water and Sewer Commission approve Change Order No. 2 as the close-out change order to Delta Municipal Supply Company's contract in the credit amount of \$1,557,102.12. Motion carried 6-0-1. (Commissioner Rolle voted Yes via Teleconference. Commissioner Strickland was absent.)

### **3. JWSC Design & Construction Standards; 2024 Revision – T. Kline**

Mr. Kline stated that the goal of JWSC is to safely and effectively serve the water and wastewater needs of Glynn County. The JWSC Standards document is the primary reference in bringing new growth and improvement of the public system to reality. He noted that the current JWSC Standards document was last revised in 2012. A draft revision was created through the efforts of the Planning & Construction Division, all Operational Divisions, as well as an outside consultant. This draft was presented to the JWSC Board of Commissioners on April 20<sup>th</sup>. Commissioner feedback was reviewed and incorporated into the draft. This draft was then provided to a representative group of stakeholders including regional developers, builders, contractors, engineers, and regulators. The stakeholders were then invited to attend an open forum presentation on December 5<sup>th</sup>. Subsequent feedback was received, reviewed, and incorporated. The resulting draft is a product of the efforts of all levels of JWSC staff, JWSC Leadership, and stakeholders. A great level of importance was placed on the incorporation of Operational feedback. This allows Operational staff to maintain confidence in the Planning & Construction review and approval of public system improvements that they would be charged with maintaining in perpetuity. Mr. Kline also stated that if approved by the

JWSC Board of Commissioners, this revision draft will then be submitted to the Georgia Environmental Protection Division (EPD) for review. Once approved by EPD, the updated JWSC Standards may then be placed into use.

Commissioner Cook made a motion seconded by Commissioner Watson that the Brunswick-Glynn Joint Water and Sewer Commission, upon GA EPD approval, approve this document as the JWSC Standards for Water & Wastewater System and Design and Construction, to supersede all previous Standards versions. Motion carried 6-0-1. (Commissioner Rolle voted Yes via Teleconference. Commissioner Strickland was absent.)

#### **4. Dedication of Infrastructure – T. Kline**

- **Walker Point Subdivision Phase 2**

Mr. Kline provided that Walker Point, LLC, the developer of the Walker Point Phase 2 project wishes to dedicate private water and sewer infrastructure to JWSC. They have submitted necessary legal documents defining the transfer of ownership and conveying the easement for access and maintenance. All requirements of the JWSC Standards for Water & Sewer Design and Construction and Development Procedures have been met, and all related documents submitted.

Commissioner Neal made a motion seconded by Commissioner Stephens that the Brunswick-Glynn Joint Water and Sewer Commission approve and accept this project with the associated Dedication of Infrastructure. Motion carried 6-0-1. (Commissioner Rolle voted Yes via Teleconference.)

#### **EXECUTIVE DIRECTOR'S UPDATE**

Mr. Burroughs thanked the Commissioners for another successful year. He congratulated Commissioner Stephens on his new position with an out of state company. The JWSC offices will be closed Friday, December 22 and Monday, December 25. Mr. Burroughs wished all to have a Merry Christmas and a Happy New Year!

#### **COMMISSIONERS' DISCUSSION**

Commissioner Neal asked about the Dunbar Creek issues that occurred over the past weekend. He thanked JWSC for everything done through the past year and noted his appreciation to all members of the JWSC staff.

Commissioner Stephens thanked everyone and noted his appreciation for all working with him through the years.

Commissioner Cook expressed his thanks to the JWSC staff and the Commissioners.

#### **CHAIRMAN'S UPDATE**

The Chairman thanked the Commissioners for all their input and work on projects and added that the JWSC staff has done a great job. He wished everyone a Merry Christmas and noted that there will be a workshop in January as well as a Commission meeting.

#### **EXECUTIVE SESSION**

There was no Executive Session.

#### **ADJOURN**


There being no additional business to bring before the Commission, Chairman Turnipseed requested a motion to adjourn the meeting.




Commissioner Stephens made a motion seconded by Commissioner Cook to adjourn the meeting. Motion carried 6-0-1. (Commissioner Rolle voted Yes via Teleconference. Commissioner Strickland was absent.)

The Chairman adjourned the meeting at 2:55 p.m.

Attest:

  
\_\_\_\_\_  
Janice Meridith,  
Executive Commission Administrator

  
\_\_\_\_\_  
G. Ben Turnipseed,  
Commission Chairman



# ***Brunswick-Glynn***

## ***Joint Water and Sewer Commission***

### ***Memorandum***

---

**To:** Brunswick-Glynn Joint Water and Sewer Commission  
**From:** LaDonnah Roberts, Deputy Executive Director  
**Date:** Thursday, December 21, 2023  
**Re:** APPROVAL – AMI Meter Replacement Project – Change Order #2

---

#### **Background**

Following an extensive search that involved both a Request for Information and a subsequent Request for Proposal process, at staff's recommendation, the BGJWSC Board of Commissioners approved a contract with Delta Municipal Supply Company at the July 16, 2020, meeting. That contract authorized providing a meter data management system and performance of a systemwide change-out of all BGJWSC water meters to an Advanced Metering Infrastructure (AMI) system. On November 18, 2021, the Board approved a "not to exceed" change order to that agreement for additional funding to address certain types of meter assemblies within the system that required additional labor and materials. Apart from some existing reserves that were identified as funding for a Pilot Program, the work was funded via a GEFA loan.

#### **Staff Report**

The project began in August 2020, and it was recently completed at the end of November, which was seven months ahead of schedule. Some projects highlights include the following:

- The Pilot Project phase was successfully completed in December 2020.
- Full installations began in January 2021, and work to place the collectors was completed that month.
- A full-system audit occurred between May and October 2021 while installation work was paused.
- A complete remaining inventory order was placed in November 2021.
- Installations resumed in November 2021 and were completed in November 2023.
- Multiple system training sessions were held in-person for both administrative and field staff.

The work has now been completed, and a final analysis of costs has occurred. The result is a deductive change order in the amount of \$1,557,102.12.

#### **Recommended Action**

Staff is presenting Change Order No. 2 as the close-out change order to the Delta Municipal Supply contract for a credit of \$1,557,102.12, and is requesting the Finance Committee's recommendation for approval to the full Board.

#### **Recommended Motion**

***"I move that the Brunswick-Glynn Joint Water and Sewer Commission approve Change Order No. 2 as the close-out change order to Delta Municipal Supply Company's contract in the credit amount of \$1,557,102.12."***

#### **Attached**

Close-Out Change Order Summary Calculations

## DELTA MUNICIPAL SUPPLY COMPANY

### AMI Meter Replacement Project

Close-Out Change Order

Description	Quantity	Unit Price	Net Amount
MDMS Head End Server Software	1.00	100,469.80	100,469.80
Customer Portal Annual Cost	1.00	14,292.00	14,292.00
Customer Portal Annual Cost	1.00	28,134.00	28,134.00
Customer Portal Annual Cost	1.00	41,976.00	41,976.00
Customer Portal Annual Cost	1.00	55,778.40	55,778.40
Not to Exceed Materials, Supplies and Labor	1,038,441.92	1.00	1,038,441.92
Returned Meters	278,010.00	1.00	278,010.00
			<b>\$ 1,557,102.12</b>



# *Brunswick-Glynn*

## *Joint Water and Sewer Commission*

# *Memorandum*

---

**To:** Brunswick-Glynn Joint Water & Sewer Commission  
**From:** Todd Kline, P.E., Director of Engineering  
**Date:** Thursday, December 21, 2023  
**Re:** JWSC Design & Construction Standards; 2024 Revision.

---

### **Background**

The purpose of the Brunswick Glynn Joint Water & Sewer Commission (JWSC) Standards for Water & Wastewater System Design and Construction (Standards) is to define the minimum requirements for the design and construction of public and private potable water and sanitary wastewater collection system infrastructure within Glynn County. These Standards are based upon federal, State, and local regulatory requirements, the recommendations of industry organizations and compatibility with the mission of the JWSC. The Standards are a foundational component of managing the trust that the public has in the JWSC to manage safe and effective improvements to the public water and wastewater system.

The JWSC Standards are assembled with an emphasis on meeting or exceeding minimum regulatory requirements, utilizing the best available technology and materials for construction, promoting longevity of the public system and standardizing for the best operational efficiency. An effective standard must meet the goals of the Utility, but its application must also be understandable and feasible by the end user. The goal of the JWSC is to safely and effectively serve the water and wastewater needs of Glynn County. The JWSC Standards document is the primary reference in bringing new growth and improvement of the public system to reality.

The current JWSC Standards document was last revised in 2012. A draft revision was created through the efforts of the Planning & Construction Division, all Operational divisions, as well as an outside engineering consultant. This draft was presented to the JWSC Board of Commissioners on April 20th. Commissioner feedback was reviewed and incorporated into the draft. This draft was then provided to a representative group of stakeholders including regional developers, builders, contractors, engineers, and regulators. The stakeholders were then invited to attend an open forum presentation on December 05<sup>th</sup>. Subsequent feedback was received, reviewed, and incorporated.

### **Staff Report**

The resulting draft is a product of the efforts of all levels of JWSC staff, JWSC Leadership and stakeholders. A great level of importance was placed on the incorporation of Operational feedback. This allows Operational staff to maintain confidence in the Planning & Construction review and approval of public system improvements that they would be charged with maintaining in perpetuity.

Actual clarifications and changes to standards and details were more general. Effort was made to simplify the text and eliminate former contradictions between sections. The most notable difference in the proposed revision is in the document format, specifically the Technical Specifications section. The intent is to standardize these not only for private development activity use, but also for JWSC Capital projects.

If approved by the JWSC Board of Commissioners, this revision draft will then be submitted to the Georgia Environmental Protection Division (EPD) for review. Once approved by EPD, the updated JWSC Standards may then be placed into use.

**Recommended Action**

JWSC Staff recognizes the importance of maintaining effective Standards for improvements to the public water and wastewater system and recommends upon GA EPD approval that this document formally become the current revision of the JWSC Standards.

**Recommended Motion**

*“I move that the Brunswick-Glynn Joint Water and Sewer Commission, upon GA EPD approval, approve this document as the JWSC Standards for Water & Wastewater System Design and Construction, to supersede all previous Standards versions.”*

**Enclosures**

Standards for Water & Wastewater System Design and Construction; January 2024 rev. (Please see JWSC website)





# ***Brunswick-Glynn***

## ***Joint Water and Sewer Commission***

# ***Memorandum***

---

**To:** Brunswick-Glynn Joint Water & Sewer Commission  
**From:** Todd Kline, P.E., Director of Engineering  
**Date:** Thursday, December 21, 2023  
**Re:** Infrastructure Dedication – Walker Point Subdivision Phase 2

---

### **Background**

The Brunswick-Glynn Joint Water & Sewer Commission (JWSC) Standards for Water & Sewer Design and Development Procedures support the acceptance of privately constructed water and wastewater systems as public infrastructure, when specified conditions are met. Walker Point LLC, the Developer of Walker Point Phase 2, wishes to dedicate infrastructure.

### **Staff Report**

Walker Point LLC has submitted legal documents to define and execute the transfer of ownership of water and sanitary sewer infrastructure. The infrastructure is understood to have complied with applicable standards at the time of construction. JWSC inspection records indicate the infrastructure was constructed to JWSC Standards, is functioning and is in acceptable condition.

### **Recommended Action**

All requirements of the JWSC Standards for Water & Sewer Design and Construction and Development Procedures have been met, and all related documents submitted. Staff recommends acceptance and approval of the conveyance of easements and dedications of infrastructure and described herein.

### **Recommended Motion**

***“I move that the Brunswick-Glynn Joint Water and Sewer Commission approve and accept this project with the associated Dedication of Infrastructure.”***

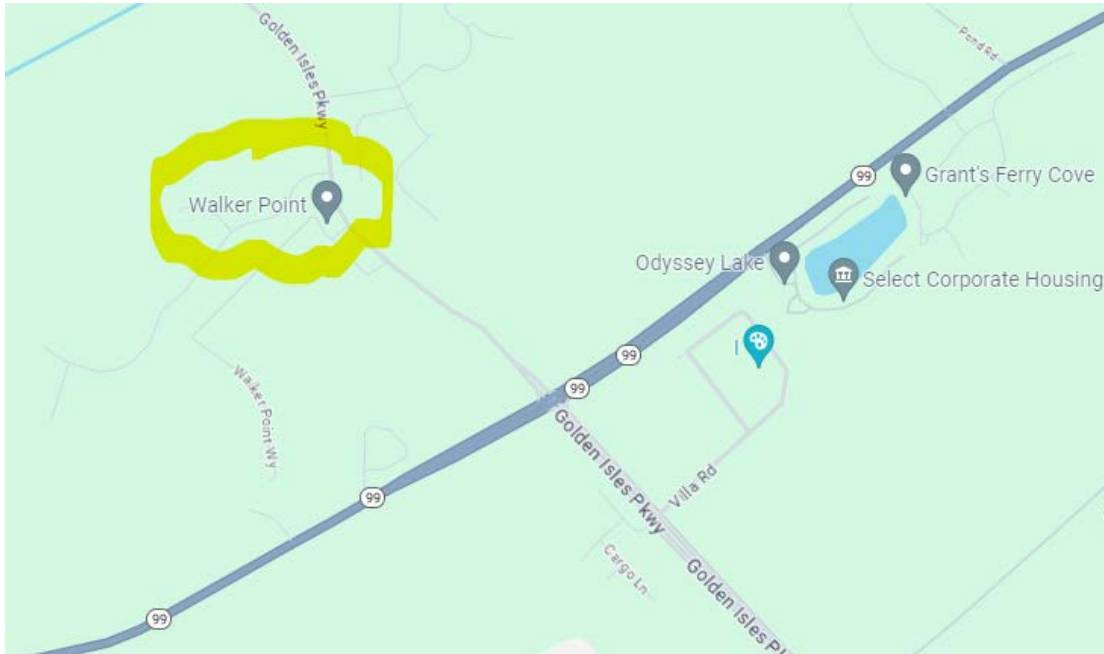
### **Enclosures**

1. Walker Point Phase 2 Record Drawings
2. Walker Point Phase 2 Application for Dedication of Infrastructure – Signature Required

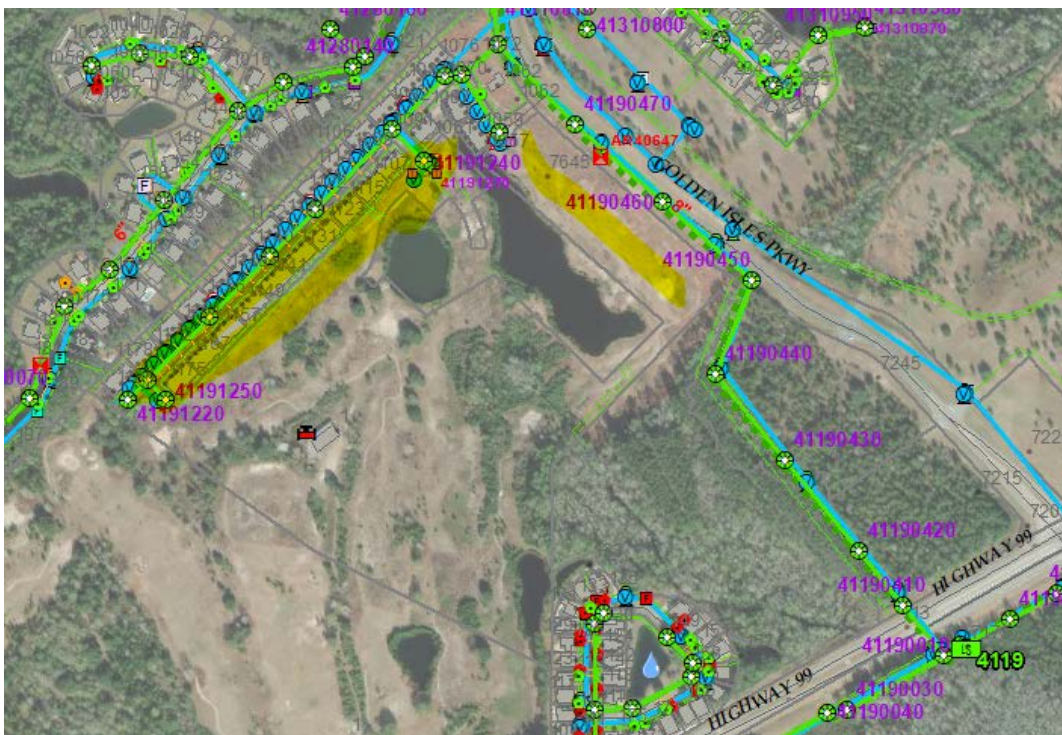
## WALKER POINT PHASE 2 – DEDICATION OF INFRASTRUCTURE

Owner of Record	Walker Point LLC (Wayne Moxley)
Legal Documents under Consideration	Application for Dedication of Infrastructure
Supporting Documents	Final Record Drawings
# of New Connections	132

### Location Map – 1 Coastal Pines Circle, Brunswick GA



### GIS Map – To be Updated following Acceptance of Infrastructure





# RECORD DRAWING, SEWER SYSTEM (PUBLIC)

(03-27748)

LAKE  
COMMON  
AREA

SEE SHEET 2 OF 3

GOLDEN ISLES PARKWAY (150' R/W)

WALKER POINT WAY (50' PUBLIC R/W)

BIRDIE BOULEVARD  
(50' PUBLIC R/W)

COMMON AREA

NOW OR FORMERLY  
FLEMINGTON FOREST  
PROPERTIES, LLC  
(DEED BOOK 4530, PAGE 346)  
(ZONED PD)

NOTE:  
\*\*SEE SHEET 2 FOR COORDINATE INFORMATION\*\*

BENCHMARKS		
POINT NUMBER	DESCRIPTION	ELEVATION
Δ 3575	NAIL & WASHER	24.89' (NAVD-88)
Δ 3577	NAIL & WASHER	29.16' (NAVD-88)
Δ 2249	NAIL & WASHER	27.46' (NAVD-88)
Δ 5265	NAIL & WASHER	25.21' (NAVD-88)

- NOTES:
- BOUNDARY INFORMATION SHOWN ON THIS SURVEY WAS TAKEN FROM THE FINAL PLAT FOR WALKER POINT, PHASE 2.
  - FIELD EQUIPMENT USED FOR THIS PLAT: GEOMAX ZOOM 90.
  - THIS SURVEY IS BASED ON FIELD WORK COMPLETED ON 10/18/23. SHUPE SURVEYING COMPANY, P.C. IS NOT RESPONSIBLE FOR ANY CHANGES TO THE SITE AFTER THIS DATE.
  - THE VERTICAL DATUM FOR THIS SURVEY IS BASED ON NAVD88 AND WAS ESTABLISHED USING RTK GPS WITH A VRS NETWORK (EGPS SOLUTIONS).
  - THE TAX PARCEL ID# IS: 03-27748.
  - OWNER/DEVELOPER

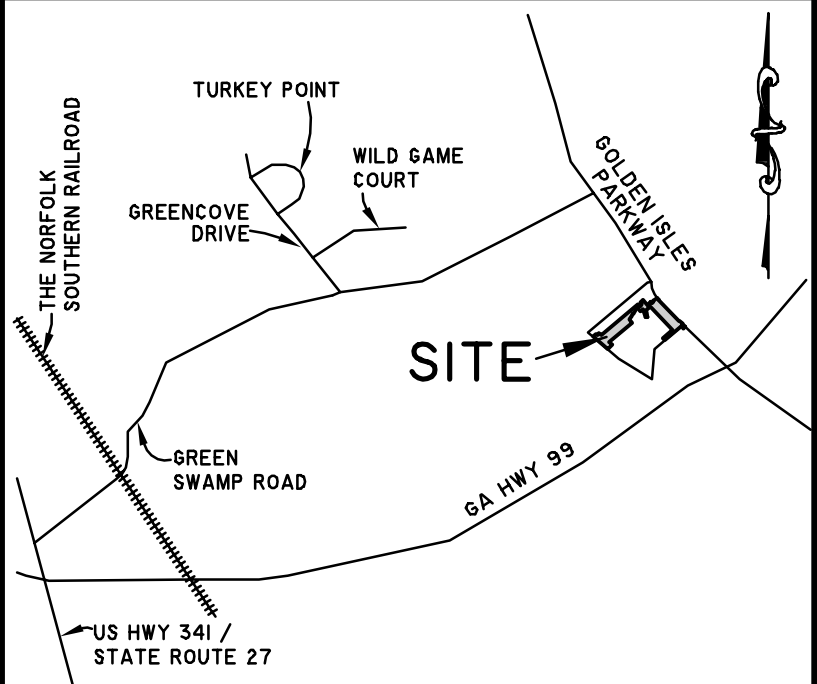
WALKER POINT, LLC  
324 S. FIFTH STREET  
JESUP, GEORGIA 31545  
(solidrockco@ellsouth.net)  
(912-588-1968)

**SURVEYOR'S STATEMENT:**  
TO THE BEST OF MY KNOWLEDGE AND BELIEF THE WATER AND/OR SEWER RECORD DRAWINGS SHOWN HEREON HAVE BEEN PREPARED IN CONFORMANCE WITH THE JWSC RECORD DRAWING STANDARDS AND ARE AN ACCURATE REPRESENTATION OF THE FIELD CONDITIONS BASED UPON ABOVE GROUND VISIBLE EVIDENCE OF SYSTEM COMPONENTS, AND THE ENGINEERING, CONTRACTOR AND JWSC INFORMATION PROVIDED.  
SURVEYOR'S NAME: \_\_\_\_\_  
SURVEYOR'S SIGNATURE: \_\_\_\_\_  
SURVEYOR'S GA REGISTERED LAND SURVEYOR NUMBER: 2401  
DATE SIGNED: \_\_\_\_\_

**ENGINEER'S STATEMENT:**  
THESE RECORD DRAWINGS HAVE BEEN PREPARED BASED ON CONSTRUCTION, LOCATION, ELEVATION AND TESTING INFORMATION PROVIDED BY THE CONTRACTOR, SURVEYOR AND THE JWSC. THIS INFORMATION HAS BEEN REVIEWED BY THE ENGINEER OF RECORD, AS CITED BELOW, AND TO THE BEST OF HIS/HER KNOWLEDGE AND BELIEF THESE RECORD DRAWINGS ARE CONSISTENT WITH THE DESIGN INTENT OF THE APPROVED SITE DEVELOPMENT PLANS AND ANY APPROVED MODIFICATIONS OR CHANGES.  
ENGINEER'S NAME: \_\_\_\_\_  
ENGINEER'S SIGNATURE: \_\_\_\_\_  
GA PROFESSIONAL ENGINEER REGISTRATION NUMBER: \_\_\_\_\_  
DATE SIGNED: \_\_\_\_\_

**CONTRACTOR'S STATEMENT:**  
THE WATER AND/OR SEWER SYSTEMS, AS SHOWN ON THESE RECORD DRAWINGS, HAVE BEEN CONSTRUCTED IN SUBSTANTIAL COMPLIANCE WITH THE STANDARDS AND SPECIFICATIONS FOR THIS PROJECT AND IN CONSIDERATION OF THE TWO (2) YEAR WORKMANSHIP AND MATERIALS WARRANTY. ANY SIGNIFICANT DEVIATIONS FROM THE MATERIALS SPECIFIED OR WORKMANSHIP STANDARDS REQUIRED HAVE BEEN APPROVED BY THE ENGINEER AND THE JWSC PRIOR TO INSTALLATION. THIS INFORMATION HAS BEEN REVIEWED BY A PRINCIPAL OF THE COMPANY OR AN EXECUTIVE OFFICER, AS CITED BELOW, AND TO THE BEST OF HIS/HER KNOWLEDGE AND BELIEF THESE RECORD DRAWINGS ARE ACCURATE AND COMPLETE.  
COMPANY NAME: \_\_\_\_\_  
PRINCIPAL/OFFICER'S NAME: \_\_\_\_\_  
PRINCIPAL/OFFICER'S SIGNATURE: \_\_\_\_\_  
DATE SIGNED: \_\_\_\_\_

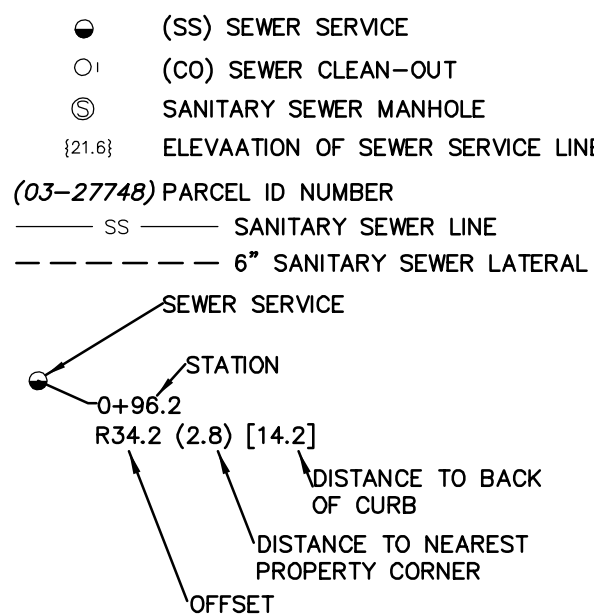
**JWSC'S STATEMENT:**  
THESE RECORD DRAWINGS HAVE BEEN PREPARED AND CONFIRMED BASED ON PERIODIC FIELD OBSERVATIONS DURING CONSTRUCTION, FIELD TESTING, CCTV AND PHYSICAL INSPECTIONS OF SYSTEM COMPONENTS BY JWSC STAFF. THIS INFORMATION HAS BEEN REVIEWED BY JWSC SUPERINTENDENTS AND CONSTRUCTION INSPECTION STAFF, AS CITED BELOW, AND TO THE BEST OF THEIR KNOWLEDGE AND BELIEF THESE RECORD DRAWINGS ARE ACCURATE AND COMPLETE IN ACCORDANCE WITH ADOPTED JWSC RECORD DRAWING STANDARDS AND SPECIFICATIONS.  
WATER DISTRIBUTION SUPERINTENDENT'S NAME: N/A  
WATER DISTRIBUTION SUPERINTENDENT'S SIGNATURE: N/A  
DATE SIGNED: \_\_\_\_\_  
WASTEWATER COLLECTION SUPERINTENDENT'S NAME: \_\_\_\_\_  
WASTEWATER COLLECTION SUPERINTENDENT'S SIGNATURE: \_\_\_\_\_  
DATE SIGNED: \_\_\_\_\_  
PROJECT INSPECTOR'S NAME: \_\_\_\_\_  
PROJECT INSPECTOR'S NAME SIGNATURE: \_\_\_\_\_  
DATE SIGNED: \_\_\_\_\_



VICINITY MAP (NOT TO SCALE)

THIS DOCUMENT AND ALL REPRODUCIBLE COPIES OF THIS DOCUMENT ARE THE PROPERTY OF SHUPE SURVEYING COMPANY, P.C. REPRODUCTION OF THIS DOCUMENT IS NOT PERMITTED WITHOUT WRITTEN CONSENT OF SHUPE SURVEYING COMPANY, P.C. UNLESS THIS DOCUMENT BECOMES A MATTER OF PUBLIC RECORD. ALTERATIONS TO THIS DOCUMENT ARE NOT PERMITTED.

SEWER SYSTEM LEGEND



GEORGIA PROFESSIONAL LAND SURVEYOR No. 2401 GARY R. NEVILL

GARY R. NEVILL, GA PLS #2401 (gnevill@shupesurvey.com)

3	REVISED PER COMMENTS	JCH	12/01/23
2	REVISED PER COMMENTS	JCH	11/28/23
1	REVISED PER COMMENTS	JCH	11/17/23
NO.	REVISION	BY	DATE

RECORD DRAWING, SEWER SYSTEM FOR:  
**WALKER POINT,  
PHASE 2**  
(A PORTION OF TRACT R-7,  
GOLDEN ISLES GATEWAY TRACT)  
1356TH G.M.D., GLYNN COUNTY, GEORGIA  
PREPARED FOR:  
SOLID ROCK HOLDINGS, LLC

SHUPE SURVEYING COMPANY, P.C.  
3837 DARIEN HIGHWAY  
BRUNSWICK, GA 31525  
912-265-0562  
CERTIFICATE OF AUTHORIZATION: LSF317

40' 0 20' 40' 80'

SCALE 1" = 40' DRAWING DATE 11/02/2023  
FILE 21326E DRAWN BY JCH  
DRAWING 21326E-3.DWG CREW CHIEF MH  
SHEET 1 OF 3

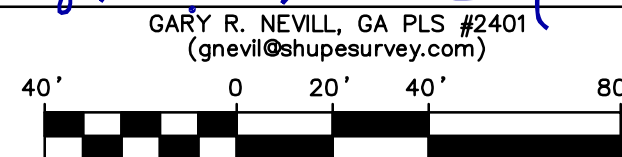
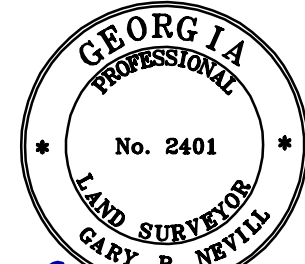


# RECORD SEWER (PUBLIC) DRAWING, SYSTEM

3	REVISED PER COMMENTS	JCH	12/01/23
2	REVISED PER COMMENTS	JCH	11/28/23
1	REVISED PER COMMENTS	JCH	11/17/23
NO.	REVISION	BY	DATE

## SEWER SYSTEM LEGEND

- (SS) SEWER SERVICE
- (CO) SEWER CLEAN-OUT
- (SMH) SANITARY SEWER MANHOLE
- (E) ELEVATION OF SEWER SERVICE LINE
- (03-27748) PARCEL ID NUMBER
- SS SANITARY SEWER LINE
- 6" SANITARY SEWER LATERAL
- SEWER SERVICE
- STATION
- 0+96.2
- R34.2 (2.8) [14.2]
- DISTANCE TO BACK OF CURB
- DISTANCE TO NEAREST PROPERTY CORNER
- OFFSET



## SURVEYOR'S STATEMENT:

TO THE BEST OF MY KNOWLEDGE AND BELIEF THE WATER AND/OR SEWER RECORD DRAWINGS SHOWN HEREON HAVE BEEN PREPARED IN CONFORMANCE WITH THE JWSC RECORD DRAWING STANDARDS AND ARE AN ACCURATE REPRESENTATION OF THE FIELD CONDITIONS BASED UPON ABOVE GROUND VISIBLE EVIDENCE OF SYSTEM COMPONENTS, AND THE ENGINEERING, CONTRACTOR AND JWSC INFORMATION PROVIDED.

SURVEYOR'S NAME: \_\_\_\_\_

SURVEYOR'S SIGNATURE: \_\_\_\_\_

SURVEYOR'S GA REGISTERED LAND SURVEYOR NUMBER: 2401

DATE SIGNED: \_\_\_\_\_

## ENGINEER'S STATEMENT:

THESE RECORD DRAWINGS HAVE BEEN PREPARED BASED ON CONSTRUCTION, LOCATION, ELEVATION AND TESTING INFORMATION PROVIDED BY THE CONTRACTOR, SURVEYOR AND THE JWSC. THIS INFORMATION HAS BEEN REVIEWED BY THE ENGINEER OF RECORD, AS CITED BELOW, AND TO THE BEST OF HIS/HER KNOWLEDGE AND BELIEF THESE RECORD DRAWINGS ARE CONSISTENT WITH THE DESIGN INTENT OF THE APPROVED SITE DEVELOPMENT PLANS AND ANY APPROVED MODIFICATIONS OR CHANGES.

ENGINEER'S NAME: \_\_\_\_\_

ENGINEER'S SIGNATURE: \_\_\_\_\_

GA PROFESSIONAL ENGINEER REGISTRATION NUMBER: \_\_\_\_\_

DATE SIGNED: \_\_\_\_\_

## CONTRACTOR'S STATEMENT:

THE WATER AND/OR SEWER SYSTEMS, AS SHOWN ON THESE RECORD DRAWINGS, HAVE BEEN CONSTRUCTED IN SUBSTANTIAL COMPLIANCE WITH THE STANDARDS AND SPECIFICATIONS FOR THIS PROJECT AND IN CONSIDERATION OF THE TWO (2) YEAR WORKMANSHIP AND MATERIALS WARRANTY. ANY SIGNIFICANT DEVIATIONS FROM THE MATERIALS SPECIFIED OR WORKMANSHIP STANDARDS REQUIRED HAVE BEEN APPROVED BY THE ENGINEER AND THE JWSC PRIOR TO INSTALLATION. THIS INFORMATION HAS BEEN REVIEWED BY A PRINCIPAL OF THE COMPANY OR AN EXECUTIVE OFFICER, AS CITED BELOW, AND TO THE BEST OF HIS/HER KNOWLEDGE AND BELIEF THESE RECORD DRAWINGS ARE ACCURATE AND COMPLETE.

COMPANY NAME: \_\_\_\_\_

PRINCIPAL/OFFICER'S NAME: \_\_\_\_\_

PRINCIPAL/OFFICER'S SIGNATURE: \_\_\_\_\_

DATE SIGNED: \_\_\_\_\_

## JWSC'S STATEMENT:

THESE RECORD DRAWINGS HAVE BEEN PREPARED AND CONFIRMED BASED ON PERIODIC FIELD OBSERVATIONS DURING CONSTRUCTION, FIELD TESTING, CCTV AND PHYSICAL INSPECTIONS OF SYSTEM COMPONENTS BY JWSC STAFF. THIS INFORMATION HAS BEEN REVIEWED BY JWSC SUPERINTENDENTS AND CONSTRUCTION INSPECTION STAFF, AS CITED BELOW, AND TO THE BEST OF THEIR KNOWLEDGE AND BELIEF THESE RECORD DRAWINGS ARE ACCURATE AND COMPLETE IN ACCORDANCE WITH ADOPTED JWSC RECORD DRAWING STANDARDS AND SPECIFICATIONS.

WATER DISTRIBUTION SUPERINTENDENT'S NAME: N/A

WATER DISTRIBUTION SUPERINTENDENT'S SIGNATURE: N/A

DATE SIGNED: \_\_\_\_\_

WASTEWATER COLLECTION SUPERINTENDENT'S NAME: \_\_\_\_\_

WASTEWATER COLLECTION SUPERINTENDENT'S SIGNATURE: \_\_\_\_\_

DATE SIGNED: \_\_\_\_\_

PROJECT INSPECTOR'S NAME: \_\_\_\_\_

PROJECT INSPECTOR'S NAME SIGNATURE: \_\_\_\_\_

DATE SIGNED: \_\_\_\_\_

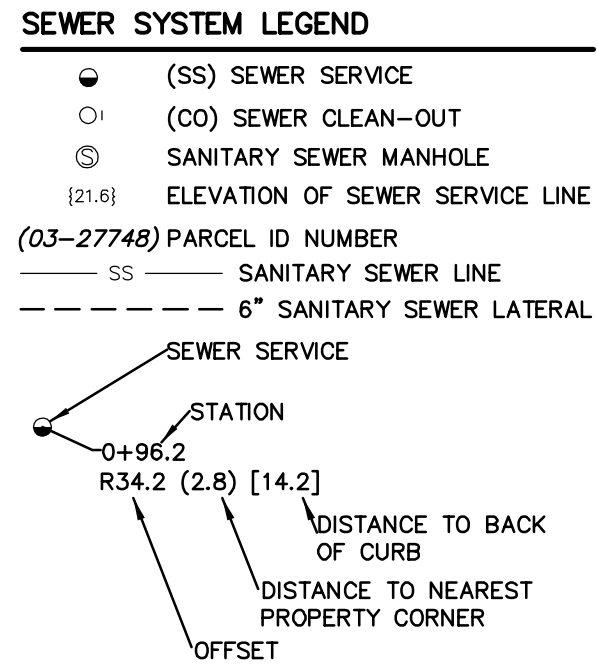
## SEWER STRUCTURE COORDINATES

GEORGIA COORDINATE SYSTEM, EAST ZONE - NAD 83

STRUC TURE	NORTHING	EASTING
SSMH-1	467155.17	858322.63
SSMH-2	467978.52	859216.02
SSMH-3	468076.00	859478.98
SSMH-4	466954.14	858605.17
SSMH-5	467365.28	858751.44
SSMH-6	467625.79	859005.27
SSMH-7	467755.46	859038.86
SSMH-8	467861.77	859102.70
SSMH-9	467853.54	859337.54
SSMH-10	467807.48	859775.47
SSMH-11	467522.90	860097.51
CO-57-58	467151.16	858279.85
CO-59-60	467123.75	858323.97
CO-61-62	467085.23	858377.71
CO-63-64	467055.83	858420.56
CO-65-66	467016.98	858474.86
CO-67-68	466988.35	858515.51
CO-69-70	466949.05	858570.74
CO-147-148	467129.46	858485.95
CP-149-150	467166.97	858522.12
CO-151-152	467214.42	858568.00
CO-153-154	467251.21	858604.37
CO-155-156	467298.02	858650.67
CO-157-158	467335.77	858687.32
CO-159-160	467382.62	858732.83
CO-161-162	467419.17	858768.64
CO-163-164	467466.86	858815.28
CO-165-166	467503.61	858851.35
CO-167-168	467551.05	858897.61
CO-169-170	467587.90	858933.96
CO-171-172	467635.27	858979.54
CO-173-174	467682.53	859025.12
CO-175-176	467620.53	858940.55
CO-177-178	467472.54	858993.73
CO-179-180	467436.55	858857.83
CO-181-182	467389.31	858811.90
CO-183-184	467351.73	858774.93
CO-185-186	467304.51	858729.22
CO-187-188	467266.84	858692.33
CO-189-190	467220.62	858647.15
CO-191-192	467183.36	858610.63
CO-193-194	467135.77	858564.40
CO-195-196	467099.07	858527.33
CO-362-363	467877.53	859276.98
CO-364-365	467914.26	859240.05
CO-366-367	467986.43	859298.43
CO-368-369	467946.73	859279.39
CO-370-371	467900.75	859324.44
CO-372-373	467862.09	859359.99
CO-374-375	467523.78	860057.47
CO-376-377	467558.42	860018.43
CO-378-379	467601.98	859969.19
CO-380-381	467636.91	859929.53
CO-382-383	467680.25	859880.60
CO-384-385	467714.52	859841.66
CO-386-387	467758.78	859791.55
CO-388-389	467794.42	859754.84
CO-390-391	467838.20	859705.00
CO-392-393	467872.84	859666.38
CO-394-395	467916.00	859616.36
CO-396-397	467956.67	859577.72
CO-398-399	467994.04	859528.28
CO-400-401	468028.06	859488.99
CO-409-410	468035.03	859550.53
CO-411-412	468000.22	859590.32
CO-413-414	467956.93	859640.03
CO-415-416	467922.02	859679.03
CO-417-418	467878.75	859728.03
CO-419-420	467844.24	859766.88
CO-421-422	467800.52	859817.14
CO-423-424	467765.85	859856.46
CO-425-426	467722.90	859905.53
CO-427-428	467688.53	859944.44
CO-429-430	467644.60	859994.11
CO-431-432	467610.43	860032.49
CO-433-434	467566.44	860082.55
SS-57	467152.50	858279.03
SS-58	467149.61	858281.33
SS-59	467122.68	858320.98
SS-60	467120.74	858324.04
SS-61	467084.84	858375.05
SS-62	467082.51	858378.66
SS-63	467054.54	858417.33
SS-64	467052.82	858420.33
SS-65	467016.73	858471.11
SS-66	467013.91	858474.33
SS-67	466986.79	858512.55
SS-68	466985.48	858516.11
SS-69	466948.27	858566.77
SS-70	466946.18	858570.74
SS-71	466920.71	858609.09
SS-147	467129.65	858482.62
SS-148	467132.27	858484.93
SS-149	467162.82	858519.18
SS-150	467170.03	858521.11
SS-151	467214.82	858564.99
SS-152	467217.62	858567.63
SS-153	467251.63	858601.66
SS-154	467254.21	858603.83
SS-155	467298.44	858647.22
SS-156	467301.82	858649.77
SS-157	467336.39	858683.37
SS-158	467338.65	858686.55
SS-159	467383.56	858730.36



Y:\Project Files\21326A.DWG\PHASE 2-FINAL PLAT\RECORD DRAWINGS PHASE 2\21326E 3.dwg, 12/17/2023 6:50:31 AM



# RECORD DRAWING, SEWER SYSTEM (PUBLIC)

**SURVEYOR'S STATEMENT:**

TO THE BEST OF MY KNOWLEDGE AND BELIEF THE WATER AND/OR SEWER RECORD DRAWINGS SHOWN HEREON HAVE BEEN PREPARED IN CONFORMANCE WITH THE JWSC RECORD DRAWING STANDARDS AND ARE AN ACCURATE REPRESENTATION OF THE FIELD CONDITIONS BASED UPON ABOVE GROUND VISIBLE EVIDENCE OF SYSTEM COMPONENTS, AND THE ENGINEERING, CONTRACTOR AND JWSC INFORMATION PROVIDED.

SURVEYOR'S NAME: \_\_\_\_\_

SURVEYOR'S SIGNATURE: \_\_\_\_\_

SURVEYOR'S GA REGISTERED LAND SURVEYOR NUMBER: 2401

DATE SIGNED: \_\_\_\_\_

**ENGINEER'S STATEMENT:**

THESE RECORD DRAWINGS HAVE BEEN PREPARED BASED ON CONSTRUCTION, LOCATION, ELEVATION AND TESTING INFORMATION PROVIDED BY THE CONTRACTOR, SURVEYOR AND THE JWSC. THIS INFORMATION HAS BEEN REVIEWED BY THE ENGINEER OF RECORD, AS CITED BELOW, AND TO THE BEST OF HIS/HER KNOWLEDGE AND BELIEF THESE RECORD DRAWINGS ARE CONSISTENT WITH THE DESIGN INTENT OF THE APPROVED SITE DEVELOPMENT PLANS AND ANY APPROVED MODIFICATIONS OR CHANGES.

ENGINEER'S NAME: \_\_\_\_\_

ENGINEER'S SIGNATURE: \_\_\_\_\_

GA PROFESSIONAL ENGINEER REGISTRATION NUMBER: \_\_\_\_\_

DATE SIGNED: \_\_\_\_\_

**CONTRACTOR'S STATEMENT:**

THE WATER AND/OR SEWER SYSTEMS, AS SHOWN ON THESE RECORD DRAWINGS, HAVE BEEN CONSTRUCTED IN SUBSTANTIAL COMPLIANCE WITH THE STANDARDS AND SPECIFICATIONS FOR THIS PROJECT AND IN CONSIDERATION OF THE TWO (2) YEAR WORKMANSHIP AND MATERIALS WARRANTY. ANY SIGNIFICANT DEVIATIONS FROM THE MATERIALS SPECIFIED OR WORKMANSHIP STANDARDS REQUIRED HAVE BEEN APPROVED BY THE ENGINEER AND THE JWSC PRIOR TO INSTALLATION. THIS INFORMATION HAS BEEN REVIEWED BY A PRINCIPAL OF THE COMPANY OR AN EXECUTIVE OFFICER, AS CITED BELOW, AND TO THE BEST OF HIS/HER KNOWLEDGE AND BELIEF THESE RECORD DRAWINGS ARE ACCURATE AND COMPLETE.

COMPANY NAME: \_\_\_\_\_

PRINCIPAL/OFFICER'S NAME: \_\_\_\_\_

PRINCIPAL/OFFICER'S SIGNATURE: \_\_\_\_\_

DATE SIGNED: \_\_\_\_\_

**JWSC'S STATEMENT:**

THESE RECORD DRAWINGS HAVE BEEN PREPARED AND CONFIRMED BASED ON PERIODIC FIELD OBSERVATIONS DURING CONSTRUCTION, FIELD TESTING, CCTV AND PHYSICAL INSPECTIONS OF SYSTEM COMPONENTS BY JWSC STAFF. THIS INFORMATION HAS BEEN REVIEWED BY JWSC SUPERINTENDENTS AND CONSTRUCTION INSPECTION STAFF, AS CITED BELOW, AND TO THE BEST OF THEIR KNOWLEDGE AND BELIEF THESE RECORD DRAWINGS ARE ACCURATE AND COMPLETE IN ACCORDANCE WITH ADOPTED JWSC RECORD DRAWING STANDARDS AND SPECIFICATIONS.

WATER DISTRIBUTION SUPERINTENDENT'S NAME: N/A

WATER DISTRIBUTION SUPERINTENDENT'S SIGNATURE: N/A

DATE SIGNED: \_\_\_\_\_

WASTEWATER COLLECTION SUPERINTENDENT'S NAME: \_\_\_\_\_

WASTEWATER COLLECTION SUPERINTENDENT'S SIGNATURE: \_\_\_\_\_

DATE SIGNED: \_\_\_\_\_

PROJECT INSPECTOR'S NAME: \_\_\_\_\_

PROJECT INSPECTOR'S NAME SIGNATURE: \_\_\_\_\_

DATE SIGNED: \_\_\_\_\_

**GEORGIA PROFESSIONAL LAND SURVEYOR**  
No. 2401  
GARY R. NEVILL

*GARY R. NEVILL*

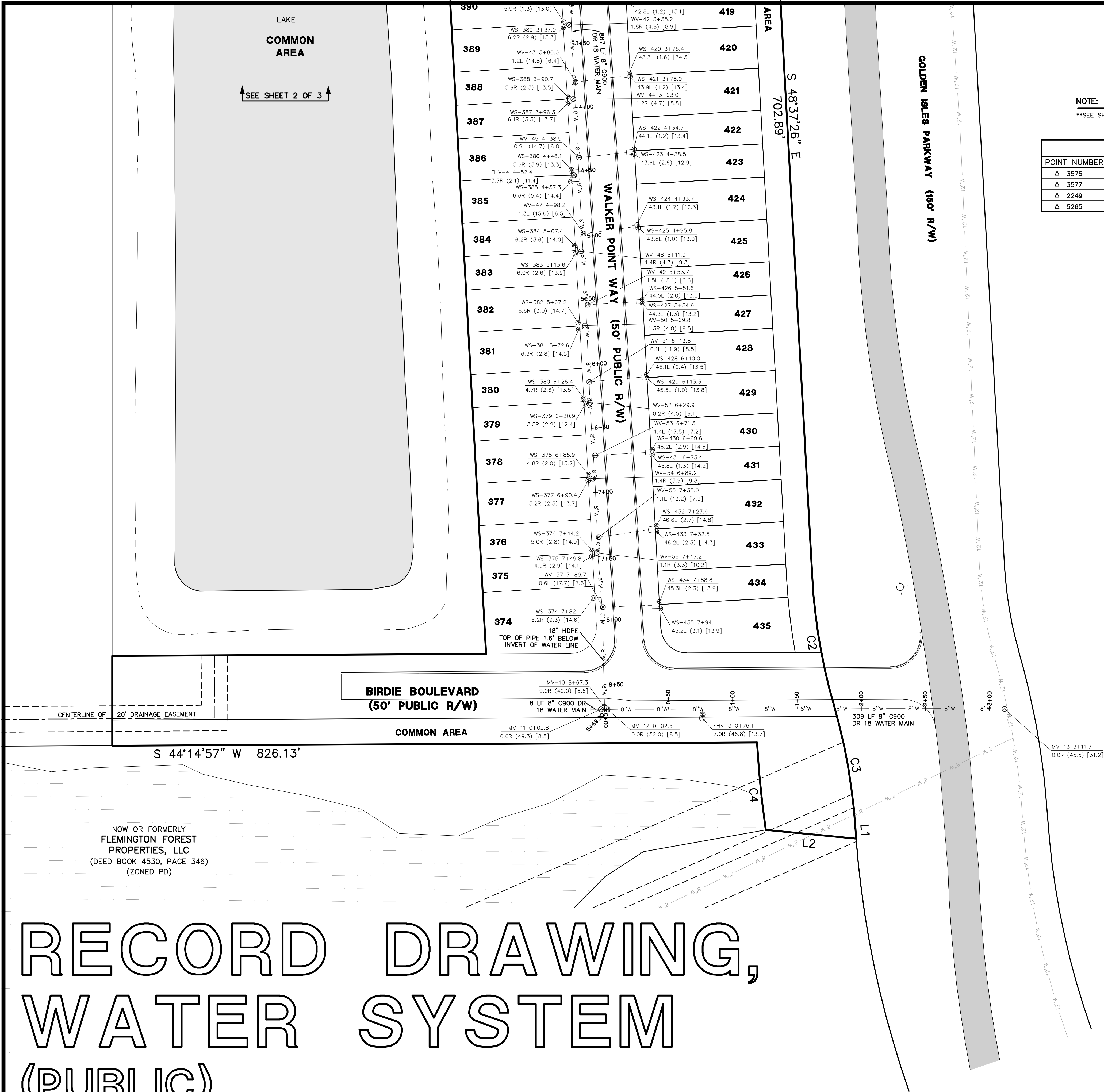
GARY R. NEVILL, GA PLS #2401  
(gnevil@shupesurvey.com)

40' 0 20' 40' 80'

3	REVISED PER COMMENTS	JCH	12/01/23
2	REVISED PER COMMENTS	JCH	11/28/23
1	REVISED PER COMMENTS	JCH	11/17/23
NO.	REVISION	BY	DATE



# RECORD DRAWING, WATER SYSTEM (PUBLIC)



NOTE:  
\*\*SEE SHEET 2 FOR COORDINATE INFORMATION\*\*

BENCHMARKS		
POINT NUMBER	DESCRIPTION	ELEVATION
Δ 3575	NAIL & WASHER	24.69' (NAVD--88)
Δ 3577	NAIL & WASHER	29.16' (NAVD--88)
Δ 2249	NAIL & WASHER	27.46' (NAVD--88)
Δ 5265	NAIL & WASHER	25.21' (NAVD--88)

- NOTES:
- BOUNDARY INFORMATION SHOWN ON THIS SURVEY WAS TAKEN FROM THE FINAL PLAT FOR WALKER POINT, PHASE 2.
  - FIELD EQUIPMENT USED FOR THIS PLAT: GEOMAX ZOOM 90.
  - THIS SURVEY IS BASED ON FIELD WORK COMPLETED ON 10/20/23. SHUPE SURVEYING COMPANY, P.C. IS NOT RESPONSIBLE FOR ANY CHANGES TO THE SITE AFTER THIS DATE.
  - THE VERTICAL DATUM FOR THIS SURVEY IS BASED ON NAVD88 AND WAS ESTABLISHED USING RTK GPS WITH A VRS NETWORK (EGPS SOLUTIONS).
  - THE TAX PARCEL ID# IS: 03-27748.
  - OWNER/DEVELOPER
  - WALKER POINT, LLC  
324 S. FIFTH STREET  
JESUP, GEORGIA 31545  
(solidrockco@ellsouth.net)  
(912-588-1968)
  - WATER MAIN HAS 5' DEPTH TO AVOID CONFLICT WITH SEWER LATERALS (TYPICAL).

**SURVEYOR'S STATEMENT:**

TO THE BEST OF MY KNOWLEDGE AND BELIEF THE WATER AND/OR SEWER RECORD DRAWINGS SHOWN HEREON HAVE BEEN PREPARED IN CONFORMANCE WITH THE JWSC RECORD DRAWING STANDARDS AND ARE AN ACCURATE REPRESENTATION OF THE FIELD CONDITIONS BASED UPON ABOVE GROUND VISIBLE EVIDENCE OF SYSTEM COMPONENTS, AND THE ENGINEERING, CONTRACTOR AND JWSC INFORMATION PROVIDED.

SURVEYOR'S NAME: \_\_\_\_\_

SURVEYOR'S SIGNATURE: \_\_\_\_\_

SURVEYOR'S GA REGISTERED LAND SURVEYOR NUMBER: 2401

DATE SIGNED: \_\_\_\_\_

**ENGINEER'S STATEMENT:**

THESE RECORD DRAWINGS HAVE BEEN PREPARED BASED ON CONSTRUCTION, LOCATION, ELEVATION AND TESTING INFORMATION PROVIDED BY THE CONTRACTOR, SURVEYOR AND THE JWSC. THIS INFORMATION HAS BEEN REVIEWED BY THE ENGINEER OF RECORD, AS CITED BELOW, AND TO THE BEST OF HIS/HER KNOWLEDGE AND BELIEF THESE RECORD DRAWINGS ARE CONSISTENT WITH THE DESIGN INTENT OF THE APPROVED SITE DEVELOPMENT PLANS AND ANY APPROVED MODIFICATIONS OR CHANGES.

ENGINEER'S NAME: \_\_\_\_\_

ENGINEER'S SIGNATURE: \_\_\_\_\_

GA PROFESSIONAL ENGINEER REGISTRATION NUMBER: \_\_\_\_\_

DATE SIGNED: \_\_\_\_\_

**CONTRACTOR'S STATEMENT:**

THE WATER AND/OR SEWER SYSTEMS, AS SHOWN ON THESE RECORD DRAWINGS, HAVE BEEN CONSTRUCTED IN SUBSTANTIAL COMPLIANCE WITH THE STANDARDS AND SPECIFICATIONS FOR THIS PROJECT AND IN CONSIDERATION OF THE TWO (2) YEAR WORKMANSHIP AND MATERIALS WARRANTY. ANY SIGNIFICANT DEVIATIONS FROM THE MATERIALS SPECIFIED OR WORKMANSHIP STANDARDS REQUIRED HAVE BEEN APPROVED BY THE ENGINEER AND THE JWSC PRIOR TO INSTALLATION. THIS INFORMATION HAS BEEN REVIEWED BY A PRINCIPAL OF THE COMPANY OR AN EXECUTIVE OFFICER, AS CITED BELOW, AND TO THE BEST OF HIS/HER KNOWLEDGE AND BELIEF THESE RECORD DRAWINGS ARE ACCURATE AND COMPLETE.

COMPANY NAME: \_\_\_\_\_

PRINCIPAL/OFFICER'S NAME: \_\_\_\_\_

PRINCIPAL/OFFICER'S SIGNATURE: \_\_\_\_\_

DATE SIGNED: \_\_\_\_\_

**JWSC'S STATEMENT:**

THESE RECORD DRAWINGS HAVE BEEN PREPARED AND CONFIRMED BASED ON PERIODIC FIELD OBSERVATIONS DURING CONSTRUCTION, FIELD TESTING, CCTV AND PHYSICAL INSPECTIONS OF SYSTEM COMPONENTS BY JWSC STAFF. THIS INFORMATION HAS BEEN REVIEWED BY JWSC SUPERINTENDENTS AND CONSTRUCTION INSPECTION STAFF, AS CITED BELOW, AND TO THE BEST OF THEIR KNOWLEDGE AND BELIEF THESE RECORD DRAWINGS ARE ACCURATE AND COMPLETE IN ACCORDANCE WITH ADOPTED JWSC RECORD DRAWING STANDARDS AND SPECIFICATIONS.

WATER DISTRIBUTION SUPERINTENDENT'S NAME: N/A

WATER DISTRIBUTION SUPERINTENDENT'S SIGNATURE: N/A

DATE SIGNED: \_\_\_\_\_

WASTEWATER COLLECTION SUPERINTENDENT'S NAME: \_\_\_\_\_

WASTEWATER COLLECTION SUPERINTENDENT'S SIGNATURE: \_\_\_\_\_

DATE SIGNED: \_\_\_\_\_

PROJECT INSPECTOR'S NAME: \_\_\_\_\_

PROJECT INSPECTOR'S NAME SIGNATURE: \_\_\_\_\_

DATE SIGNED: \_\_\_\_\_

TURKEY POINT  
GREENCOVE DRIVE  
GREEN SWAMP ROAD  
US HWY 341 / STATE ROUTE 27  
GOLDEN ISLES PARKWAY  
SITE

VICINITY MAP (NOT TO SCALE)

THIS DOCUMENT AND ALL REPRODUCIBLE COPIES OF THIS DOCUMENT ARE THE PROPERTY OF SHUPE SURVEYING COMPANY, P.C. REPRODUCTION OF THIS DOCUMENT IS NOT PERMITTED WITHOUT WRITTEN CONSENT OF SHUPE SURVEYING COMPANY, P.C. UNLESS THIS DOCUMENT BECOMES A MATTER OF PUBLIC RECORD. ALTERATIONS TO THIS DOCUMENT ARE NOT PERMITTED.

**WATER SYSTEM LEGEND**

⊙ (WS) WATER SERVICE  
⊙ (WV) WATER VALVE  
⊙ (MV) MAIN VALVE  
⊙ (FHV) FIRE HYDRANT VALVE  
(03-08618) PARCEL ID NUMBER  
8" W 8" C900 DR 18 WATER LINE  
W EXISTING WATER MAIN  
--- 1" WATER LATERAL SERVICE LINE

WATER SERVICE  
STATION  
O+96.2  
R34.2 (2.8) [14.2]  
DISTANCE TO BACK OF CURB  
DISTANCE TO NEAREST PROPERTY CORNER  
OFFSET

GEORGIA PROFESSIONAL LAND SURVEYOR  
No. 2401  
GARY R. NEVILL  
GARY R. NEVILL, GA PLS #2401  
(gnevill@shupesurvey.com)

3	REVISED PER COMMENTS	JCH	12/01/23
2	REVISED PER COMMENTS	JCH	11/28/23
1	REVISED PER COMMENTS	JCH	11/17/23
NO.	REVISION	BY	DATE

RECORD DRAWING, WATER SYSTEM FOR:  
**WALKER POINT, PHASE 2**  
(A PORTION OF TRACT R-7, GOLDEN ISLES GATEWAY TRACT)  
1356TH G.M.D., GLYNN COUNTY, GEORGIA

PREPARED FOR:  
**SOLID ROCK HOLDINGS, LLC**

SHUPE SURVEYING COMPANY, P.C.  
3837 DARIEN HIGHWAY  
BRUNSWICK, GA 31525  
912-265-0562  
CERTIFICATE OF AUTHORIZATION: LSF317

40' 0 20' 40' 80'

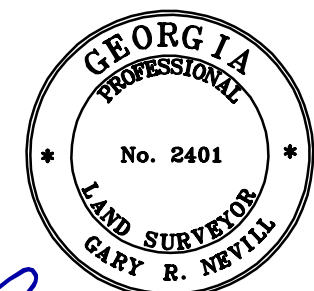
SCALE 1" = 40'  
FILE 21326E  
DRAWING 21326E-3.DWG  
DRAWN BY JCH  
CREW CHIEF MH

SHEET 1 OF 3



# RECORD WATER SYSTEM (PUBLIC)

3	REVISED PER COMMENTS	JCH	12/01/23
2	REVISED PER COMMENTS	JCH	11/28/23
1	REVISED PER COMMENTS	JCH	11/17/23
NO.	REVISION	BY	DATE



GARY R. NEVILL, GA PLS #2401  
(gnevill@shupesurvey.com)



#### SURVEYOR'S STATEMENT:

TO THE BEST OF MY KNOWLEDGE AND BELIEF THE WATER AND/OR SEWER RECORD DRAWINGS SHOWN HEREON HAVE BEEN PREPARED IN CONFORMANCE WITH THE JWSC RECORD DRAWING STANDARDS AND ARE AN ACCURATE REPRESENTATION OF THE FIELD CONDITIONS BASED UPON ABOVE GROUND VISIBLE EVIDENCE OF SYSTEM COMPONENTS, AND THE ENGINEERING, CONTRACTOR AND JWSC INFORMATION PROVIDED.

SURVEYOR'S NAME: \_\_\_\_\_

SURVEYOR'S SIGNATURE: \_\_\_\_\_

SURVEYOR'S GA REGISTERED LAND SURVEYOR NUMBER: 2401

DATE SIGNED: \_\_\_\_\_

#### ENGINEER'S STATEMENT:

THESE RECORD DRAWINGS HAVE BEEN PREPARED BASED ON CONSTRUCTION, LOCATION, ELEVATION AND TESTING INFORMATION PROVIDED BY THE CONTRACTOR, SURVEYOR AND THE JWSC. THIS INFORMATION HAS BEEN REVIEWED BY THE ENGINEER OF RECORD, AS CITED BELOW, AND TO THE BEST OF HIS/HER KNOWLEDGE AND BELIEF THESE RECORD DRAWINGS ARE CONSISTENT WITH THE DESIGN INTENT OF THE APPROVED SITE DEVELOPMENT PLANS AND ANY APPROVED MODIFICATIONS OR CHANGES.

ENGINEER'S NAME: \_\_\_\_\_

ENGINEER'S SIGNATURE: \_\_\_\_\_

GA PROFESSIONAL ENGINEER REGISTRATION NUMBER: \_\_\_\_\_

DATE SIGNED: \_\_\_\_\_

#### CONTRACTOR'S STATEMENT:

THE WATER AND/OR SEWER SYSTEMS, AS SHOWN ON THESE RECORD DRAWINGS, HAVE BEEN CONSTRUCTED IN SUBSTANTIAL COMPLIANCE WITH THE STANDARDS AND SPECIFICATIONS FOR THIS PROJECT AND IN CONSIDERATION OF THE TWO (2) YEAR WORKMANSHIP AND MATERIALS WARRANTY. ANY SIGNIFICANT DEVIATIONS FROM THE MATERIALS SPECIFIED OR WORKMANSHIP STANDARDS REQUIRED HAVE BEEN APPROVED BY THE ENGINEER AND THE JWSC PRIOR TO INSTALLATION. THIS INFORMATION HAS BEEN REVIEWED BY A PRINCIPAL OF THE COMPANY OR AN EXECUTIVE OFFICER, AS CITED BELOW, AND TO THE BEST OF HIS/HER KNOWLEDGE AND BELIEF THESE RECORD DRAWINGS ARE ACCURATE AND COMPLETE.

COMPANY NAME: \_\_\_\_\_

PRINCIPAL/OFFICER'S NAME: \_\_\_\_\_

PRINCIPAL/OFFICER'S SIGNATURE: \_\_\_\_\_

DATE SIGNED: \_\_\_\_\_

#### JWSC'S STATEMENT:

THESE RECORD DRAWINGS HAVE BEEN PREPARED AND CONFIRMED BASED ON PERIODIC FIELD OBSERVATIONS DURING CONSTRUCTION, FIELD TESTING, CCTV AND PHYSICAL INSPECTIONS OF SYSTEM COMPONENTS BY JWSC STAFF. THIS INFORMATION HAS BEEN REVIEWED BY JWSC SUPERINTENDENTS AND CONSTRUCTION INSPECTION STAFF, AS CITED BELOW, AND TO THE BEST OF THEIR KNOWLEDGE AND BELIEF THESE RECORD DRAWINGS ARE ACCURATE AND COMPLETE IN ACCORDANCE WITH ADOPTED JWSC RECORD DRAWING STANDARDS AND SPECIFICATIONS.

WATER DISTRIBUTION SUPERINTENDENT'S NAME: N/A

WATER DISTRIBUTION SUPERINTENDENT'S SIGNATURE: N/A

DATE SIGNED: \_\_\_\_\_

WASTEWATER COLLECTION SUPERINTENDENT'S NAME: \_\_\_\_\_

WASTEWATER COLLECTION SUPERINTENDENT'S SIGNATURE: \_\_\_\_\_

DATE SIGNED: \_\_\_\_\_

PROJECT INSPECTOR'S NAME: \_\_\_\_\_

PROJECT INSPECTOR'S NAME SIGNATURE: \_\_\_\_\_

DATE SIGNED: \_\_\_\_\_

#### WATER STRUCTURE COORDINATES

GEORGIA COORDINATE SYSTEM, EAST ZONE - NAD 83

STRUCTURE	NORTHING	EASTING
WS-57	467176.79	858266.97
WS-58	467136.26	858307.42
WS-59	467136.26	858307.42
WS-60	467108.91	858349.41
WS-61	467104.69	858352.14
WS-62	467072.45	858395.17
WS-63	467067.74	858401.80
WS-64	467037.71	858444.84
WS-65	467035.21	858448.70
WS-66	467003.15	858494.18
WS-67	467001.27	858496.63
WS-68	466969.38	858540.86
WS-69	466966.27	858545.96
WS-70	466934.72	858589.48
WS-71	466932.04	858593.10
WS-147	467100.19	858451.25
WS-148	467146.90	858501.61
WS-149	467149.69	858505.21
WS-150	467188.27	858541.89
WS-151	467191.36	858544.98
WS-152	467231.11	858584.72
WS-153	467234.49	858588.22
WS-154	467274.28	858625.42
WS-155	467277.72	858629.81
WS-156	467314.48	858665.69
WS-157	467319.29	858670.65
WS-158	467355.67	858707.51
WS-159	467359.83	858712.49
WS-160	467399.66	858749.49
WS-161	467402.85	858753.09
WS-162	467440.65	858789.91
WS-163	467445.10	858794.31
WS-164	467482.46	858831.52
WS-165	467487.80	858835.81
WS-166	467525.57	858872.84
WS-167	467530.49	858877.25
WS-168	467567.41	858913.83
WS-169	467571.66	858919.01
WS-170	467608.88	858956.30
WS-171	467614.21	858961.30
WS-172	467692.48	859000.76
WS-173	467579.06	858996.77
WS-174	467541.21	858960.35
WS-175	467536.59	858955.48
WS-176	467499.82	858919.08
WS-177	467495.10	858913.84
WS-178	467458.69	858876.55
WS-179	467453.34	858872.87
WS-180	467416.91	858836.33
WS-181	467410.93	858831.60
WS-182	467374.25	858794.68
WS-183	467368.84	858790.49
WS-184	467331.20	858755.07
WS-185	467326.59	858749.43
WS-186	467288.22	858712.38
WS-187	467284.63	858709.21
WS-188	467247.86	858674.52
WS-189	467241.93	858665.79
WS-190	467003.15	858494.18
WS-191	467200.67	858625.84
WS-192	467163.39	858586.69
WS-193	467159.18	858584.14
WS-194	467120.18	858545.55
WS-195	467117.81	858542.87
WS-196	467082.69	858508.81
WS-362	467859.30	859294.12
WS-363	467892.19	859257.96
WS-364	467877.32	859274.31
WS-365	467934.16	859214.43
WS-366	468006.39	859220.91
WS-367	467968.96	859255.06
WS-368	467963.40	859258.54
WS-369	467925.52	859299.70
WS-370	467923.27	859301.80
WS-371	467883.72	859341.53
WS-372	467880.77	859343.92
WS-373	467854.20	859367.99
WS-374	467517.72	860063.91
WS-375	467539.59	860039.94
WS-376	467543.32	860035.77
WS-377	467579.06	859995.70
WS-378	467582.39	859992.62
WS-379	467619.46	859951.84
WS-380	467621.54	859947.71
WS-381	467656.39	859906.71
WS-382	467659.75	859902.50
WS-383	467695.86	859862.83
WS-384	467699.83	859858.10
WS-385	467732.70	859820.25
WS-386	467739.57	859814.08
WS-387	467773.49	859774.91
WS-388	467777.36	859770.86
WS-389	467813.07	859730.59
WS-390	467816.05	859727.72
WS-391	467852.22	859686.87
WS-392	467855.71	859682.93
WS-393	467891.53	859641.98
WS-394	467894.99	859638.27
WS-395	467930.23	859597.26
WS-396	467933.86	859593.89
WS-397	467967.84	859553.81
WS-398	467971.96	859549.46
WS-399	468008.27	859509.90
WS-400	468011.78	859505.67
WS-401	468049.31	859469.96

#### WATER STRUCTURE COORDINATES

GEORGIA COORDINATE SYSTEM, EAST ZONE - NAD 83

STRUCTURE	NORTHING	EASTING
WS-400	468011.78	859505.67
WS-401	468049.31	859469.96
WS-409	468075.78	859526.56
WS-410	468020.09	859570.63
WS-411	468017.49	859574.94
WS-412	467981.99	859614.69
WS-413	467979.10	859618.37
WS-414	467942.97	859659.48
WS-415	467939.72	859662.37
WS-416	467902.87	859704.93
WS-417	467901.04	859706.64
WS-418	467864.25	859747.34
WS-419	467861.88	859749.97
WS-420	467824.28	859792.13
WS-421	467823.01	859794.47
WS-422	467785.62	859836.96
WS-423	467782.79	859839.43
WS-424	467745.85	859880.47
WS-425	467744.96	859882.51
WS-426	467708.25	859924.92
WS-427	467705.91	859927.21
WS-428	467669.51	859968.95
WS-429	467667.55	859971.65
WS-430	467631.53	860013.65
WS-431	467628.75	860016.26
WS-432	467592.49	860058.30
WS-433	467589.10	860061.39
WS-434	467552.72	860102.19
WS-435	467549.23	860106.16
MV-1	467212.29	858227.98
MV-2	467039.51	858455.51
MV-3	467036.23	858459.77
MV-4	467039.46	858459.20
MV-5	466930.57	858606.56
MV-6	467121.67	858539.36
MV-7	467918.23	859184.86
MV-8	467973.55	859240.96
MV-9	468041.61	859483.11
MV-10	467464.41	860130.34
MV-11	467461.10	860129.80
MV-12	467464.81	860133.50
MV-13	467685.51	860350.07
MV-1	467110.01	858353.05
MV-2	467075.27	858402.15
MV-3	467041.19	858451.20
MV-4	467006.33	858498.27
MV-5	466971.78	858546.47
MV-6	466938.42	858594.34
MV-7	467115.67	858530.04
MV-8	467122.32	858542.36
MV-9	467157.75	858573.55
MV-10	467164.31	858582.13
MV-11	467199.68	858615.41
MV-12	467205.94	858623.72
MV-13	467242.75	858658.02
MV-14	467283.76	858699.23
MV-15	467289.32	858707.45
MV-16	467327.62	858741.18
MV-17	467333.05	858749.56
MV-18	467371.26	858783.39
MV-19	467375.69	858790.34
MV-20	467413.53	858823.08
MV-21	467417.57	858830.03
MV-22	467455.05	858863.41
MV-23	467459.10	858870.54
MV-24	467498.29	858906.44
MV-25	467502.23	858913.10
MV-26	467539.51	858948.41
MV-27	467543.32	858955.24
MV-28	467580.03	858989.18
MV-29	467678.40	859338.69
MV-30	467920.14	859294.96
MV-31	467926.66	859286.61
MV-32	467989.13	859541.69
MV-33	467973.76	859556.61
MV-34	467945.34	859592.45
MV-35	467936.32	859600.89
MV-36	467913.02	859631.45
MV-37	467897.23	859645.19
MV-38	467869.97	859678.92
MV-39	467857.82	859689.34
MV-40	467830.43	859721.96
MV-41	467817.52	859732.24
MV-42	467789.79	859767.54
MV-43	467779.36	859775.68
MV-44	467750.53	859811.46
MV-45	467738.12	859818.57
MV-46	467711.54	859856.16
MV-47	467700.39	859864.63
MV-48	467674.78	859897.77
MV-49	467662.00	859907.93
MV-50	467633.61	859941.55
MV-51	467622.53	859953.30
MV-52	467596.59	859985.60
MV-53	467582.82	859997.32
MV-54	467553.97	860032.99
MV-55	467544.18	860040.60
MV-56	467518.00	860074.14
MV-57	46740.71	858302.55
FHV-1	467140.71	858302.55
FHV-2	467140.71	858302.55
FHV-3	467152.59	860190.00
FHV-4	467737.34	859817.84

WALKER POINT WAY (50' PUBLIC R/W)

PAR LANE (50' PUBLIC R/W)

THOMAS TRAIL (50' PUBLIC R/W)

WALKER POINT WAY (50' PUBLIC R/W)

COMMON AREA

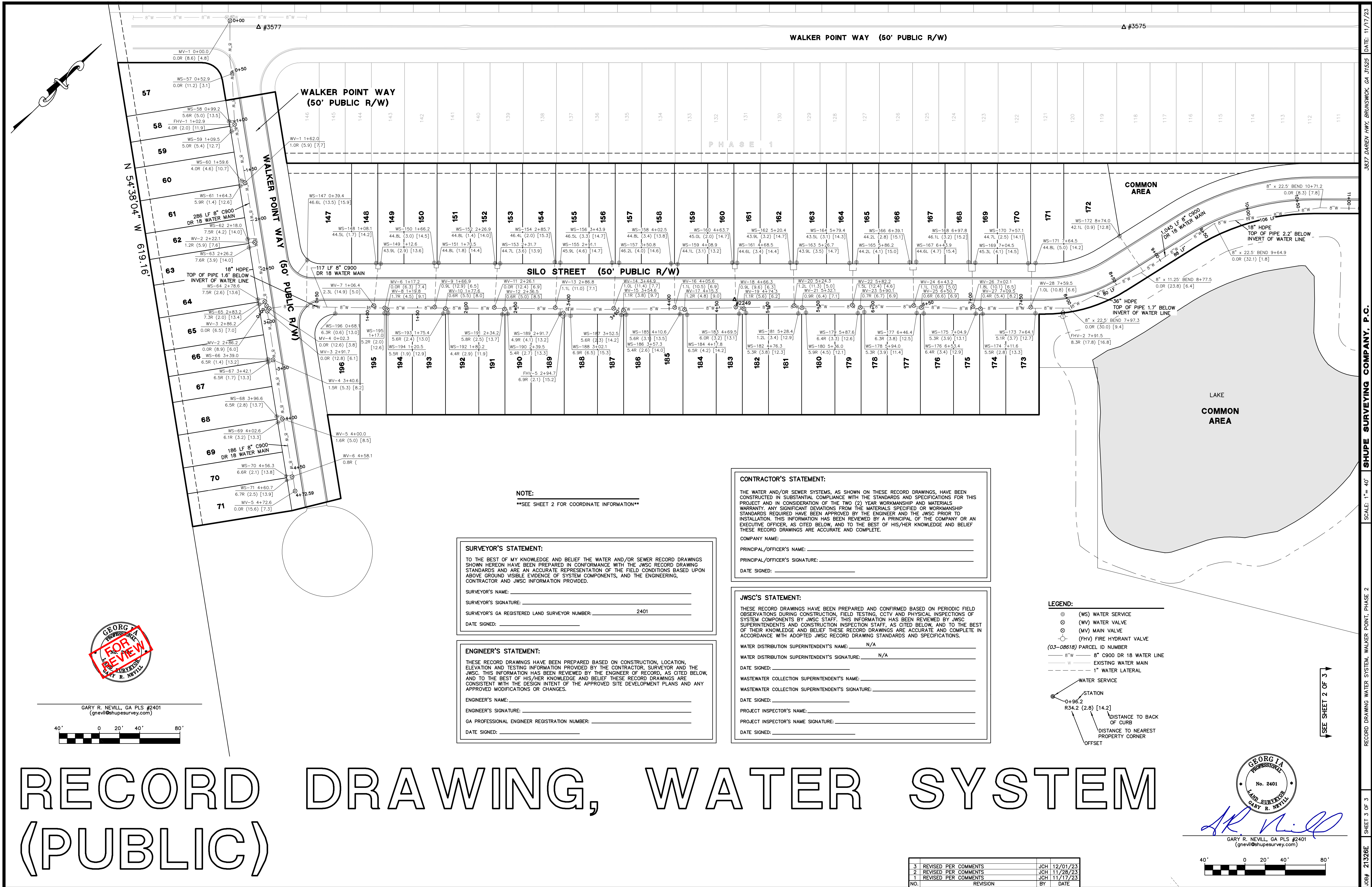
S 48.3726" E  
702.89'

GOLDEN ISLES PARKWAY (150' R/W)

#### LEGEND:

- (WS) WATER SERVICE
- (WV) WATER VALVE
- (MV) MAIN VALVE
- (FHV) FIRE HYDRANT VALVE
- (03-08618) PARCEL ID NUMBER
- 8" W 8" C900 OR 18" WATER LINE
- EXISTING WATER MAIN
- 1" WATER LATERAL
- WATER SERVICE
- STATION
- R34.2 (2.8) [14.2]
- DISTANCE TO BACK OF CURB
- DISTANCE TO NEAREST PROPERTY CORNER
- OFFSET







## Application for Dedication of Water/Wastewater Systems

### Part A: Statement of Intention

Having completed the installation of the water/wastewater system for the property tract or

Sub-division heretofore known as Walker Point Phase II; the current

Owner(s) of the system, being WALKER POINT LLC, located

at 324 S 5th St., Jesup, GA 31545, is desirous of dedicating the constructed

utility system(s) for ownership, operation and maintenance to the appropriate public entity licensed and permitted to operate such system(s) within this jurisdictional area. This Application and requested information is being submitted with this intention.

### Part B: Recognition and Acceptance of Warranties

The Owner/Developer of this water/wastewater system does hereby recognize and accept the responsibility for correcting any and all system defects that may occur or be found during the operation of the system by the JWSC for a period of two (2) years from the written date of acceptance by the governmental body to which the system is dedicated. This warranty covers materials and workmanship items, as well as those components of the infrastructure damaged by other utilities and/or contractors who may cause damage to the water/wastewater system as herein accepted, excepting such defects caused or resulting from the sole negligence of the JWSC.

### Part C: Confirmation of Compliance of Water/Wastewater Documentation

The Owner/Developer of this water/wastewater system does hereby warrant that the Record Drawings and all appropriate utility easements and/or deeds have been provided to the JWSC.

### Part D: Fair Value (Cost Basis) of Dedicated System (To be completed by Engineer)

The Fair Value (Cost Basis) of the installed **water system**, which is approximately 2,994 linear feet as constructed, is estimated to be \$ 199,999.

The Fair Value (Cost Basis) of the installed **sanitary sewer system**, which is approximately 2,506 linear feet, is estimated to be \$ 188,953.

The Fair Value (Cost Basis) of the installed **wastewater lift station**, which design capacity is \_\_\_\_\_ gallons per minute @ \_\_\_\_\_ feet Total Dynamic Head, is estimated to be \$ \_\_\_\_\_.

The Fair Value (Cost Basis) of the installed **potable water well**, which design capacity is \_\_\_\_\_ gallons per minute @ \_\_\_\_\_ feet Total Dynamic Head, is estimated to be \$ \_\_\_\_\_.



### Engineer's Certification

The information cited in Part "D" of this application is based on my professional evaluation of the costs of materials and installation of the water/wastewater system(s) as constructed in accordance with the approved standards and specifications for this project; and I do hereby certify, to the best of my knowledge and belief, that these amounts as provided are an accurate representation of this systems Fair Value on a Cost Basis as of the date of this Application.


Engineer Printed Name: Johnathan Roberts	Georgia P.E. Registration # : 034205
Engineer Signature: 	Date (mm/dd/yyyy): 11/06/2023

(INSERT ENGINEER SEAL)



### Part E: Owner/Developer Certification

I/We, WALKER POINT LLC, do hereby certify that all application information herein provided on the aforementioned water/wastewater development project is true and accurate to the best of my/our knowledge and belief.

Printed Name of Grantor (Company, LLC, Inc.): WALKER POINT LLC	
Printed Name of Grantor Representative: Wayne Moxley	
Title of Grantor: Owner	
Signature of Grantor: 	Date Signed (mm/dd/yyyy): 11/4/23

Only if this is a Corporation, include name of someone to Attest and insert the Corporate Seal  
Otherwise skip to Notary

Printed Name of Attestor:	
Title of Attestor:	
Signature of Attestor:	Date Signed (mm/dd/yyyy):

(CORPORATE SEAL HERE)

### All Applications must be Notarized

Date signed, sealed and delivered (mm/dd/yyyy):
In the presence of (printed Name of Notary):
Signature of Notary Public:
Date Notary Commission Expires (mm/dd/yyyy):



**ACCEPTED BY BRUNSWICK GLYNN JOINT WATER & SEWER COMMISSION**

<b>Date Accepted (Commission Meeting):</b>	
<b>Printed Name of Chairman:</b>	
<b>Signature of Chairman:</b>	<b>Date Signed (mm/dd/yyyy):</b>