



Brunswick-Glynn Joint Water and Sewer Commission
1703 Gloucester Street, Brunswick GA 31520
Thursday, September 21, 2023, at 2:00 pm
Commission Meeting Room

COMMISSION MEETING AGENDA

Call to Order

Invocation

Pledge

PUBLIC COMMENT PERIOD

Public Comments will be limited to 3 minutes per speaker. Comments are to be limited to relevant information regarding your position and should avoid being repetitious. Individuals should sign in stating your name, address and the subject matter on which you wish to speak. Your cooperation in this process will be greatly appreciated.

COMMITTEE UPDATES

Facilities Committee – Chairman Turnipseed

Finance Committee – Committee Chairman Stephens

APPROVAL

1. Minutes from August 17, 2023, Commission Meeting *(subject to any necessary changes)* [Report](#)
2. Minutes from August 17, 2023, Executive Session Meeting *(subject to any necessary changes)*
3. Contract Award – Canal Road Water Production Facility – A. Burroughs [Report](#)
4. Academy Creek Influent Pumps Purchase – A. Burroughs [Report](#)
5. Capital Equipment Purchase – Security Camera System Upgrades – K. Head [Report](#)

EXECUTIVE DIRECTOR'S UPDATE

COMMISSIONERS' DISCUSSION

CHAIRMAN'S UPDATE

EXECUTIVE SESSION

MEETING ADJOURNED

*All citizens are invited to attend.
There is a possibility of a quorum of City or County Commissioners being present.*



Brunswick-Glynn Joint Water and Sewer Commission
1703 Gloucester Street, Brunswick, GA 31520
Thursday, September 21, 2023, at 2:00 PM

COMMISSION MINUTES

PRESENT:

G. Ben Turnipseed, Chairman
Tripp Stephens, Vice-Chairman
Charles Cook, Commissioner
Wayne Neal, Commissioner
Kendra Rolle, Commissioner
Clayton Watson, Commissioner
Chad Strickland, Commissioner

ALSO PRESENT:

Andrew Burroughs, Executive Director
Charles A. Dorminy, HBS Legal Counsel
Pam Crosby, Director of Procurement
Todd Kline, Director of Engineering
Kalem Head, AMI/IT Services Manager
Janice Meridith, Executive Commission Admin.

Chairman Turnipseed called the meeting to order at 2:00 PM.

Chairman Turnipseed provided the invocation and Commissioner Stephens led the Pledge of Allegiance.

PUBLIC COMMENT PERIOD

Chairman Turnipseed opened the public comment period.

There being no public comment, Chairman Turnipseed closed the public comment period.

COMMITTEE UPDATES

Facilities Committee – Chairman Turnipseed stated that the Facilities Committee met the previous day. Two approval items were reviewed. The Academy Creek Influent Pumps Purchase was recommended to move forward to the full Commission. We will speak about the contract award for the Canal Road Water Production Facility today. On the ARCO project we are 60% complete on the water and a portion of the sewer is ready. Industry prices are increasing and JWSC needs to find some creative solutions.

Finance Committee – Commissioner Stephens stated that the Finance Committee also met the previous day. The same two approval items from the Facilities Meeting were discussed. The Influent Pumps for Academy Creek were recommended to move forward to the full Commission, in addition to Security Camera System Upgrades. The Finance Committee deferred the Canal Road Water Production Facility also.

APPROVAL

1. Minutes from the August 17, 2023, Regular Commission Meeting

Commissioner Cook made a motion seconded by Commissioner Stephens to approve the minutes from the August 17, 2023, Regular Commission Meeting. Motion carried 7-0-0.

2. Minutes from the August 17, 2023, Executive Session Meeting

Commissioner Cook made a motion seconded by Commissioner Stephens to approve the minutes from the August 17, 2023, Executive Session Meeting. Motion carried 7-0-0.

3. Contract Award – Canal Road Water Production Facility – A. Burroughs

Chairman Turnipseed commented that this was presented to the Facilities Committee with two bids being provided. The low bid received was substantially over budget. Staff will further discuss the project with the Engineer of Record to do some value engineering. This is a very important project. Mr. Burroughs briefly explained that this item was to be deferred until the next meeting.

Commissioner Stephens made a motion seconded by Commissioner Watson to defer this item until the next meeting in October. Motion carried 7-0-0.

4. Academy Creek Influent Pumps Purchase – A. Burroughs

Mr. Burroughs provided that the JWSC operates four (4) submersible pumps at Academy Creek to deliver the wastewater throughout the treatment process. There are currently two pumps down which were sent for rehab but the 12" Yeomans pumps are obsolete, and parts are not available. While some parts could be machined, staff has received quotes of \$30,000 to machine a new impeller for the Yeomans pump. Given the critical nature of these pumps, staff solicited quotes from Flygt, KSB, and Grundfos for the purchase of two new pumps for the plant. Hydraulic pumps have been rented to provide additional pumping capacity at the plant during high flow events. Due to advances in motor and pump efficiencies all three manufacturers quoted pumps that were lower hp than the existing 125 hp pumps. This will allow the existing VFDs to be reutilized with the pumps. The Flygt pump is preferred for the applications, and they have an adaptor plate to allow for the use of the currently designed guide rail system and pump base. The other two manufacturers' pumps will require machining an adaptor plate specifically for the plant setup. This item was presented to the Facilities and Finance Committees on September 20, 2023.

Commissioner Neal made a motion seconded by Commissioner Watson to move that the Brunswick-Glynn Joint Water and Sewer Commission approve the purchase of two new Flygt influent pumps for Academy Creek from Xylem Water Solutions, USA, Inc. in the amount of \$161,972.40. Motion carried 7-0-0.

5. Capital Equipment Purchase – Security Camera System Upgrades – A. Burroughs

Mr. Burroughs stated that in the past year the IT team has upgraded the existing network video recorders for the Administrative Building, Academy Creek WWTP, and South Harrington Water Distribution office while also adding additional cameras at each location. To increase access control security monitoring, warehouse activity, and process monitoring at these locations, additional cameras are needed. Likewise, complete camera systems need to be installed by staff at the Dunbar Creek and Southport WWTPs where no access control video security monitoring presently exists. To provide this increase in security monitoring while minimizing the upfront costs, installation will be performed by the AMI/It Field Technicians as a function of their regular duties. The capital expense was previously approved in the amount of \$70,000 for itemized hardware, wiring, connectors, and other incidentals being purchased, as needed, through the approved Building Maintenance budget.

Commissioner Stephens made a motion seconded by Commissioner Neal that the JWSC approve the capital investment of \$69,843.50 to purchase cameras and additional hardware to establish or to increase security and process monitoring at our facilities. Motion carried 7-0-0.

EXECUTIVE DIRECTOR'S UPDATE

Mr. Burroughs advised that the pre-construction meeting for the four pump station rehabs that have been awarded was held last week with Popco, Inc. Popco is also working on the repairs out on 341. That is now on bypass and is going well at this point. Next week a pre-construction meeting will be held for the North Mainland Water Loops Project. The base phase of the Dunbar Project is expected to be completed in November. They have begun installation of the mechanical equipment for the filters and the UV system. The aeration basin is back online and doing very well. The roadway work on the main entrance should begin in

the next couple of weeks and be wrapped up in November. Construction times will be coordinated in order to not affect traffic at the end of October. For the additional work at Academy Creek we are still waiting on the EPD approval for the RAZ pumps, and the equipment for the UV system is expected to be delivered next week.

COMMISSIONERS' DISCUSSION

Commissioner Neal inquired about the progress on alternative sewer programs. Mr. Burroughs advised that staff is finalizing the updated standards. Stakeholders' meetings will be held on the new standards. Hopes are to bring that before the Commission in November for approval. Mr. Burroughs has also had some conversations with EPD about opportunities for sewer alternatives in the farther out areas.

CHAIRMAN'S UPDATE

The Chairman noted he is concerned about increases in material costs, labor costs, availability, and long delivery lead times. This is significantly happening industry wide within water and sewer projects. JWSC may want to delay some of the larger projects. We must find more revenue and may have to consider raising rates in the future. Chairman Turnipseed noted his concern on this issue. We will continue to work on this, as we have to work with it.

EXECUTIVE SESSION

There was no Executive Session.


ADJOURN

There being no additional business to bring before the Commission, Chairman Turnipseed requested a motion to adjourn the meeting.


Commissioner Neal made a motion seconded by Commissioner Stephens to adjourn the meeting. Motion carried 7-0-0.

The Chairman adjourned the meeting at 2:17 p.m.

Attest:



Janice Meridith,
Executive Commission Administrator



G. Ben Turnipseed,
Commission Chairman



Brunswick-Glynn

Joint Water and Sewer Commission

Memorandum

To: Brunswick-Glynn Joint Water and Sewer Commission
From: Andrew Burroughs, Executive Director
Date: Thursday, September 21, 2023
Re: Academy Creek Influent Pumps Purchase

Background:

The JWSC operates four (4) submersible influent pumps at Academy Creek to pump the wastewater throughout the treatment process. There are currently two (2) pumps down that were sent to separate repair shops for consideration for rehabbing the pumps. The existing 125 horsepower (hp), 12" Yeomans pumps are obsolete, and parts are not available for rehabbing the existing pumps. The lack of availability of parts was confirmed by both repair shops and a manufacturer's representative for the Yeomans line of pumps. While some parts could be machined, staff has received quotes of \$30,000 to machine a new impeller for the Yeomans pump. Given the critical nature of these pumps, staff solicited quotes for the purchase of two (2) new pumps for the plant. Hydraulic pumps have been rented to provide additional pumping capacity at the plant during high flow events.

Staff Report

Staff has been working with multiple pump manufacturers to determine the best combination of fit and price for these replacement pumps. Staff solicited quotes from Flygt, KSB, and Grundfos for replacement of the two pumps. Due to advances in motor and pump efficiencies since the last replacement of the influent pumps, all three manufacturers quoted pumps that were lower hp than the existing 125 hp pumps, which will allow the existing VFDs to be reutilized with new pumps. The quotes for two pumps are shown below:

Company	Pump Manufacturer	Cost	hp	Discharge
Goforth Williamson, Inc.	Grundfos	\$125,352.00	107	10"
Pump & Process Equipment, Inc.	KSB	\$129,970.00	121	15"
Xylem Water Solutions USA, Inc.	Flygt	\$161,972.40	110	12"

One significant item to note is that the Flygt pumps have an adaptor plate to allow for use of the currently designed guide rail system and pump base. Staff has done multiple Yeomans to Flygt conversions with no issues. The other two manufacturers will require machining an adaptor plate specifically for the plant setup.

This item was presented to the Facilities and Finance Committees on September 20, 2023.

Recommended Action

Staff recommends purchasing two (2) Flygt pumps from Xylem Water Solutions for a cost of \$161,972.40. While these pumps are more costly, Flygt is the most direct conversion from the current Yeomans pump and are the standard pump that we use throughout our system for larger applications.

Recommended Motion

"I move that the Brunswick-Glynn Joint Water and Sewer Commission approve the purchase of two new Flygt influent pumps for Academy Creek from Xylem Water Solutions USA, Inc. in the amount of \$161,972.40."

Enclosures

Pump Quotes



Xylem Water Solutions USA, Inc.
Flygt Products

August 3, 2023

BRUNSWICK-GLYNN JNT SWR & WTR
1703 GLOUCESTER ST
1703 GLOUCESTER ST
BRUNSWICK GA 31520-6902

128 A Airport Park Drive
Garden City, GA 31408
Tel (912) 966-1577
Fax (912) 966-1579

Quote # 2023-SAV-0313
Project Name: BRUNSWICK GLYNN
Job Name: Influent Pump Replacement

Xylem Water Solutions USA, Inc. is pleased to provide a quote for the following Flygt equipment.

Qty	Part Number	Description	Unit Price
2	3315.185-YYYY	Flygt Model NP-3315.185 12" volute Submersible pump equipped with a 460 Volt / 3 phase / 60 Hz 110 HP 1150 RPM motor, 626 impeller, 1 x 50 Ft. length of SUBCAB 3x50+2G35/2+S(2x0,5) submersible cable, FLS leakage detector, volute is prepared for Flush Valve	\$ 75,253.70
		3315.185-0179 except with EPO	
			Price \$ 150,507.40

Recommended Services			
Qty	Part Number	Description	Unit Price
1	14-69 00 09A	START UP,FLYGT,NO TAX 1-TP MODELS: 3000,7000,8000	\$ 1,575.00

Recommended Services Price \$ 0.00

Total Price \$ 150,507.40

Freight Charge \$ 11,465.00

Total Price \$ 161,972.40

Terms & Conditions

This order is subject to the Standard Terms and Conditions of Sale – Xylem Americas effective on the date the order is accepted which terms are available at <http://www.xyleminc.com/en-us/Pages/terms-conditions-of-sale.aspx> and incorporated herein by reference and made a part of the agreement between the parties.

Purchase Orders: Please make purchase orders out to: Xylem Water Solutions USA, Inc.

Page 1 of 3



Freight Terms: 3 DAP - Delivered At Place 08 - Jobsite (per Incoterms 2020)
See Freight Payment (Delivery Terms) below.

Taxes: State, local and other applicable taxes are not included in this quotation.

Back Charges: Buyer shall not make purchases nor shall Buyer incur any labor that would result in a back charge to Seller without prior written consent of an authorized employee of Seller.

Shortages: Xylem will not be responsible for apparent shipment shortages or damages incurred in shipment that are not reported within two weeks from delivery to the jobsite. Damages should be noted on the receiving slip and the truck driver advised of the damages. Please contact our office as soon as possible to report damages or shortages so that replacement items can be shipped and the appropriate claims made.

Terms of delivery: Freight PP/Line Item

Time of delivery: Approx. 12-14 working weeks after release of order.

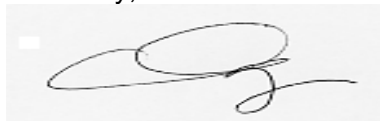
Terms of payment: 100% N60 after invoice date – upon acceptance of purchase order and credit review

Please note: If this is an FM Factory certified product it must be serviced by an EX/FM Flygt manufacture trained technician through an approved Xylem Flygt repair shop to retain qualifying status of product to retain the "EX/FM" designation.

Our current delivery lead-times are forecasted estimates only due to the outbreak of the COVID-19 virus pandemic and its global effects on commerce, supply chain, and logistics. Xylem will, however, use all commercially reasonable efforts to minimize any delivery delay impacts.

Thank you for the opportunity to provide this quotation. Please contact us if there are any questions.

Sincerely,



Kirsten Royals
Senior Technical Inside Sales III
Phone: 678-804-5692
Cell: 404-831-4726
kirsten.royals@xylem.com
Fax: 770-932-4321



Xylem Water Solutions USA, Inc.
Flygt Products

Customer Acceptance

This order is subject to the Standard Terms and Conditions of Sale – Xylem Americas effective on the date the order is accepted which terms are available at <http://www.xyleminc.com/en-us/Pages/terms-conditions-of-sale.aspx> and incorporated herein by reference and made a part of the agreement between the parties.

A signed copy of this Quote is acceptable as a binding contract.

Purchase Orders: Please make purchase orders out to: Xylem Water Solutions USA, Inc.

Quote #: 2023-SAV-0313
Customer Name: BRUNSWICK-GLYNN JNT SWR & WTR
Job Name: Influent Pump Replacement
Total Amount: \$ 150,507.40
(excluding freight)

Signature: _____	Name: _____ (PLEASE PRINT)
Company/Utility: _____	PO: _____
Address: _____	Date: _____
_____	Phone: _____
_____	Email: _____
_____	Fax: _____





Goforth Williamson, Inc.
 Mail To: 373 O'Dell Road
 Ship To: 377 O'Dell Road
 Griffin, GA 30224
 United States of America

Ph: 770-467-0303

Fax: 770-467-0301

Quote

ID: P222643

Date: 02-May-23

To

Brunswick Glynn County Joint Water & Sewer
 1703 Gloucester St
 Brunswick, GA 31520
 United States of America

Quote To

SAME

Ph: 912-261-7100

Fax: 912-261-7178

Terms		Ship Via		Salesperson
Net 30 Days		Pre-Pay& ADD		JLEGAN
Quantity	Description	Unit Price	Amount	
	Reference: Academy Creek Yeoman PER YOUR REQUEST, WE ARE PLEASED TO QUOTE THE FOLLOWING:			
1	Line: 001 Part: 92763813 S2.40.A100.1070.8.70H.C.523.G S2.40.A100.1070.8.70H.C.523.G.EX.D.611.Z Grundfos Submersible Solids Handling Pump 10" Horizontal Flanged Discharge / 3-15/16" Solids 2 Channel Enclosed Impeller 107 hp 882rpm 460/3/60 Explosion Proof Motor Seal Leakage Detector / Winding Thermal Switches 49 ft Long EMC Cord ea	Expiration Date: 01-Jun-23 Rev:	\$57,426.00	\$57,426.00
1	Line: 002 Part: 10" GRUNDFOS TO 12" YEOMANS Adapter Adapter Scope of Work: 1. Machine/manufacture the following: a) 1 ea. – Grundfos to Yeomans Adapter Note: Customer must be able to provide the existing Yeomans guide claw. This adapter does not replace the existing guide claw, but rather converts it for use with an ANSI discharge pump. For the above scope of work, GWI Quotes:	Expiration Date: 01-Jun-23 Rev: BUDGET	\$4,450.00	\$4,450.00



Goforth Williamson, Inc.
 Mail To: 373 O'Dell Road
 Ship To: 377 O'Dell Road
 Griffin, GA 30224
 United States of America

Ph: 770-467-0303

Fax: 770-467-0301

Quote

ID: P222643

Date: 02-May-23

To

Brunswick Glynn County Joint Water & Sewer
 1703 Gloucester St
 Brunswick, GA 31520
 United States of America

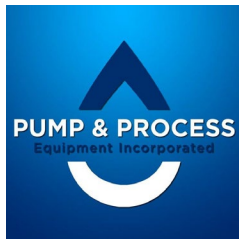
Quote To

SAME

Ph: 912-261-7100

Fax: 912-261-7178

Terms		Ship Via		Salesperson
Net 30 Days		Pre-Pay& ADD		JLEGAN
Quantity	Description	Unit Price		Amount
1	Line: 003 Part: SHIPPING & HANDLING CHARGES Shipping & Handling Charges In Bound Standard Ground Shipping Charges ea	Expiration Date: 01-Jun-23 Rev:		\$800.00
	Quote prepared by Jesse Larios PLEASE NOTE: 1. Freight: FOB Origin, ground freight prepaid and charged to curbside of first location. 2. Price "does not" reflect Sales Tax, Documentation, Drawings, or Special Paperwork. 3. We can now accept Visa, Mastercard, American Express and Discover. Please contact us if you would like to pay via credit card. 4. Please reference Quote on Purchase order and send your Purchase orders to PurchaseOrders@GoforthWilliamson.com THANK YOU FOR THE OPPORTUNITY TO PROVIDE THIS QUOTE. PLEASE CALL 770-467-0303, OR YOUR SALES REP, IF YOU HAVE ANY QUESTIONS.	Total:		\$62,676.00



Pump and Process Equipment

8343 Roswell Road, Suite 315
Atlanta, GA 30350
Cell (912) 659-6180
Office (770) 814-0402

Sales
Service
Support

April 28, 2023

Quote #23-1092G

To: David Grantham @ BGJWSC
From: Jay Boudreaux @ Pump & Process Equipment, Inc.
Re: Academy Creek Influent Pump

Pump and Process Equipment, Inc. is pleased to offer the following equipment for your consideration:

- (1) KSB Model KRT K 300-400/1006XNG-K Dry Pit Submersible Pump
121 HP, 460/3/60, 50ft Cable
- (1) Cooling Jacket
- (1) ANSI Discharge Flange to Mate to Existing Claw
- (1) Pump Safe Relay with Base
- (1) Seven Year Warranty
- (1) Submittals, Start-Up and O&M Manuals

Price \$64,985.00 price including freight

Note: Taxes not included. Terms are NET 30.

We appreciate the opportunity to offer this proposal for your approval and look forward to earning your business. Should you have any questions or need any additional information please do not hesitate to contact us.

Sincerely,

Jay Boudreaux

Jay Boudreaux
Pump and Process Equipment Inc.
jay@pumpandprocess.net
912-659-6180

Data sheet



Customer item no.:
Communication dated: 28/04/2023
Doc. no.: JWSC Influent Pump
Quantity: 1

Number: ES 8002374626
Item no.: 100
Date: 28/04/2023
Page: 1 / 6

KRTK 300-400/1006XNG-K

Version no.: 1

Operating data

Requested flow rate	6250.00 US GPM	Actual flow rate	6251.68 US GPM
Requested developed head	53.00 ft	Actual developed head	53.03 ft
Pumped medium	Wastewater, municipal untreated	Efficiency	83.9 %
Pumped medium details	Not containing chemical and mechanical substances which affect the materials	Power absorbed	102.70 HP
Ambient air temperature	68.0 °F	Pump speed of rotation	1183 rpm
Fluid temperature	104.0 °F	Shutoff head	95.18 ft
Fluid density	64.175984 lb/ft ³	Design	Single system 1 x 100 %
Fluid viscosity	0.0010 in ² /s	Performance test	No
Max. power on curve	102.89 HP		
			Tolerances to ISO 9906 Class 3B; below 10 kW acc. to paragraph 4.4.2

Design

Design	Close-coupled submersible	Impeller type	Multivane radial flow impeller (K)
Orientation	Vertical	Wear ring	Casing wear ring
Suction flange pump drilled according to(DN1)	unmachined	Impeller diameter	14.96 in
Discharge flange pump drilled according to(DN2)	ASME B 16.1 / NPS 12 / CL 125 / FF	Free passage size	3.9 in
Shaft seal	2 mech. seals in tandem arrangement with oil reservoir	Direction of rotation from drive	Clockwise
Shaft seal manufacturer	KSB	Ex protection	Explosion protection to NEC Class1, Div 1, Gr.C, D T3
Type (MS inboard)	MG	Temperature sensor PT100 inboard	With
Material code (MS inboard)	SIC/SIC/NBR	Color	Ultramarine blue (RAL 5002) KSB-blue

Driver, accessories

Driver type	Electric motor	Motor winding	460 V
Model (make)	KSB	Number of poles	6
Motor const. type	KSB Sub. motor	Starting mode	Direct-on-line starting
NEMA code letter	F	Connection mode	Delta
Frequency	60 Hz	Motor cooling method	closed-circuit jacket cooling
Rated voltage	460 V	Motor cooling jacket	With
Rated power P2	121.00 HP	Motor version	X
Available reserve	17.82 %	Cable design	Rubber hose
Rated current	140.0 A	Cable entry	Sealed along entire length
Starting current ratio	6	Power cable	AWG 3-4
Insulation class	H according IEC 34-1	Number of power cables	2
Type of protection	XP/II/1/CD	Control cable	AWG 15-10
Motor enclosure	IP68	Number of control cables	1
Cos phi at 4/4 load	0.88	Moisture sensor	With
Motor efficiency at 4/4 load	91.6 %	Cable length	49.21 ft
Motor service factor	1.15		
Temperature sensor	PTC resistor		

Data sheet



Customer item no.:
Communication dated: 28/04/2023
Doc. no.: JWSC Influent Pump
Quantity: 1

Number: ES 8002374626
Item no.: 100
Date: 28/04/2023
Page: 2 / 6

KRTK 300-400/1006XNG-K

Version no.: 1

Materials G

Pump casing (101)	Cast iron A 48 Class 35 B	Casing wear ring (502.1)	Cast iron A 48 Class 35 B
Discharge cover (163)	Cast iron A 48 Class 35 B	Shaft protecting sleeve (524)	Chrome steel A 276 Type 420
Shaft (210)	Chrome steel ASTM A276 Type 420 T	Cooling jacket (66-2)	Stainless steel A 276 Type 316 Ti
Impeller (230)	Cast iron A 48 Class 35 B	Motor housing (811)	Cast iron A 48 Class 35 B
Bearing bracket (330)	Cast iron A 48 Class 35 B	Motor cable (824)	Chloroprene rubber
O-Ring (412)	Nitrile rubber NBR	Screw (900)	Stainless steel A 193 B8M

Packaging

IPPC Standard ISPM 15	Yes	Packaging for transport	Truck
Packaging category	B1 Wooden or plywood case, cover provided with polypropylene cellular sheet, outdoor storage up to 3 months	Outdoor storage at -40 °C to +50°C for up to 3 months. Packet must be covered. No corrosion protection, only transport protection.	
Packaging for storage	Indoor		

Nameplates

Nameplates language	International	Duplicate nameplate	With
---------------------	---------------	---------------------	------

Installation parts

Scope of supply	Pump without installation parts
-----------------	---------------------------------

Performance curve

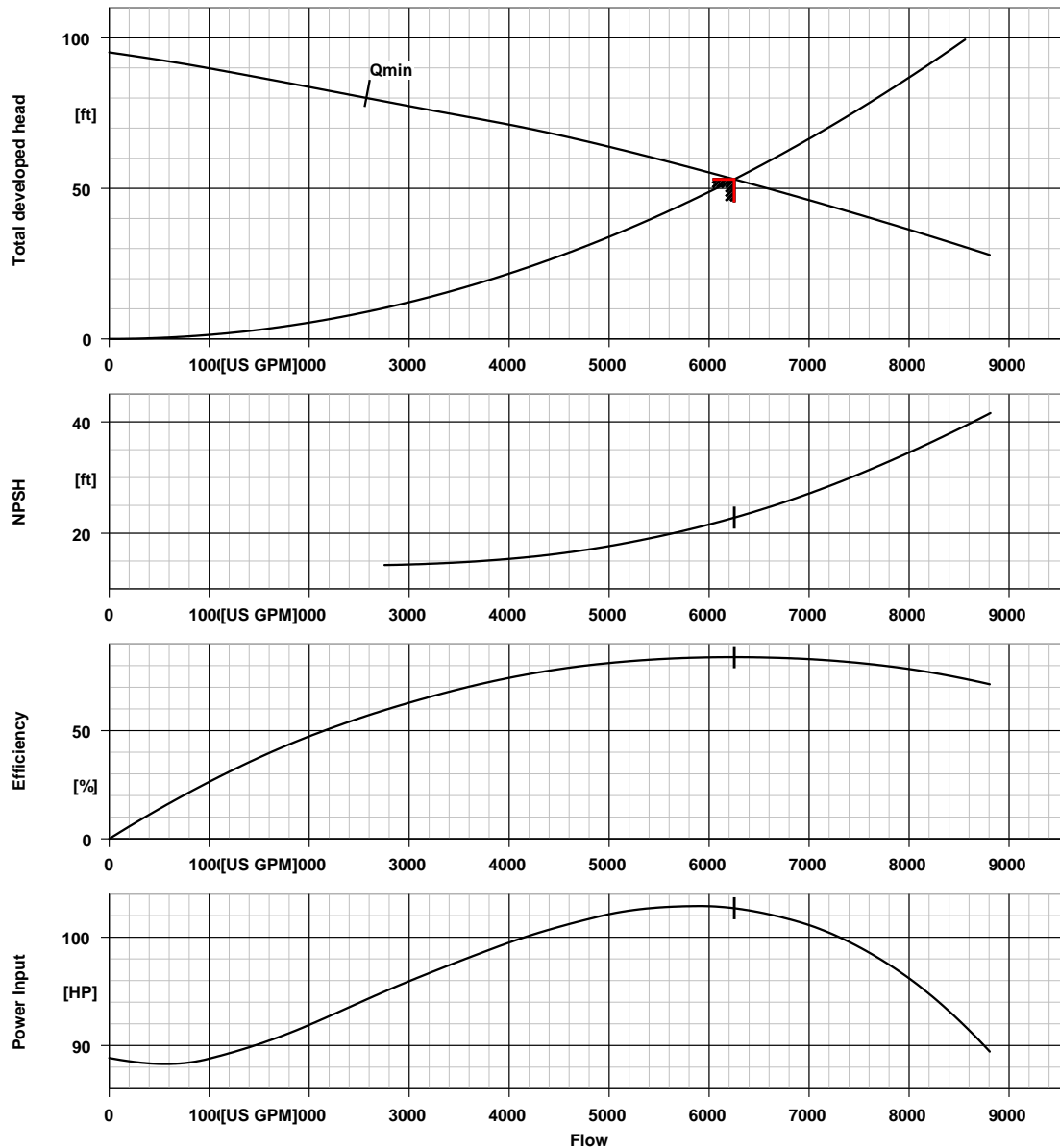


Customer item no.:
Communication dated: 28/04/2023
Doc. no.: JWSC Influent Pump
Quantity: 1

Number: ES 8002374626
Item no.:100
Date: 28/04/2023
Page: 3 / 6

KRTK 300-400/1006XNG-K

Version no.: 1



Curve data

Speed of rotation 1183 rpm
Fluid density 64.175984 lb/ft³
Viscosity 0.0010 in²/s
Flow rate 6251.68 US GPM
Requested flow rate 6250.00 US GPM
Total developed head 53.03 ft
Requested developed head 53.00 ft

Efficiency 83.9 %
Power absorbed 102.70 HP
NPSH 3% 22.80 ft
Curve number K41682/6
Effective impeller diameter 14.96 in
Acceptance standard Tolerances to ISO 9906
Class 3B; below 10 kW
acc. to paragraph 4.4.2

Motor data sheet



Customer item no.:
Communication dated: 28/04/2023
Doc. no.: JWSC Influent Pump
Quantity: 1

Number: ES 8002374626
Item no.:100
Date: 28/04/2023
Page: 4 / 6

KRTK 300-400/1006XNG-K

Version no.: 1

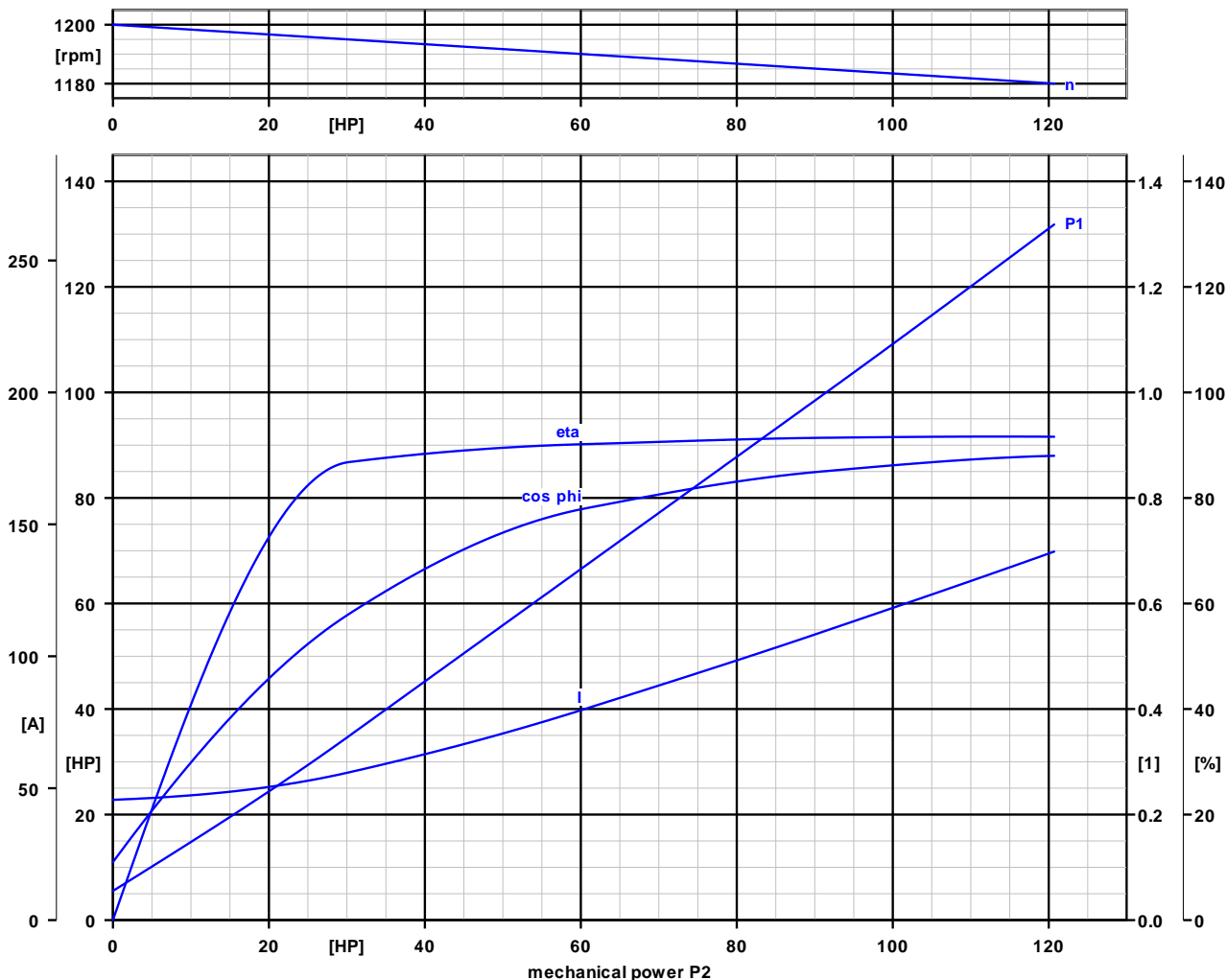
Motor data

Motor manufacturer	KSB	Starting mode	Direct-on-line starting
Motor size	100N	Power cable	AWG 3-4
Motor construction type	KSB Sub. motor	Number of power cables	2
Motor material	Grey cast iron EN-GJL-250	Power cable Ø min.	1.06 in
Efficiency class	not classified	Power cable Ø max.	1.13 in
Rated voltage	460 V	Control cable	AWG 15-10
Frequency	60 Hz	Number of control cables	1
Motor power	121.00 HP	Ctrl. cable diameter, min.	0.63 in
Rated current	140.0 A	Ctrl. cable diameter, max.	0.67 in
Rated speed	1180 rpm	Cable standard	NEC
Starting current ratio	6	Switching frequency	10.00 1/h

Curve data

The no-load point is not a guarantee point within the meaning of IEC 60034

Load	0.0 %	25.0 %	50.0 %	75.0 %	100.0 %
P2	0.00 HP	30.25 HP	60.49 HP	90.75 HP	121.00 HP
n	1200 rpm	1195 rpm	1190 rpm	1185 rpm	1180 rpm
P1	5.53 HP	34.87 HP	67.05 HP	99.24 HP	132.16 HP
I	45.6 A	56.0 A	80.0 A	109.0 A	140.0 A
Eta	0.0 %	86.8 %	90.2 %	91.4 %	91.6 %
cos phi	0.11	0.58	0.78	0.85	0.88



Installation plan

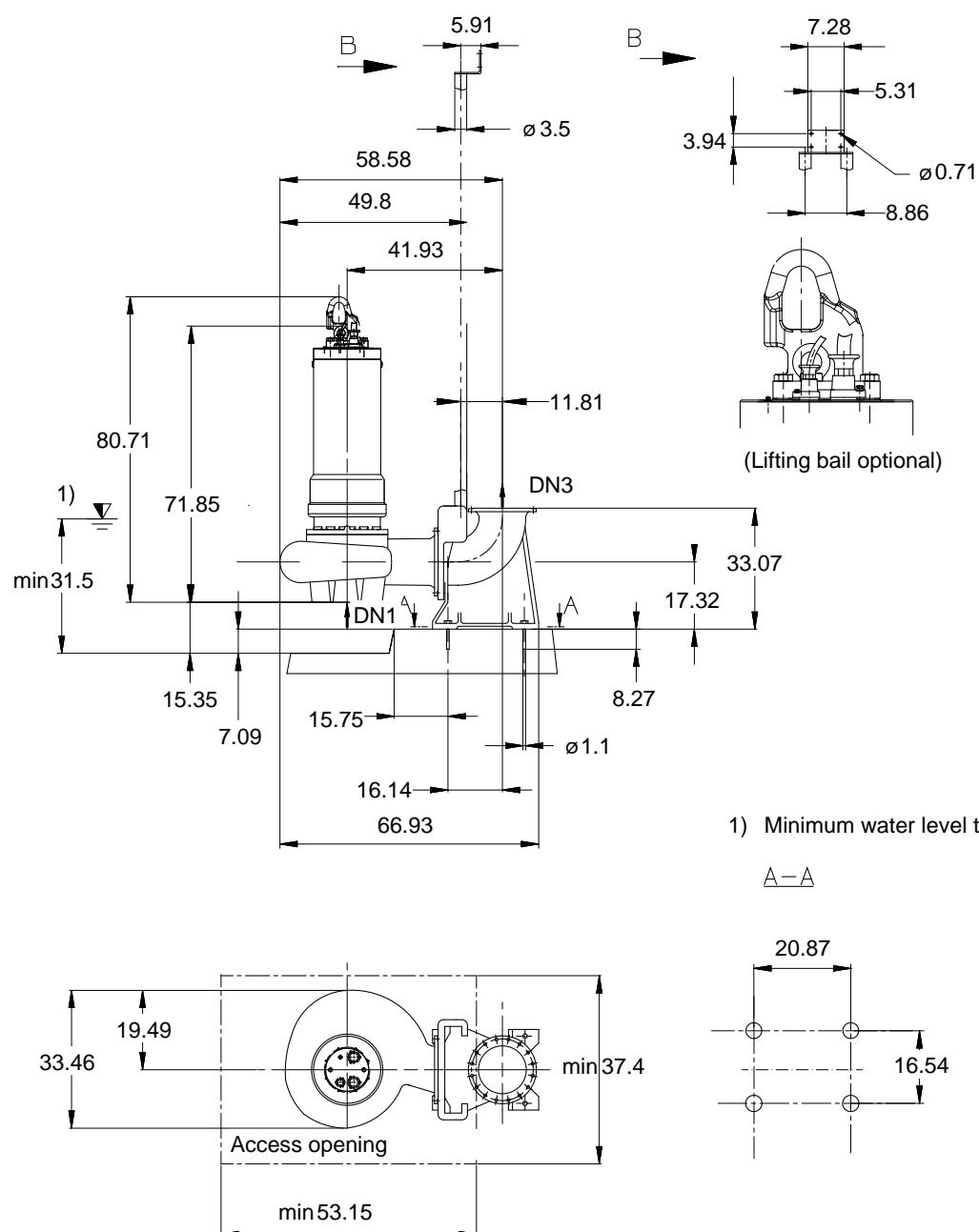


Customer item no.:
Communication dated: 28/04/2023
Doc. no.: JWSC Influent Pump
Quantity: 1

Number: ES 8002374626
Item no.:100
Date: 28/04/2023
Page: 5 / 6

KRTK 300-400/1006XNG-K

Version no.: 1



Drawing is not to scale

Dimensions in in

Installation plan



Customer item no.:
Communication dated: 28/04/2023
Doc. no.: JWSC Influent Pump
Quantity: 1

Number: ES 8002374626
Item no.:100
Date: 28/04/2023
Page: 6 / 6

KRTK 300-400/1006XNG-K

Version no.: 1

Motor

Motor manufacturer	KSB
Motor size	100N
Motor power	121.00 HP
Number of poles	6
Speed of rotation	1180 rpm
Motor enclosure	IP68

Connections

Suction flange pump drilled according to(DN1)	unmachined
Discharge flange pump drilled according to(DN2)	ASME B 16.1 / NPS 12 / CL 125 / FF

Weight net

Pump, Motor, Cable	3124 lbm
Total	3124 lbm

For auxiliary connections see separate drawing.

Connect pipes without stress or strain!

Dimensional tolerances for shaft axis height: DIN 747
Dimensions without tolerances, middle tolerances to:
Connection dimensions for pumps:
Dimensions without tolerances - welded parts:
Dimensions without tolerances - gray cast iron parts:
Dimensions without tolerances - stainless steel parts:

ISO 2768-m
EN735
ISO 13920-B
ISO 8062-CT11
ISO 8062-CT12



Brunswick-Glynn

Joint Water and Sewer Commission

Memorandum

To: Brunswick-Glynn Joint Water & Sewer Commission
From: Kalem Head, AMI/IT Services Manager
Date: September 21, 2023
Re: Capital Equipment Purchase – Security Camera System Upgrades

Background

In the past year, the IT team has upgraded the existing network video recorders for the Administrative Building, Academy Creek WWTP, and South Harrington Water Distribution office while also adding additional cameras at each location. To increase access control security monitoring, warehouse activity, and process monitoring at these locations, additional cameras are needed. Likewise, complete camera systems need to be installed by staff at the Dunbar Creek and Southport WWTPs where no access control video security monitoring presently exists.

Staff Report

To provide this increase in security monitoring while minimizing upfront costs, installation will be performed by the AMI/IT Field Technicians as a function of their regular duties. The capital expense was previously approved for the approximate cost of \$70,000 for itemized hardware. Current prices yield a total of \$69,843.50, with mounts, mounting hardware, wiring, connectors, and other incidentals being purchased, as needed, through the approved Building Maintenance budget.

Recommended Action

Staff requests Commission authorization for the purchase of camera system hardware at a price of \$69,843.50 to increase security monitoring at the Dunbar Creek WWTP, Southport WWTP, Academy Creek WWTP and South Harrington facilities.

Recommended Motion

"I move that the Brunswick-Glynn Joint Water and Sewer Commission approve the capital investment of \$69,843.50 to purchase cameras and additional hardware to establish or to increase security and process monitoring at our facilities."

Enclosures

Security Camera System Upgrade – 2023-2024 - Price List

Security Camera System Upgrade - 2023-2024 Price List

	SKU	Quantity	IP Phone Warehouse			B&H Photo and Video			CDW-G		
			Item Price	Total Price	Location Total	Item Price	Total Price	Location Total	Item Price	Total Price	Location Total
Dunbar Creek WWTP (New Network Video Recorder Installation with 12 Cameras)											
AXIS Camera Station S2224 NVR	01583-004	1	4699.99	4699.99		4799.00	4799.00		4932.62	4932.62	
Axis Surveillance Hard Drive (6tb)	01859-001	2	381.99	763.98		389.00	778.00		386.99	773.98	
Axis P1378-LE 4K UHD Camera	01811-001	3	1155.99	3467.97		1179.00	3537.00		1180.03	3540.09	
Axis P3268-LVE Camera	02332-001	5	1027.99	5139.95		1043.76	5218.80		1050.23	5251.15	
Axis P3807-PVE 180° Panoramic Camera	01048-004	4	1419.99	5679.96		1449.00	5796.00		1450.54	5802.16	
Axis T94P01B corner camera bracket for P3807-PVE	5504-711	4	89.00	356.00		89.00	356.00		89.85	359.40	
					\$ 20,107.85			\$ 20,484.80			\$ 20,659.40
Southport WWTP (New Network Video Recorder Installation with 12 Cameras)											
AXIS Camera Station S2224 NVR	01583-004	1	4699.99	4699.99		4799.00	4799.00		4932.62	4932.62	
Axis Surveillance Hard Drive (6tb)	01859-001	2	381.99	763.98		389.00	778.00		386.99	773.98	
Axis P1378-LE 4K UHD Camera	01811-001	3	1155.99	3467.97		1179.00	3537.00		1180.03	3540.09	
Axis P3268-LVE Camera	02332-001	5	1027.99	5139.95		1043.76	5218.80		1050.23	5251.15	
Axis P3807-PVE 180° Panoramic Camera	01048-004	4	1419.99	5679.96		1449.00	5796.00		1450.54	5802.16	
Axis T94P01B corner camera bracket for P3807-PVE	5504-711	4	89.00	356.00		89.00	356.00		89.85	359.40	
					\$ 20,107.85			\$ 20,484.80			\$ 20,659.40
Academy Creek WWTP & Warehouse (Add 12 Cameras to 8 Existing)											
Axis P1378-LE 4K UHD Camera	01811-001	4	1155.99	4623.96		1179.00	4716.00		1180.03	4720.12	
Axis P3268-LVE Camera	02332-001	4	1027.99	4111.96		1043.76	4175.04		1050.23	4200.92	
Axis P3807-PVE 180° Panoramic Camera	01048-004	4	1419.99	5679.96		1449.00	5796.00		1450.54	5802.16	
Axis T94P01B corner camera bracket for P3807-PVE	5504-711	4	89.00	356.00		89.00	356.00		89.85	359.40	
					\$ 14,771.88			\$ 15,043.04			\$ 15,082.60
South Harrington WD Office & Warehouse (Add 12 Cameras to 7 Existing)											
Axis P1378-LE 4K UHD Camera	01811-001	4	1155.99	4623.96		1179.00	4716.00		1180.03	4720.12	
Axis P3268-LVE Camera	02332-001	4	1049.00	4196.00		1043.76	4175.04		1050.23	4200.92	
Axis P3807-PVE 180° Panoramic Camera	01048-004	4	1419.99	5679.96		1449.00	5796.00		1450.54	5802.16	
Axis T94P01B corner camera bracket for P3807-PVE	5504-711	4	89.00	356.00		89.00	356.00		89.85	359.40	
					\$ 14,855.92			\$ 15,043.04			\$ 15,082.60
Grand Total					\$ 69,843.50			\$ 71,055.68			\$ 71,484.00