

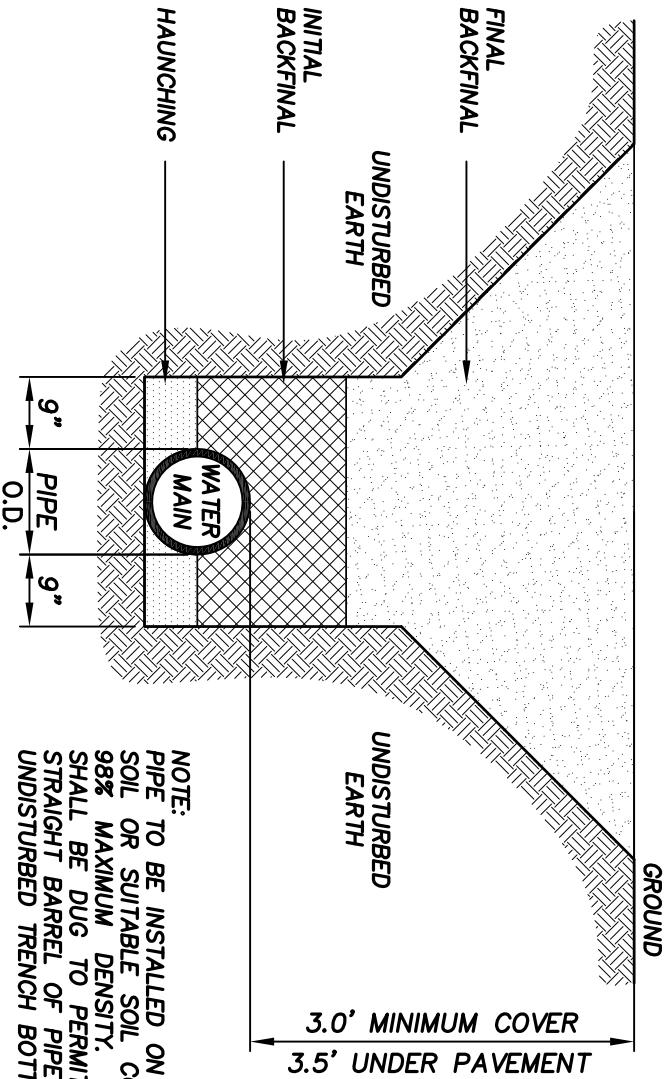


BRUNSWICK-GLYNN COUNTY

JOINT WATER & SEWER
COMMISSION

1703 Gloucester Street
Brunswick, Georgia 31520
Website: www.bgjwsc.org

Phone: (912) 261-7110
Fax: (912) 261-7178



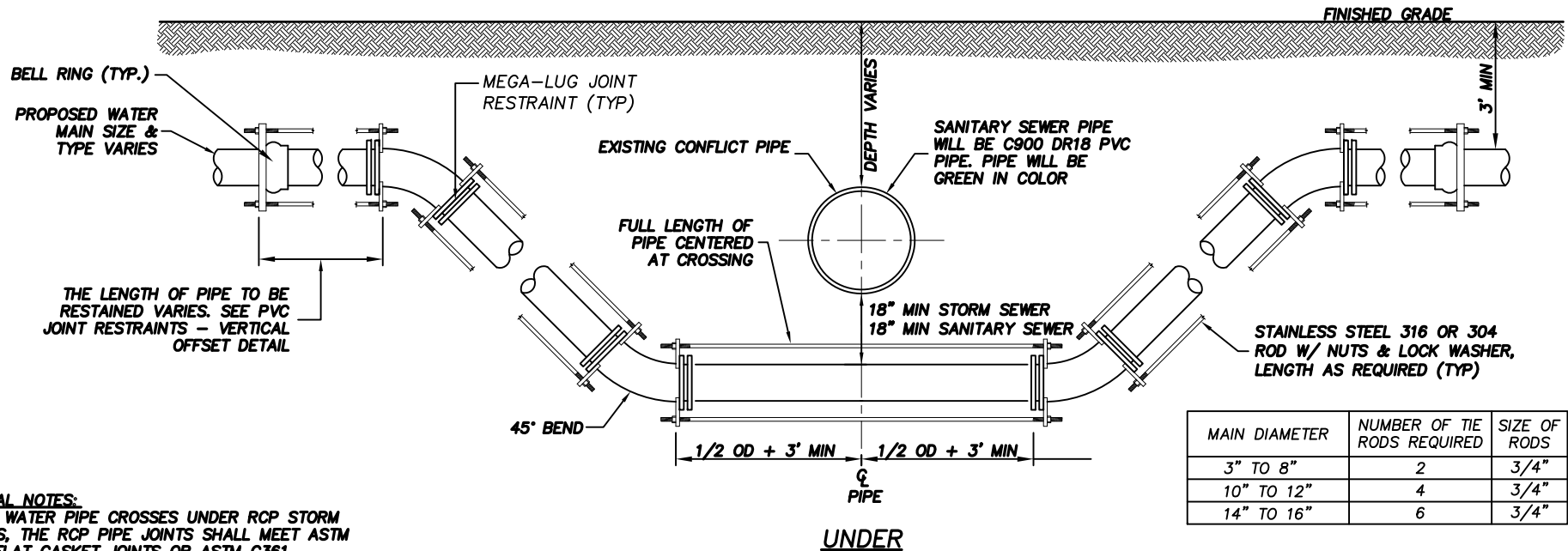
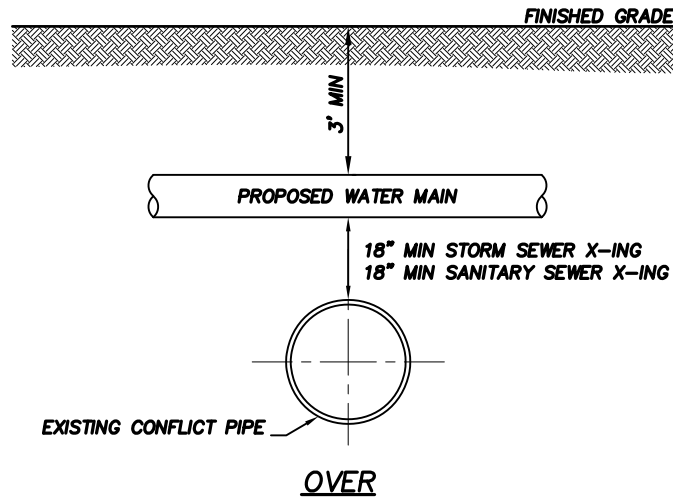
NOTE:
 PIPE TO BE INSTALLED ON UNDISTURBED SOIL OR SUITABLE SOIL COMPACTED TO 98% MAXIMUM DENSITY. BELL HOLE SHALL BE DUG TO PERMIT THE ENTIRE STRAIGHT BARREL OF PIPE TO REST ON UNDISTURBED TRENCH BOTTOM.
 STONES FOUND IN THE TRENCH SHALL BE REMOVED FOR A DEPTH OF AT LEAST SIX(6) INCHES BELOW THE BOTTOM OF THE PIPE.

NOT TO SCALE

PRESSURE PIPE TRENCH DETAIL

JWSC STANDARD DETAIL 2-1

Date: JUNE 2017



GENERAL NOTES:
WHERE WATER PIPE CROSSES UNDER RCP STORM SEWERS, THE RCP PIPE JOINTS SHALL MEET ASTM C433 FLAT GASKET JOINTS OR ASTM C361 "O-RING" JOINTS WITHIN 10 FEET OF THE WATER MAIN

NOT TO SCALE



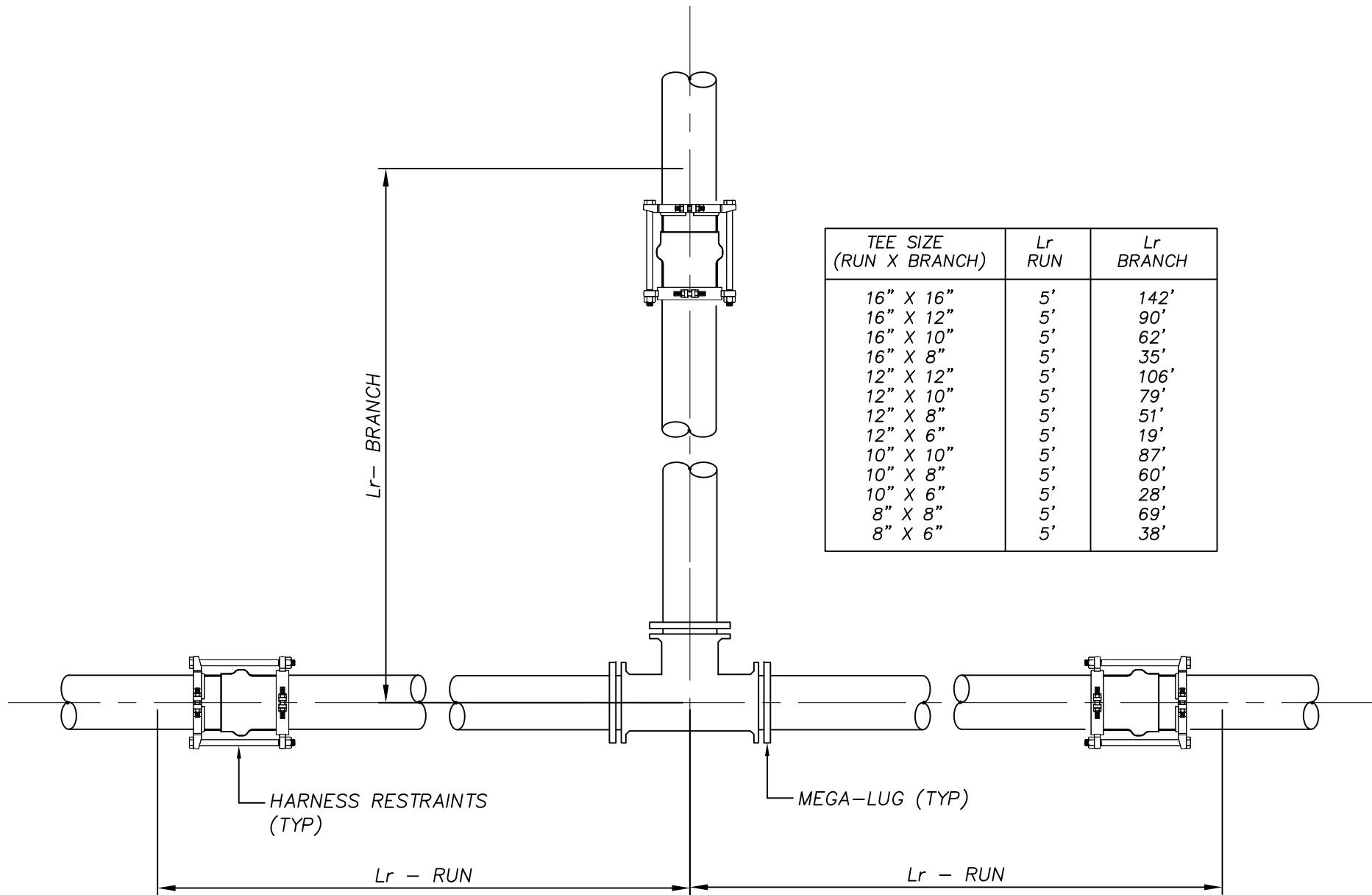
BRUNSWICK-GLYNN COUNTY
JOINT WATER & SEWER
COMMISSION

1703 Gloucester Street Phone: (912) 261-7110
Brunswick, Georgia 31520 Fax: (912) 261-7178
Website: www.bgjwsc.org

UTILITY CONFLICT DETAIL

JWSC STANDARD DETAIL 2-2

Date: JULY 2020



| TEE SIZE (RUN X BRANCH) | Lr RUN | Lr BRANCH |
|----------------------------|-----------|--------------|
| 16" X 16" | 5' | 142' |
| 16" X 12" | 5' | 90' |
| 16" X 10" | 5' | 62' |
| 16" X 8" | 5' | 35' |
| 12" X 12" | 5' | 106' |
| 12" X 10" | 5' | 79' |
| 12" X 8" | 5' | 51' |
| 12" X 6" | 5' | 19' |
| 10" X 10" | 5' | 87' |
| 10" X 8" | 5' | 60' |
| 10" X 6" | 5' | 28' |
| 8" X 8" | 5' | 69' |
| 8" X 6" | 5' | 38' |

NOT TO SCALE



**BRUNSWICK-GLYNN COUNTY
JOINT WATER & SEWER
COMMISSION**

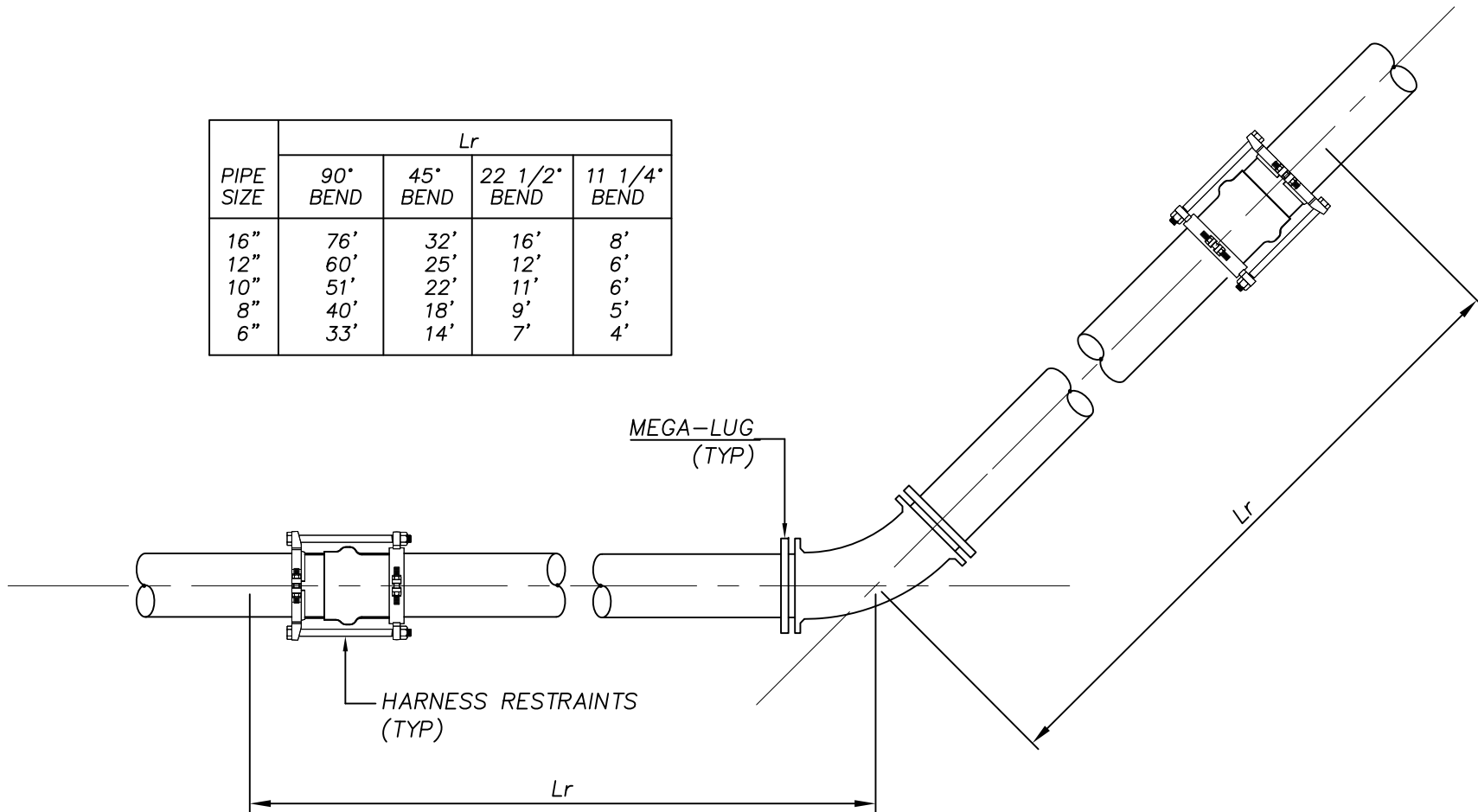
700 Gloucester Street, Suite 300 Phone: (912) 261-7110
 Brunswick, Georgia 31520 Fax: (912) 261-7178
 Website: www.bgjwsc.org

PVC JOINTS RESTRAINTS - TEE

JWSC STANDARD DETAIL 2-3

Date: AUGUST 2011

| PIPE SIZE | Lr | | | |
|-----------|----------|----------|--------------|--------------|
| | 90° BEND | 45° BEND | 22 1/2° BEND | 11 1/4° BEND |
| 16" | 76' | 32' | 16' | 8' |
| 12" | 60' | 25' | 12' | 6' |
| 10" | 51' | 22' | 11' | 6' |
| 8" | 40' | 18' | 9' | 5' |
| 6" | 33' | 14' | 7' | 4' |



NOT TO SCALE



BRUNSWICK-GLYNN COUNTY
JOINT WATER & SEWER
COMMISSION

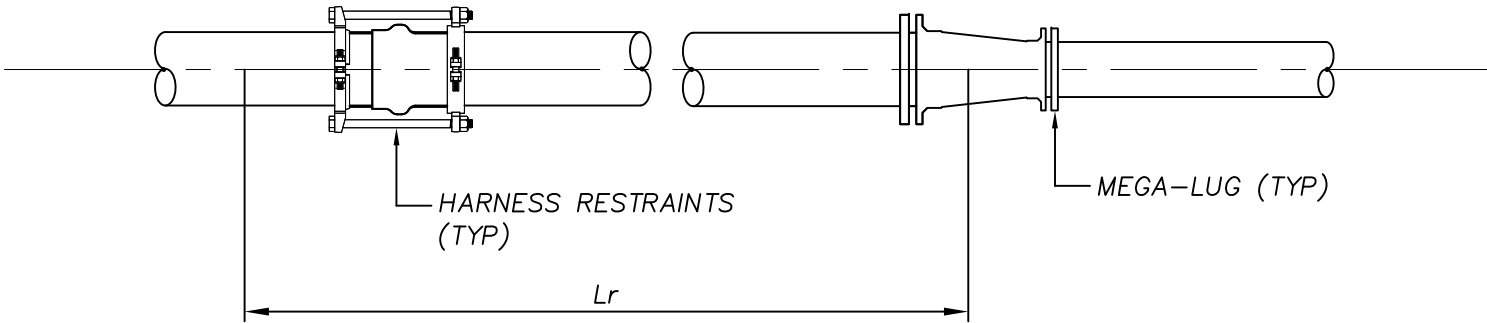
700 Gloucester Street, Suite 300 Phone: (912) 261-7110
Brunswick, Georgia 31520 Fax: (912) 261-7178
Website: www.bgjwsc.org

PVC JOINTS RESTRAINTS - HORIZONTAL BEND

JWSC STANDARD DETAIL 2-4

Date: AUGUST 2011

| REDUCER SIZE | Lr |
|--------------|------|
| 16" X 12" | 75' |
| 16" X 10" | 104' |
| 16" X 8" | 128' |
| 16" X 6" | 147' |
| 12" X 10" | 40' |
| 12" X 8" | 72' |
| 12" X 6" | 99' |
| 10" X 8" | 39' |
| 10" X 6" | 71' |
| 8" X 6" | 41' |
| 8" X 4" | 69' |
| 6" X 4" | 38' |



NOT TO SCALE



**BRUNSWICK-GLYNN COUNTY
JOINT WATER & SEWER
COMMISSION**

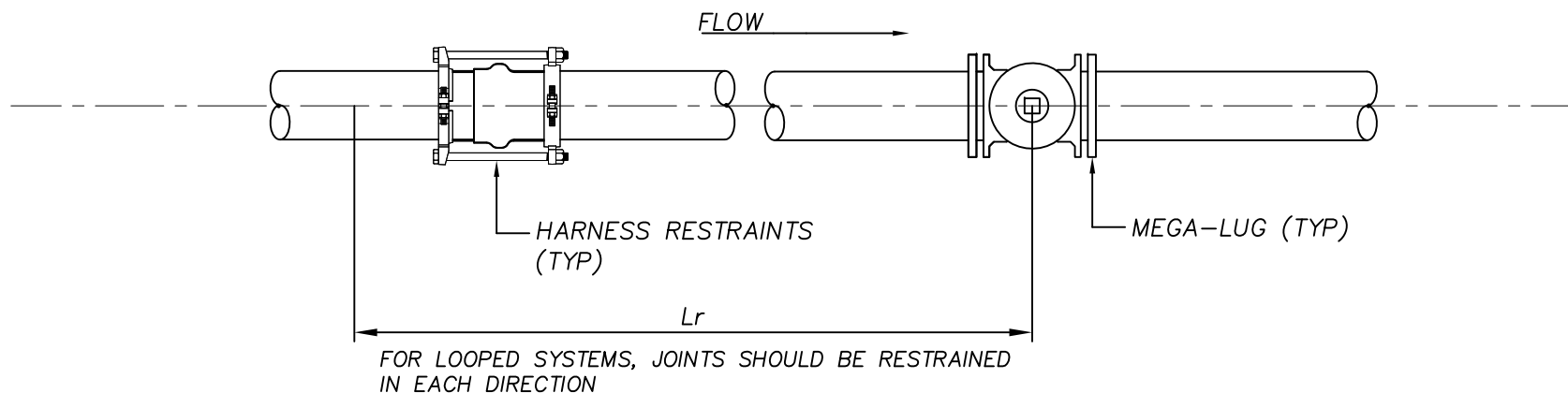
700 Gloucester Street, Suite 300 Phone: (912) 261-7110
Brunswick, Georgia 31520 Fax: (912) 261-7178
Website: www.bgjwsc.org

PVC JOINTS RESTRAINTS - REDUCER

JWSC STANDARD DETAIL 2-5

Date: AUGUST 2011

| LINE SIZE | Lr |
|-----------|------|
| 16" | 175' |
| 12" | 136' |
| 10" | 115' |
| 8" | 96' |
| 6" | 74' |
| 4" | 52' |



NOT TO SCALE



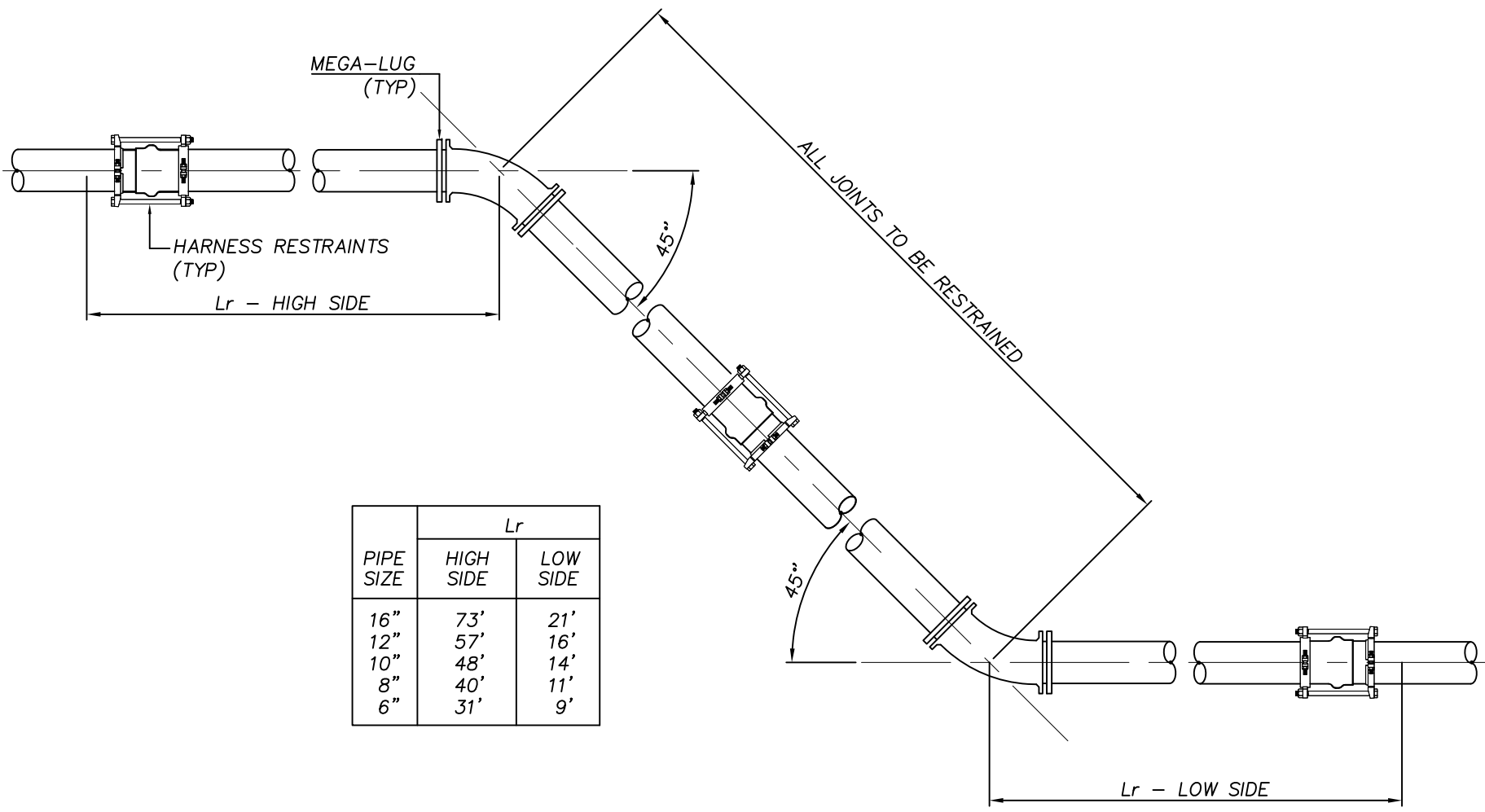
**BRUNSWICK-GLYNN COUNTY
JOINT WATER & SEWER
COMMISSION**

700 Gloucester Street, Suite 300 Phone: (912) 261-7110
Brunswick, Georgia 31520 Fax: (912) 261-7178
Website: www.bgjwsc.org

PVC JOINTS RESTRAINTS - IN-LINE VALVE

JWSC STANDARD DETAIL 2-6

Date: AUGUST 2011



| PIPE SIZE | Lr | |
|-----------|-----------|----------|
| | HIGH SIDE | LOW SIDE |
| 16" | 73' | 21' |
| 12" | 57' | 16' |
| 10" | 48' | 14' |
| 8" | 40' | 11' |
| 6" | 31' | 9' |

NOT TO SCALE



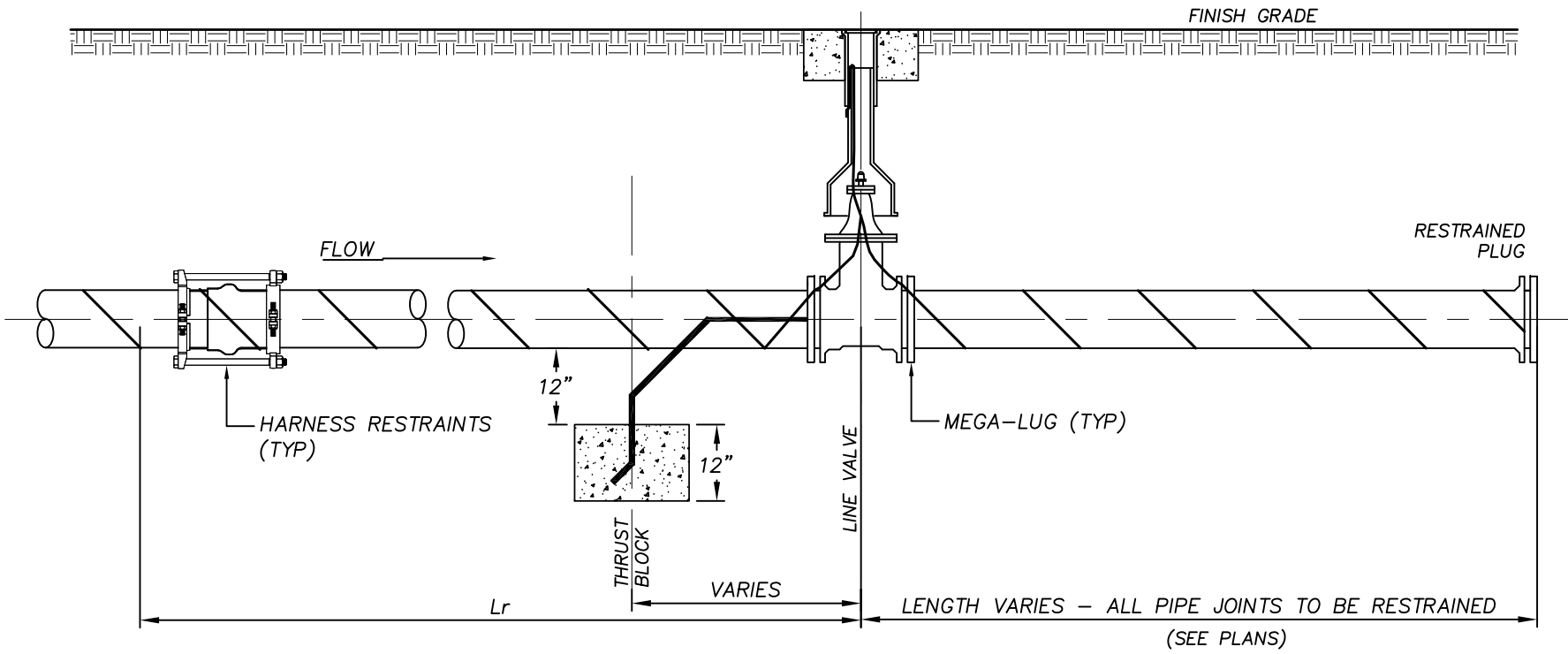
**BRUNSWICK-GLYNN COUNTY
JOINT WATER & SEWER
COMMISSION**

700 Gloucester Street, Suite 300 Phone: (912) 261-7110
 Brunswick, Georgia 31520 Fax: (912) 261-7178
 Website: www.bgjwsc.org

**PVC JOINTS RESTRAINTS - VERTICAL
OFFSET**

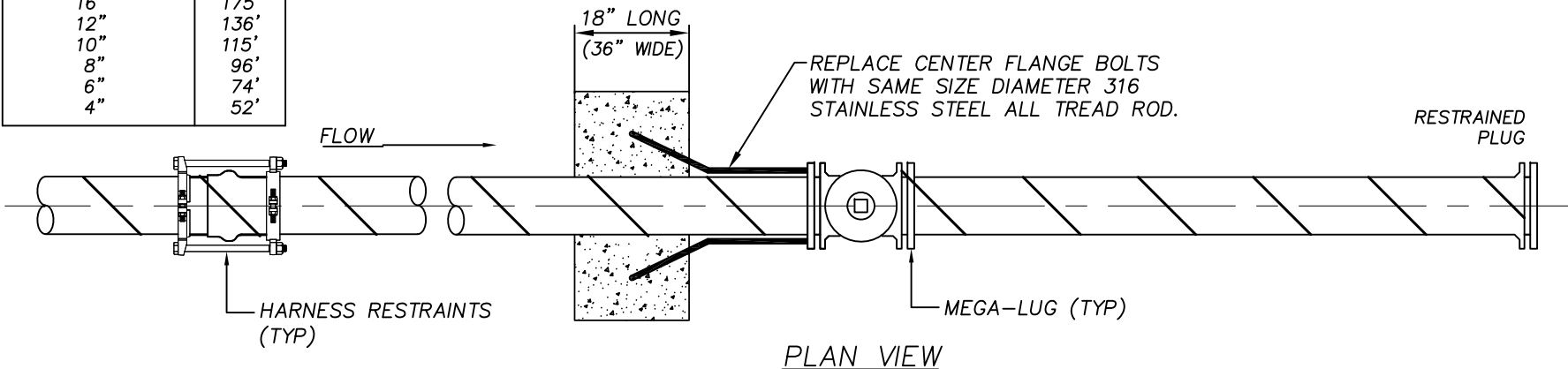
JWSC STANDARD DETAIL 2-7

Date: AUGUST 2011



PROFILE VIEW

| LINE SIZE | Lr |
|-----------|------|
| 16" | 175' |
| 12" | 136' |
| 10" | 115' |
| 8" | 96' |
| 6" | 74' |
| 4" | 52' |



PLAN VIEW

NOT TO SCALE



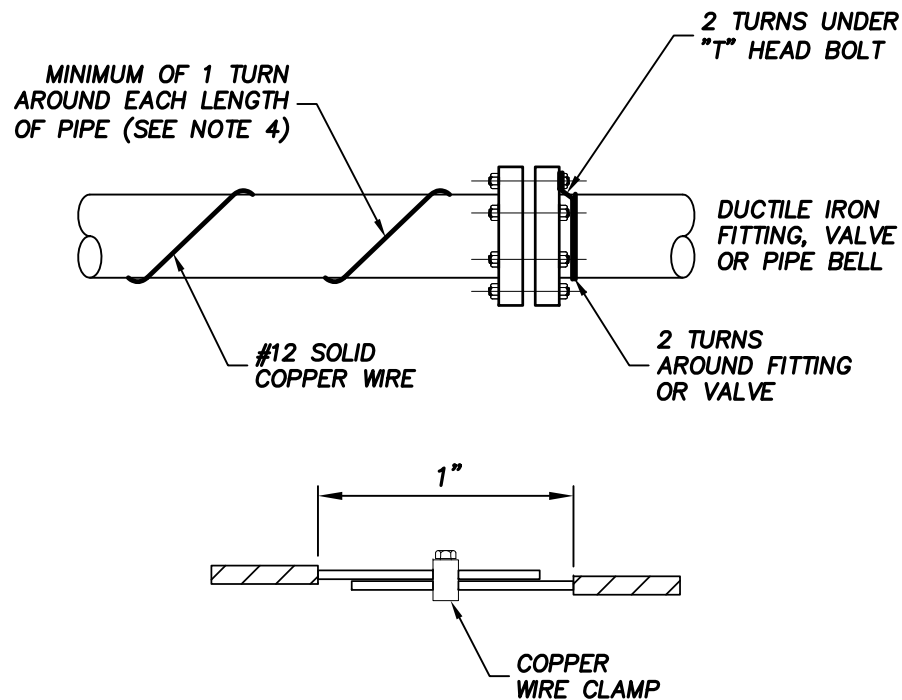
BRUNSWICK-GLYNN COUNTY
JOINT WATER & SEWER
COMMISSION

1703 Gloucester Street Phone: (912) 261-7110
Brunswick, Georgia 31520 Fax: (912) 261-7178
Website: www.bgjwsc.org

PVC JOINTS RESTRAINTS - TEMPORARY DEAD END

JWSC STANDARD DETAIL 2-8

Date: DECEMBER 2017



NOTE:

1. USE #12 AWG SOLID PLASTIC COATED COPPER WIRE.
2. STRIP 2" OF COATING & WRAP WIRE 2 TURNS UNDER "T" HEAD BOLT ON TOP OF DUCTILE IRON FITTING (VALVE). NEXT WRAP WIRE 2 TURNS AROUND BELL OF FITTING (VALVE) AND WIND WITH A CONTINUOUS LENGTH OF AT LEAST 4 WRAPS PER LENGTH OF PVC PIPE TO THE NEXT DUCTILE IRON FITTING. TERMINATE AT FITTING IN A SIMILAR MANNER AS NOTED ABOVE.
3. ALL SPLICES MUST BE MADE BY USING COPPER WIRE SPLICE, "U" BOLT ASSEMBLIES AND THEN WRAPPING WITH ELECTRICAL TAPE.
4. IN LIEU OF "WRAPPING" TRACER WIRE AROUND PVC PIPE, WIRE MAY BE STRUNG ALONG THE TOP OF PIPE, PROVIDED IT IS TAPED TO THE PIPE EVERY 5'-0" TO INSURE ACCURATE POSITION MAINTAINED DURING BACKFILL.

NOT TO SCALE



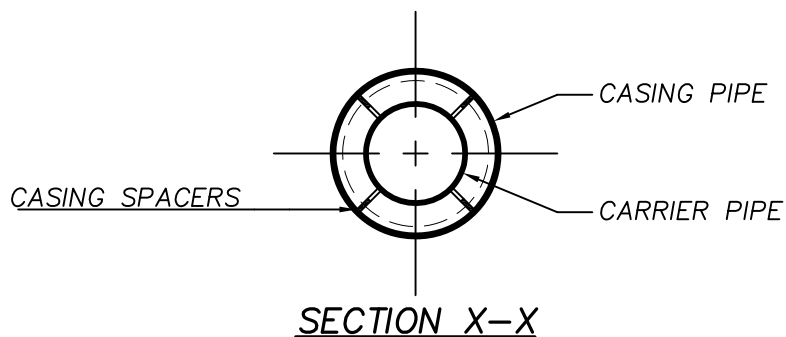
BRUNSWICK-GLYNN COUNTY
JOINT WATER & SEWER
COMMISSION

700 Gloucester Street, Suite 300 Phone: (912) 261-7110
Brunswick, Georgia 31520 Fax: (912) 261-7178
Website: www.bgjwsc.org

TRACER WIRE INSTALLATION

JWSC STANDARD DETAIL 2-9

Date: AUGUST 2011

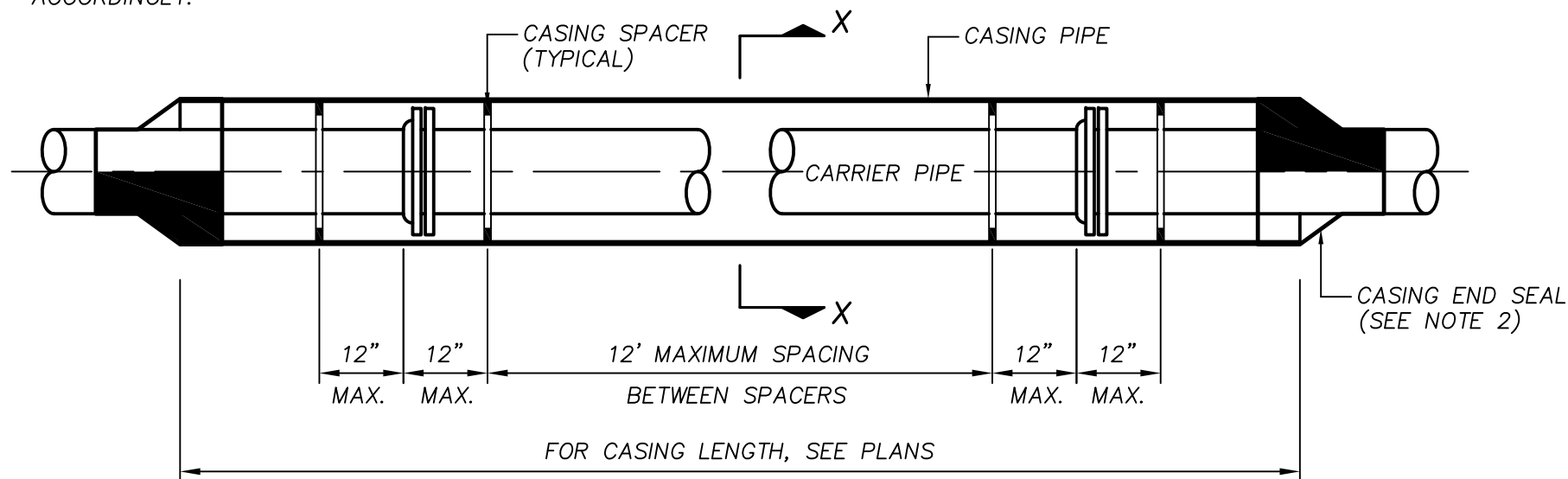


| CARRIER PIPE DIAMETER (INCHES) | CASING PIPE DIAMETER (INCHES) | WALL THICKNESS* (INCHES) |
|--------------------------------|-------------------------------|--------------------------|
| 6 | 12 | 0.375 |
| 8 | 16 | 0.375 |
| 10 | 16 | 0.375 |
| 12 | 20 | 0.375 |
| 14 | 22 | 0.375 |
| 16 | 24 | 0.375 |
| 18 | 30 | 0.375 |
| 20 | 30 | 0.375 |
| 24 | 36 | 0.375 |
| 30 | 42 | 0.375 |

* SEE NOTE 2

GENERAL NOTES:

1. DETAIL SHOWN IS FOR CITY AND COUNTY ROADWAY CROSSINGS.
2. INSTALLATIONS UNDER STATE ROADS AND RAILROADS MAY HAVE REQUIREMENTS DIFFERENT FROM THOSE SHOWN. SUCH INSTALLATIONS SHALL MEET ALL APPLICABLE REQUIREMENTS OF THE GEORGIA DEPARTMENT OF TRANSPORTATION OR THE PARTICULAR RAILROAD INVOLVED.
3. SEE BGJWSC STANDARD CONSTRUCTION SPECIFICATIONS FOR ADDITIONAL INFORMATION.
4. CASING SIZE SHOWN ARE FOR DUCTILE IRON PIPE. FOR PVC PIPE AND HARNESS RESTRAINTS, ADJUST CASING PIPE DIAMETER ACCORDINGLY.



NOT TO SCALE



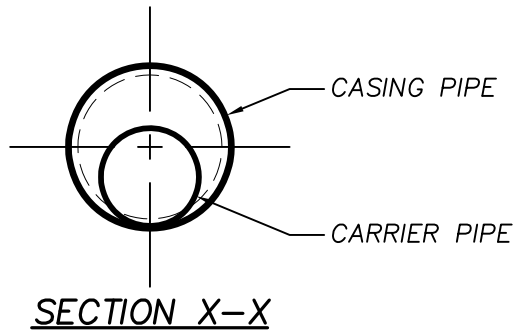
BRUNSWICK-GLYNN COUNTY
JOINT WATER & SEWER
COMMISSION

700 Gloucester Street, Suite 300 Phone: (912) 261-7110
Brunswick, Georgia 31520 Fax: (912) 261-7178
Website: www.bgjwsc.org

STEEL CASING AND CARRIER PIPE INSTALLATION

JWSC STANDARD DETAIL 2-10

Date: AUGUST 2011

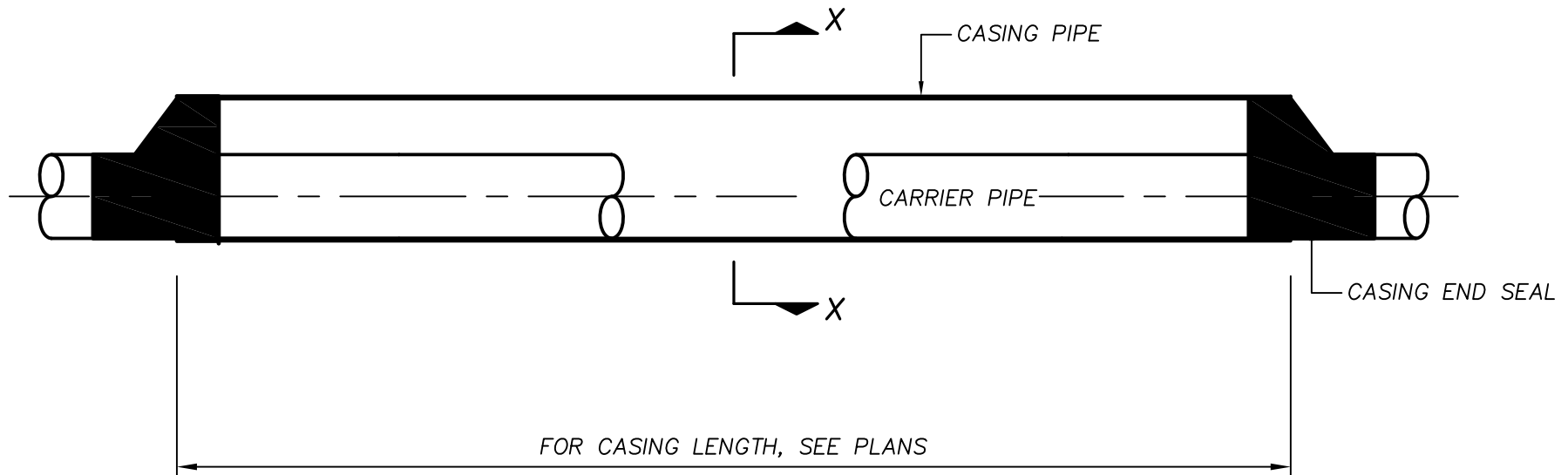


| CARRIER PIPE DIAMETER (INCHES) | CARRIER PIPE OD DIAMETER (INCHES) | CASING PIPE DIAMETER (INCHES) | CASING PIPE ID DIAMETER (INCHES) | WALL THICKNESS* (INCHES) |
|--------------------------------|-----------------------------------|-------------------------------|----------------------------------|--------------------------|
| 6 | 6.90 | 10 | 9.79 | 0.620 |
| 8 | 9.05 | 12 | 11.65 | 0.720 |
| 10 | 11.10 | 14 | 13.50 | 0.850 |
| 12 | 13.20 | 16 | 15.35 | 0.970 |
| 14 | 15.30 | 18 | 17.20 | 1.080 |
| 16 | 17.40 | 24 | 22.76 | 1.430 |
| 18 | 19.50 | 24 | 22.76 | 1.430 |
| 20 | 21.60 | 30* | 28.77 | 1.520 |
| 24 | 25.80 | 30* | 28.77 | 1.520 |
| 30* | 32.00 | 36* | 34.43 | 1.820 |

* DR 21

GENERAL NOTES:

1. DETAIL SHOWN IS FOR STATE ROADWAY CROSSINGS.
2. INSTALLATIONS UNDER CITY OF BRUNSWICK AND GLYNN COUNTY ROADS MAY HAVE REQUIREMENTS DIFFERENT FROM THOSE SHOWN. INSTALLATIONS SHALL MEET ALL APPLICABLE REQUIREMENTS OF THE GEORGIA DEPARTMENT OF TRANSPORTATION.
3. SEE BGJWSC STANDARD CONSTRUCTION SPECIFICATIONS FOR ADDITIONAL INFORMATION.
4. CASING SIZES SHOWN ARE FOR C-905 FPVC. CARRIER PIPE SIZES ARE FOR C-905 FPVC DR18 UNLESS OTHERWISE NOTED. CASINGS AND CARRIER PIPE SHALL BE BLUE OR GREEN IN COLOR.



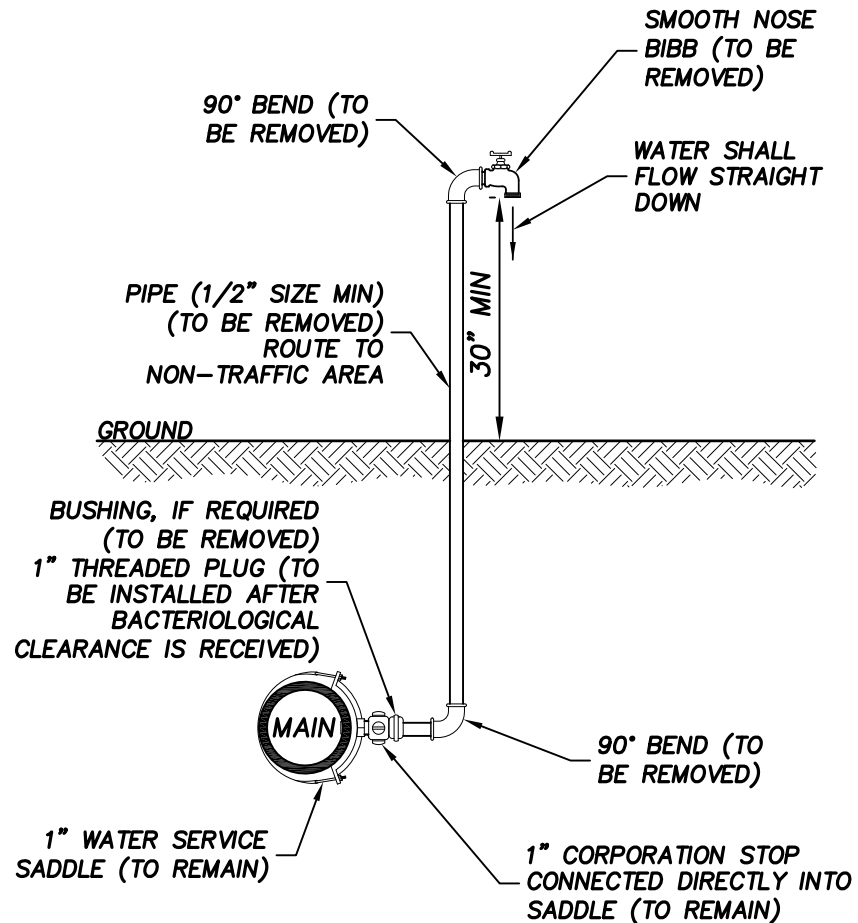
**BRUNSWICK-GLYNN COUNTY
JOINT WATER & SEWER
COMMISSION**

1703 Gloucester Street Phone: (912) 261-7110
Brunswick, Georgia 31520 Fax: (912) 261-7178
Website: www.bgjwsc.org

FPVC CASING AND C905 CARRIER PIPE INSTALLATION

JWSC STANDARD DETAIL 2-10A

Date: JANUARY 2017



NOTE:

1. LOCATION OF SAMPLE POINT BIBB SHALL BE ROUTED TO NON-TRAFFIC AREAS, IF REQUIRED.
2. THE CONTRACTOR SHALL BE RESPONSIBLE FOR THE REMOVAL OF ALL TEMPORARY PIPING & FITTINGS, AS NOTED, AFTER BACTERIOLOGICAL CLEARANCE IS RECEIVED.
3. PIPE AND FITTINGS SHALL BE PVC (SCH 40) OR GALVANIZED.

NOT TO SCALE



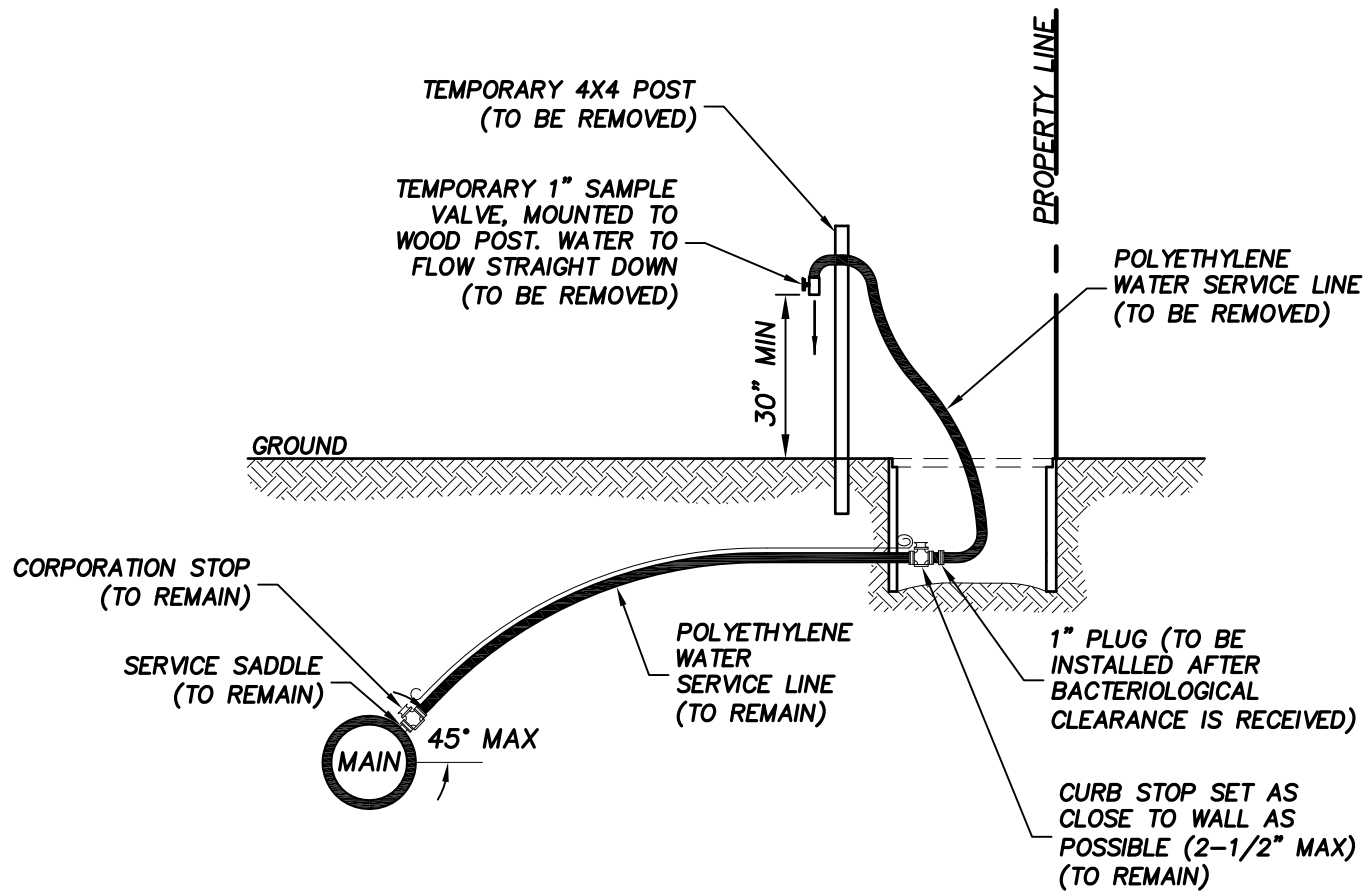
**BRUNSWICK-GLYNN COUNTY
JOINT WATER & SEWER
COMMISSION**

700 Gloucester Street, Suite 300 Phone: (912) 261-7110
Brunswick, Georgia 31520 Fax: (912) 261-7178
Website: www.bgjwsc.org

TEMPORARY SAMPLE TAP

JWSC STANDARD DETAIL 2-11

Date: AUGUST 2011



NOTE:

1. WATER SERVICE CONNECTION MAY BE USED FOR TEMPORARY SAMPLE TAP IF LOCATED NEAR REQUIRED SAMPLING POINT.
2. WATER SERVICE TO BE INSTALLED PER "WATER SERVICE DETAIL"
3. LOCATION OF SAMPLE POINT BIBB SHALL BE ROUTED TO NON-TRAFFIC AREAS IF REQUIRED.
4. THE CONTRACTOR SHALL BE RESPONSIBLE FOR THE REMOVAL OF ALL TEMPORARY PIPING & FITTINGS, AS NOTED, AFTER BACTERIOLOGICAL CLEARANCE IS RECEIVED.



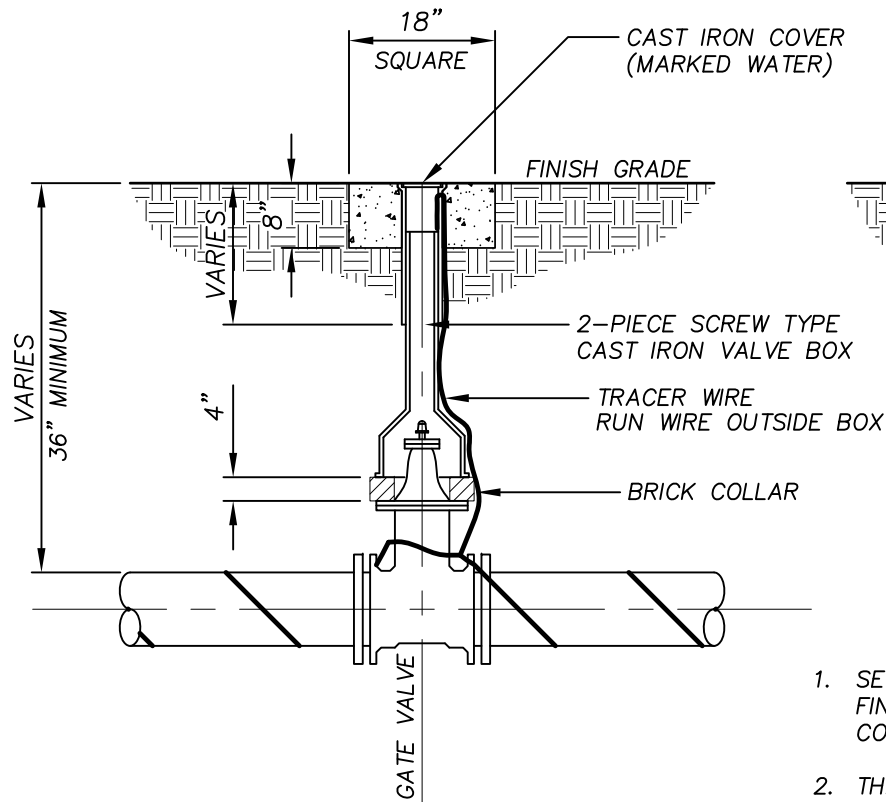
BRUNSWICK-GLYNN COUNTY
JOINT WATER & SEWER
COMMISSION

700 Gloucester Street, Suite 300 Phone: (912) 261-7110
Brunswick, Georgia 31520 Fax: (912) 261-7178
Website: www.bgjwsc.org

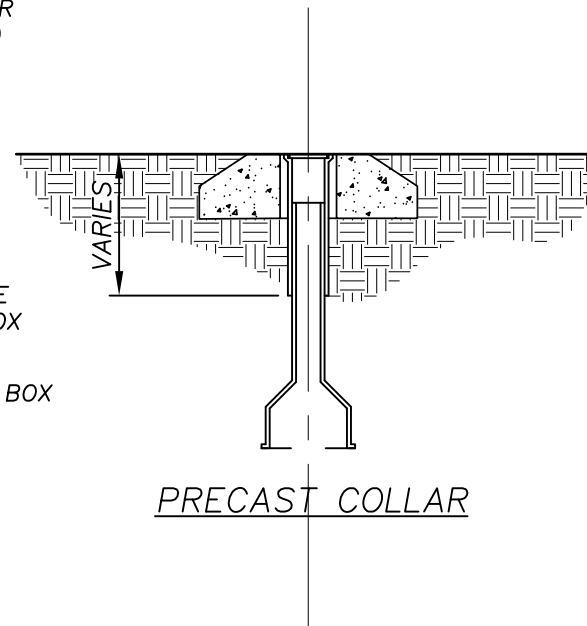
TEMPORARY SAMPLE TAP USING WATER SERVICE

JWSC STANDARD DETAIL 2-12

Date: AUGUST 2011



POURED-IN-PLACE COLLAR



1. SET TOP OF CONCRETE COLLAR FLUSH WITH FINISH GRADE (OR LANDSCAPING). NO CONCRETE COLLAR IS REQUIRED IN PAVED AREAS.
2. THE VALVE BOX SHALL NOT REST ON TOP OF VALVE.
3. PRECAST CONCRETE COLLARS MAY BE USED UPON APPROVAL OF THE BGJWSC REPRESENTATIVE. SEE ALTERNATE DETAIL ABOVE.

NOT TO SCALE



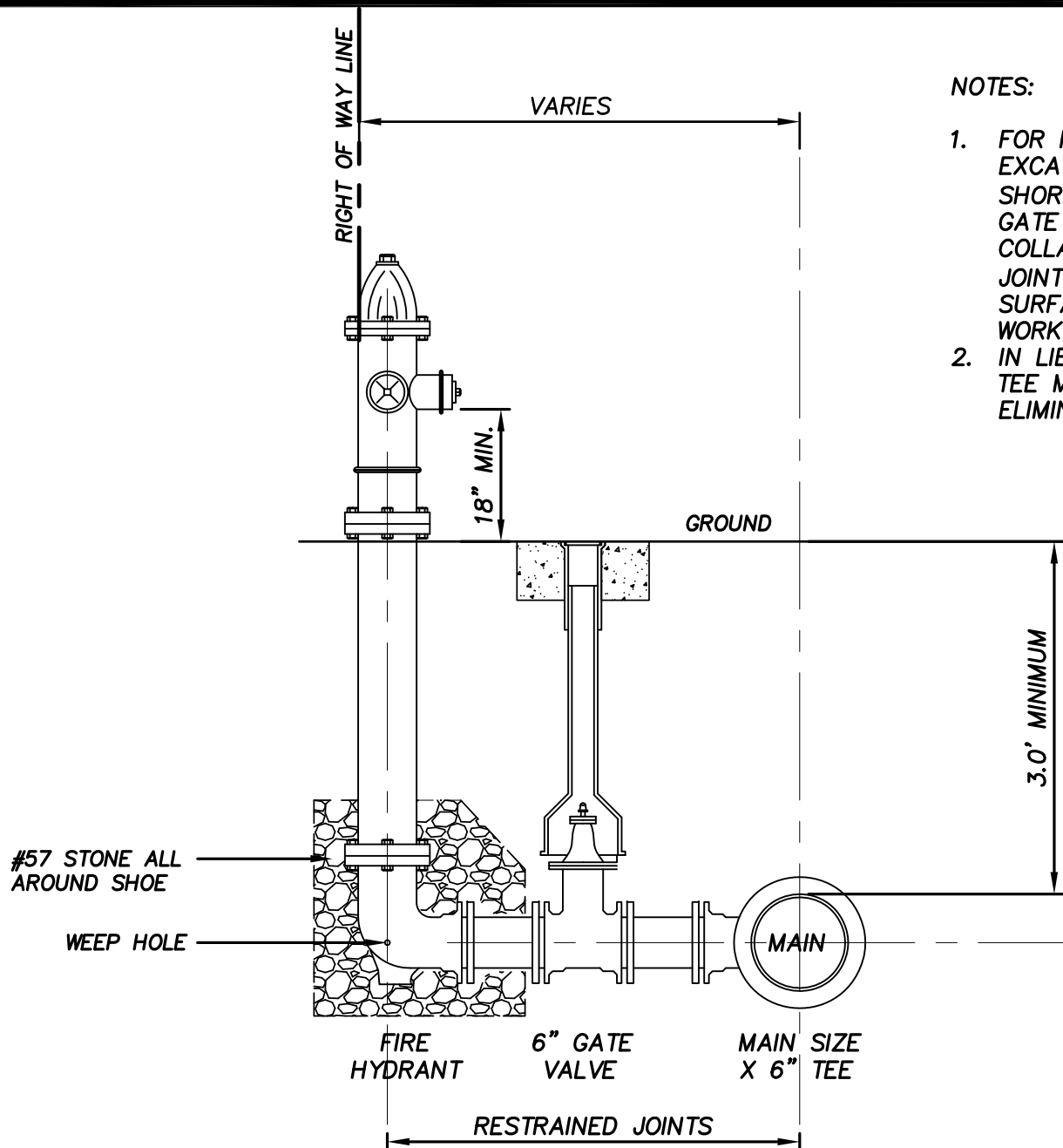
BRUNSWICK-GLYNN COUNTY
JOINT WATER & SEWER
COMMISSION

700 Gloucester Street, Suite 300 Phone: (912) 261-7110
Brunswick, Georgia 31520 Fax: (912) 261-7178
Website: www.bgjwsc.org

Date: AUGUST 2011

WATER VALVE DETAIL

JWSC STANDARD DETAIL 2-13



NOTES:

1. FOR FIRE HYDRANT ASSEMBLIES INCLUDE EXCAVATION, BACKFILL, NECESSARY SHORING AND SHEETING, 6" LEAD PIPE, 6" GATE VALVE AND VALVE BOX, VALVE BOX COLLAR, FIRE HYDRANT, GRAVEL, TIE ROD JOINT RESTRAINTS (NOT SHOWN), COMPLETE SURFACE RESTORATION AND ALL OTHER WORK AND APPURTENANCES REQUIRED.
2. IN LIEU OF AN ALL MJ TEE, A HYDRANT TEE MAY BE USED AND SPOOL PIECE ELIMINATED.

NOT TO SCALE



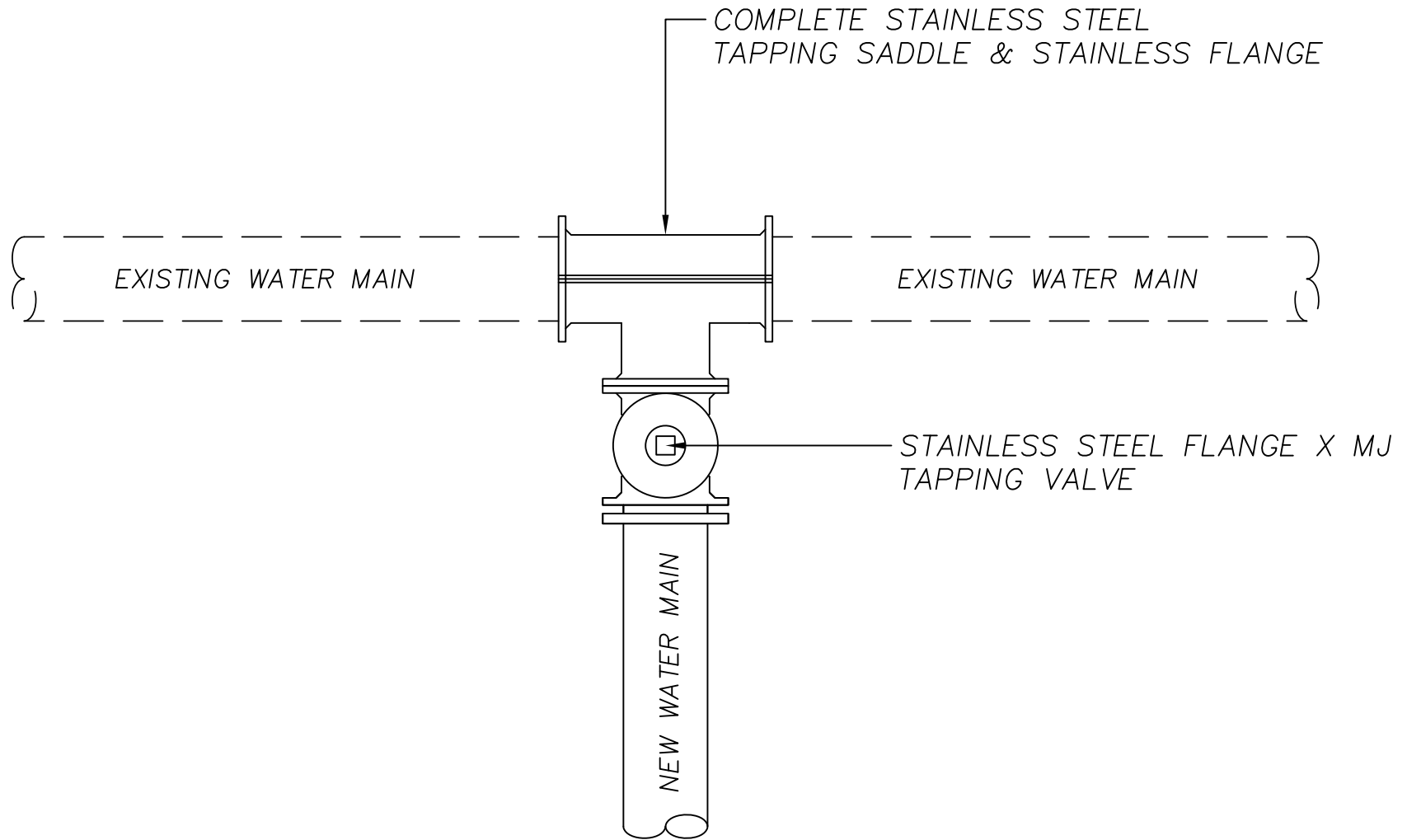
**BRUNSWICK-GLYNN COUNTY
JOINT WATER & SEWER
COMMISSION**

700 Gloucester Street, Suite 300 Phone: (912) 261-7110
Brunswick, Georgia 31520 Fax: (912) 261-7178
Website: www.bgjwsc.org

FIRE HYDRANT DETAIL

JWSC STANDARD DETAIL 2-14

Date: AUGUST 2011



NOT TO SCALE



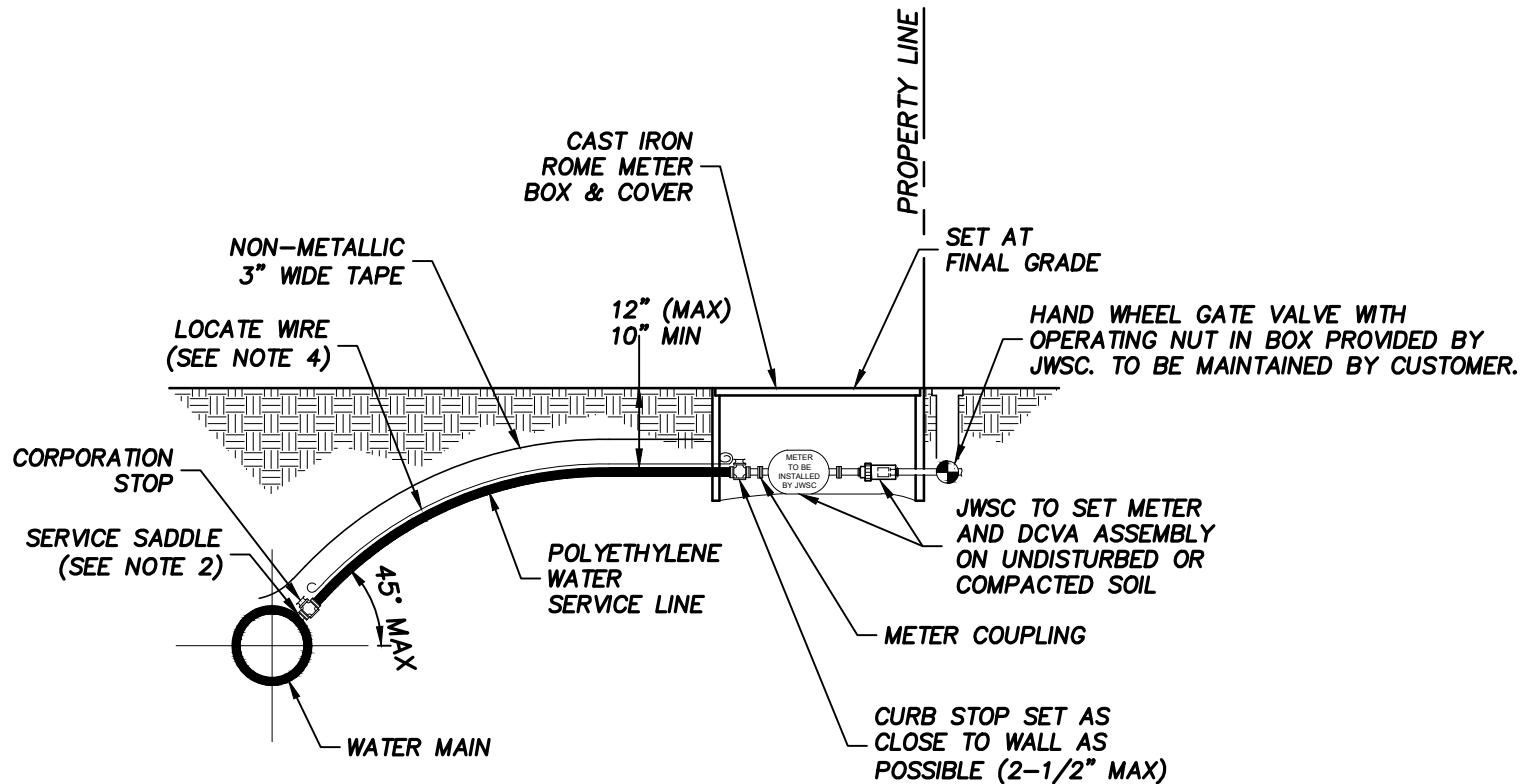
BRUNSWICK-GLYNN COUNTY
JOINT WATER & SEWER
COMMISSION

1703 Gloucester Street Phone: (912) 261-7110
Brunswick, Georgia 31520 Fax: (912) 261-7178
Website: www.bgjwsc.org

CONNECTION TO EXISTING WATER MAIN

JWSC STANDARD DETAIL 2-15

Date: DECEMBER 2017



NOTES:

1. JWSC TO INSTALL METER AND METER BOX. METER IS TO BE PURCHASED THROUGH JWSC.
2. ALL FITTINGS IN LATERAL SHALL BE COMPRESSION TYPE.
3. A MINIMUM OF TWO FULL THREADS ARE REQUIRED FOR TAPPING SLEEVE TO GO INTO THE PIPE WALL.
4. INSULATED SINGLE STAND COPPER WIRE SHALL BE STRAPPED TO THE PIPE AND ATTACHED TO THE CORPORATION AND CURB STOPS.
5. INSTALL PVC PLUG IN ALL CURB STOPS IF WATER SERVICE IS "NOT IN USE" (NO METER IS INSTALLED).
6. WATER SERVICES SERVING VACANT LOTS (SERVICE NOT IN USE), SHALL INCLUDE A "W" CUT INTO THE CURB. FOR NEW DEVELOPMENT AREAS WHERE THE WATER SERVICE IS "NOT IN USE", A #4 REBAR STAKE PAINTED BLUE. BLUE STAKE SHALL BE VISIBLE WITH 4" TO 6" ABOVE GRADE.
7. POLYETHYLENE WATER SERVICE LINE SHALL BE PERPENDICULAR TO THE MAIN UNLESS APPROVED OTHERWISE BY BGJWSC.
8. METER SIZE WILL BE BASED ON END USERS REQUIREMENTS.
9. POTABLE TAP TO BE SEPARATE FROM IRRIGATION AND FIRE SPRINKLER LINES.

NOT TO SCALE



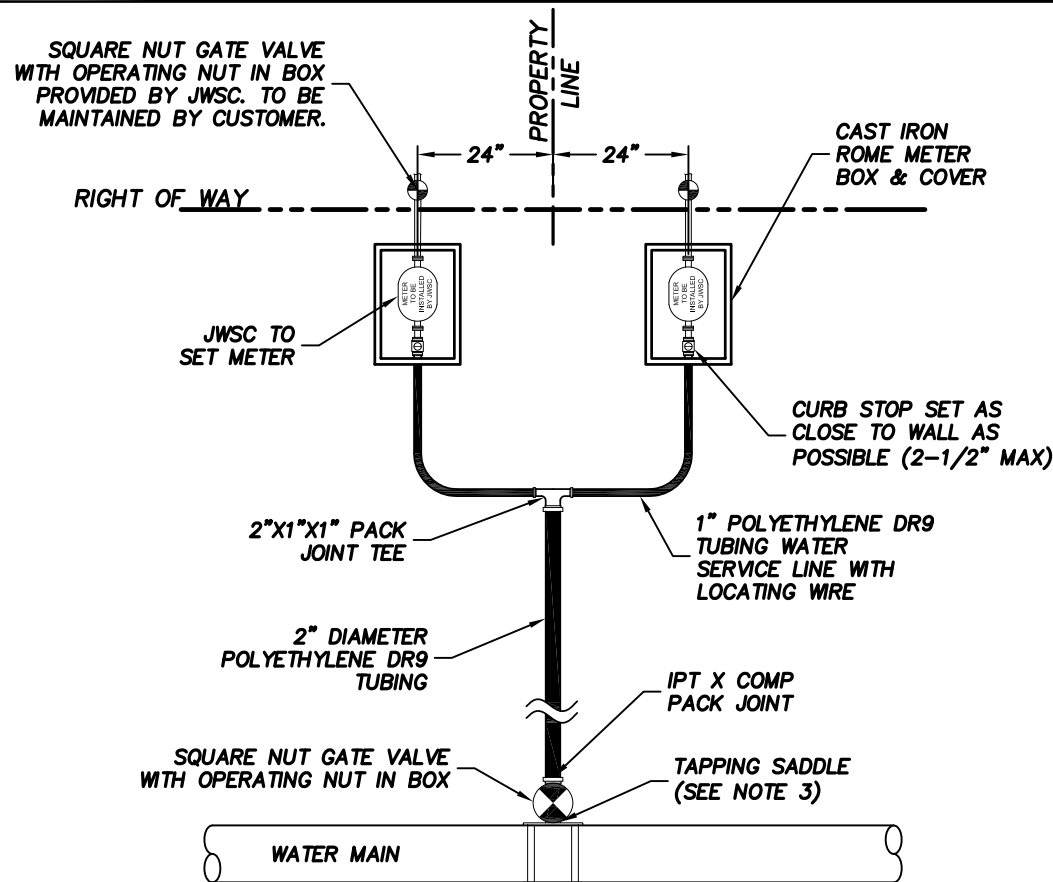
BRUNSWICK-GLYNN COUNTY
JOINT WATER & SEWER
COMMISSION

1703 Gloucester Street Phone: (912) 261-7110
Brunswick, Georgia 31520 Fax: (912) 261-7178
Website: www.bgjwsc.org

SINGLE WATER & IRRIGATION SERVICE DETAIL - (2" & SMALLER)

JWSC STANDARD DETAIL 2-16

Date: AUG 2020



NOTE:

1. METER BOX AND CURB STOP TO BE FURNISHED AND INSTALLED BY JWSC.
2. ALL FITTINGS IN LATERAL SHALL BE COMPRESSION TYPE.
3. A MINIMUM OF TWO FULL THREADS ARE REQUIRED FOR THE BRASS NIPPLE TO GO INTO THE TAPPING SADDLE.
4. INSULATED SINGLE STAND COPPER WIRE SHALL BE STRAPPED TO THE PIPE AND ATTACHED TO THE CORPORATION AND CURB STOPS.
5. INSTALL PVC PLUG IN ALL CURB STOPS IF WATER SERVICE IS "NOT IN USE" (NO METER IS INSTALLED).
6. WATER SERVICES SERVING VACANT LOTS (SERVICE NOT IN USE), SHALL INCLUDE A "W" CUT INTO THE CURB. FOR NEW DEVELOPMENT AREAS WHERE THE WATER SERVICE IS "NOT IN USE", A #4 REBAR STAKE PAINTED BLUE.
7. WATER SERVICE LINE SHALL BE PERPENDICULAR TO THE MAIN UNLESS APPROVED OTHERWISE BY BGJWSC.

NOT TO SCALE



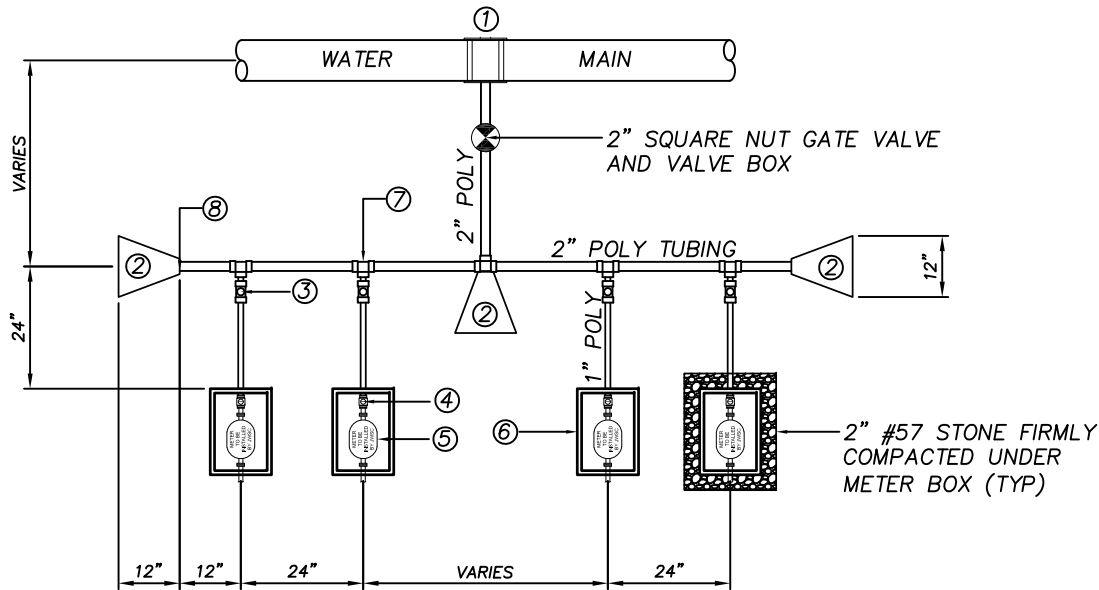
**BRUNSWICK-GLYNN COUNTY
JOINT WATER & SEWER
COMMISSION**

1703 Gloucester Street Phone:(912) 261-7110
Brunswick, Georgia 31520 Fax: (912) 261-7178
Website: www.bgjwsc.org

DOUBLE WATER SERVICE DETAIL

JWSC STANDARD DETAIL 2-17

Date: JUNE 2018



| BILL OF MATERIALS | |
|--|---|
| 1 | 2" DIA. SSTL TAPPING SADDLE OR TEE WITH REDUCER (SEE NOTE 1) |
| 2 | CONCRETE BLOCKING |
| 3 | 1" CORPORATION STOP (TYP) |
| 4 | CURB STOP SET AS CLOSE TO WALL AS POSSIBLE (TYP) (SEE NOTE 2) |
| 5 | JWSC TO SET METER |
| 6 | ROME CAST IRON METER BOX AND COVER (TYP) (SEE NOTE 2) |
| 7 | 2"x1" SADDLE (TYP) |
| 8 | 2" DIAMETER PLUG |
| NOTES: | |
| 1. A MINIMUM OF TWO FULL THREADS ARE REQUIRED FOR TAPPING SLEEVE INTO PIPE WALL | |
| 2. METER BOX AND CURB STOP TO BE INSTALLED BY CONTRACTOR. | |
| 3. ALL FITTINGS IN LATERAL TO BE COMPRESSION TYPE. | |
| 4. INSULATED SINGLE STRAND COPPER WIRE SHALL BE STRAPPED TO PIPE AND ATTACHED TO THE CORPORATION AND CURB STOPS. | |
| 5. INSTALL PVC PLUG IN ALL CURB STOPS IF WATER SERVICE IS NOT IN USE (NO METER INSTALLED) | |
| 6. 1" POLYETHYLENE SDR 9 TUBING. | |

NOT TO SCALE



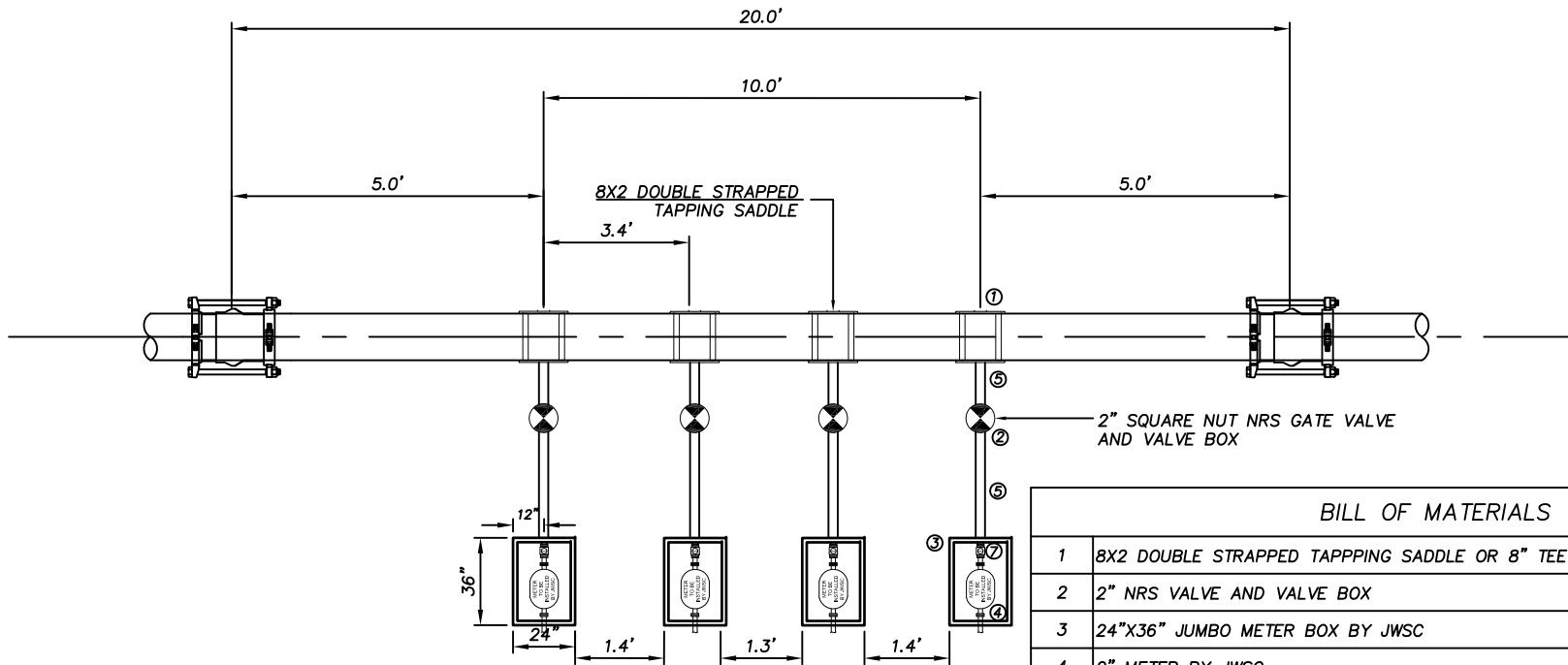
**BRUNSWICK-GLYNN COUNTY
JOINT WATER & SEWER
COMMISSION**

1703 Gloucester Street Phone: (912) 261-7110
Brunswick, Georgia 31520 Fax: (912) 261-7178
Website: www.bgiwsc.org

MULTIPLE WATER SERVICE MANIFOLD

JWSC STANDARD DETAIL 2-18

Date: DECEMBER 2017



| BILL OF MATERIALS | |
|-------------------|---|
| 1 | 8X2 DOUBLE STRAPPED TAPPING SADDLE OR 8" TEE WITH REDUCER |
| 2 | 2" NRS VALVE AND VALVE BOX |
| 3 | 24"X36" JUMBO METER BOX BY JWSC |
| 4 | 2" METER BY JWSC |
| 5 | 2" SDR9 POLYETHYLENE TUBING |
| 6 | 2"X3" BRASS NIPPLE |
| 7 | 2" COMPXFIP BRASS CURB STOP |

- NOTES:
1. A MINIMUM OF TWO FULL THREADS ARE REQUIRED FOR TAPPING SLEEVE INTO PIPE WALL.
 2. CURBSTOP TO BE INSTALLED BY CONTRACTOR.
 3. ALL FITTINGS IN LATERAL TO BE COMPRESSION TYPE.
 4. INSULATED SINGLE STRAND COPPER WIRE SHALL BE STRAPPED TO PIPE AND ATTACHED TO THE CORPORATION AND CURB STOPS.
 5. INSTALL PVC PLUG IN ALL CURB STOPS IF WATER SERVICE IS NOT IN USE (NO METER INSTALLED)

NOT TO SCALE



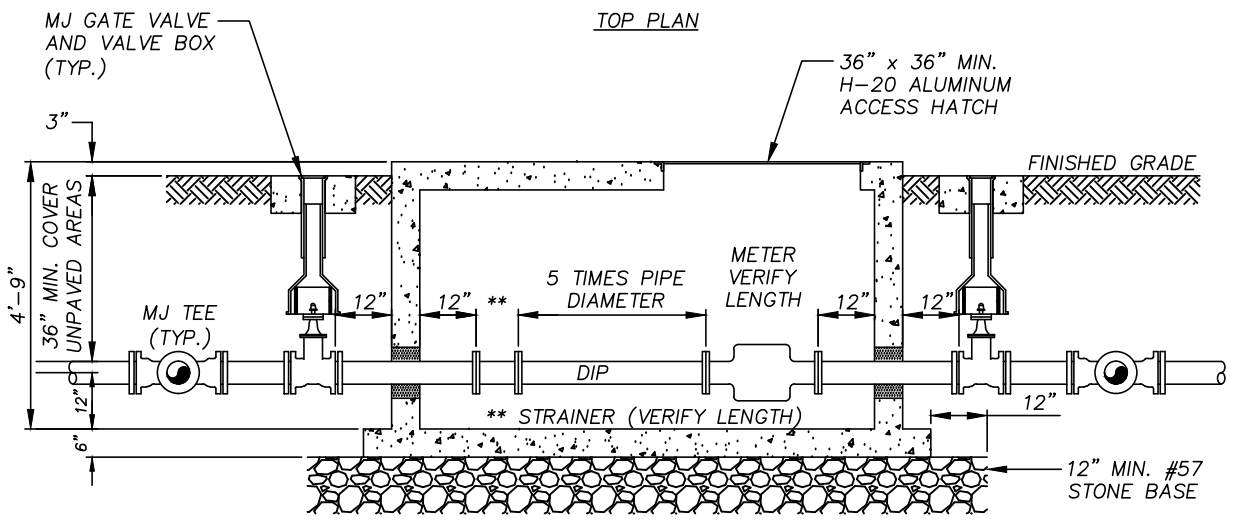
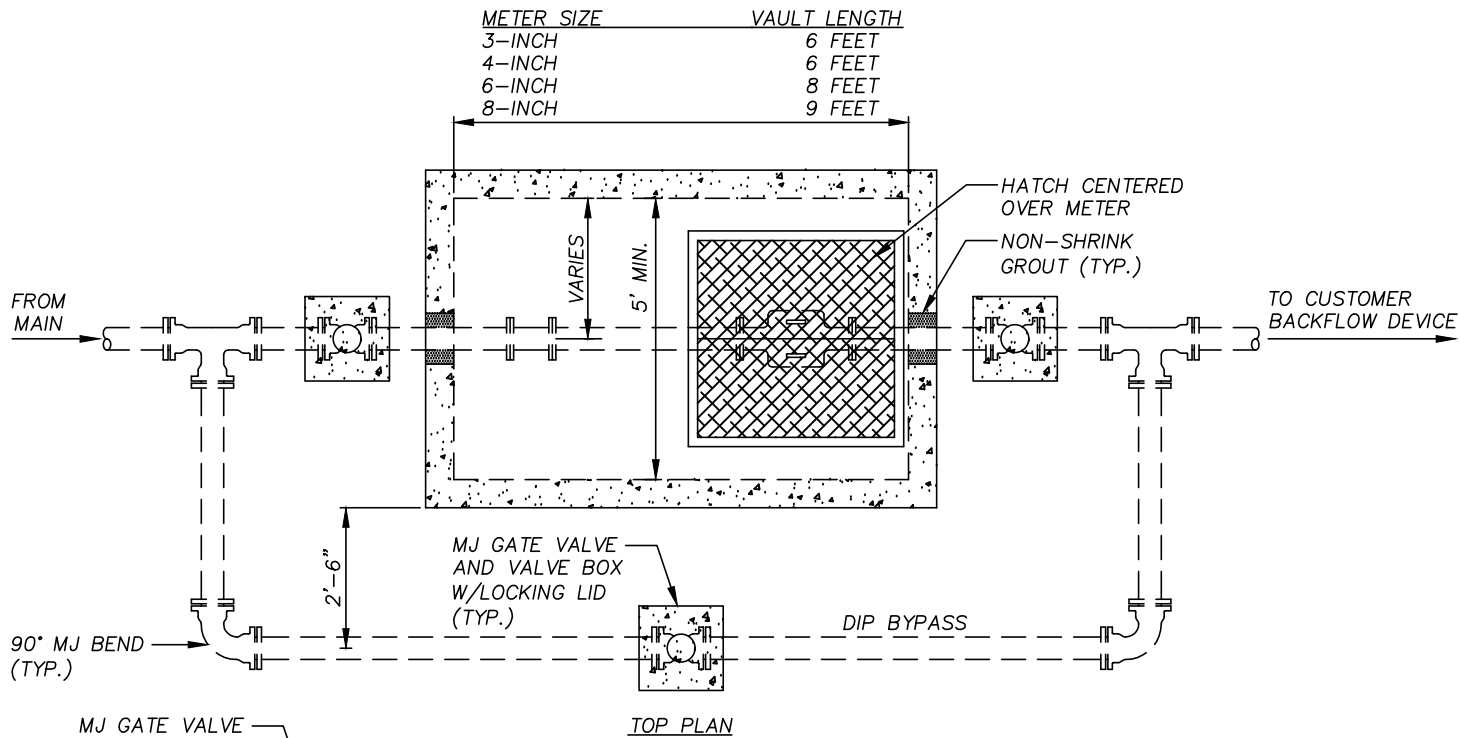
**BRUNSWICK-GLYNN COUNTY
JOINT WATER & SEWER
COMMISSION**

1703 Gloucester Street Phone: (912) 261-7110
 Brunswick, Georgia 31520 Fax: (912) 261-7178
 Website: www.bgjwsc.org

MULTIPLE WATER SERVICE MANIFOLD

JWSC STANDARD DETAIL 2-18A

Date: FEBRUARY 2017



- GENERAL NOTES:
1. WATER METER TO BE PURCHASED FROM THE BRUNSWICK-GLYNN COUNTY JOINT WATER AND SEWER COMMISSION (JWSC). THE JWSC WILL COORDINATE WITH THE UTILITY CONTRACTOR AND WILL INSTALL THE METER. THE OWNER WILL PAY ALL COSTS FOR THE PURCHASE OF THE METER FROM JWSC AS WELL AS ALL ASSOCIATED CONNECTION AND ACCOUNT SET-UP FEES.
 2. CONTRACTOR SHALL BE RESPONSIBLE FOR ALL NECESSARY PIPE, VALVES, FITTINGS, ACCESSORIES, PRECAST VALVE VAULT AND ALL OTHER WORK AND APPURTENANCES REQUIRED.
 3. PRECAST CONCRETE VALVE VAULT TO BE IN ACCORDANCE WITH ASTM C-478. A FACTORY INSTALLED 10MM BITUMASTIC COATING IS REQUIRED.
 4. ALL INTERIOR FITTINGS TO BE DUCTILE IRON WITH FLANGED JOINTS. BURIED FITTINGS TO BE DUCTILE IRON WITH MECHANICAL JOINTS UTILIZING MEGA-LUG JOINT RESTRAINTS.
 5. TRANSMITTER FOR THE WATER METER SHALL BE LOCATED AS DIRECTED BY THE JWSC INSPECTOR.
 6. ALUMINUM ACCESS COVER SHALL BE MODEL W13636 AS MANUFACTURED BY HALLIDAY PRODUCTS INC. OR APPROVED EQUAL. BEFORE THE VAULT IS DELIVERED TO THE SITE, THE CONTRACTOR SHALL SUBMIT SHOP DRAWINGS FROM THE VAULT MANUFACTURER FOR REVIEW.
 7. THE Y STRAINER SHALL BE MANUFACTURED BY KECKLEY OR APPROVED EQUAL.

NOT TO SCALE



**BRUNSWICK-GLYNN COUNTY
JOINT WATER & SEWER
COMMISSION**

1703 Gloucester Street Phone: (912) 261-7110
 Brunswick, Georgia 31520 Fax: (912) 261-7178
 Website: www.bgjwsc.org

**WATER METER INSTALLATION DETAIL
(3-INCH AND LARGER)**

JWSC STANDARD DETAIL 2-19

Date: DEC, 2022

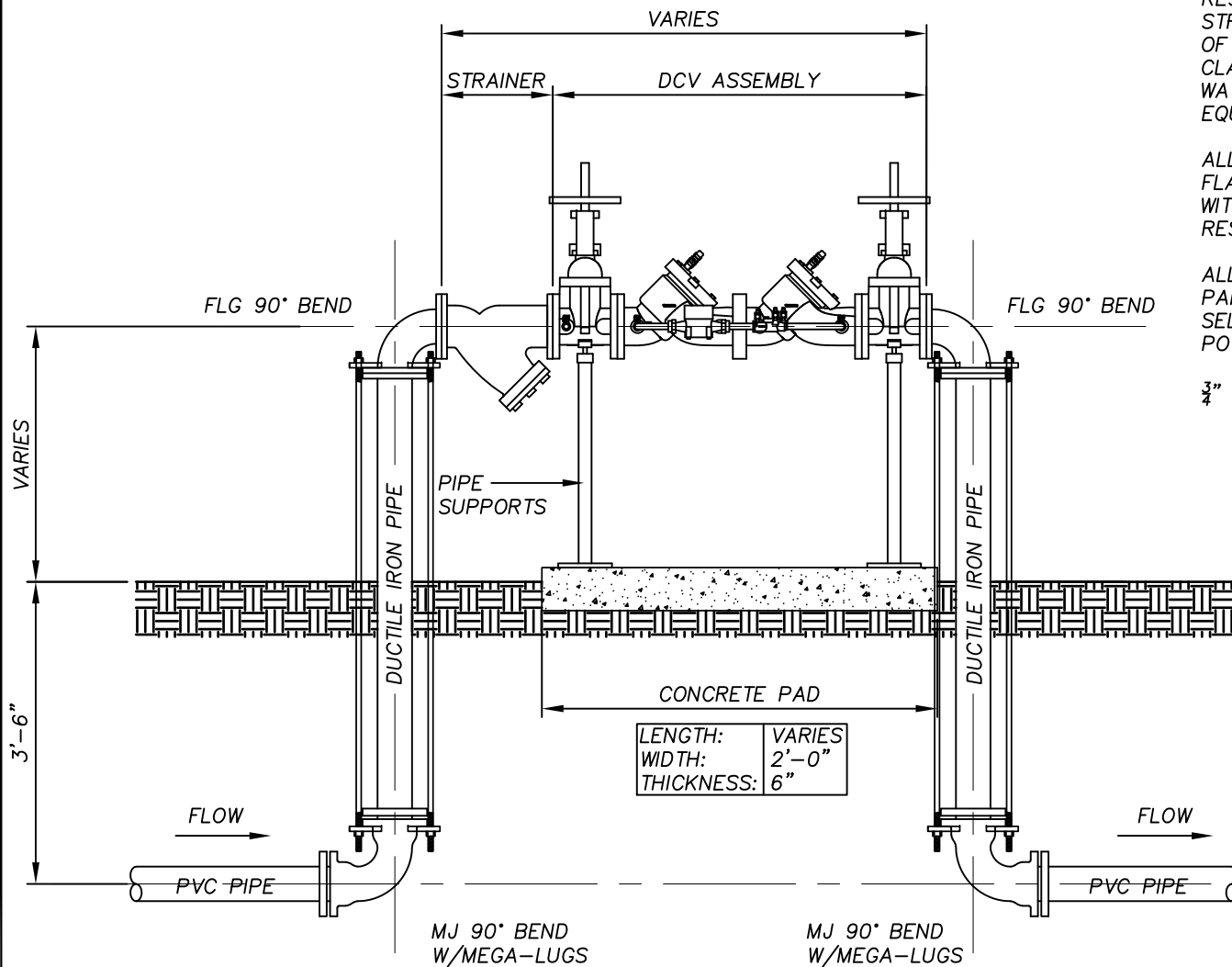
GENERAL NOTES:

DOUBLE CHECK ASSEMBLY SHALL INCLUDE TIGHT CLOSING RESILIENT SEATED SHUTOFF VALVES, TEST COCKS AND STRAINER. THE ASSEMBLY SHALL MEET THE REQUIREMENTS OF ASSE NO. 1015; AWWA C510-92; CSA B64.5 AND UL CLASSIFIED FILE NO. EX3185. ASSEMBLY SHALL BE A WATTS REGULATOR COMPANY SERIES 709 OR APPROVED EQUAL.

ALL ABOVE GROUND FITTINGS TO BE DUCTILE IRON WITH FLANGED JOINTS. BURIED FITTINGS TO BE DUCTILE IRON WITH MECHANICAL JOINTS UTILIZING MEGA-LUG JOINT RESTRAINTS.

ALL ABOVE GROUND DUCTILE IRON PIPING SHALL BE PAINTED WITH AN EXTERIOR GRADE ENAMEL PAINT. COLOR SELECTION IN ACCORDANCE WITH AWWA STANDARDS FOR POTABLE WATER PIPE.

$\frac{3}{4}$ " SS 304 EYE BOLTS, NUT AND WASHER. TYP.



NOT TO SCALE



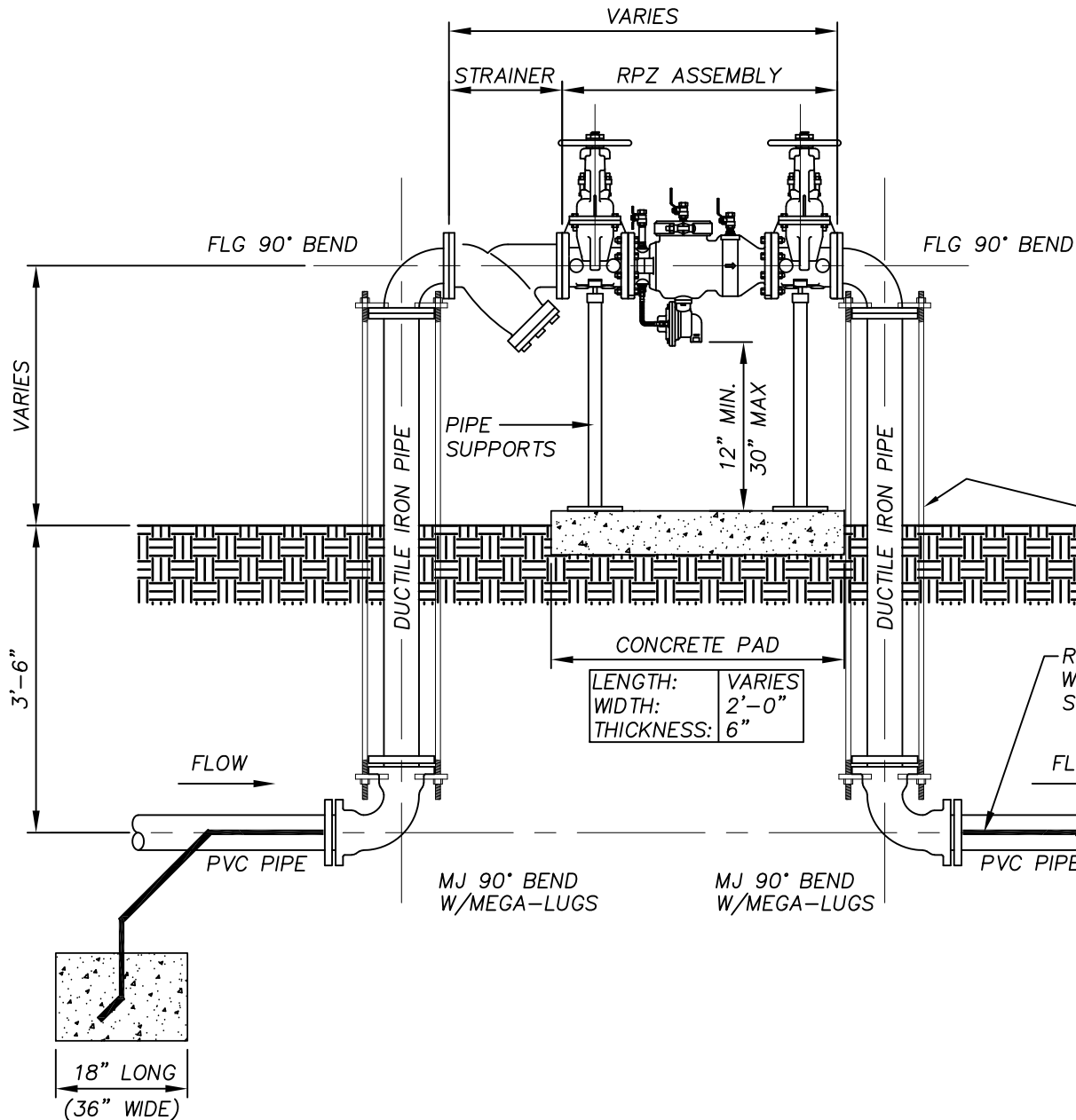
**BRUNSWICK-GLYNN COUNTY
JOINT WATER & SEWER
COMMISSION**

1703 Gloucester Street Phone: (912) 261-7110
Brunswick, Georgia 31520 Fax: (912) 261-7178
Website: www.bgjwsc.org

**DOUBLE CHECK VALVE (DCV) ASSEMBLY
3" THROUGH 10"**

JWSC STANDARD DETAIL 2-20

Date: DECEMBER 2017



GENERAL NOTES:

REDUCED PRESSURE ZONE (RPZ) ASSEMBLY SHALL INCLUDE TIGHT CLOSING RESILIENT SEATED SHUTOFF VALVES, TEST COCKS AND STRAINER. THE ASSEMBLY SHALL MEET THE REQUIREMENTS OF ASSE NO. 1015; AWWA C510-92; CSA B64.5 AND UL CLASSIFIED FILE NO. EX3185. ASSEMBLY SHALL BE A ZURN-WILKINS MODEL 375 OR APPROVED EQUAL.

ALL ABOVE GROUND FITTINGS TO BE DUCTILE IRON WITH FLANGED JOINTS. BURIED FITTINGS TO BE DUCTILE IRON WITH MECHANICAL JOINTS UTILIZING MEGA-LUG JOINT RESTRAINTS.

ALL ABOVE GROUND DUCTILE IRON PIPING SHALL BE PAINTED WITH AN EXTERIOR GRADE ENAMEL PAINT. COLOR SELECTION IN ACCORDANCE WITH AWWA STANDARDS FOR POTABLE WATER PIPE.

3/4" SS 304 EYE BOLTS, NUT AND WASHER. TYP.

304 SS THREADED STEEL ROD W/ NUTS & LOCK WASHER, LENGTH AS REQUIRED (TYP)

REPLACE CENTER FLANGE BOLTS WITH SAME SIZE DIAMETER 316 STAINLESS STEEL ALL TREAD ROD.

NOT TO SCALE



**BRUNSWICK-GLYNN COUNTY
JOINT WATER & SEWER
COMMISSION**

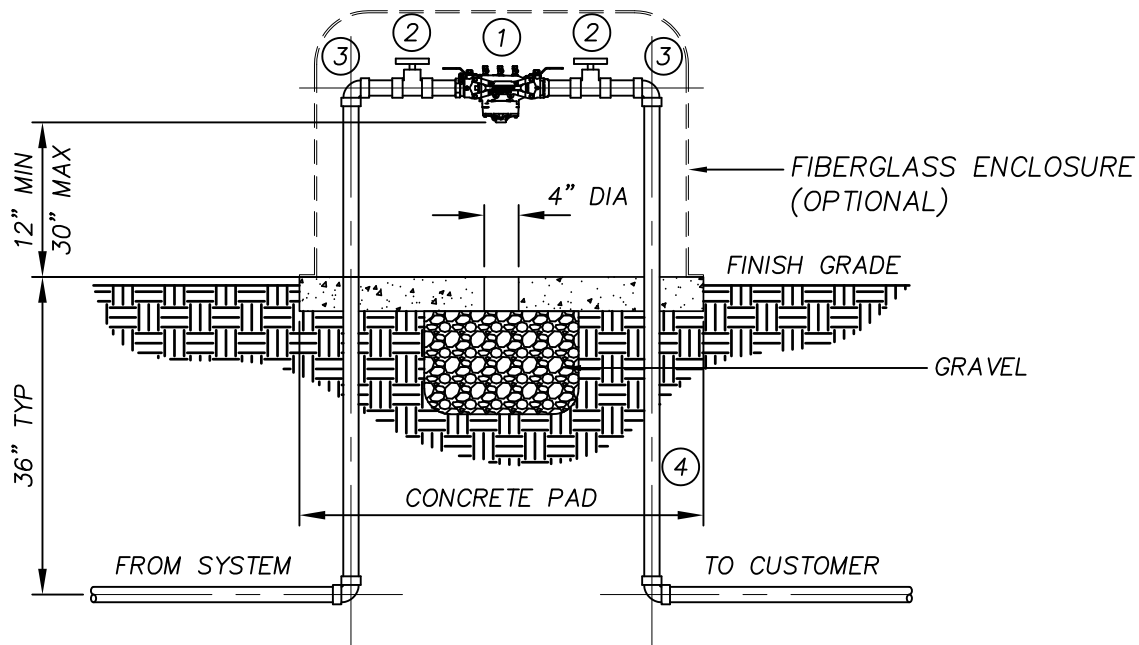
1703 Gloucester Street
Brunswick, Georgia 31520
Website: www.bgjwsc.org

Phone: (912) 261-7110
Fax: (912) 261-7178

**REDUCED PRESSURE ZONE (RPZ) ASSEMBLY
3" THROUGH 10"**

JWSC STANDARD DETAIL 2-21A

Date: DECEMBER 2017



| MATERIALS | |
|-----------|--------------------------------------|
| QTY. | DESCRIPTION |
| 1 | RPZ ASSEMBLY (ZURN-WILKINS OR EQUAL) |
| 2 | FULL PORT BALL VALVE |
| 3 | 90° ELBOW |
| 4 | BRASS - HARD COPPER - SCH 80 PVC |

PROVIDE ALL BRASS FITTINGS, NIPPLES, COUPLINGS, ETC. REQUIRED FOR THE COMPLETE INSTALLATION. FOR INSTALLATIONS LOCATED IN OR NEAR PARKING LOTS AND DRIVEWAYS, STEEL PIPE BOLLARDS ARE RECOMMENDED.

NOT TO SCALE



**BRUNSWICK-GLYNN COUNTY
JOINT WATER & SEWER
COMMISSION**

1703 Gloucester Street
Brunswick, Georgia 31520

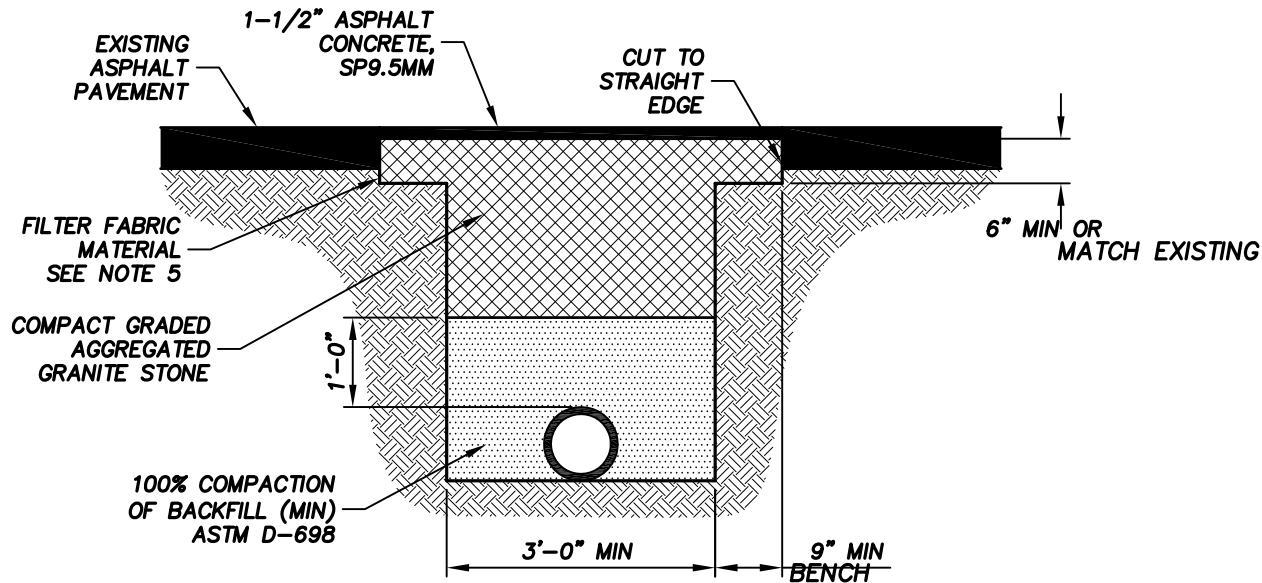
Phone: (912) 261-7110
Fax: (912) 261-7178

Website: www.bgjwsc.org

**REDUCED PRESSURE ZONE (RPZ) ASSEMBLY
2.5" AND SMALLER**

JWSC STANDARD DETAIL 2-21B

Date: DECEMBER 2017



NOTE:

1. ALL GRADED AGGREGATE MUST COMPLY WITH THE CONTRACT PAVEMENT SPECIFICATIONS.
2. THE GRADED AGGREGATE SHALL BE PLACED IN NO MORE THAN 6" LIFTS AND COMPACTED TO 100% STANDARD PROCTOR (ASTM D698). THE IN-PLACE DENSITY IS TO BE TESTED BY ASTM D2922 OR ASTM D1556.
3. FOR LONGITUDINAL CUTS EXCEEDING 150 LF IN LENGTH, THE GRADED AGGREGATE IN THE TRENCH WILL BE BROUGHT FLUSH WITH THE EXISTING PAVEMENT AND THE ENTIRE WIDTH OF THE ROADWAY RESURFACED WITH A MINIMUM OF 1" OF SP9.5MM ASPHALT OR SURFACE COURSE.
4. FILTER FABRIC MATERIAL SHALL BE EQUAL OR EQUIVALENT TO MIRAFI 140, MANUFACTURED BY FIBER INDUSTRIES, INC

NOT TO SCALE



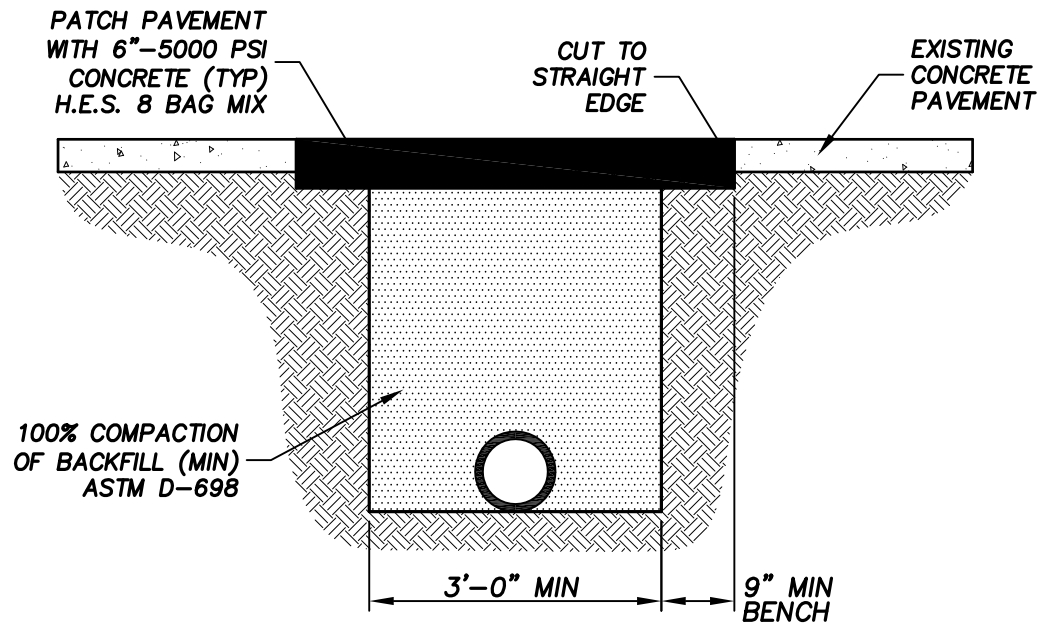
**BRUNSWICK-GLYNN COUNTY
JOINT WATER & SEWER
COMMISSION**

700 Gloucester Street, Suite 300 Phone: (912) 261-7110
Brunswick, Georgia 31520 Fax: (912) 261-7178
Website: www.bgjwsc.org

ASPHALT PAVEMENT REPLACEMENT

JWSC STANDARD DETAIL 2-22

Date: AUGUST 2011



NOTE:

1. ALL LATERAL STREET CUTS MUST BE COVERED WITH STEEL PLATES OF SUFFICIENT THICKNESS TO SPAN THE CUT WITHOUT NOTICEABLE DEFLECTION. THESE PLATES ARE TO REMAIN IN PLACE UNTIL THE CONCRETE BASE HAS GAINED SUFFICIENT STRENGTH TO WITHSTAND TRAFFIC LOADS (24 HOUR MINIMUM.)
2. ON CUTS EXCEEDING 150 FEET IN LENGTH, THE CONCRETE IN TRENCH WILL BE BROUGHT FLUSH WITH THE EXISTING PAVEMENT. THE EXISTING PAVEMENT SHALL BE SAW CUT TO A STRAIGHT EDGE AND THE ENTIRE WIDTH OF THE ROADWAY RESURFACES WITH A MINIMUM OF 1" OF "TYPE F" ASPHALT TOPPING OR SURFACE COURSE.

NOT TO SCALE



**BRUNSWICK-GLYNN COUNTY
JOINT WATER & SEWER
COMMISSION**

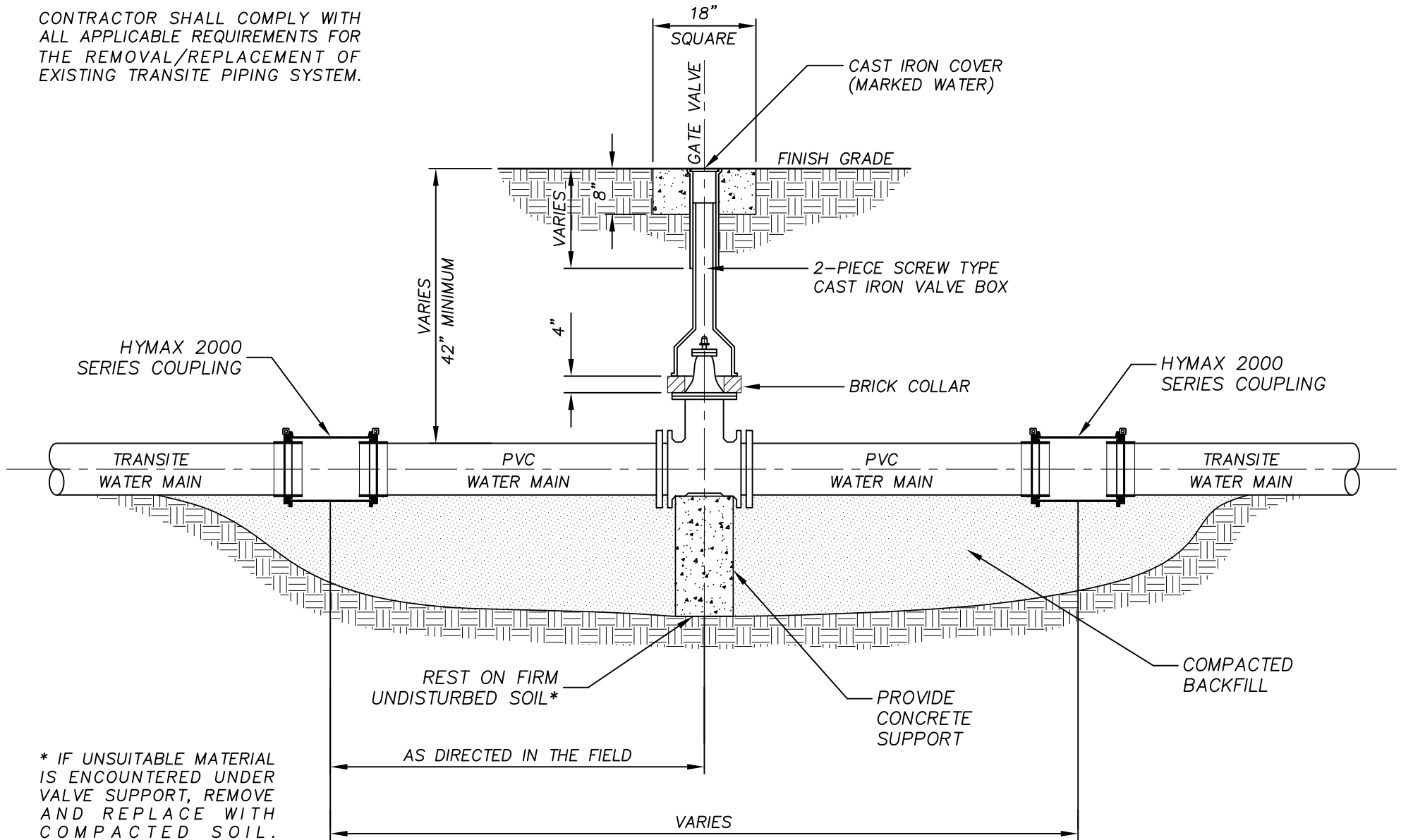
700 Gloucester Street, Suite 300 Phone: (912) 261-7110
Brunswick, Georgia 31520 Fax: (912) 261-7178
Website: www.bgjwsc.org

CONCRETE PAVEMENT REPLACEMENT

JWSC STANDARD DETAIL 2-23

Date: AUGUST 2011

CONTRACTOR SHALL COMPLY WITH ALL APPLICABLE REQUIREMENTS FOR THE REMOVAL/REPLACEMENT OF EXISTING TRANSITE PIPING SYSTEM.



* IF UNSUITABLE MATERIAL IS ENCOUNTERED UNDER VALVE SUPPORT, REMOVE AND REPLACE WITH COMPACTED SOIL.



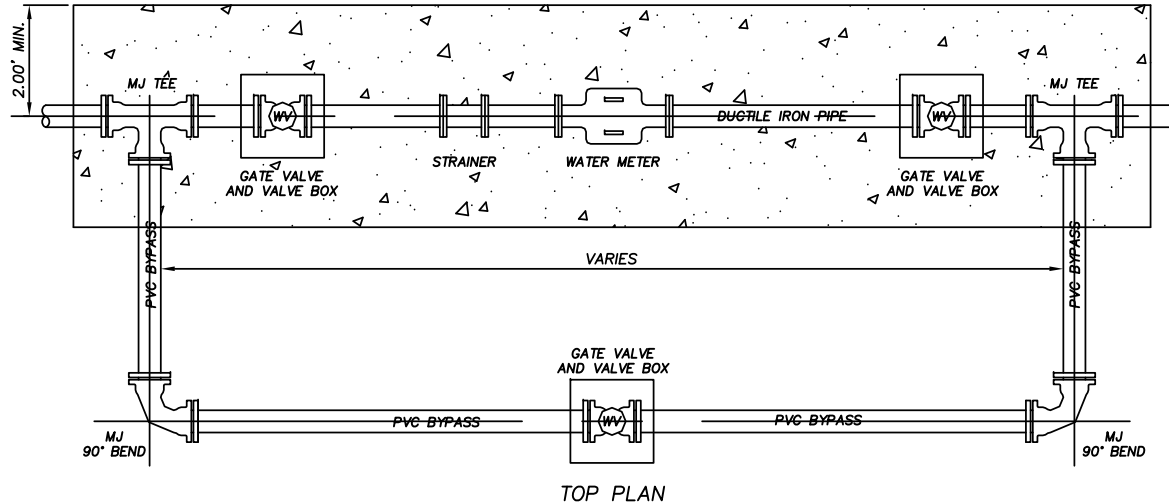
BRUNSWICK-GLYNN COUNTY
JOINT WATER & SEWER
COMMISSION

700 Gloucester Street, Suite 300 Phone: (912) 261-7110
Brunswick, Georgia 31520 Fax: (912) 261-7178
Website: www.bgjwsc.org

TRANSITE TO PVC WATER MAIN SPLICE

JWSC STANDARD DETAIL 2-24

Date: AUGUST 2011



TOP PLAN

GENERAL NOTES

WATER METER TO BE PURCHASED FROM THE BRUNSWICK - GLYNN JOINT WATER & SEWER COMMISSION (JWSC). THE OWNER WILL PAY ALL COSTS FOR THE PURCHASE OF THE METER FROM JWSC AS WELL AS ALL ASSOCIATED CONNECTION AND ACCOUNT SET-UP FEES.

CONTRACTOR SHALL BE RESPONSIBLE FOR PICKUP AND DELIVERY OF THE METER FROM JWSC TO THE JOB SITE. CONTRACTOR SHALL ALSO BE RESPONSIBLE FOR WATER METER INSTALLATION INCLUDING ALL NECESSARY PIPE, VALVES, FITTINGS, ACCESSORIES, AND ALL OTHER WORK AND APPURTENANCES REQUIRED.

ALL FITTINGS TO BE DUCTILE IRON WITH FLANGED JOINTS. BURIED FITTINGS TO BE DUCTILE IRON WITH MECHANICAL JOINTS UTILIZING MEGA-LUG JOINT RESTRAINTS.

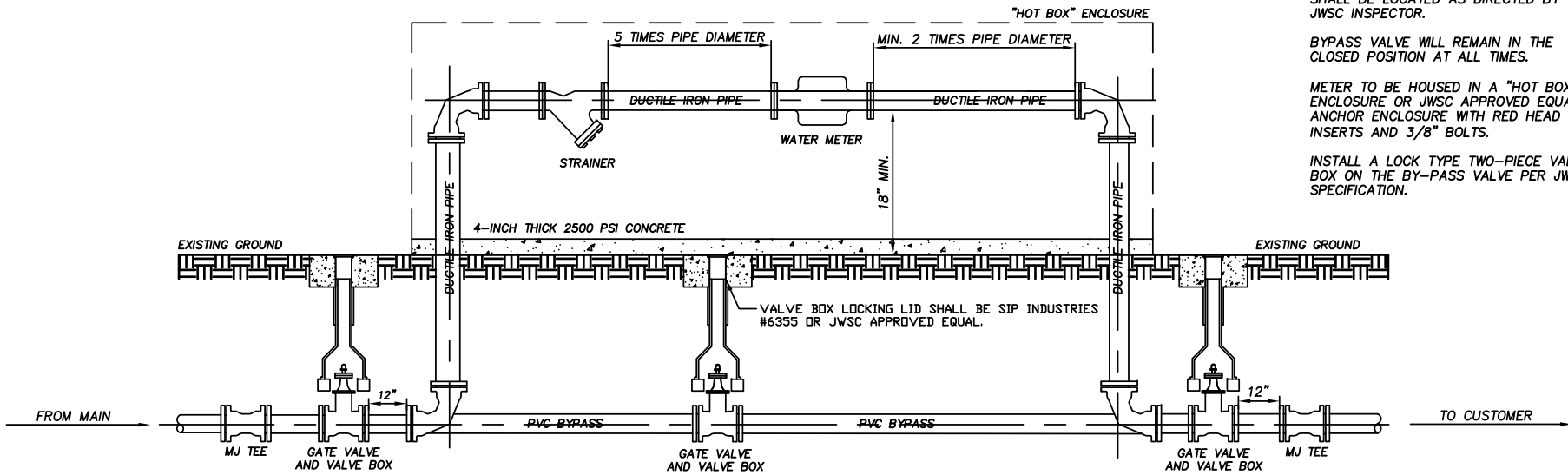
ALL DUCTILE IRON PIPE SHALL BE COATED WITH A BITUMINOUS COATING WITH A MINIMUM THICKNESS OF 2 MILLS OR WRAPPED IN PLASTIC.

TRANSMITTER FOR THE WATER METER SHALL BE LOCATED AS DIRECTED BY THE JWSC INSPECTOR.

BYPASS VALVE WILL REMAIN IN THE CLOSED POSITION AT ALL TIMES.

METER TO BE HOUSED IN A "HOT BOX" ENCLOSURE OR JWSC APPROVED EQUAL. ANCHOR ENCLOSURE WITH RED HEAD INSERTS AND 3/8" BOLTS.

INSTALL A LOCK TYPE TWO-PIECE VALVE BOX ON THE BY-PASS VALVE PER JWSC SPECIFICATION.



SECTION

NOT TO SCALE



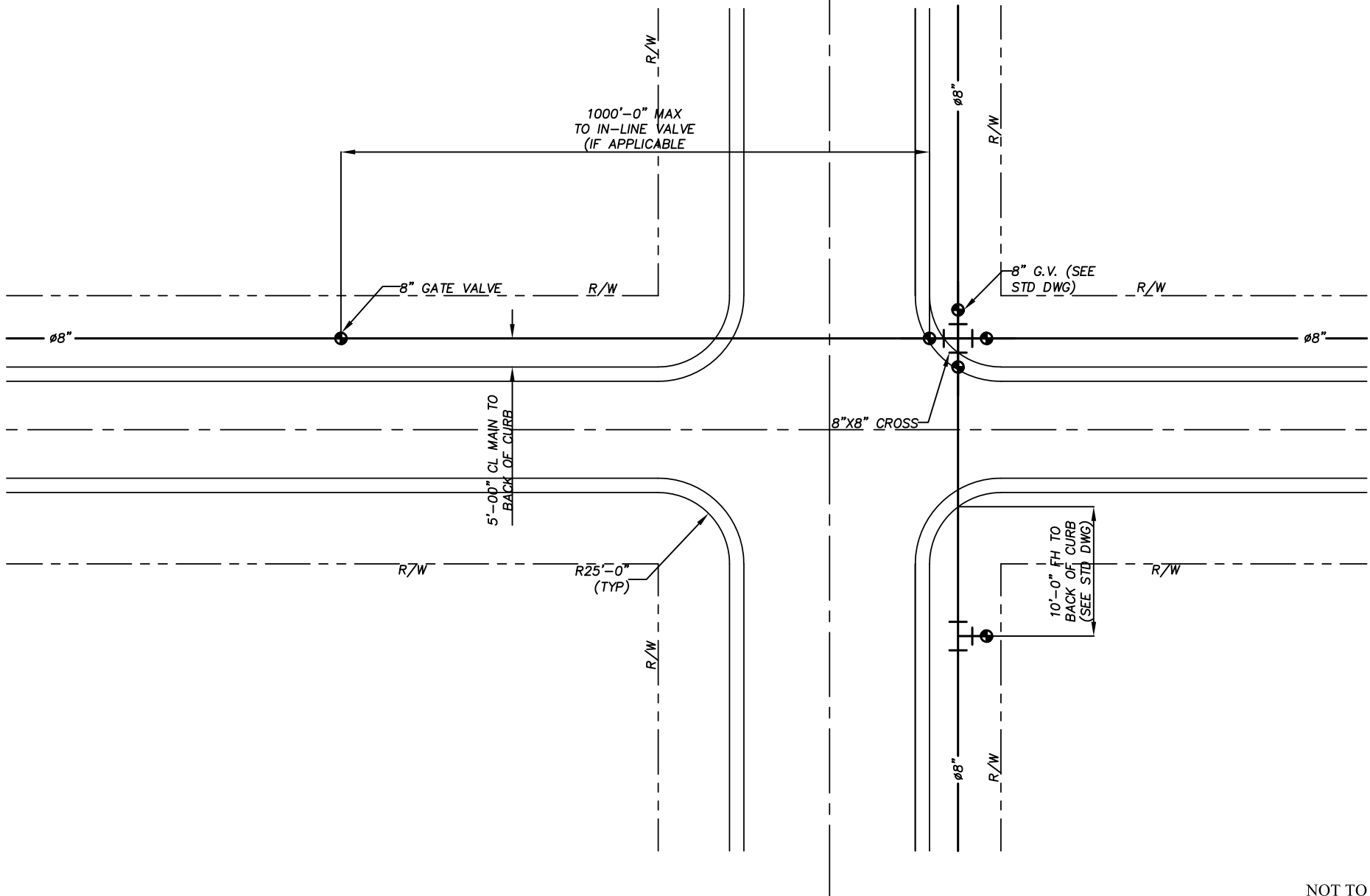
BRUNSWICK-GLYNN COUNTY
JOINT WATER & SEWER
COMMISSION

1703 Gloucester Street Phone: (912) 261-7110
Brunswick, Georgia 31520 Fax: (912) 261-7178
Website: www.bgiwsc.org

ABOVE GRADE WATER METER INSTALLATION
DETAIL (3" & LARGER)

JWSC STANDARD DETAIL 2-25

Date: JANUARY 2016



NOT TO SCALE



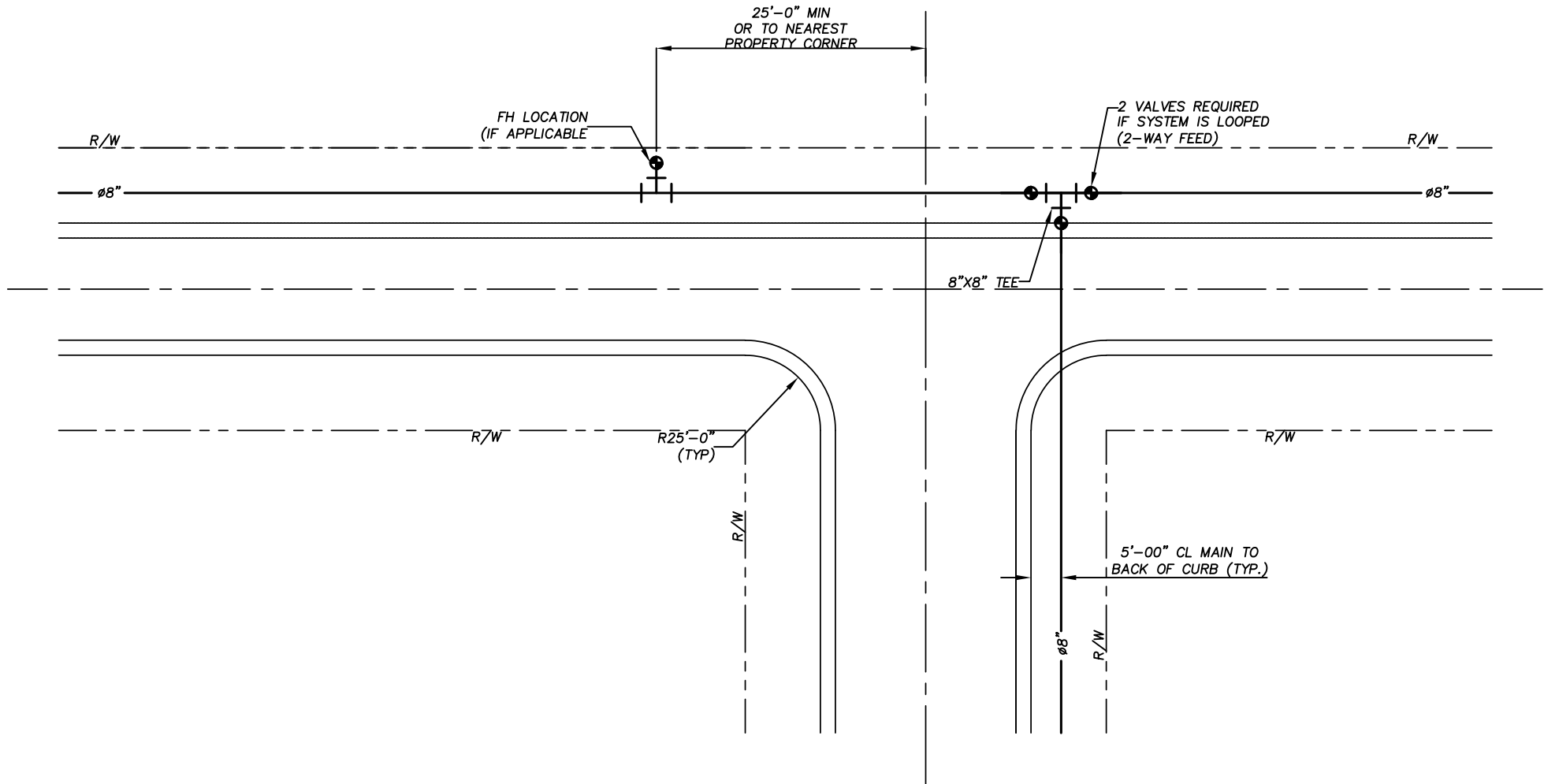
**BRUNSWICK-GLYNN COUNTY
JOINT WATER & SEWER
COMMISSION**

1703 Gloucester Street Phone: (912) 261-7110
 Brunswick, Georgia 31520 Fax: (912) 261-7178
 Website: www.bgjwsc.org

WATER MAIN AT 4-WAY INTERSECTION

JWSC STANDARD DETAIL 2-26

Date: DECEMBER 2017



NOT TO SCALE



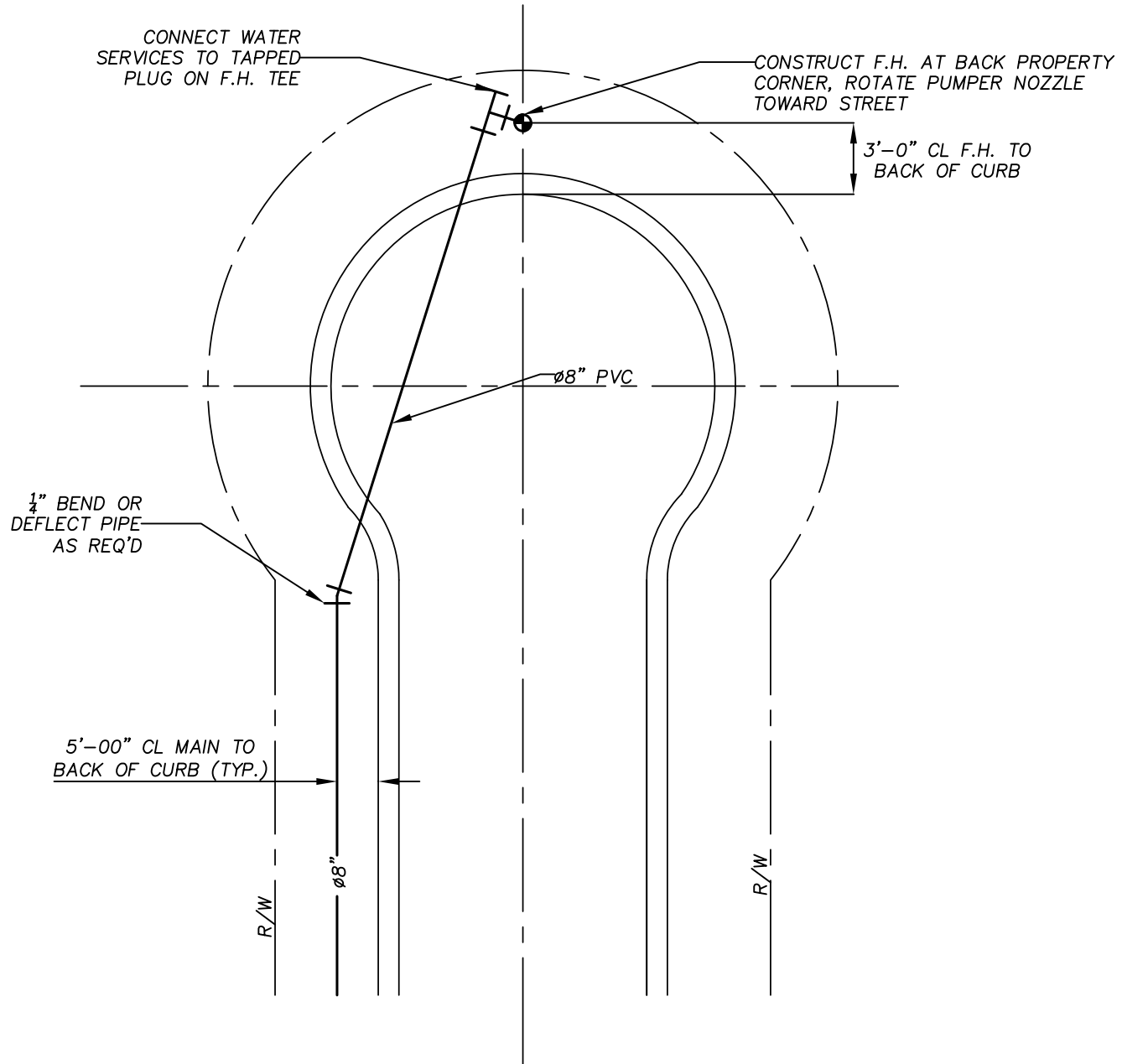
**BRUNSWICK-GLYNN COUNTY
JOINT WATER & SEWER
COMMISSION**

1703 Gloucester Street Phone: (912) 261-7110
Brunswick, Georgia 31520 Fax: (912) 261-7178
Website: www.bgjwsc.org

WATER MAIN AT TEE INTERSECTION

JWSC STANDARD DETAIL 2-26 A

Date: DECEMBER 2017



NOT TO SCALE



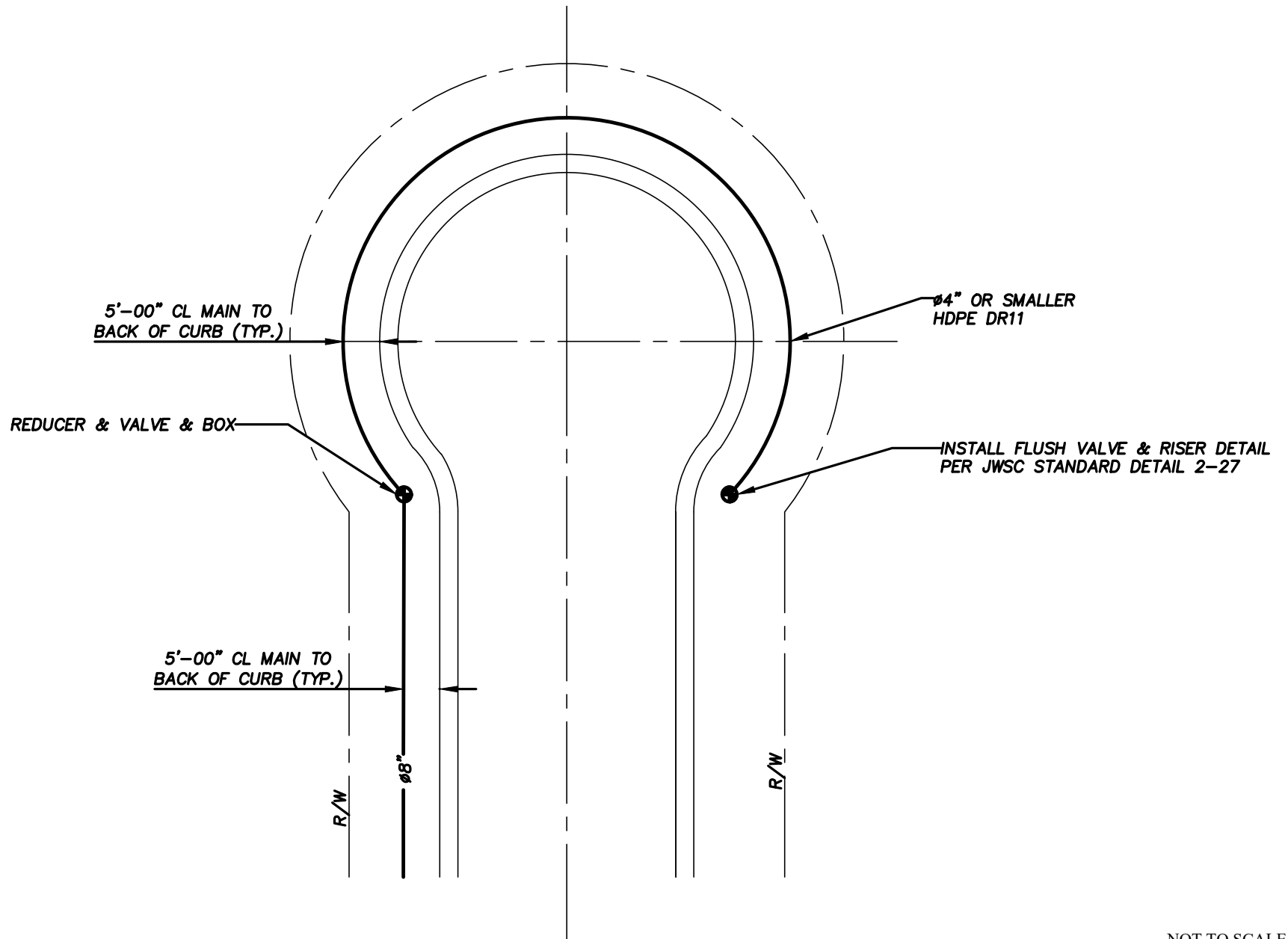
**BRUNSWICK-GLYNN COUNTY
JOINT WATER & SEWER
COMMISSION**

1703 Gloucester Street Phone: (912) 261-7110
 Brunswick, Georgia 31520 Fax: (912) 261-7178
 Website: www.bgjwsc.org

WATER MAIN AT CUL-DE-SAC

JWSC STANDARD DETAIL 2-26 B

Date: DECEMBER 2017



NOT TO SCALE



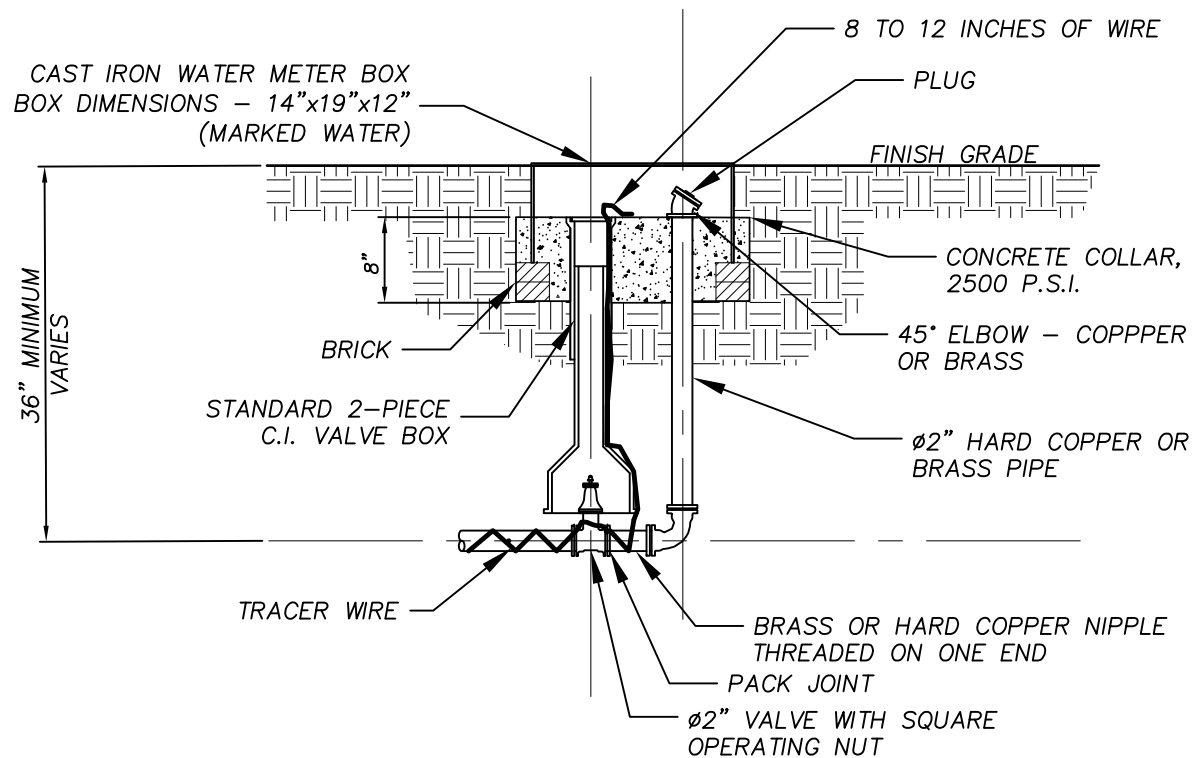
BRUNSWICK-GLYNN COUNTY
JOINT WATER & SEWER
COMMISSION

1703 Gloucester Street Phone: (912) 261-7110
Brunswick, Georgia 31520 Fax: (912) 261-7178
Website: www.bgjwsc.org

WATER MAIN AT CUL-DE-SAC - 4" & SMALLER

JWSC STANDARD DETAIL 2-26 C

Date: JUNE 2020



GENERAL NOTES:

1. THIS INSTALLATION IS TO BE MADE AT THE END OF DEAD END LINES AND SHALL BE LOCATED OUTSIDE OF THE TRAFFIC AREAS.
2. PRIOR TO INSTALLATION OF CONCRETE COLLAR, THE FLUSHER SHALL BE TESTED TO ENSURE THE FLOW CLEARS THE EDGE OF THE BOX.

NOT TO SCALE



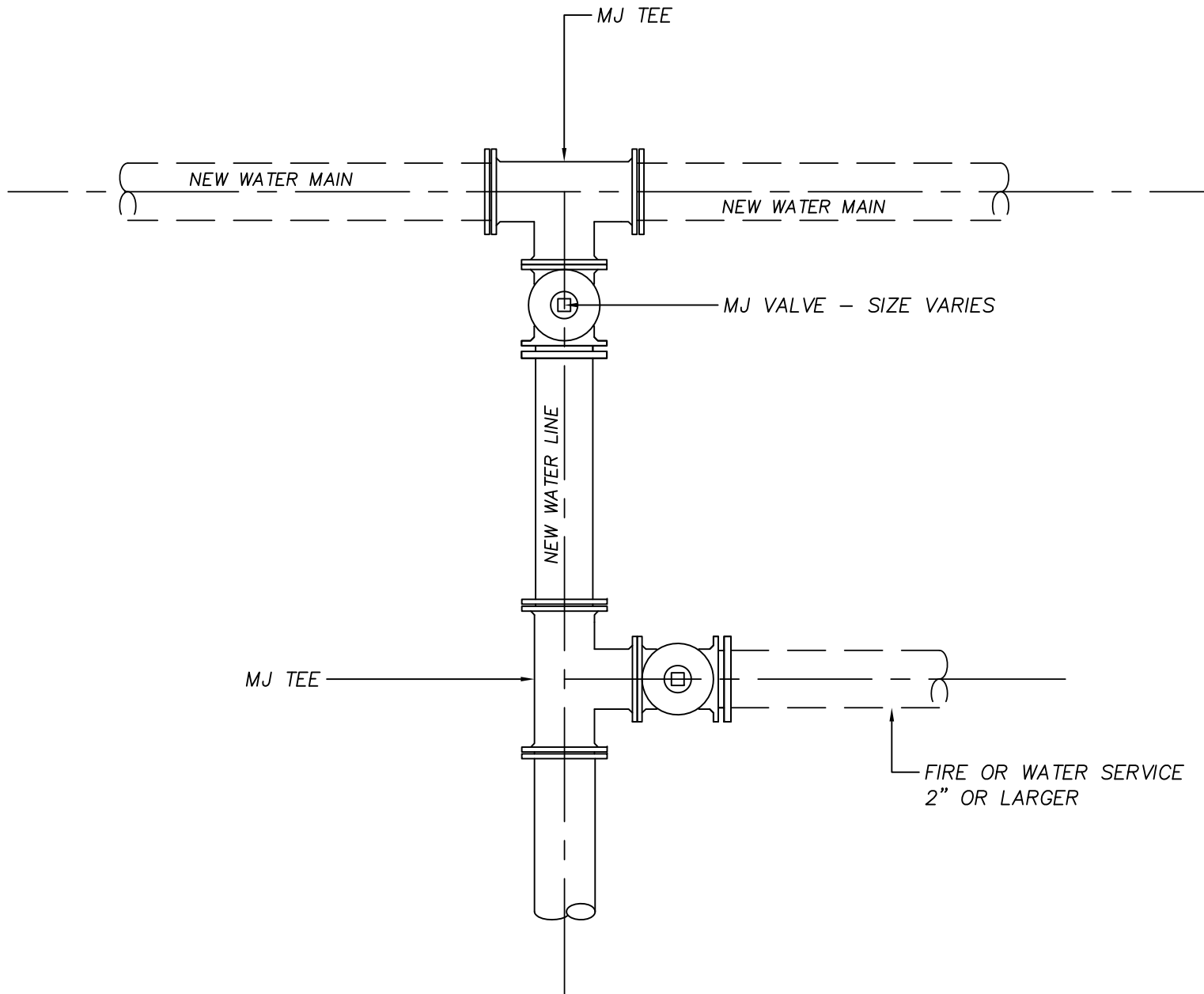
BRUNSWICK-GLYNN COUNTY
JOINT WATER & SEWER
COMMISSION

1703 Gloucester Street Phone: (912) 261-7110
Brunswick, Georgia 31520 Fax: (912) 261-7178
Website: www.bgjwsc.org

FLUSH VALVE AND RISER DETAIL

JWSC STANDARD DETAIL 2-27

Date: APRIL 2018



NOT TO SCALE



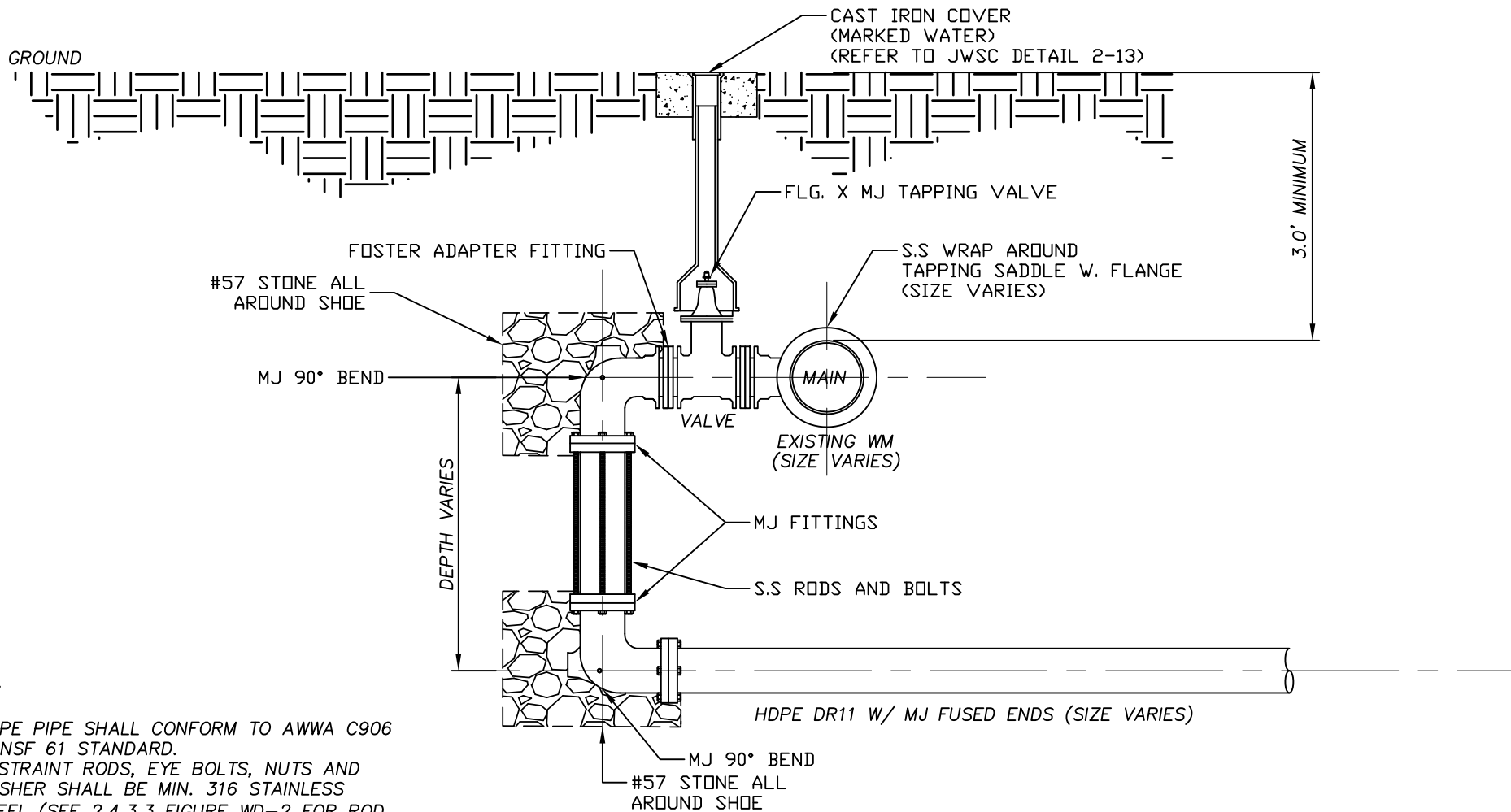
**BRUNSWICK-GLYNN COUNTY
JOINT WATER & SEWER
COMMISSION**

1703 Gloucester Street Phone: (912) 261-7110
 Brunswick, Georgia 31520 Fax: (912) 261-7178
 Website: www.bgjwsc.org

TEE CONNECTION TO NEW WATER MAIN

JWSC STANDARD DETAIL 2-28

Date: JULY 2018



NOTES:

1. HDPE PIPE SHALL CONFORM TO AWWA C906 & NSF 61 STANDARD.
2. RESTRAINT RODS, EYE BOLTS, NUTS AND WASHER SHALL BE MIN. 316 STAINLESS STEEL (SEE 2.4.3.3 FIGURE WD-2 FOR ROD SIZE AND NO. OF RODS).
3. **THE APPROVAL OF THIS TYPE OF INSTALLATION MUST COME FROM THE JWSC WATER DISTRIBUTION SUPERINTENDENT.**

NOT TO SCALE



BRUNSWICK-GLYNN COUNTY
JOINT WATER & SEWER
COMMISSION

1703 Gloucester Street Phone: (912) 261-7110
Brunswick, Georgia 31520 Fax: (912) 261-7178
Website: www.bgjwsc.org

REVERSE TAP DETAIL

JWSC STANDARD DETAIL 2-29

Date: JAN, 2020