

WETWELL LEVEL SETTINGS		
LWL	LOW WATER LEVEL	TOP OF PUMP VOLUTE
OFF	ALL PUMPS OFF	MID POINT OF MOTOR HOUSING
LEAD ON	LEAD PUMP ON	SEE JWSC DESIGN STANDARDS
LAG ON	LAG PUMP ON	LEAD PUMP ON LEVEL PLUS 6"
SHW	SCADA HIGH WATER LEVEL	LAG PUMP ON LEVEL PLUS 6" (*)
AVHW	AUDIO/VISUAL HIGH WATER LEVEL	SCADA HIGH WATER LEVEL PLUS 6"
(*) IN NO CASE SHALL THE SHW LEVEL BE HIGHER THAN THE INVERT OF THE LOWEST SEWER INTO THE INFLUENT MANHOLE.		

NOT TO SCALE



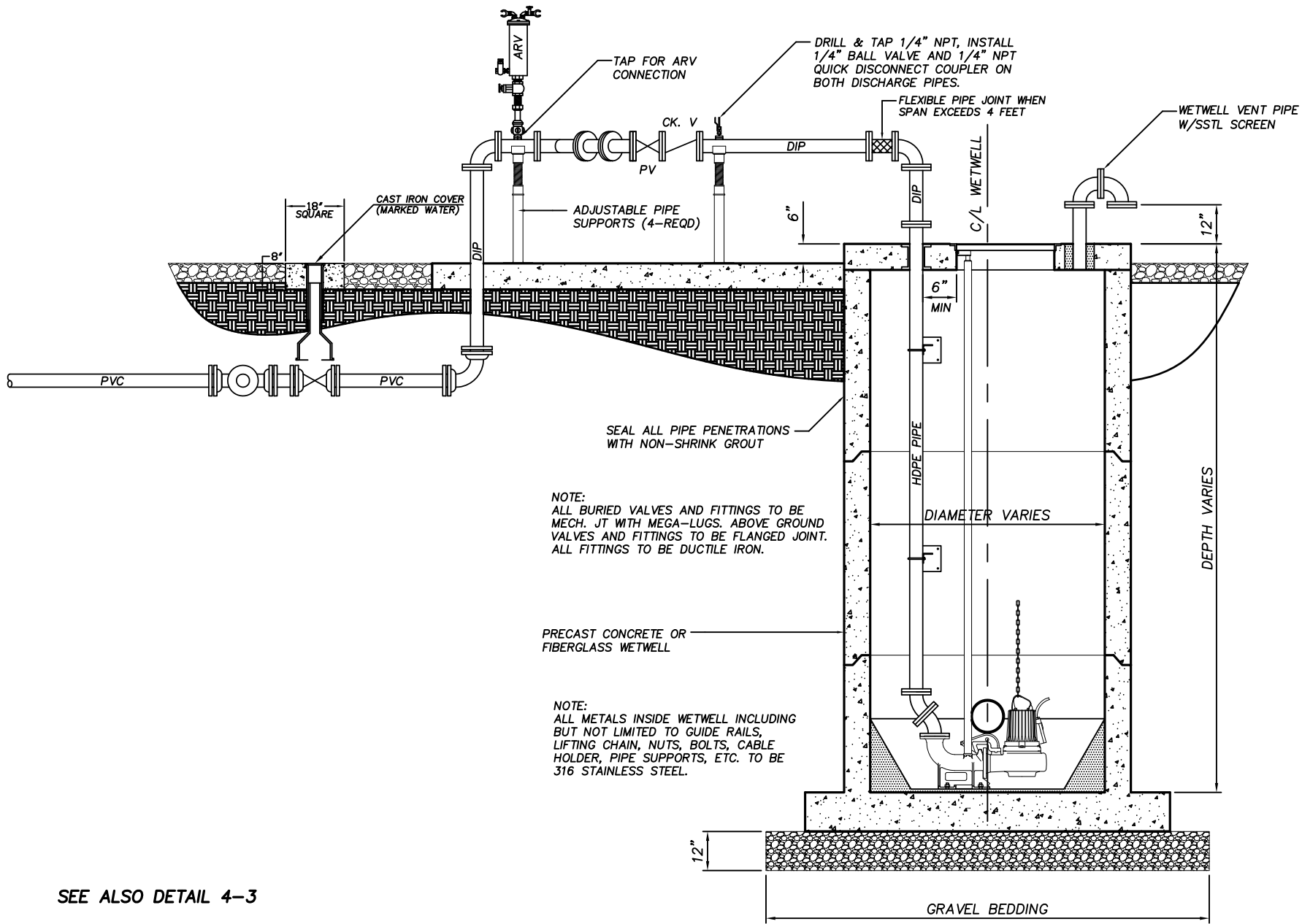
**BRUNSWICK-GLYNN COUNTY
JOINT WATER & SEWER
COMMISSION**

700 Gloucester Street, Suite 300 Phone: (912) 261-7110
Brunswick, Georgia 31520 Fax: (912) 261-7178
Website: www.bgjwsc.org

WETWELL LEVEL SETTINGS

JWSC STANDARD DETAIL 4-1

Date: AUGUST 2011



SEE ALSO DETAIL 4-3

NOT TO SCALE



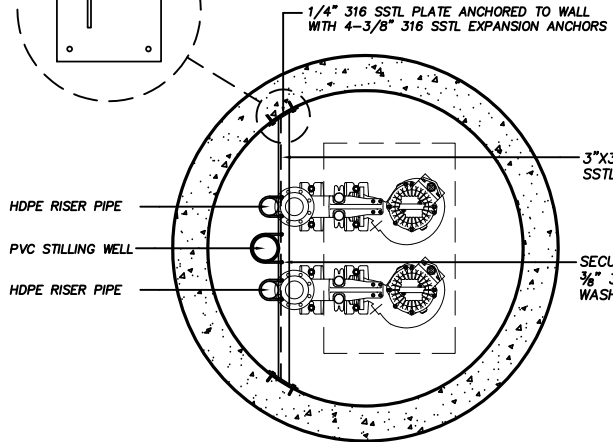
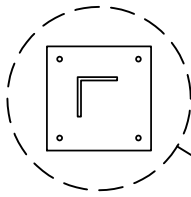
BRUNSWICK-GLYNN COUNTY
JOINT WATER & SEWER
COMMISSION

700 Gloucester Street, Suite 300 Phone: (912) 261-7110
Brunswick, Georgia 31520 Fax: (912) 261-7178
Website: www.bgjwsc.org

TYPICAL PUMPING STATION - SECTION

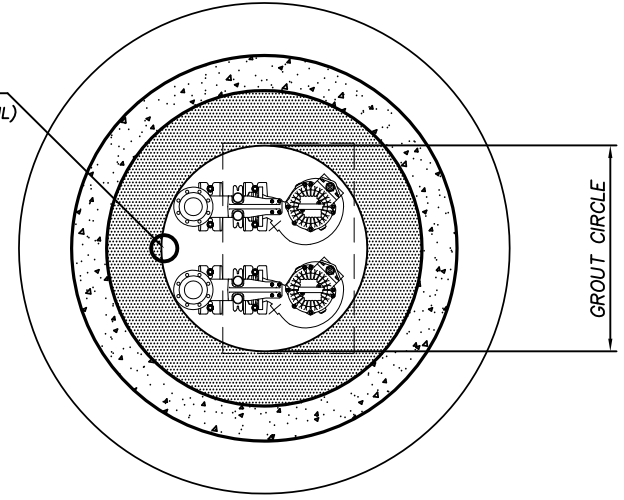
JWSC STANDARD DETAIL 4-2

Date: OCTOBER 2011

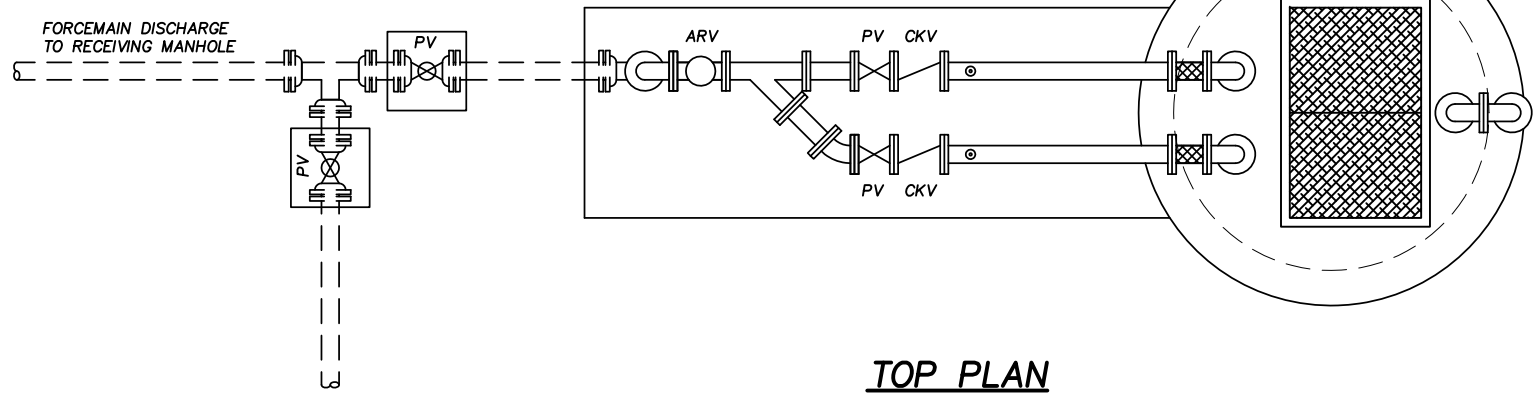


INTERMEDIATE PLAN

TRANSDUCER STILLING WELL
(WHEN REQUIRED - SEE DETAIL)



LOWER PLAN



TOP PLAN

TO EMERGENCY PUMP
OUT CONNECTION SEE
DETAIL 4-6

SEE ALSO DETAILS 4-2
AND 4-6

NOT TO SCALE



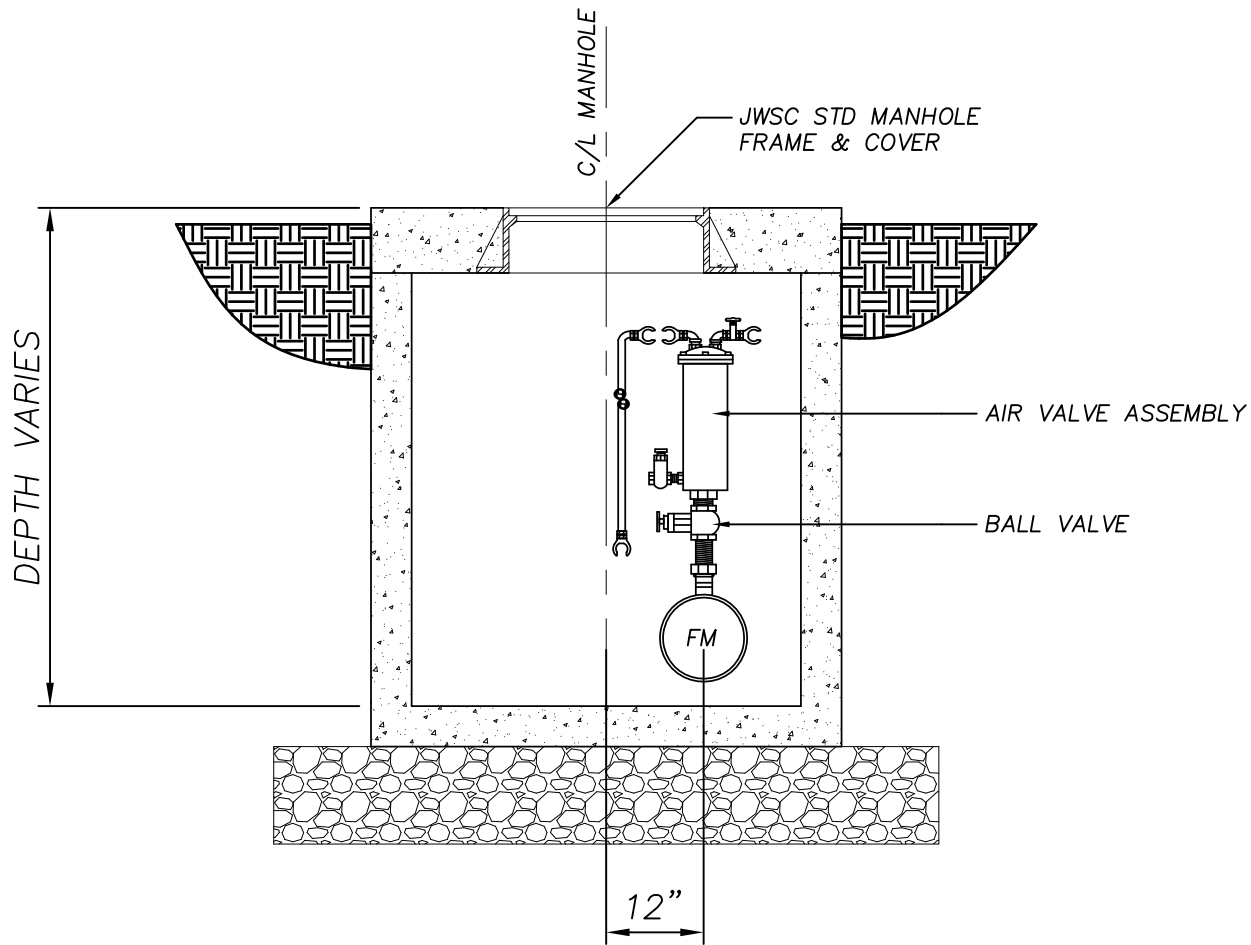
**BRUNSWICK-GLYNN COUNTY
JOINT WATER & SEWER
COMMISSION**

700 Gloucester Street, Suite 300 Phone: (912) 261-7110
Brunswick, Georgia 31520 Fax: (912) 261-7178
Website: www.bgjwsc.org

TYPICAL PUMPING STATION - PLAN

JWSC STANDARD DETAIL 4-3

Date: OCTOBER 2011



NOT TO SCALE



**BRUNSWICK-GLYNN COUNTY
JOINT WATER & SEWER
COMMISSION**

700 Gloucester Street, Suite 300 Phone: (912) 261-7110
 Brunswick, Georgia 31520 Fax: (912) 261-7178
 Website: www.bgjwsc.org

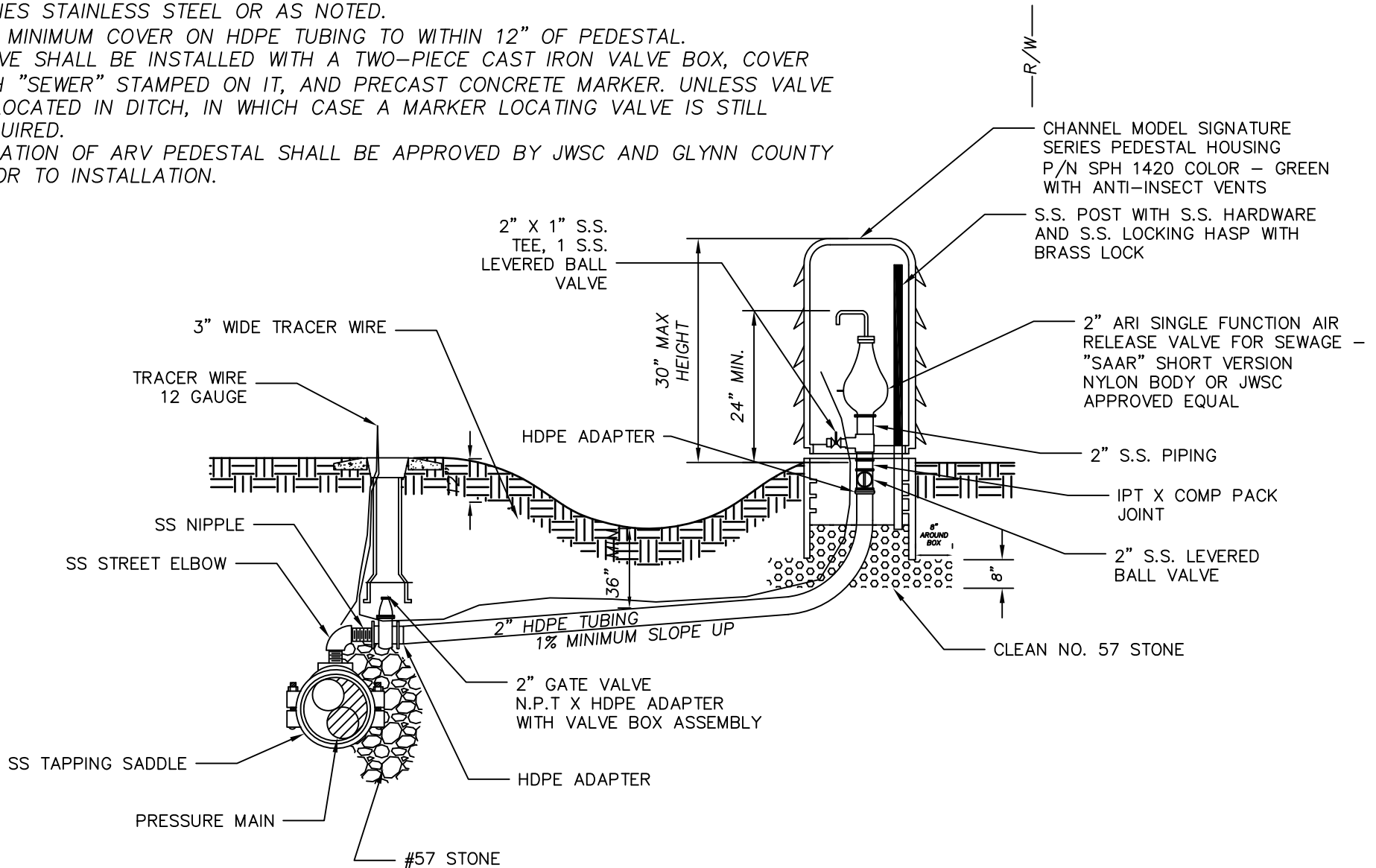
ARV MANHOLE

JWSC STANDARD DETAIL 4-4

Date: OCTOBER 2011

NOTES:

1. PIPING, NIPPLES, PLUGS & BALL VALVES AND TAPPING SADDLES TO BE 316 SERIES STAINLESS STEEL OR AS NOTED.
2. 36" MINIMUM COVER ON HDPE TUBING TO WITHIN 12" OF PEDESTAL.
3. VALVE SHALL BE INSTALLED WITH A TWO-PIECE CAST IRON VALVE BOX, COVER WITH "SEWER" STAMPED ON IT, AND PRECAST CONCRETE MARKER. UNLESS VALVE IS LOCATED IN DITCH, IN WHICH CASE A MARKER LOCATING VALVE IS STILL REQUIRED.
4. LOCATION OF ARV PEDESTAL SHALL BE APPROVED BY JWSC AND GLYNN COUNTY PRIOR TO INSTALLATION.



NOT TO SCALE



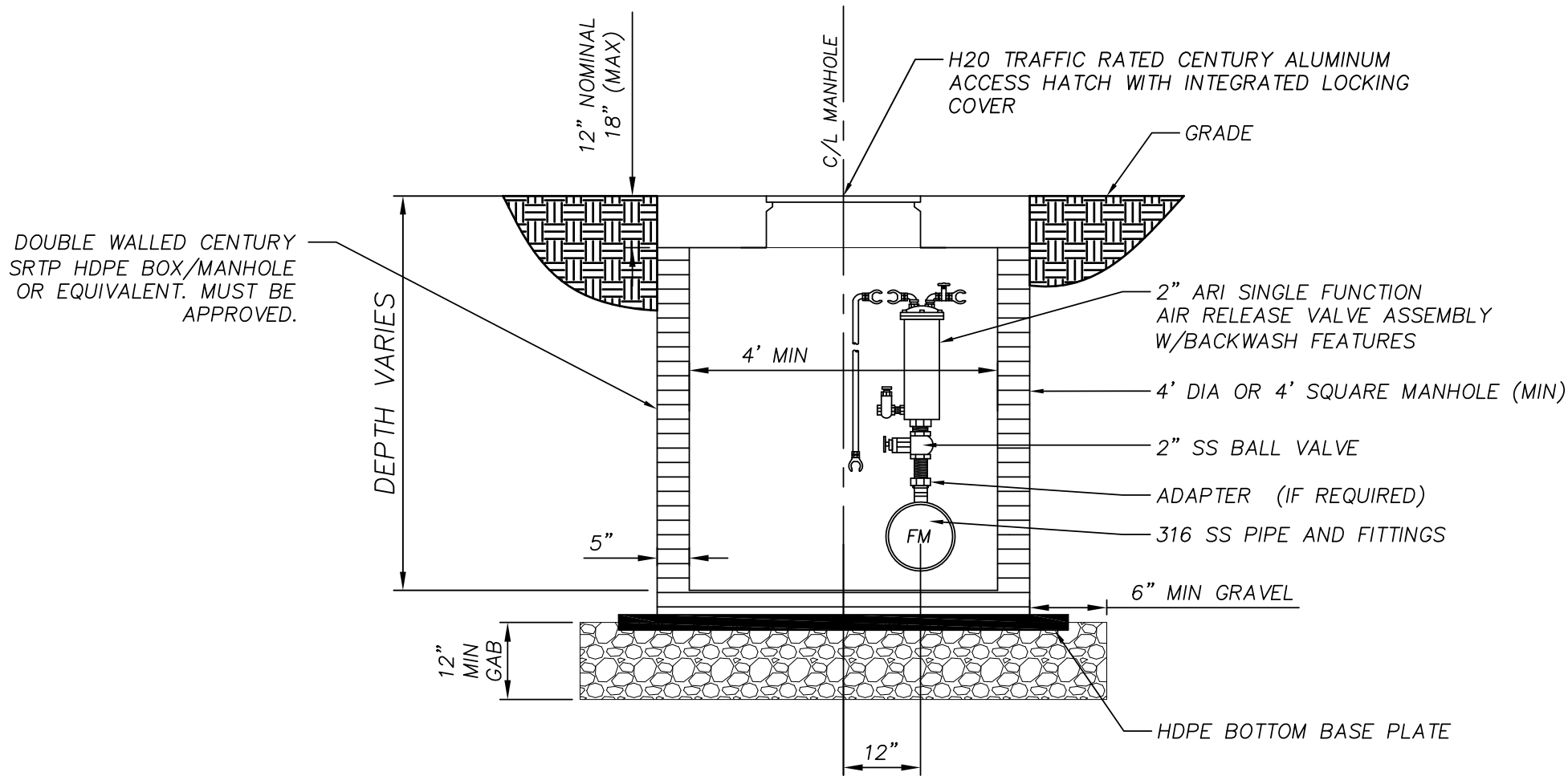
BRUNSWICK-GLYNN COUNTY
JOINT WATER & SEWER
COMMISSION

1703 Gloucester Street Phone:(912) 261-7110
Brunswick, Georgia 31520 Fax: (912) 261-7178
Website: www.bgjwsc.org

SEWER AIR RELEASE VALVE PEDESTAL
ASSEMBLY DETAIL

JWSC STANDARD DETAIL 4-4A

Date: JANUARY 2017



NOTES:
THE ACCESS HATCH SHALL HAVE NO GASKET TO
ALLOW AIR TO EXIT VAULT PER JWSC STANDARDS

NOT TO SCALE



**BRUNSWICK-GLYNN COUNTY
JOINT WATER & SEWER
COMMISSION**

1703 Gloucester Street Phone: (912) 261-7110
Brunswick, Georgia 31520 Fax: (912) 261-7178
Website: www.bgjwsc.org

ARV HDPE BOX/MANHOLE

JWSC STANDARD DETAIL 4-4B

Date: JANUARY 2017

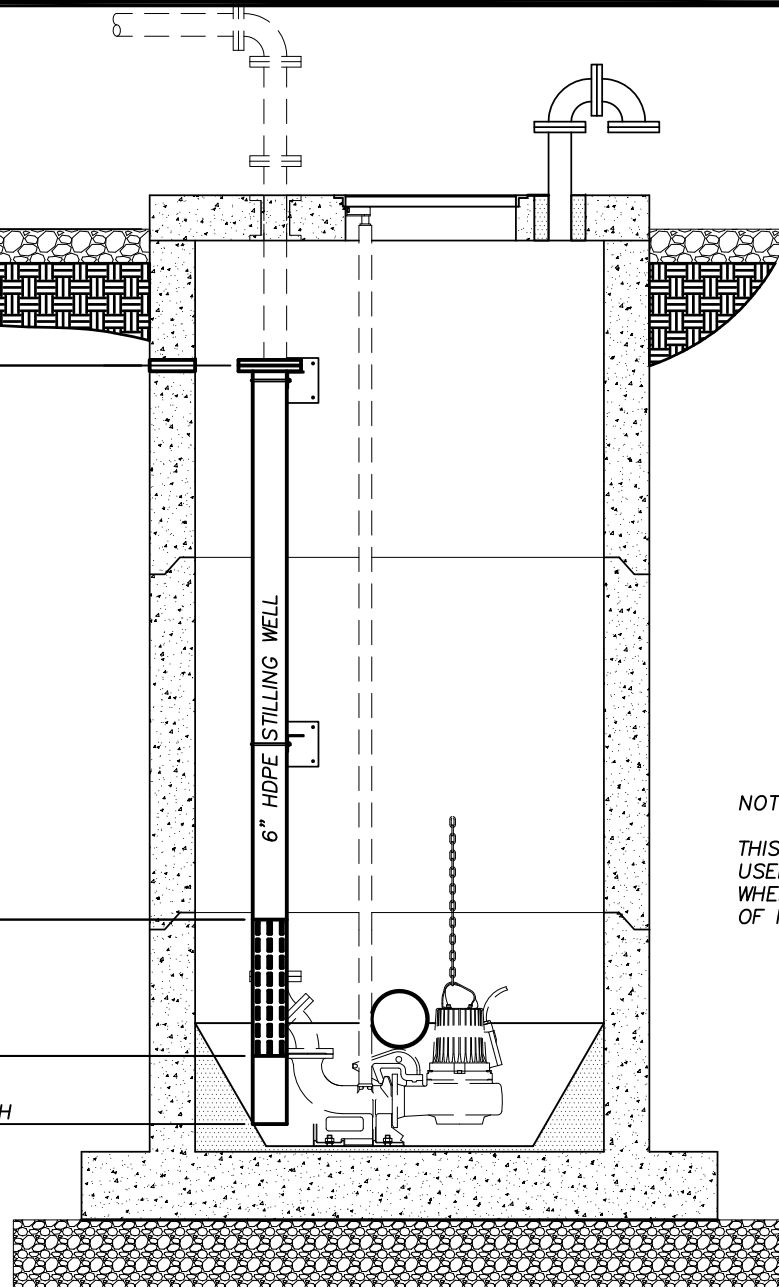
2" SLEEVE AND TOP
OF STILLING WELL

24"

HEIGHT VARIES
ANCHOR SECURELY WITH PUMP DISCHARGE PIPES

24"
SLOTTED

12"
SET LEVEL WITH
PUMP INTAKE



NOTE:

THIS STILLING WELL DETAIL TO BE
USED ONLY WHERE INDICATED AND
WHERE TRANSDUCER IS USED IN LIEU
OF FLOAT SWITCHES.

NOT TO SCALE



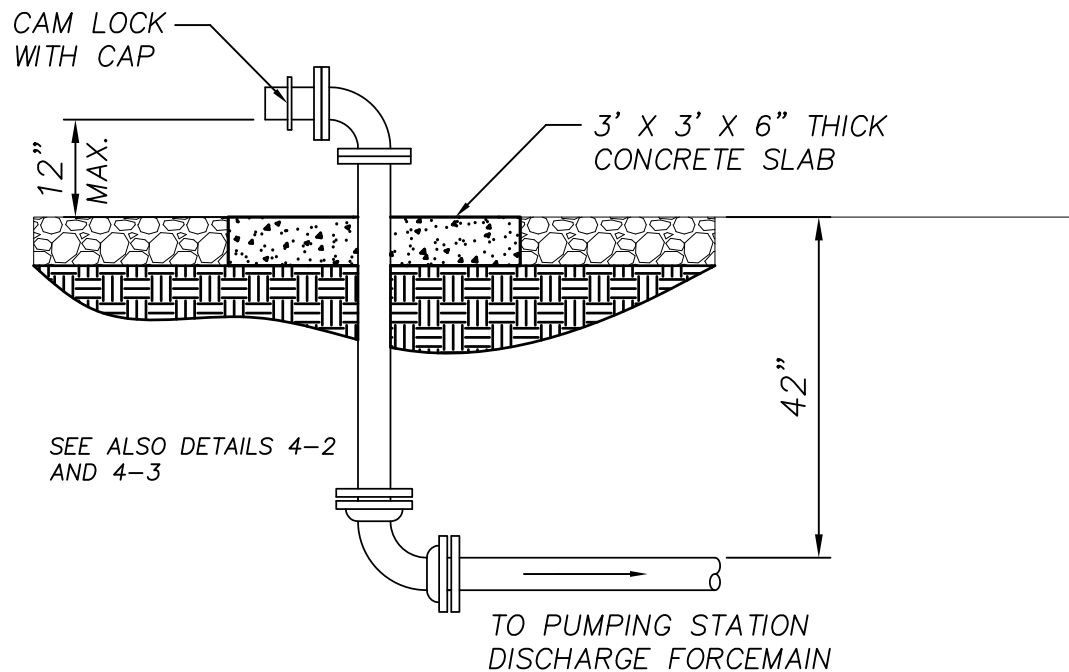
BRUNSWICK-GLYNN COUNTY
JOINT WATER & SEWER
COMMISSION

700 Gloucester Street, Suite 300 Phone: (912) 261-7110
Brunswick, Georgia 31520 Fax: (912) 261-7178
Website: www.bgjwsc.org

TRANSDUCER STILLING WELL

JWSC STANDARD DETAIL 4-5

Date: OCTOBER 2011



NOT TO SCALE



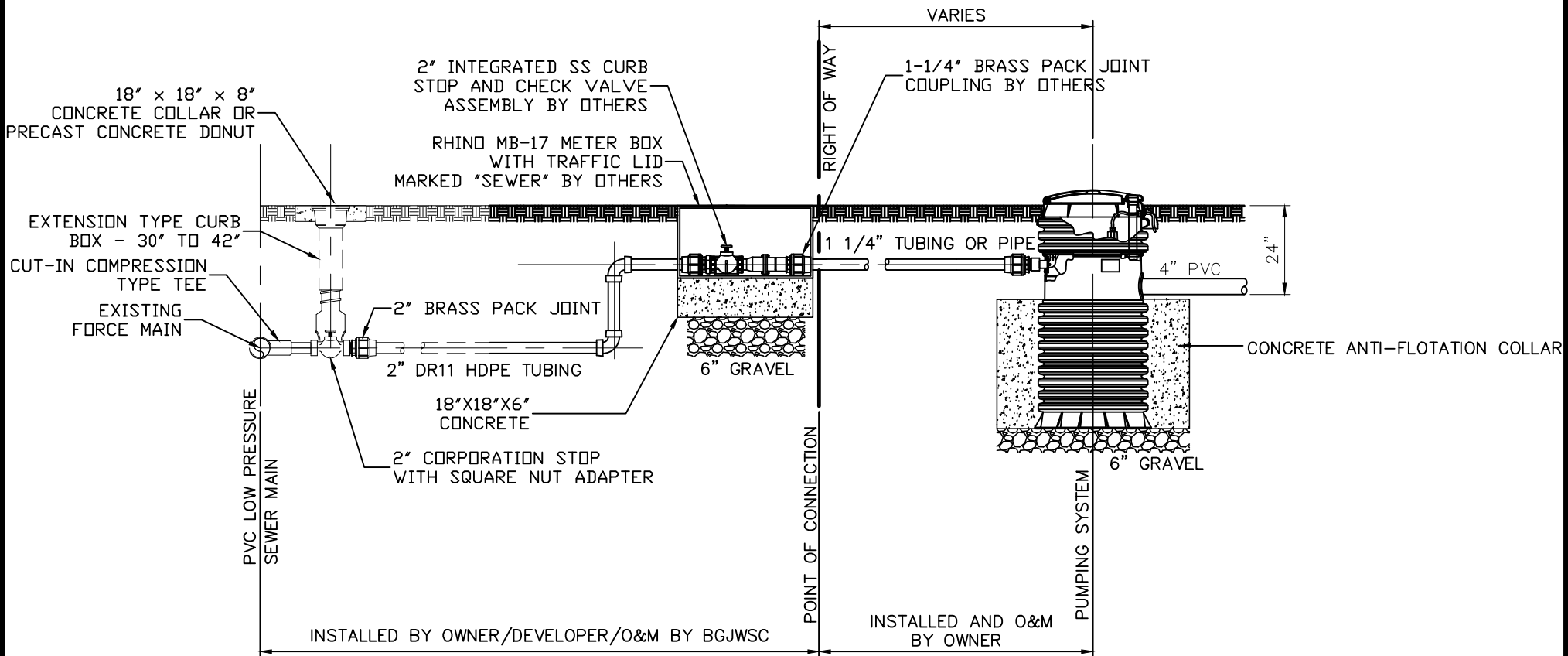
**BRUNSWICK-GLYNN COUNTY
JOINT WATER & SEWER
COMMISSION**

700 Gloucester Street, Suite 300 Phone: (912) 261-7110
Brunswick, Georgia 31520 Fax: (912) 261-7178
Website: www.bgjwsc.org

FACILITY BYPASS PUMPING CONNECTION

JWSC STANDARD DETAIL 4-6

Date: OCTOBER 2011



NOTES:

1. THE 2" INTEGRATED STAINLESS STEEL CURB STOP/CHECK VALVE ASSEMBLY SHALL BE E/ONE PART NUMBER NC0443P01, NC0517G01 OR A PREVIOUSLY APPROVED EQUAL.
2. THE BOX HOUSING THE INTEGRATED STAINLESS STEEL CURB STOP/CHECK VALVE ASSEMBLY SHALL BE A RHINO MB-17 WITH TRAFFIC RATED LID MARKED SEWER OR PREVIOUSLY APPROVED EQUAL.
3. SEE WATER AND SEWER ORDINANCE 2-16-8(2)(d) FOR OWNER INSTALLATION RESPONSIBILITIES.

PUMPING SYSTEM TO BE A COMPLETELY FACTORY ASSEMBLED SIMPLEX GRINDER PUMPING STATION SPECIFICALLY DESIGNED FOR USE IN LOW PRESSURE SEWER SYSTEMS INCLUDING HOLDING TANK, ANTI-FLOTATION COLLARS, MEDIUM TO HIGH HEAD GRINDER PUMP, WITH LEVEL CONTROL SYSTEM AND CONTROL PANEL. HIGH HEAD GRINDER PUMPS (FLOWS TO 28 GPM AND HEADS TO 200 FEET) MAY BE USED UNIVERSALLY THROUGHOUT THE SYSTEM. DEPENDING UPON THE LOCATION WITHIN THE SYSTEM, MEDIUM HEAD GRINDER PUMPS MAY BE USED AS A COST SAVING MEASURE BUT IN NO CASE SHALL THE MOTOR HORSEPOWER BE LESS THAN 1.0. PUMP MANUFACTURERS SPECIALIZING IN EQUIPMENT USED IN LOW PRESSURE SEWER SYSTEMS CAN PROVIDE THE NECESSARY DESIGN ASSISTANCE IN THE SELECTION OF A SUITABLE PUMP.

CONNECTION DETAIL



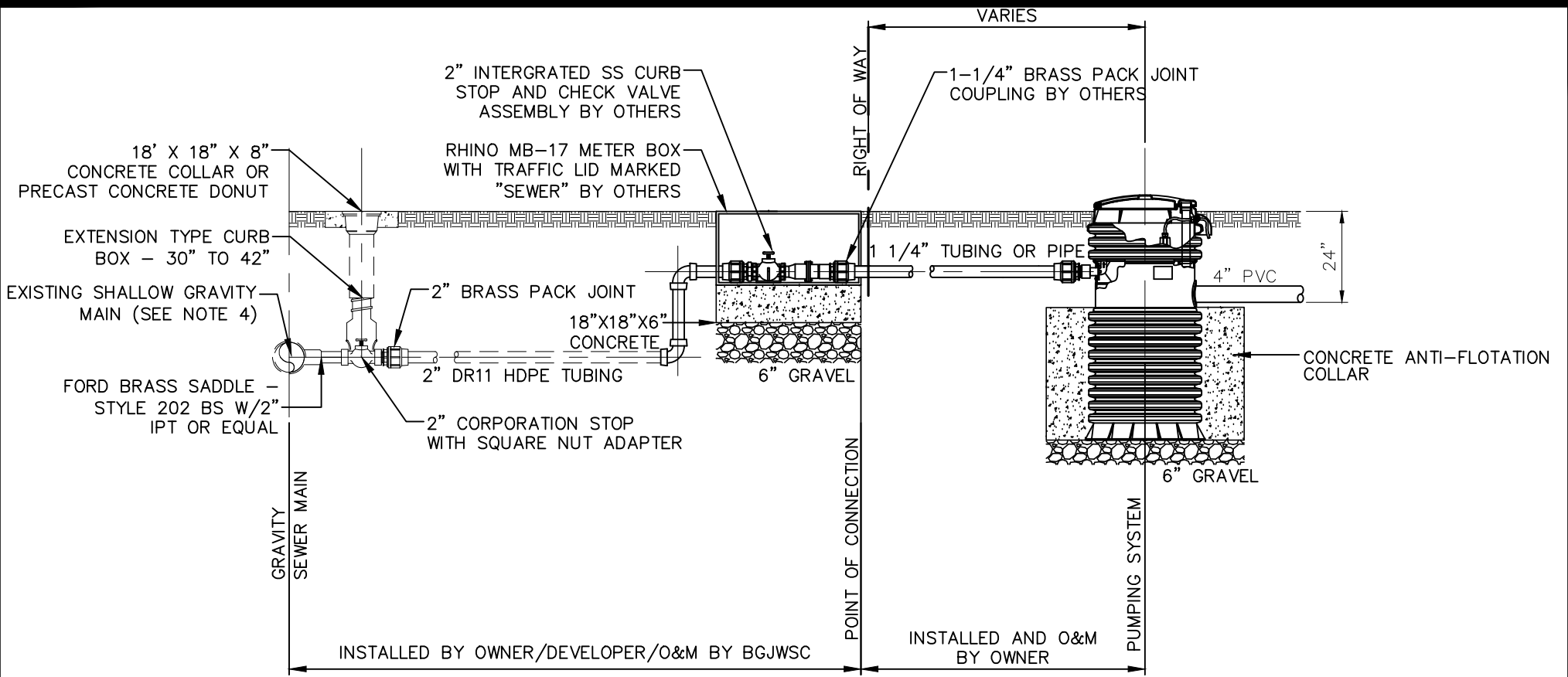
**BRUNSWICK-GLYNN COUNTY
JOINT WATER & SEWER
COMMISSION**

1703 Gloucester Street Phone: (912) 261-7110
Brunswick, Georgia 31520 Fax: (912) 261-7178
Website: www.bgjwsc.org

**LOW PRESSURE SYSTEM
ON-SITE SERVICE CONNECTION**

JWSC STANDARD DETAIL 4-7

Date: AUGUST 2022



NOTES:

1. THE 2" INTEGRATED STAINLESS STEEL CURB STOP/CHECK VALVE ASSEMBLY SHALL BE E/ONE PART NUMBER NC0443P01, NC0517G01 OR A PREVIOUSLY APPROVED EQUAL.
2. THE BOX HOUSING THE INTEGRATED STAINLESS STEEL CURB STOP/CHECK VALVE ASSEMBLY SHALL BE A RHINO MB-17 WITH TRAFFIC RATED LID MARKED SEWER OR PREVIOUSLY APPROVED EQUAL.
3. SEE WATER AND SEWER ORDINANCE 2-16-8(2)(d) FOR OWNER INSTALLATION RESPONSIBILITIES.
4. THIS APPLICATION IS FOR LPFM CONNECTIONS TO GRAVITY MAINS WITH INADEQUATE COVER TO INSTALL A SANITARY SEWER SERVICE LATERAL PER JWSC DETAIL 3-8A

PUMPING SYSTEM TO BE A COMPLETELY FACTORY ASSEMBLED SIMPLEX GRINDER PUMPING STATION SPECIFICALLY DESIGNED FOR USE IN LOW PRESSURE SEWER SYSTEMS INCLUDING HOLDING TANK, ANTI-FLOTATION COLLARS, MEDIUM TO HIGH HEAD GRINDER PUMP, WITH LEVEL CONTROL SYSTEM AND CONTROL PANEL. HIGH HEAD GRINDER PUMPS (FLOWS TO 28 GPM AND HEADS TO 200 FEET) MAY BE USED UNIVERSALLY THROUGHOUT THE SYSTEM. DEPENDING UPON THE LOCATION WITHIN THE SYSTEM, MEDIUM HEAD GRINDER PUMPS MAY BE USED AS A COST SAVING MEASURE BUT IN NO CASE SHALL THE MOTOR HORSEPOWER BE LESS THAN 1.0. PUMP MANUFACTURERS SPECIALIZING IN EQUIPMENT USED IN LOW PRESSURE SEWER SYSTEMS CAN PROVIDE THE NECESSARY DESIGN ASSISTANCE IN THE SELECTION OF A SUITABLE PUMP.

CONNECTION DETAIL

**LOW PRESSURE SYSTEM
SERVICE CONNECTION TO GRAVITY MAINS**

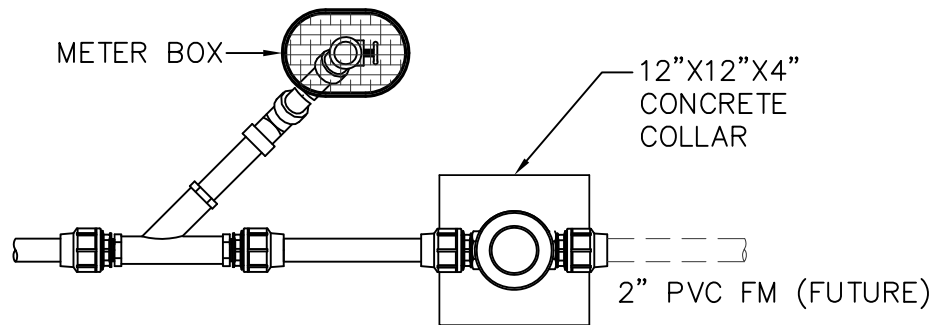
JWSC STANDARD DETAIL 4-7A



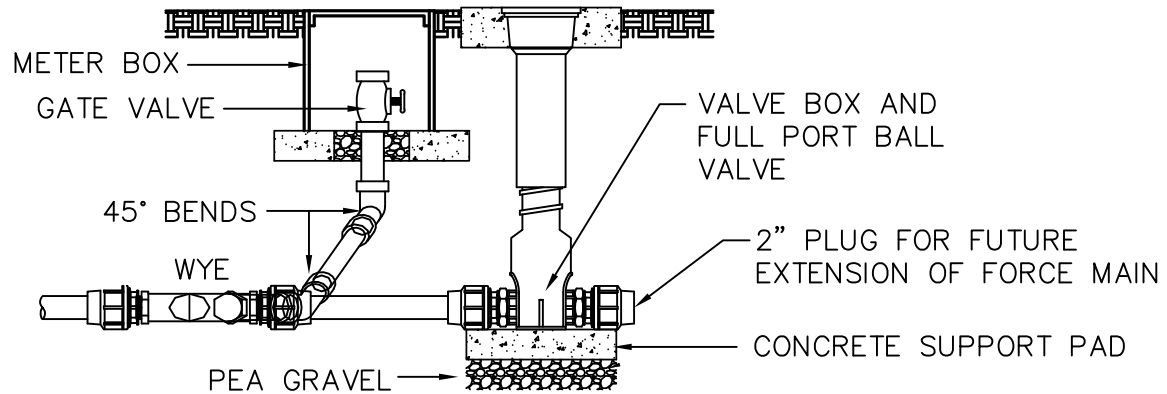
**BRUNSWICK-GLYNN COUNTY
JOINT WATER & SEWER
COMMISSION**

1703 Gloucester Street Phone: (912) 261-7110
 Brunswick, Georgia 31520 Fax: (912) 261-7178
 Website: www.bgjwsc.org

Date: AUGUST, 2022



PLAN VIEW



SECTION



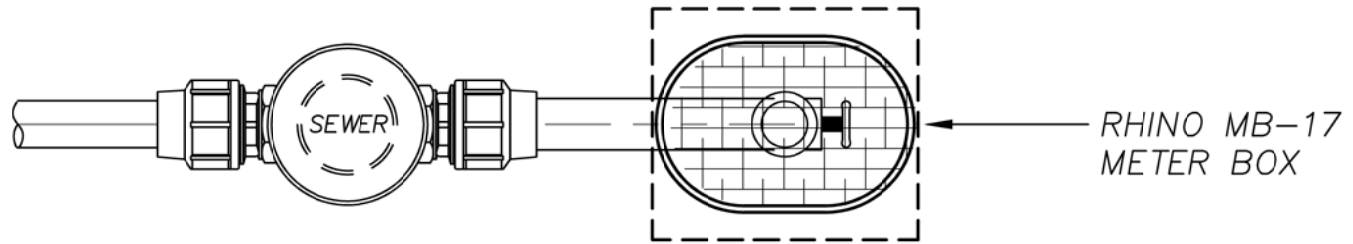
**BRUNSWICK-GLYNN COUNTY
JOINT WATER & SEWER
COMMISSION**

700 Gloucester Street, Suite 300 Phone: (912) 261-7110
Brunswick, Georgia 31520 Fax: (912) 261-7178
Website: www.bgjwsc.org

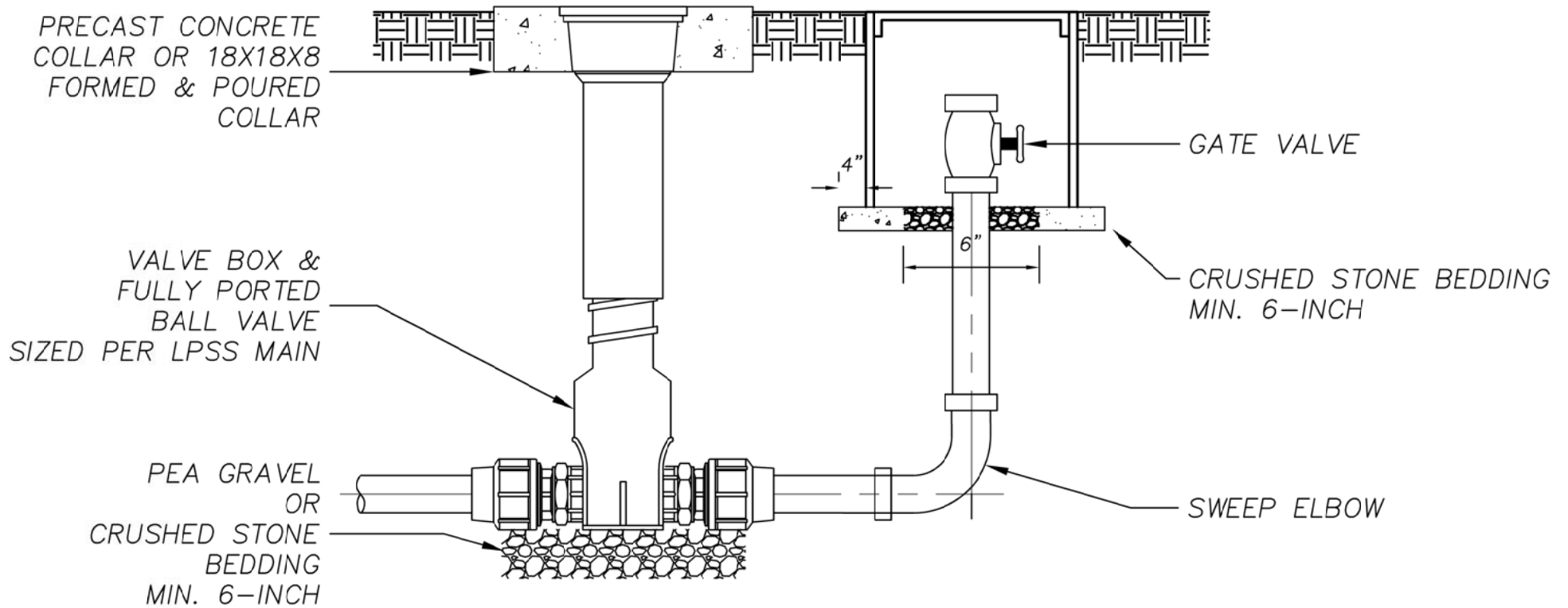
LOW PRESSURE SYSTEM FLUSH CONNECTION

JWSC STANDARD DETAIL 4-8

Date: March 17, 2009



PLAN VIEW



SECTION

NOT TO SCALE



**BRUNSWICK-GLYNN COUNTY
JOINT WATER & SEWER
COMMISSION**

1703 Gloucester Street
Brunswick, Georgia 31520

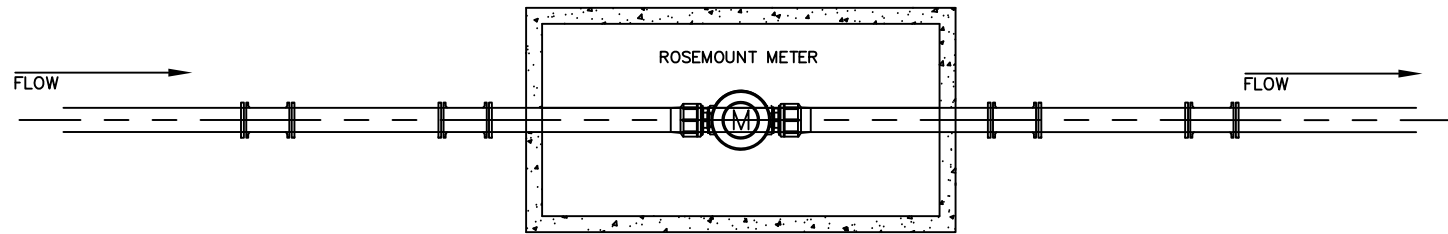
Phone: (912) 261-7110
Fax: (912) 261-7178

Website: www.bgiwsc.org

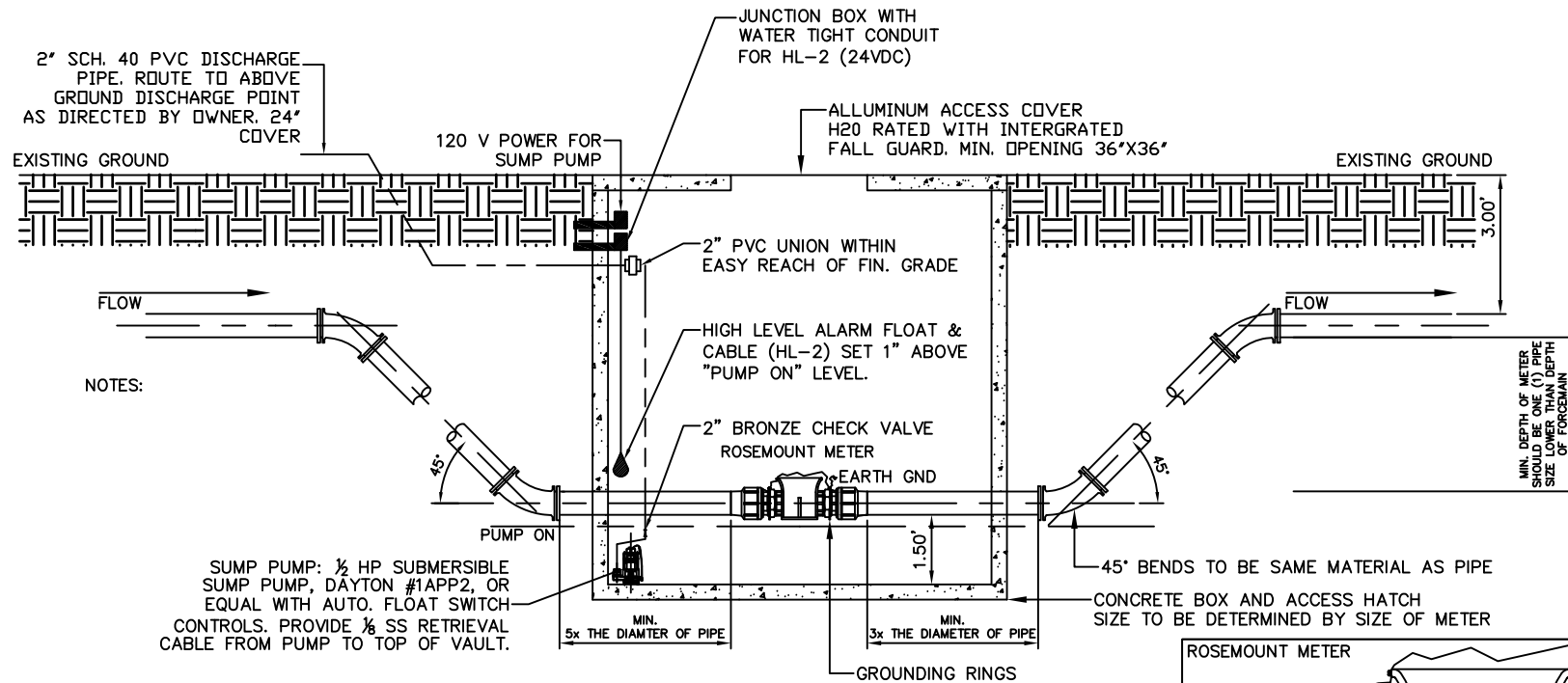
TYPICAL TERMINAL FLUSH CONNECTION

JWSC STANDARD DETAIL 4-8A

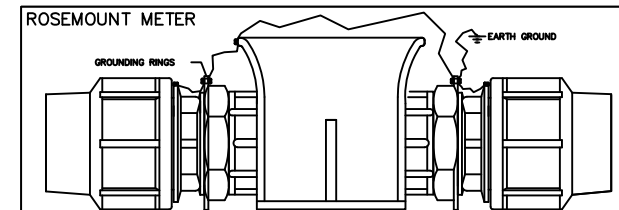
Date: APRIL, 2017



PLAN VIEW



SECTION



BRUNSWICK-GLYNN COUNTY
JOINT WATER & SEWER
COMMISSION

1703 Gloucester Street
Brunswick, Georgia 31520

Phone: (912) 261-7110
Fax: (912) 261-7178

Website: www.bgjwsc.org

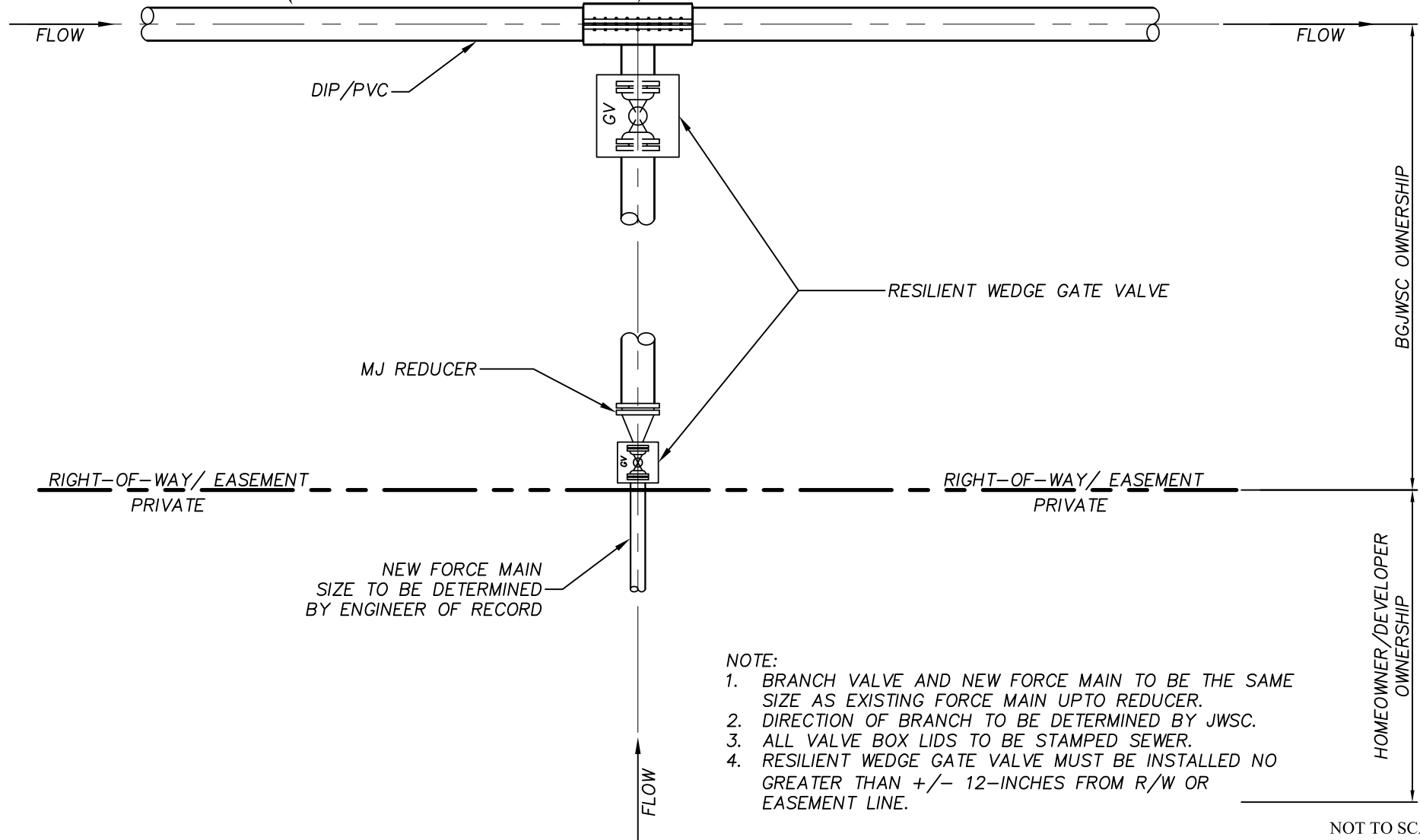
ROSEMOUNT METER
DETAIL

JWSC STANDARD DETAIL 4-9

Date: JUNE 2018

EXISTING JWSC FORCE MAIN
(3-INCHES OR LARGER)

SS FLANGED TAPPING SLEEVE



RESILIENT WEDGE GATE VALVE

MJ REDUCER

RIGHT-OF-WAY/ EASEMENT
PRIVATE

RIGHT-OF-WAY/ EASEMENT
PRIVATE

NEW FORCE MAIN
SIZE TO BE DETERMINED
BY ENGINEER OF RECORD

BGJWSC OWNERSHIP

HOMEOWNER/DEVELOPER
OWNERSHIP

NOTE:

1. BRANCH VALVE AND NEW FORCE MAIN TO BE THE SAME SIZE AS EXISTING FORCE MAIN UPTO REDUCER.
2. DIRECTION OF BRANCH TO BE DETERMINED BY JWSC.
3. ALL VALVE BOX LIDS TO BE STAMPED SEWER.
4. RESILIENT WEDGE GATE VALVE MUST BE INSTALLED NO GREATER THAN +/- 12-INCHES FROM R/W OR EASEMENT LINE.

NOT TO SCALE



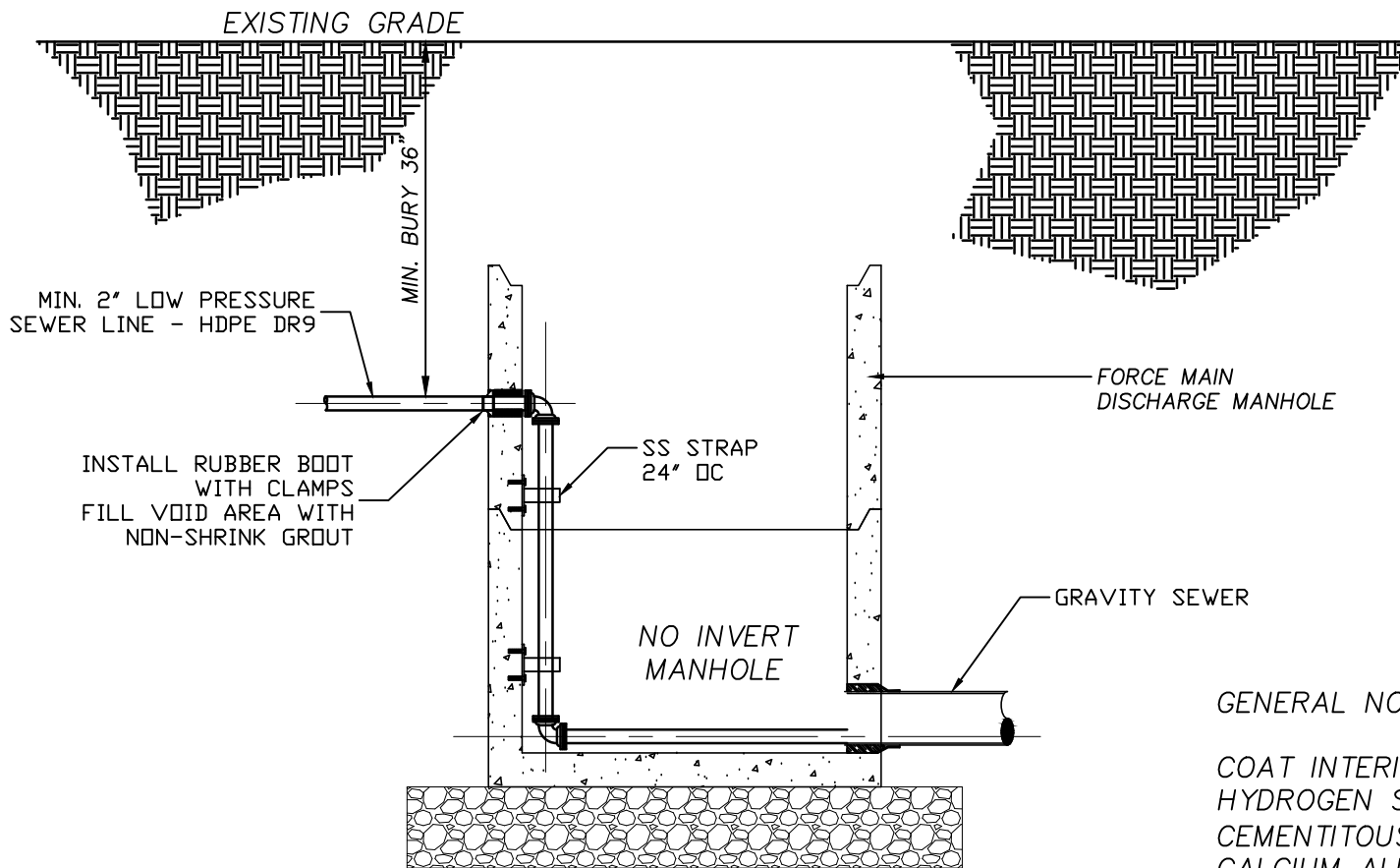
**BRUNSWICK-GLYNN COUNTY
JOINT WATER & SEWER
COMMISSION**

1703 Gloucester Street Phone: (912) 261-7110
Brunswick, Georgia 31520 Fax: (912) 261-7178
Website: www.bgjwsc.org

FORCE MAIN CONNECTION TO EXISTING FORCEMAIN - 3" OR LARGER

JWSC STANDARD DETAIL 4-10

Date: SEPTEMBER 2019



GENERAL NOTES:
 COAT INTERIOR OF THE MANHOLE WITH HYDROGEN SULFIDE RESISTANT CEMENTITIOUS PRODUCT(S) CONTAINING CALCIUM ALUMINATES.

NOT TO SCALE



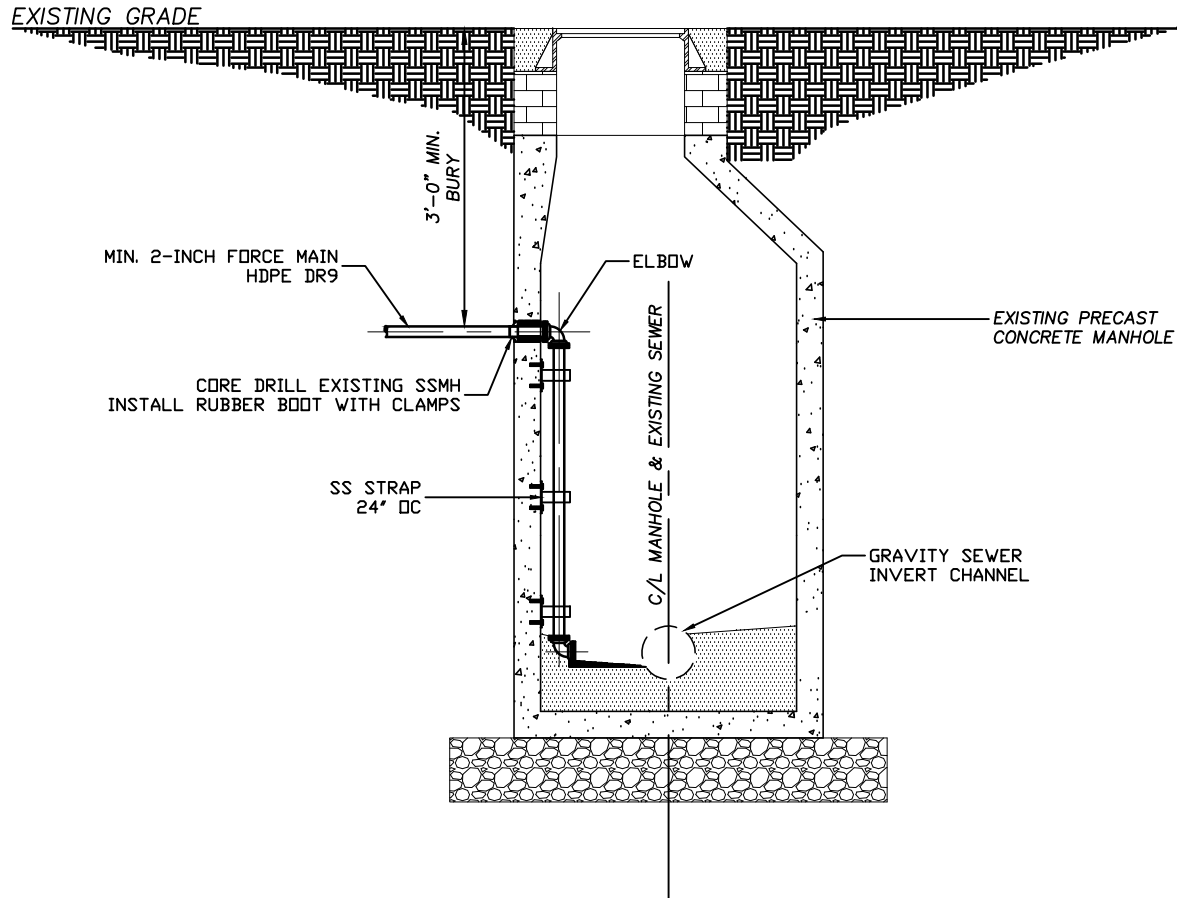
**BRUNSWICK-GLYNN COUNTY
 JOINT WATER & SEWER
 COMMISSION**

1703 Gloucester Street Phone: (912) 261-7110
 Brunswick, Georgia 31520 Fax: (912) 261-7178
 Website: www.bgiwsc.org

**TYP. DROP CONNECTION LPFM IN DEAD
 END MANHOLE**

JWSC STANDARD DETAIL 4-11

Date: DECEMBER, 2019



GENERAL NOTES:

1. CORE OPENING IN EXISTING WALL FOR NEW FORCEMAIN. FILL ANNULAR SPACE AROUND PIPE WITH NON-SHRINK GROUT
2. PROVIDE FLEXIBLE RUBBER BOOT, KOR-N-SEAL OR EQUAL
3. PROVIDE MJ 90° BEND WITH RESTRAINED JOINTS WHERE SHOWN
4. PROVIDE MJ 90° BASE BEND WITH RESTRAINED JOINTS WHERE SHOWN
5. MODIFY AND REPAIR MANHOLE INVERTS AS REQUIRED TO ACCOMMODATE FORCEMAIN CONNECTIONS
6. CONNECT PIPE TO WALL OF MANHOLE WITH STAINLESS STEEL SUPPORT AND ANCHOR BOLTS
7. COAT INTERIOR OF THE MANHOLE WITH A HYDROGEN SULFIDE RESISTANT CEMENTITIOUS PRODUCT CONTAINING CALCIUM ALUMINATES

NOT TO SCALE



**BRUNSWICK-GLYNN COUNTY
JOINT WATER & SEWER
COMMISSION**

1703 Gloucester Street
Brunswick, Georgia 31520

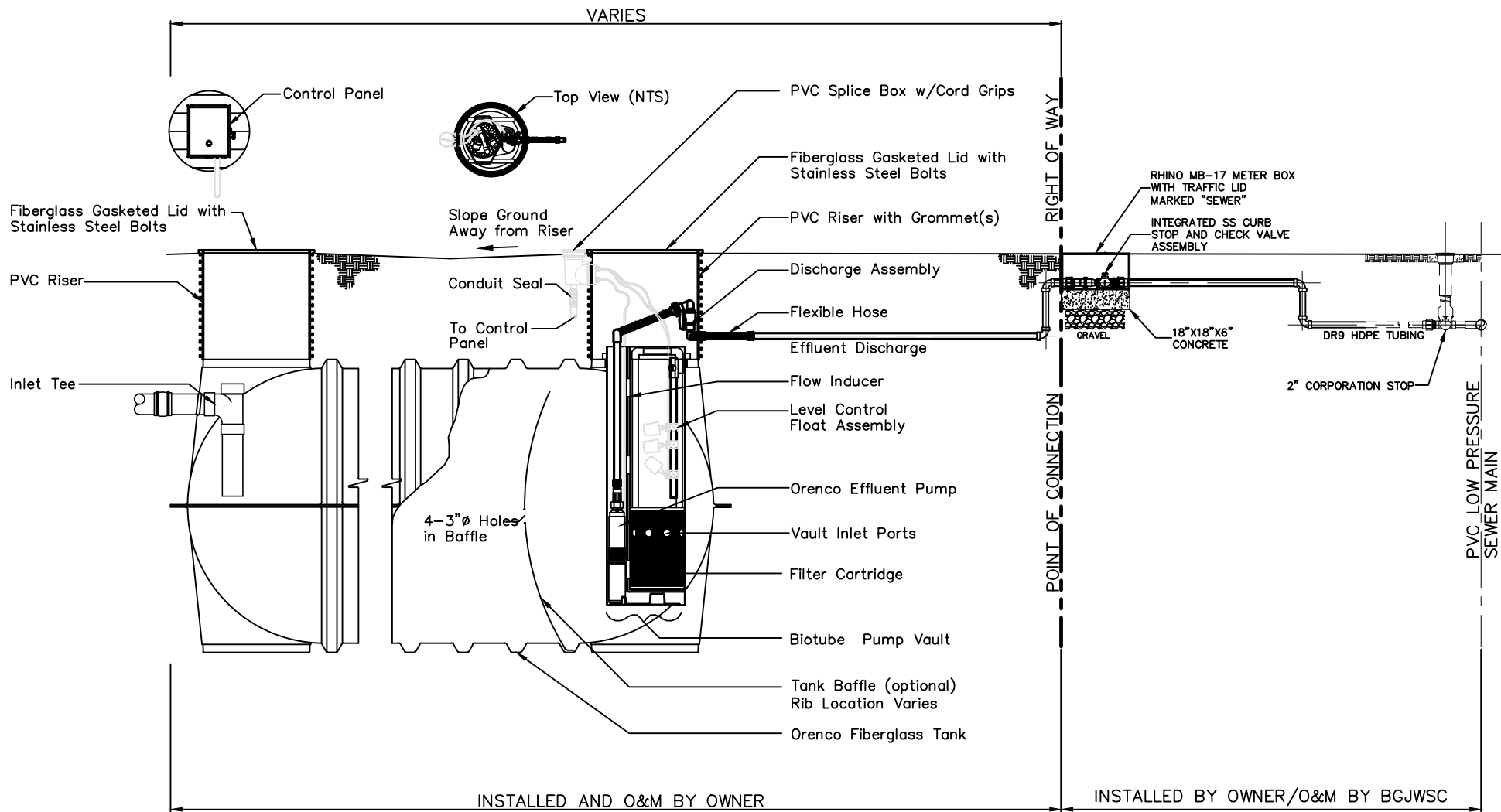
Phone: (912) 261-7110
Fax: (912) 261-7178

Website: www.bgjwsc.org

LPFM INSIDE DROP MANHOLE SECTION

JWSC STANDARD DETAIL 4-11A

Date: DECEMBER, 2019



NOTES:

1. THE INTEGRATED STAINLESS STEEL CURB STOP/CHECK VALVE ASSEMBLY SHALL BE E/ONE PART NUMBER NB0184PXX, NC0193GXX OR A PREVIOUSLY APPROVED EQUAL.
2. THE BOX HOUSING THE INTEGRATED STAINLESS STEEL CURB STOP/CHECK VALVE ASSEMBLY SHALL BE A RHINO MB-17 WITH TRAFFIC RATED LID MARKED SEWER OR PREVIOUSLY APPROVED EQUAL.
3. SEE WATER AND SEWER ORDINANCE 2-16-8(2)(d) FOR OWNER INSTALLATION RESPONSIBILITIES.



**BRUNSWICK-GLYNN COUNTY
JOINT WATER & SEWER
COMMISSION**

1703 Gloucester Street Phone: (912) 261-7110
 Brunswick, Georgia 31520 Fax: (912) 261-7178
 Website: www.bgjwsc.org

**FIBERGLASS TANK WITH EFFLUENT
PUMPING SYSTEM - SIMPLEX**

JWSC STANDARD DETAIL 4-12

Date: MARCH 2022