

GENERAL NOTES:

PRECAST CONCRETE TANKS TO BE MANUFACTURED IN ACCORDANCE WITH ASTM C1613 "STANDARD SPECIFICATION FOR PRECAST CONCRETE GREASE INTERCEPTOR TANKS.

THE INTERIOR SURFACES OF THE TANK SHALL BE SEALED WITH CONSEAL CS55 OR AN EQUIVALENT MOISTURE BARRIER SEAL. THE TANK INTERIOR SHALL BE LIGHT GRAY OR WHITE IN COLOR. COATING SHALL BE A MIN. OF 5MM IN THICKNESS.

ALL PIPE AND FITTINGS SHALL BE TYPE I SCHEDULE 40 PVC MEETING THE REQUIREMENTS OF ASTM D2665.

INLET AND OUTLET PIPES SHALL BE SEALED WITH A CAST IN PLACE LOW-PRESSURE PIPE SEAL OR EQUIVALENT NEOPRENE GASKET, FLEXIBLE SILICON ADHESIVE OR CEMENT.

THE SAMPLE PORT SHALL CONSIST OF A 6"X4" OR 6"X6" PVC CROSS DEPENDING UPON THE OUTLET PIPE SIZE. VALVE BOX TO HAVE THE WORD "SEWER" STAMPED ON THE LID.

ACCESS TUBES OR RISERS SHALL BE HIGH DENSITY POLYETHYLENE (HDPE) PIPE CONFORMING TO ASTM D1248 (TYPE III C, CATEGORY 5, P34) OR PRECAST CONCRETE SEALED AS NOTED ABOVE.

MANHOLE FRAME AND COVERS SHALL BE MANUFACTURED FROM DUCTILE IN ACCORDANCE WITH ISO 1083, RATED AT H20 LOADING.

SEE SECTION 5 OF THE JWSC STANDARDS FOR WATER AND SEWER DESIGN AND CONSTRUCTION.

12" #57 STONE BEDDING WRAPPED IN CONTECH WOVEN GEOTEXTILE, TYPE C-300, OR APPROVED EQUAL TYP.

NOT TO SCALE



**BRUNSWICK-GLYNN COUNTY
JOINT WATER & SEWER
COMMISSION**

1703 Gloucester Street
Brunswick, Georgia 31520

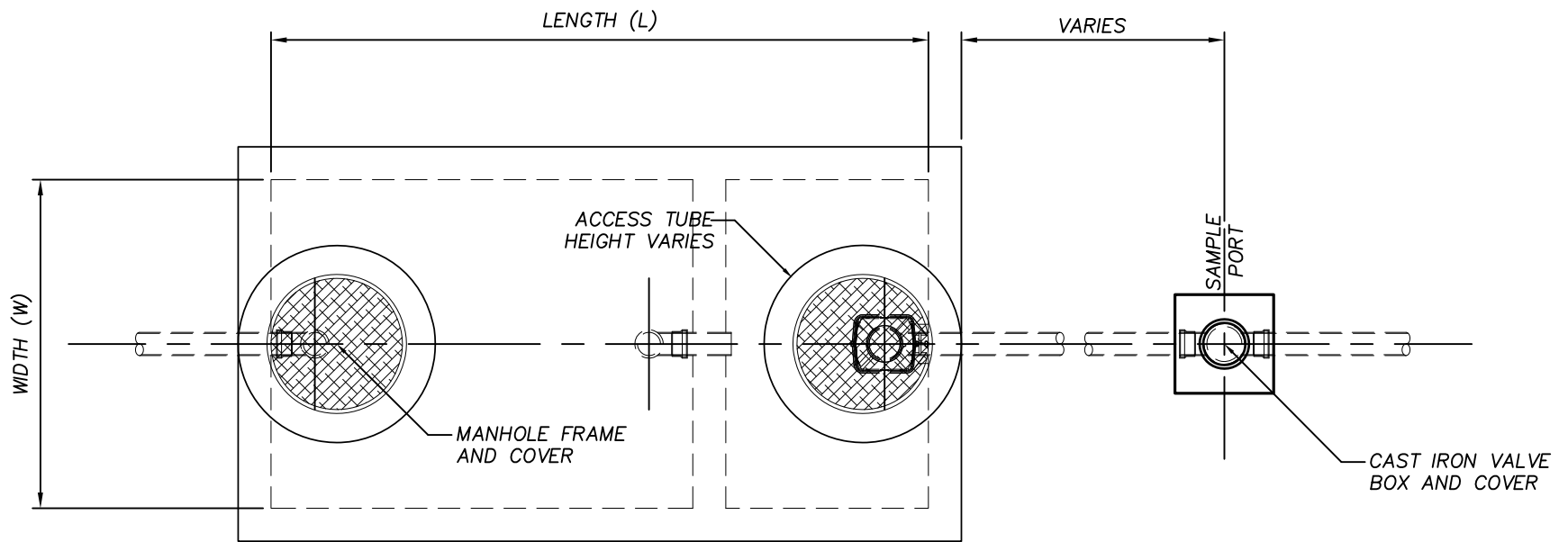
Website: www.bgjwsc.org

Phone: (912) 261-7110
Fax: (912) 261-7178

PRECAST GREASE TRAP - GENERAL NOTES

JWSC STANDARD DETAIL 5-1

Date: JANUARY 2022



NOT TO SCALE



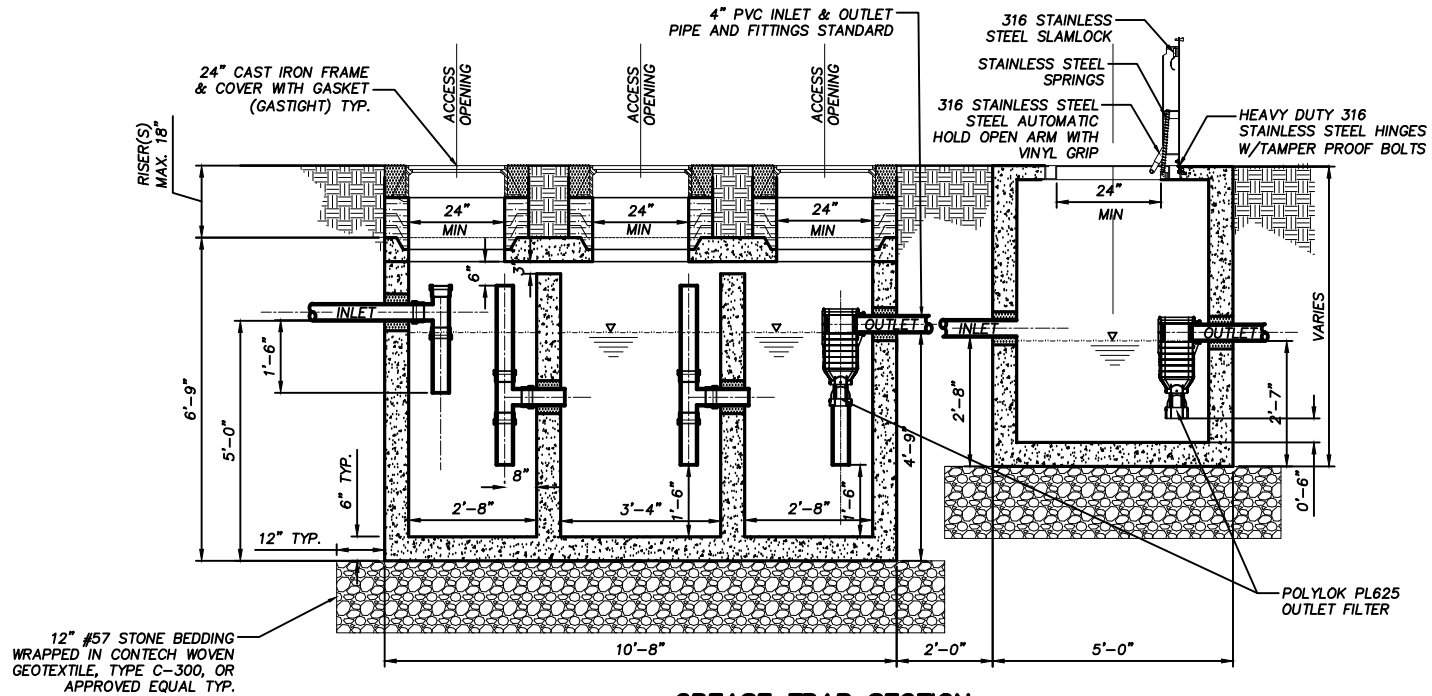
**BRUNSWICK-GLYNN COUNTY
JOINT WATER & SEWER
COMMISSION**

700 Gloucester Street, Suite 300 Phone: (912) 261-7110
Brunswick, Georgia 31520 Fax: (912) 261-7178
Website: www.bgjwsc.org

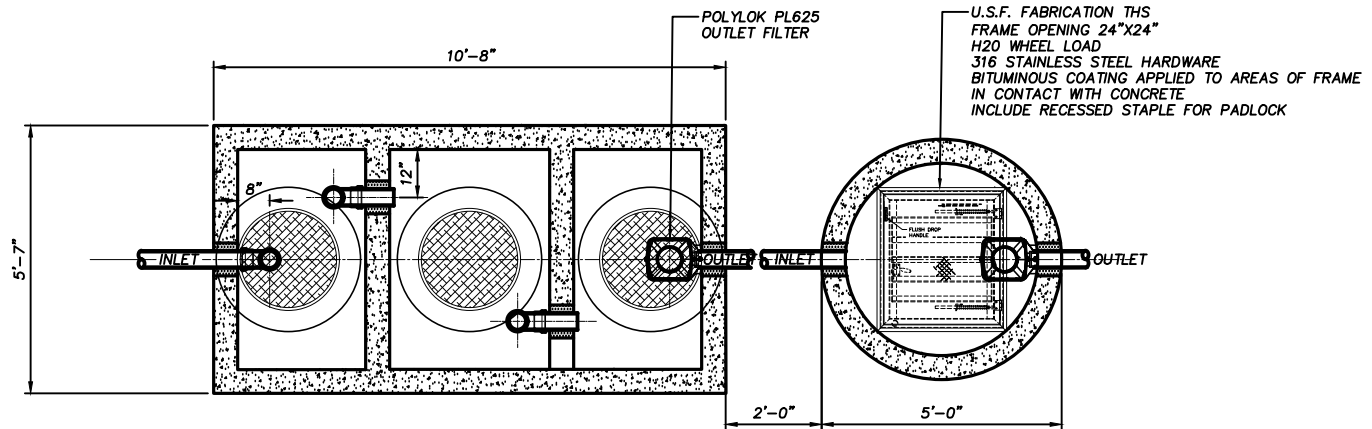
PRECAST GREASE TRAP - TOP PLAN

JWSC STANDARD DETAIL 5-2

Date: AUGUST 2011



GREASE TRAP SECTION



GREASE TRAP WALL PLAN

NOT TO SCALE

GENERAL NOTES:

GRADE RINGS/RISERS MODEL NUMBERS:
 3-INCH: 2432 GR-03 GRADE RING
 6-INCH: 2432 GR-06 GRADE RING
 12-INCH: 2432 GR-12 GRADE RING



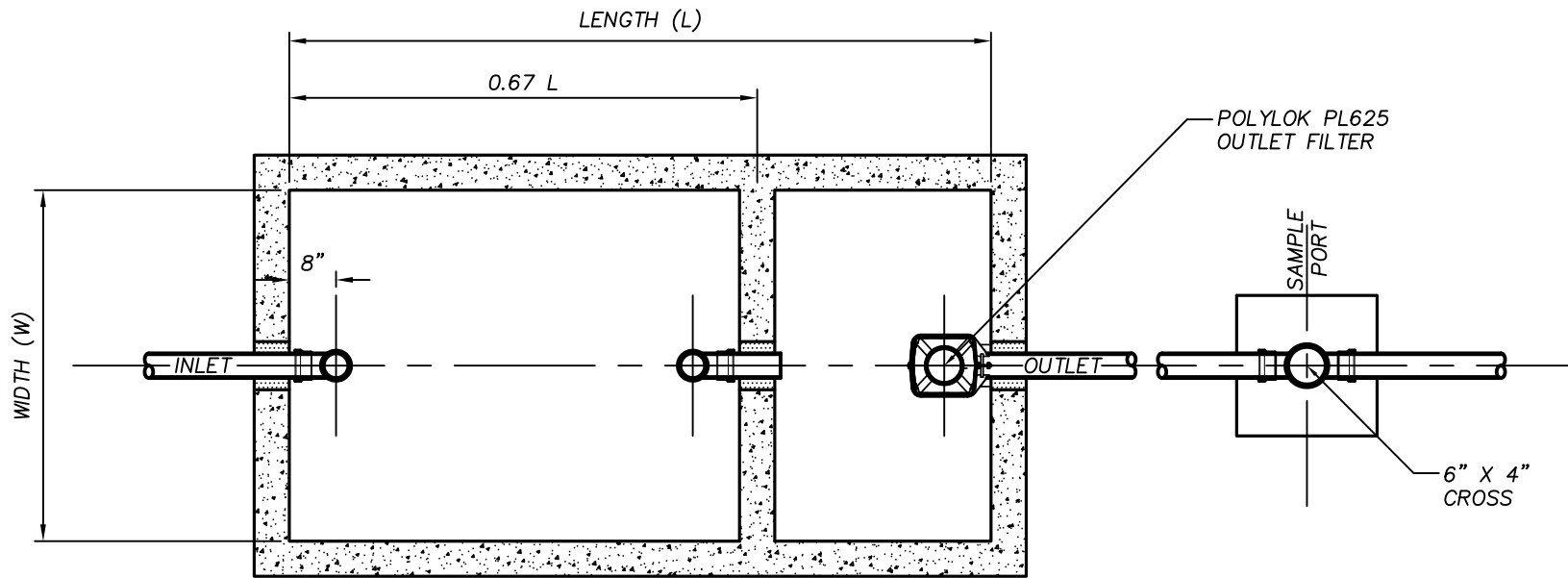
**BRUNSWICK-GLYNN COUNTY
 JOINT WATER & SEWER
 COMMISSION**

1703 Gloucester Street Phone: (912) 261-7110
 Brunswick, Georgia 31520 Fax: (912) 261-7178
 Website: www.bgjwsc.org

PRECAST GREASE TRAP - 1,500 GALLON

JWSC STANDARD DETAIL 5-2A

Date: JANUARY 2022



NOT TO SCALE



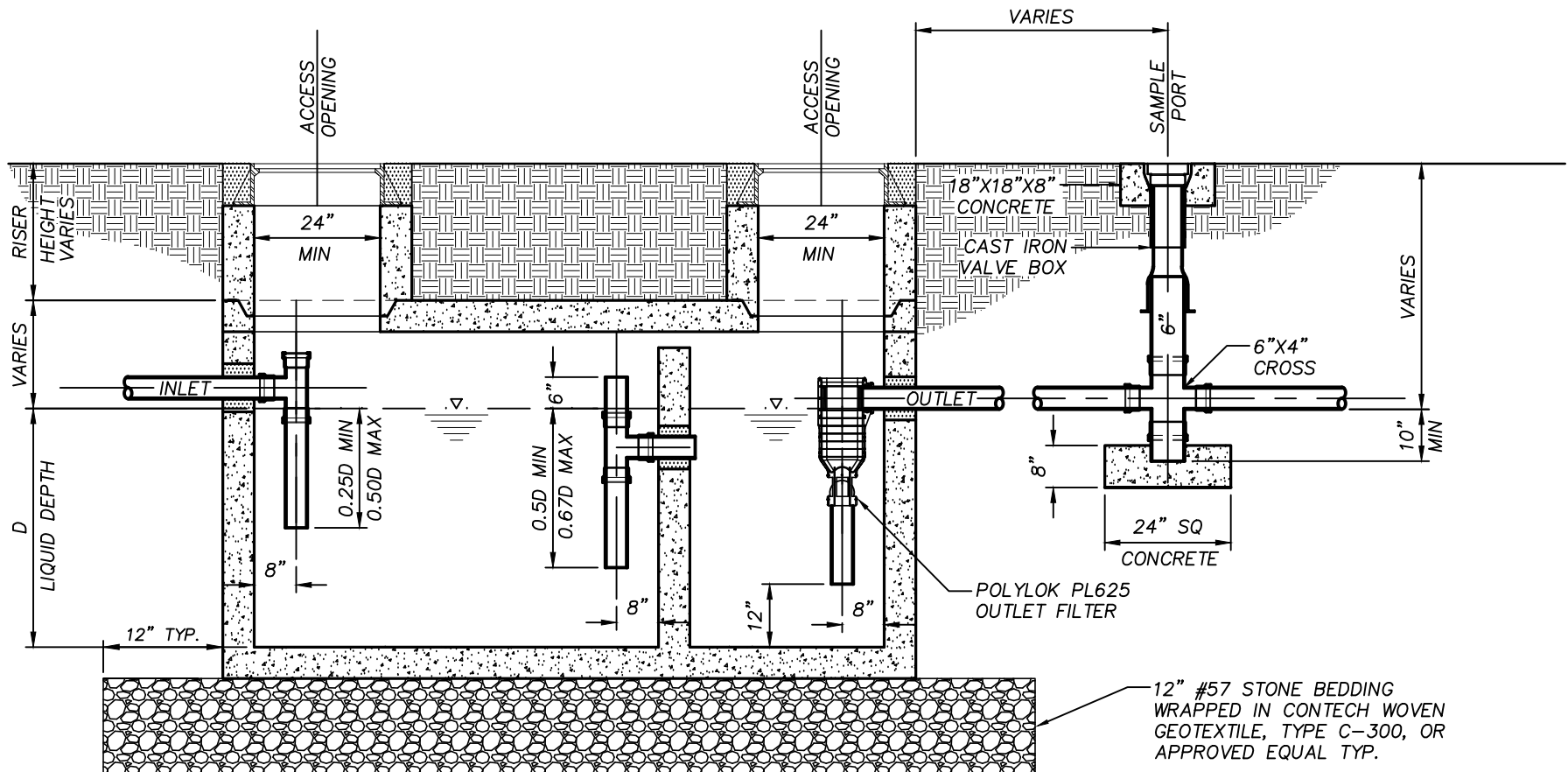
**BRUNSWICK-GLYNN COUNTY
JOINT WATER & SEWER
COMMISSION**

700 Gloucester Street, Suite 300 Phone: (912) 261-7110
 Brunswick, Georgia 31520 Fax: (912) 261-7178
 Website: www.bgjwsc.org

PRECAST GREASE TRAP - WALL PLAN

JWSC STANDARD DETAIL 5-3

Date: AUGUST 2011



12" #57 STONE BEDDING
WRAPPED IN CONTECH WOVEN
GEOTEXTILE, TYPE C-300, OR
APPROVED EQUAL TYP.

NOT TO SCALE



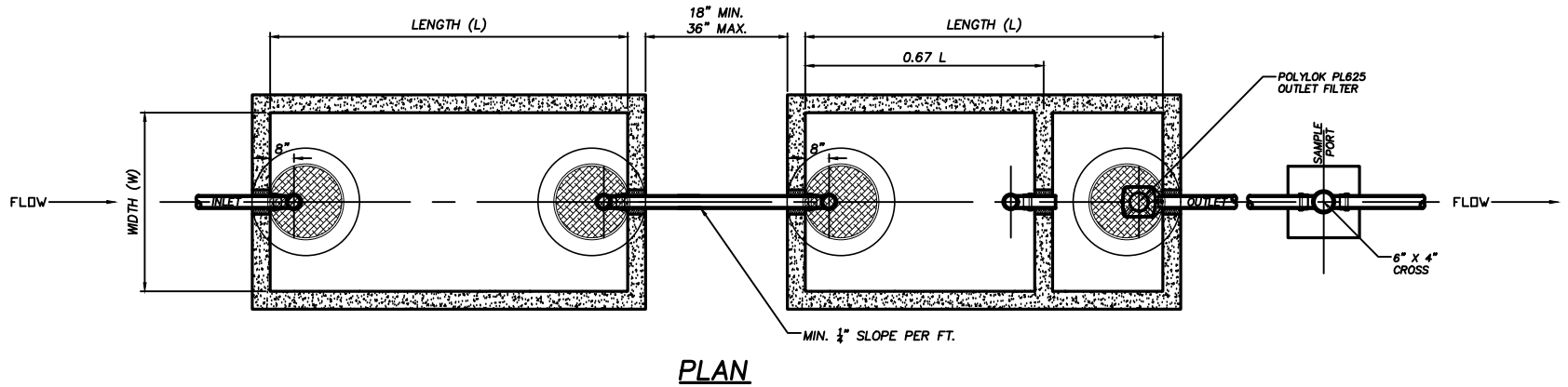
**BRUNSWICK-GLYNN COUNTY
JOINT WATER & SEWER
COMMISSION**

1703 Gloucester Street Phone: (912) 261-7110
Brunswick, Georgia 31520 Fax: (912) 261-7178
Website: www.bgjwsc.org

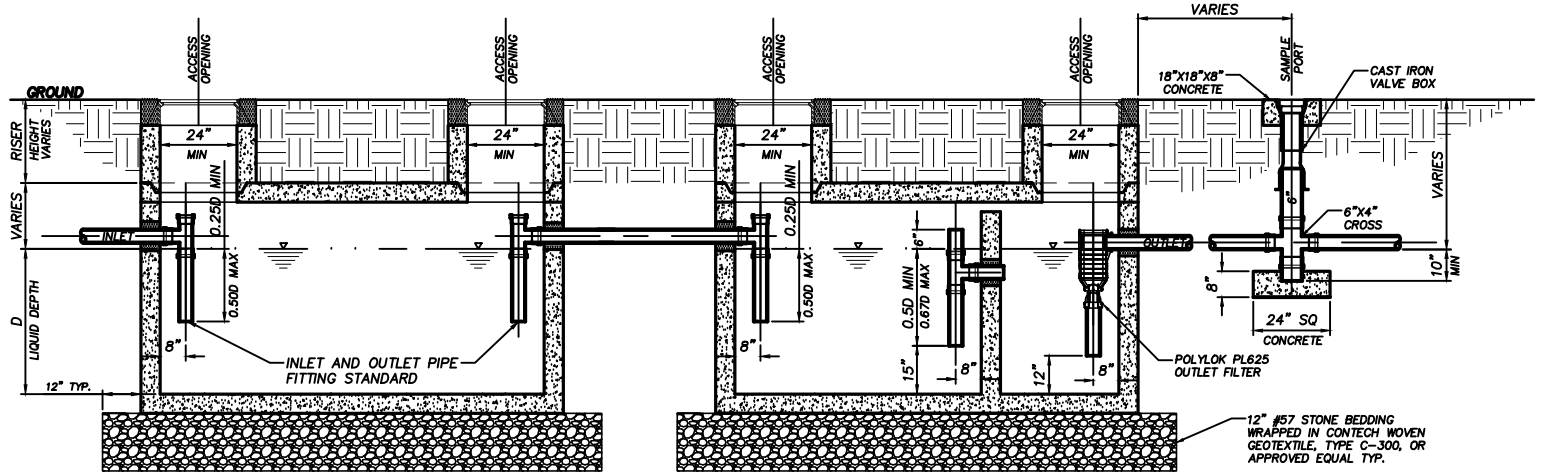
PRECAST GREASE TRAP - SECTION

JWSC STANDARD DETAIL 5-4

Date: JANUARY 2022



PLAN



SECTION

NOT TO SCALE

- GENERAL NOTES:**
- PRECAST CONCRETE TANKS TO BE MANUFACTURED IN ACCORDANCE WITH ASTM C1613 "STANDARD SPECIFICATION FOR PRECAST CONCRETE GREASE INTERCEPTOR TANKS.
 - THE INTERIOR SURFACES OF THE TANK SHALL BE SEALED WITH CONSEAL CS55 OR AN EQUIVALENT MOISTURE BARRIER SEAL. THE TANK INTERIOR SHALL BE LIGHT GRAY OR WHITE IN COLOR.
 - ALL PIPE AND FITTINGS SHALL BE TYPE I SCHEDULE 40 PVC MEETING THE REQUIREMENTS OF ASTM D2065.
 - INLET AND OUTLET PIPES SHALL BE SEALED WITH A CAST IN PLACE LOW-PRESSURE PIPE SEAL OR EQUIVALENT NEOPRENE GASKET, FLEXIBLE SILICON ADHESIVE OR CEMENT.
 - THE SAMPLE PORT SHALL CONSIST OF A 6"x4" OR 6"x6" PVC CROSS DEPENDING UPON THE OUTLET PIPE SIZE. VALVE BOX TO HAVE THE WORD "SEWER" STAMPED ON THE LID.
 - ACCESS TUBES OR RISERS SHALL BE HIGH DENSITY POLYETHYLENE (HDPE) PIPE CONFORMING TO ASTM D1248 (TYPE III C, CATEGORY 5, P34) OR PRECAST CONCRETE SEALED AS NOTED ABOVE.
 - MANHOLE FRAME AND COVERS SHALL BE MANUFACTURED FROM DUCTILE IN ACCORDANCE WITH ISO 1083, RATED AT H20 LOADING.
 - SEE SECTION 5 OF THE JWSC STANDARDS FOR WATER AND SEWER DESIGN AND CONSTRUCTION.
 - 12" #57 STONE BEDDING WRAPPED IN CONTECH WOVEN GEOTEXTILE, TYPE C-300, OR APPROVED EQUAL TYP.



**BRUNSWICK-GLYNN COUNTY
JOINT WATER & SEWER
COMMISSION**

1703 Gloucester Street Phone: (912) 261-7110
 Brunswick, Georgia 31520 Fax: (912) 261-7178
 Website: www.bgjwsc.org

PRECAST GREASE TRAP - IN SERIES

JWSC STANDARD DETAIL 5-5

Date: JAN 2022