

CANAL ROAD TO GLYNCO PARKWAY WATER MAIN EXTENSION

DECEMBER, 2020

BRUNSWICK-GLYNN
JOINT WATER & SEWER COMMISSION
JWSC PROJECT #704



COMMISSION MEMBERS:

MR. BEN TURNIPSEED PE, CHAIRMAN
MR. BOB DUNCAN, VICE CHAIRMAN
MR. CHARLES COOK
MR. DONALD M. ELLIOTT
MR. CORNELL L. HARVEY (CITY OF BWK, MAYOR)
MR. WAYNE NEAL (GLYNN CO. BOC)
MR. TRIPP STEPHENS

EXECUTIVE DIRECTOR:

MR. ANDREW BURROUGHS, PE



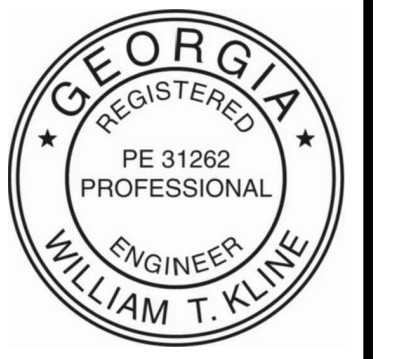
VICINITY MAP

SCALE: NTS

OWNER:
BRUNSWICK - GLYNN COUNTY
JOINT WATER AND SEWER COMMISSION
1703 GLOUCESTER STREET
BRUNSWICK, GEORGIA 31520
24-HOUR CONTACT: TODD KLINE, PE, DIRECTOR OF ENGINEERING
EMERGENCY NUMBER: (912) 634-0258
PLANNING AND CONSTRUCTION DIVISION: (912) 261-7126

DRAWING INDEX	
SHEET NO.	SHEET TITLE
T-1	TITLE SHEET
G-1	GENERAL CONSTRUCTION NOTES
P-1	PROPOSED PLAN
P-2	PROPOSED PLAN
P-3	PROPOSED PLAN
P-4	PROPOSED PLAN
P-5	PROPOSED PLAN
P-6	PROPOSED PLAN
P-7	PROPOSED PLAN
P-8	PROPOSED PLAN
P-9	PROPOSED PLAN
P-10	PROPOSED PLAN
P-11	JWSC DETAILS

NOTES:
CONTRACTOR SHALL NOTIFY BGJWSC PLANNING AND CONSTRUCTION DIVISION 48 HOURS BEFORE STARTING WORK ON THIS PROJECT.



BRUNSWICK-GLYNN COUNTY
JOINT WATER & SEWER COMMISSION
PLANNING & CONSTRUCTION DIVISION
1703 Gloucester Street
Brunswick, Georgia 31520
(912) 261-7110 Phone
(912) 261-7178 Fax
www.bgjwsc.org

NO.	DATE	COMMENTS
1	02/17/2021	PLAN REVISIONS PER EPD
-	-	-
-	-	-
-	-	-
-	-	-

CANAL ROAD TO GLYNCO PARKWAY
WATER MAIN EXTENSION
BRUNSWICK-GLYNN COUNTY JOINT WATER & SEWER COMMISSION
TITLE SHEET

FILE NO.: NM-PROJ. 704
DATE: DEC 10, 2020
SCALE: AS SHOWN
DRAWN BY: HP



CALL BEFORE YOU DIG!
At least 72 hours prior to commencement of the work, the Contractor is responsible for calling the Utilities Protection Center (UPC) at 1-800-282-7411, to request underground utility locate service.

SHEET NO.:
T-1
OF 1

GENERAL CONSTRUCTION NOTES

- ALL CONSTRUCTION SHALL CONFORM WITH THE STANDARDS FOR WATER AND SEWER DESIGN AND CONSTRUCTION OF THE BRUNSWICK - GLYNN COUNTY JOINT WATER AND SEWER COMMISSION (JWSC) DATED FEBRUARY, 2012. IN THE EVENT OF A DISCREPANCY BETWEEN THESE CONSTRUCTION PLANS AND THE AFOREMENTIONED STANDARDS, THESE CONSTRUCTION PLANS SHALL TAKE PRECEDENCE.
- THE MINIMUM HORIZONTAL AND VERTICAL SEPARATION BETWEEN WATER LINES, SEWER LINES AND STORM DRAINS SHALL CONFORM TO THE LATEST GEORGIA EPD REQUIREMENTS.
- A MINIMUM SEPARATION OF 20' OR TWO TIMES THE DEPTH OF THE MAIN, WHICHEVER IS GREATER, SHALL BE MAINTAINED FROM ALL BUILDINGS, FOUNDATIONS AND TOP OF BANK OF ALL PONDS. ANY DEVIATION FROM THIS REQUIREMENT MUST BE APPROVED IN WRITING BY THE JWSC.
- PRESSURE AND LEAKAGE TESTING SHALL BE PERFORMED IN ACCORDANCE WITH THE STANDARDS FOR WATER AND SEWER DESIGN AND CONSTRUCTION OF THE BRUNSWICK - GLYNN COUNTY JOINT WATER AND SEWER COMMISSION.
- DISINFECTION OF WATER MAINS SHALL BE PERFORMED IN ACCORDANCE WITH THE STANDARDS FOR WATER AND SEWER DESIGN AND CONSTRUCTION OF THE BRUNSWICK - GLYNN COUNTY JOINT WATER AND SEWER COMMISSION.
- AT LEAST 72 HOURS PRIOR TO COMMENCEMENT OF THE WORK, THE CONTRACTOR SHALL NOTIFY THE UTILITIES PROTECTION CENTER (UPC) AT 1-800-282-7411 TO REQUEST UNDERGROUND LOCATE SERVICE.
- THE PROTECTION OF EXISTING UTILITIES SHALL BE SOLELY THE RESPONSIBILITY OF THE CONTRACTOR. THE LOCATION AND SIZE OF EXISTING UTILITIES, IF ANY, SHOWN ON THE CONSTRUCTION PLANS MAY NOT BE COMPLETE OR ACCURATE AS TO HORIZONTAL OR VERTICAL LOCATION. THE EXISTENCE OF BURIED OR OVERHEAD UTILITIES NOT SHOWN SHALL NOT RELIEVE THE CONTRACTOR OF HIS RESPONSIBILITIES UNDER THIS REQUIREMENT. THE CONTRACTOR SHALL EXCAVATE AND VISUALLY VERIFY THE EXISTENCE, SIZE AND LOCATION OF ALL EXISTING UTILITIES. THE CONTRACTOR SHALL INDEMNIFY AND HOLD HARMLESS THE JWSC, THEIR OFFICERS, AGENTS AND EMPLOYEES FROM ANY CLAIMS OR ACTIONS FOR DAMAGE TO ANY EXISTING UTILITY OR ANY LIABILITY WHICH MAY ARISE THERE FROM.
- ALL WORK ON THE GLYNN COUNTY RIGHT-OF WAY OF CANAL ROAD AND GLYNCO PARKWAY REQUIRES A PERMIT FROM THE GLYNN COUNTY PUBLIC WORKS DEPARTMENT. THE CONTRACTOR IS SOLELY RESPONSIBLE FOR OBTAINING SUCH PERMIT AND PAYING ALL REQUIRED FEES PRIOR TO COMMENCEMENT OF THE WORK.
- ALL UTILITY CONSTRUCTION ON THE NORFOLK SOUTHERN RAILROAD RIGHT-OF-WAY REQUIRES A UTILITY ENCROACHMENT PERMIT. THE JWSC WILL OBTAIN SUCH PERMITS. THE CONTRACTOR SHALL PERFORM ALL WORK ON THE NORFOLK SOUTHERN RAILROAD RAILROAD RIGHT-OF-WAY IN ACCORDANCE WITH ALL APPLICABLE REQUIREMENTS OF THE PERMITTING AGENCY.
- THE CONTRACTOR SHALL PREPARE AND FILE THE NOTICE OF INTENT FOR COVERAGE UNDER THE APPLICABLE NPDES GENERAL PERMIT TO DISCHARGE STORMWATER ASSOCIATED WITH CONSTRUCTION ACTIVITY AND PAY ALL REQUIRED FEES. THE CONTRACTOR SHALL BE RESPONSIBLE FOR FULL IMPLEMENTATION OF THE EROSION, SEDIMENTATION AND POLLUTION CONTROL PLAN, INCLUDING RAINFALL MONITORING, INSPECTIONS AND ALL OTHER REQUIREMENTS OF THE PERMIT.
- ALL DISTURBED AREAS SHALL BE RE-VEGETATED IMMEDIATELY AFTER CONSTRUCTION IN A MANNER CONSISTENT WITH THE MANUAL FOR EROSION AND SEDIMENT CONTROL IN GEORGIA. ALL EROSION AND SEDIMENT CONTROLS SHALL BE INSTALLED PRIOR TO OR CONCURRENT WITH THE START OF CONSTRUCTION.
- ANY REFERENCE POINTS, RIGHT-OF-WAY MONUMENTS, PROPERTY CORNERS, BENCHMARKS OR OTHER MONUMENTS DISTURBED AS A RESULT OF CONSTRUCTION SHALL BE RESTORED BY A REGISTERED LAND SURVEYOR LICENSED TO PRACTICE IN THE STATE OF GEORGIA, WITH ALL ASSOCIATED COSTS BORNE BY THE CONTRACTOR. LIKEWISE ALL LANDSCAPING, STREET SIGNS, MAILBOXES, TRAFFIC SIGNS AND OTHER STREET FURNITURE DISTURBED BY CONSTRUCTION OPERATIONS SHALL BE RESTORED BY THE CONTRACTOR TO THEIR ORIGINAL CONDITION WITHOUT ADDITIONAL COMPENSATION.
- EXISTING FENCING ON PRIVATE PROPERTY SHOWN TO BE REMOVED TO FACILITATE THE INSTALLATION OF WATER LINES WITHIN EASEMENT AREAS ACROSS PRIVATE PROPERTY IS TO BE REPLACED WITH NEW FENCING OF LIKE KIND AND MATERIAL TO THE FULL SATISFACTION OF THE PROPERTY OWNER. ACCESS IS TO MAINTAINED AT ALL TIMES. DISTURBED AREAS ARE TO BE FULLY RESTORED TO THEIR ORIGINAL CONDITION.
- EXISTING PAVEMENTS SHALL BE REMOVED TO CLEAN STRAIGHT LINES BY SAW CUTTING. SEE THE STANDARD CONSTRUCTION DETAILS FOR ADDITIONAL INFORMATION.
- THE CONTRACTOR SHALL BE RESPONSIBLE FOR ALL CONSTRUCTION LAYOUT AND STAKING INCLUDING SETTING OF GRADES, LINES AND LEVELS; AND THE LOCATION OF EXISTING AND PROPOSED EASEMENTS AND/OR RIGHTS-OF-WAY. THE CONTRACTOR'S SURVEYOR SHALL PROVIDE CENTERLINE ALIGNMENT FOR CONSTRUCTION PURPOSES AND ESTABLISH AND MAINTAIN BENCHMARKS AND HORIZONTAL CONTROL POINTS. THE CONTRACTOR SHALL ASSUME ALL RESPONSIBILITY FOR THE CORRECTNESS OF THE GRADE AND ALIGNMENT STAKES.
- THE CONTRACTOR SHALL MAINTAIN ACCESS TO PRIVATE AND COMMERCIAL PROPERTIES AT ALL TIMES DURING CONSTRUCTION.
- PIPE SHALL BE LAID WITH A MINIMUM COVER OF 42" IN PAVED AREAS AND 36" IN UNPAVED AREAS WITH AN ALLOWABLE MAXIMUM OF 60". COVER IN ALL AREAS SHALL BE MEASURED FROM CROWN OF PIPE TO FINISH GRADE. REDUCTION IN PIPE COVER REQUIREMENTS REQUIRE APPROVAL OF THE JWSC.
- ALL NON-FLANGED FITTINGS AND VALVES SHALL BE RESTRAINED. THIS SHALL BE ACCOMPLISHED USING MECHANICAL RESTRAINTS AT FITTINGS AND MECHANICAL RESTRAINT ALONG ADJACENT JOINTS OF PIPE IN ACCORDANCE WITH THE JWSC STANDARD DETAILS (SEE SHEETS MD-1 AND MD-2).
- ALL JOINTS WITHIN STEEL CASING PIPE SHALL BE RESTRAINED WITH MECHANICAL RESTRAINING DEVICES. HARNESS RESTRAINTS ON PVC PIPE INSTALLED WITHIN CASINGS MAY REQUIRE LARGER CASING PIPES. CONTRACTOR SHALL VERIFY CASING PIPE SIZE REQUIREMENTS AND ADJUST CASING PIPE SIZES AS NECESSARY WITHOUT ADDITIONAL COMPENSATION.
- THE CONTRACTOR SHALL ENGAGE THE SERVICES OF A REGISTERED LAND SURVEYOR TO PREPARE AND SUBMIT RECORD DRAWINGS OF THE COMPLETED WATER INFRASTRUCTURE IN ACCORDANCE WITH THE JWSC RECORD DRAWING STANDARDS.

MATERIAL SPECIFICATIONS

- THE CONTRACTOR SHALL FURNISH POTABLE WATER PIPING SYSTEMS IN ACCORDANCE WITH THE MATERIAL SPECIFICATIONS OUTLINED IN THE JWSC'S STANDARDS FOR WATER AND SEWER DESIGN AND CONSTRUCTION. ALL REFERENCES TO INDUSTRY STANDARDS (ASTM, ANSI, AWWA, ETC.) SHALL BE TO THE LATEST REVISION UNLESS STATED OTHERWISE.
- ALL MATERIALS SHALL BE NEW.
- THE REFERENCED MATERIAL STANDARDS INCLUDE A LIST OF ACCEPTABLE MANUFACTURERS FOR THE VARIOUS WATER SYSTEM COMPONENTS (SEE APPENDIX 2A THIS SHEET). THE CONTRACTOR MAY CHOOSE FREELY FROM THE MANUFACTURERS LIST AND MATERIAL SUBMITTALS FOR SUCH ITEMS ARE NOT REQUIRED.
- ONLY PRODUCTS FROM FROM THE ACCEPTABLE MANUFACTURER'S LISTS MAY BE USED IN THE WORK. ANY ITEM REQUIRED BUT NOT SPECIFIED IN THE REFERENCED STANDARDS, OR ANY PRODUCT OR MANUFACTURER OTHER THAN THOSE LISTED WILL BE CONSIDERED A SUBSTITUTION. MATERIAL SUBMITTALS ARE REQUIRED FOR SUCH ITEMS. SUBSTITUTIONS WILL NOT BE ALLOWED WITHOUT THE PRIOR WRITTEN APPROVAL OF THE JWSC. SUBSTITUTIONS, IF ALLOWED, SHALL MEET ALL CRITERIA OF THE DETAILED SPECIFICATIONS. THE BURDEN OF PROOF FOR COMPLIANCE OF ANY PROPOSED SUBSTITUTION RESTS WITH THE CONTRACTOR. THE JWSC WILL BE THE SOLE JUDGE AS TO THE ACCEPTANCE OF A PROPOSED SUBSTITUTION AND SUCH DECISIONS WILL BE FINAL.

STANDARDS FOR WATER AND SEWER DESIGN AND CONSTRUCTION APPENDIX 2A		
WATER DISTRIBUTION SYSTEM – ACCEPTABLE MANUFACTURERS		
PARAGRAPH	PRODUCT	MANUFACTURER
2.4.1	POTABLE WATER PIPE	
2.4.1.1	DUCTILE IRON PIPE	AMERICAN CAST IRON PIPE COMPANY U. S. PIPE AND FOUNDRY CLOW McWANE
2.4.1.2	POLYVINYL CHLORIDE (PVC) PIPE	J. M. EAGLE BLUE BRUTE DIAMOND PLASTICS CORPORATION NORTH AMERICAN PIPE CORPORATION NATIONAL PIPE AND PLASTICS VULCAN
2.4.1.3	POLYETHYLENE TUBING	CHARTER, ADS
2.4.1.4	HIGH DENSITY POLYETHYLENE (HDPE) PIPE	PERFORMANCE, JM, LAMSON
2.4.1.5	STEEL CASING PIPE	SEE NOTE 1 AT BOTTOM OF TABLE
2.4.2	FITTINGS	
2.4.2.1	DUCTILE IRON	AMERICAN CAST IRON PIPE COMPANY U. S. PIPE AND FOUNDRY CLOW McWANE
2.4.2.2	PVC	J. M. EAGLE BLUE BRUTE DIAMOND PLASTICS CORPORATION NORTH AMERICAN PIPE CORPORATION NATIONAL PIPE AND PLASTICS VULCAN
2.4.2.3	NON-STANDARD FITTINGS AND WALL CASTINGS	SEE NOTE 1 AT BOTTOM OF TABLE
2.4.3	JOINTS (RESTRAINED)	
2.4.3.3	MECHANICAL JOINT RESTRAINTS	EBAA IRON SALES
2.4.3.3	HARNESS (BELL) RESTRAINTS	EBAA IRON SALES
2.4.4	VALVES AND APPURTENANCES	
2.4.4.1	GATE VALVES (4" AND LARGER)	CLOW, MUELLER
2.4.4.1	GATE VALVES (2")	MATCO
2.4.4.2	FIRE HYDRANTS	CLOW MEDALLION, MUELLER SUPERCENTURIAN
2.4.4.3	VALVE BOXES	STAR, SEGMA
2.4.4.4	TAPPING SLEEVES	JCM, SMITH BLAIR
2.4.5	WATER SERVICES AND APPURTENANCES	
2.4.5.1	CORPORATION STOPS	MUELLER, FORD
2.4.5.2	CURB STOPS	MUELLER, FORD
2.4.5.3	DOUBLE STRAPPED TAPPING SADDLES	JCM
2.4.5.4	METER BOXES (RESIDENTIAL)	PENTAIR
2.4.5.5	METER BOXES (1-1/2" AND 2" METERS)	PENTAIR
2.4.6	BACKFLOW PREVENTION DEVICES	
2.4.6.1	DOUBLE CHECK VALVE (DCV) ASSEMBLIES	WATTS, HERSEY, FEBCO
2.4.6.2	REDUCED PRESSURE ZONE (RPZ) ASSEMBLIES	WATTS, HERSEY, FEBCO
2.4.7	MISCELLANEOUS ITEMS	
2.4.7.1	DETECTION TAPE	OMEGA, PROLINE
2.4.7.2	TRACER WIRE	COPPERHEAD, APEX
2.4.7.3	POLYETHYLENE WRAP	TRUMBULL
2.4.7.4	CASING SPACERS	BWM, CASCADE
2.4.7.5	END SEALS	PENTAIR
NOTE 1	WHERE NO MANUFACTURER IS LISTED FOR A PARTICULAR ITEM OF MATERIAL OR EQUIPMENT, THE CONTRACTOR MAY SELECT THE MANUFACTURER PROVIDED THAT ALL REQUIREMENTS OF THESE STANDARDS FOR THAT PARTICULAR ITEM OF MATERIAL OR EQUIPMENT ARE MET. SUBMITTALS FOR SUCH ITEMS ARE REQUIRED.	
NOTE 2	STANDARD CONSTRUCTION DETAILS MAY BE FOUND ON PLAN SHEETS 11 OF THESE CONSTRUCTION PLANS.	



BRUNSWICK-GLYNN COUNTY
JOINT WATER & SEWER COMMISSION

700 Gloucester Street, Suite 300
Brunswick, Georgia 31520
(912) 261-7110 Phone
(912) 261-7178 Fax
www.bgjwsc.org

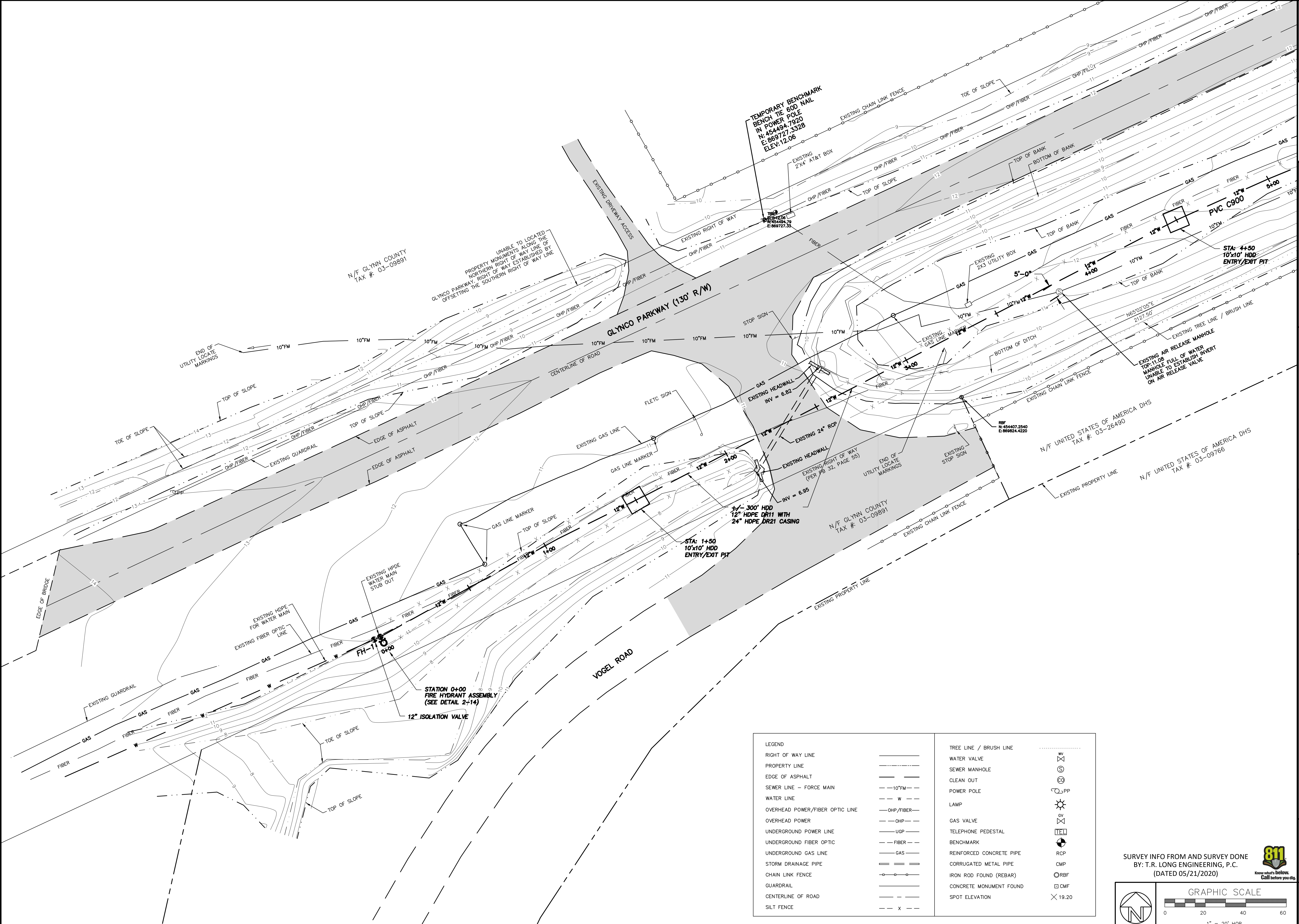
NO.	DATE	COMMENTS
1	02/17/2021	PLAN REVISIONS PER EPD

CANAL ROAD TO GLYNCO PARKWAY
WATER MAIN EXTENSIONS

BRUNSWICK-GLYNN COUNTY JOINT WATER & SEWER COMMISSION

GENERAL CONSTRUCTION NOTES

FILE NO.: NM-PROJ 704
DATE: DEC 10, 2020
SCALE: NONE
DRAWN BY: HP

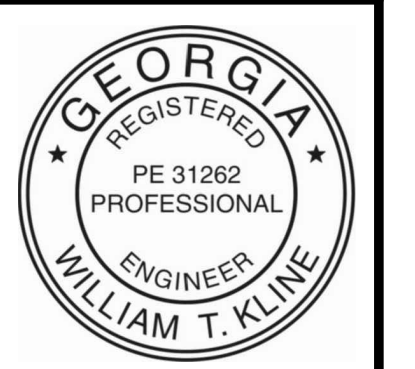


LEGEND		TREE LINE / BRUSH LINE	
RIGHT OF WAY LINE	---	WATER VALVE	⊗
PROPERTY LINE	- - - - -	SEWER MANHOLE	⊙
EDGE OF ASPHALT	---	CLEAN OUT	⊕
SEWER LINE - FORCE MAIN	---10"FM---	POWER POLE	⊙ PP
WATER LINE	---W---	LAMP	⊙
OVERHEAD POWER/FIBER OPTIC LINE	---OHP/FIBER---	GAS VALVE	⊗
OVERHEAD POWER	---OHP---	TELEPHONE PEDESTAL	⊕
UNDERGROUND POWER LINE	---UGP---	BENCHMARK	⊕
UNDERGROUND FIBER OPTIC	---FIBER---	REINFORCED CONCRETE PIPE	RCP
UNDERGROUND GAS LINE	---GAS---	CORRUGATED METAL PIPE	CMP
STORM DRAINAGE PIPE	---	IRON ROD FOUND (REBAR)	⊙ RBF
CHAIN LINK FENCE	⊙-⊙-⊙-⊙	CONCRETE MONUMENT FOUND	⊕ CMF
GUARDRAIL	⊕-⊕-⊕-⊕	SPOT ELEVATION	× 19.20
CENTERLINE OF ROAD	---		
SILT FENCE	---X---		

SURVEY INFO FROM AND SURVEY DONE
 BY: T.R. LONG ENGINEERING, P.C.
 (DATED 05/21/2020)

811
 Know what's below. Call before you dig.

GRAPHIC SCALE
 0 20 40 60
 1" = 20' HOR



BRUNSWICK-GLYNN COUNTY
 JOINT WATER & SEWER COMMISSION
 1705 Gloucester Street,
 Brunswick, Georgia 31520
 (912) 261-7110 Phone
 (912) 261-7178 Fax
 www.bgljwsc.org

NO.	DATE	COMMENTS
1	02/17/2021	PLAN REVISIONS PER EPD

CANAL ROAD TO GLYNCO PARKWAY
 WATER MAIN EXTENSIONS
 GLYNN COUNTY, GEORGIA
 BRUNSWICK-GLYNN JOINT WATER & SEWER COMMISSION
 PROPOSED PLAN

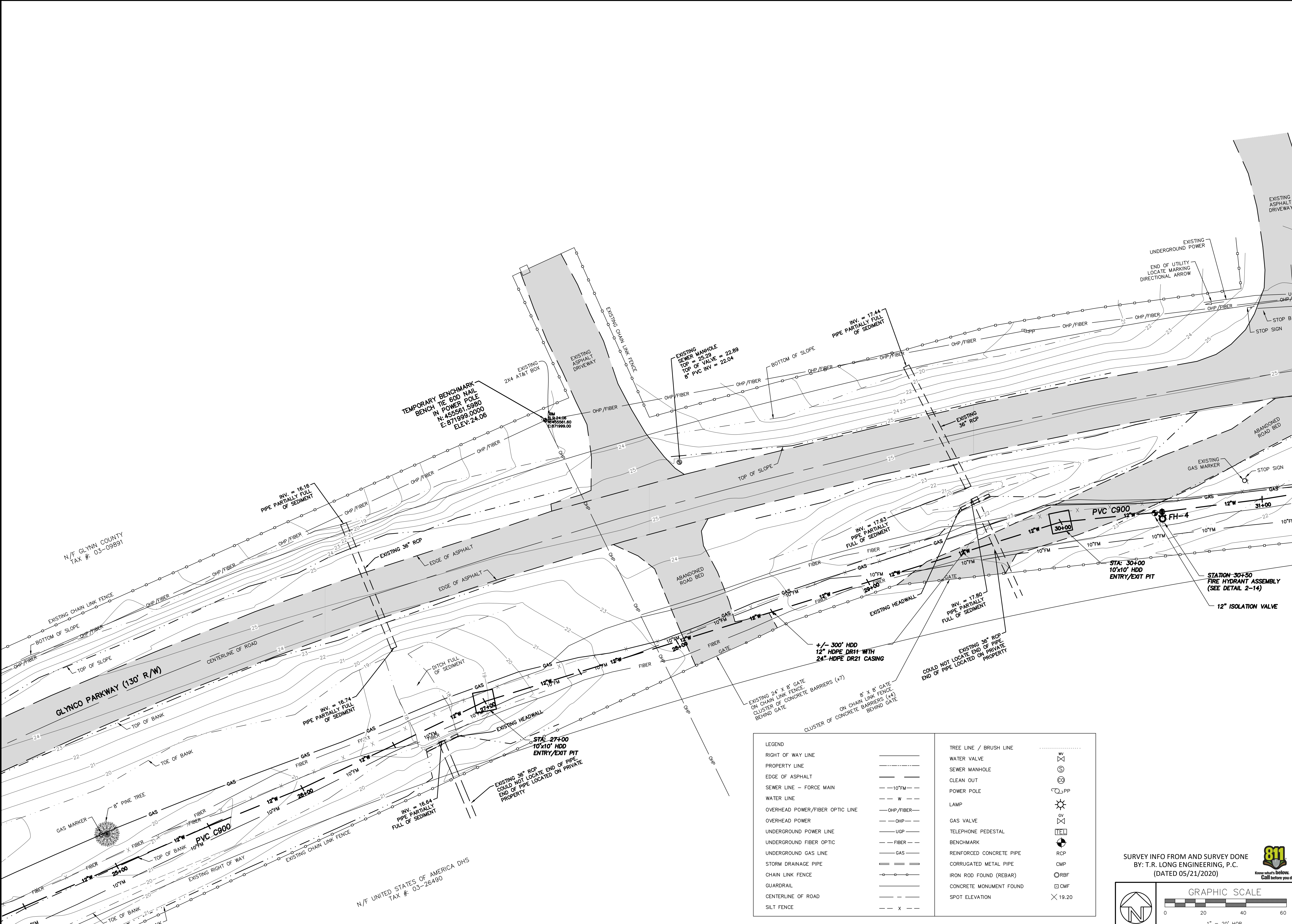
FILE NO.: NM-PROJ 704
 DATE: MAY 26, 2021
 SCALE: AS SHOWN
 DRAWN BY:

SHEET NO.:
P-1
 OF 3



BRUNSWICK-GLYNN COUNTY
JOINT WATER & SEWER COMMISSION

1705 Gloucester Street,
Brunswick, Georgia 31520
(912) 261-7110 Phone
(912) 261-7178 Fax
www.bjwscc.org



NO.	DATE	COMMENTS
1	02/18/2021	PLAN REVISIONS PER EFD

CANAL ROAD TO GLYNCO PARKWAY
WATER MAIN EXTENSIONS
GLYNN COUNTY, GEORGIA
BRUNSWICK-GLYNN JOINT WATER & SEWER COMMISSION

PROPOSED PLAN

LEGEND		TREE LINE / BRUSH LINE	
RIGHT OF WAY LINE	---	WATER VALVE	⊗
PROPERTY LINE	---	SEWER MANHOLE	⊙
EDGE OF ASPHALT	---	CLEAN OUT	⊕
SEWER LINE - FORCE MAIN	---10"FM---	POWER POLE	⊙ PP
WATER LINE	--- W ---	LAMP	⊙
OVERHEAD POWER/FIBER OPTIC LINE	--- OHP/FIBER ---	GAS VALVE	⊗
UNDERGROUND POWER LINE	--- UGP ---	TELEPHONE PEDESTAL	⊕
UNDERGROUND FIBER OPTIC	--- FIBER ---	BENCHMARK	⊕
UNDERGROUND GAS LINE	--- GAS ---	REINFORCED CONCRETE PIPE	RCP
STORM DRAINAGE PIPE	---	CORRUGATED METAL PIPE	CMP
CHAIN LINK FENCE	---	IRON ROD FOUND (REBAR)	⊙ RBF
GUARDRAIL	---	CONCRETE MONUMENT FOUND	⊕ CMF
CENTERLINE OF ROAD	---	SPOT ELEVATION	× 19.20
SILT FENCE	---		

811
Know what's below. Call before you dig.

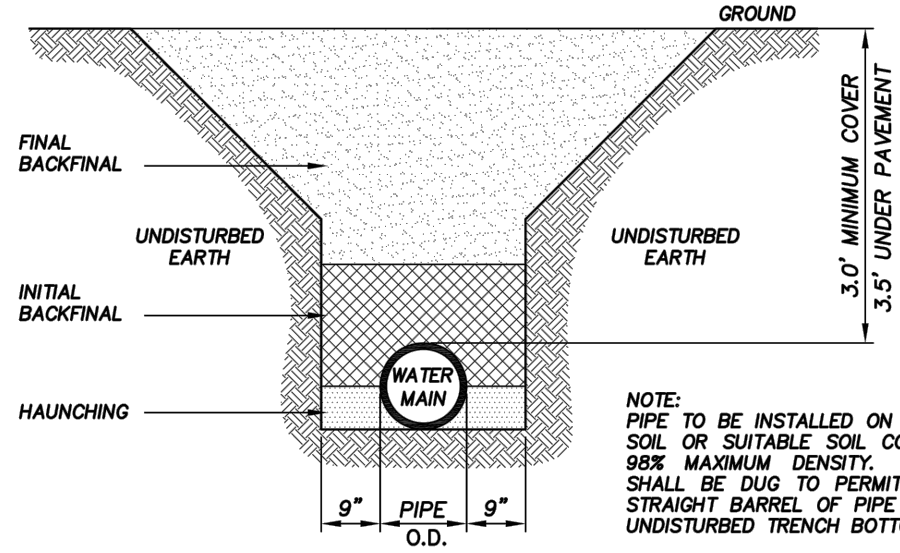
SURVEY INFO FROM AND SURVEY DONE
BY: T.R. LONG ENGINEERING, P.C.
(DATED 05/21/2020)

GRAPHIC SCALE
0 20 40 60
1" = 20' HOR

N/F GLYNN COUNTY
TAX #: 03-09891

N/F UNITED STATES OF AMERICA DHS
TAX #: 03-26490

FILE NO.: NM-PROJ 704
DATE: MAY 26, 2021
SCALE: AS SHOWN
DRAWN BY: SHEET NO.: P-2

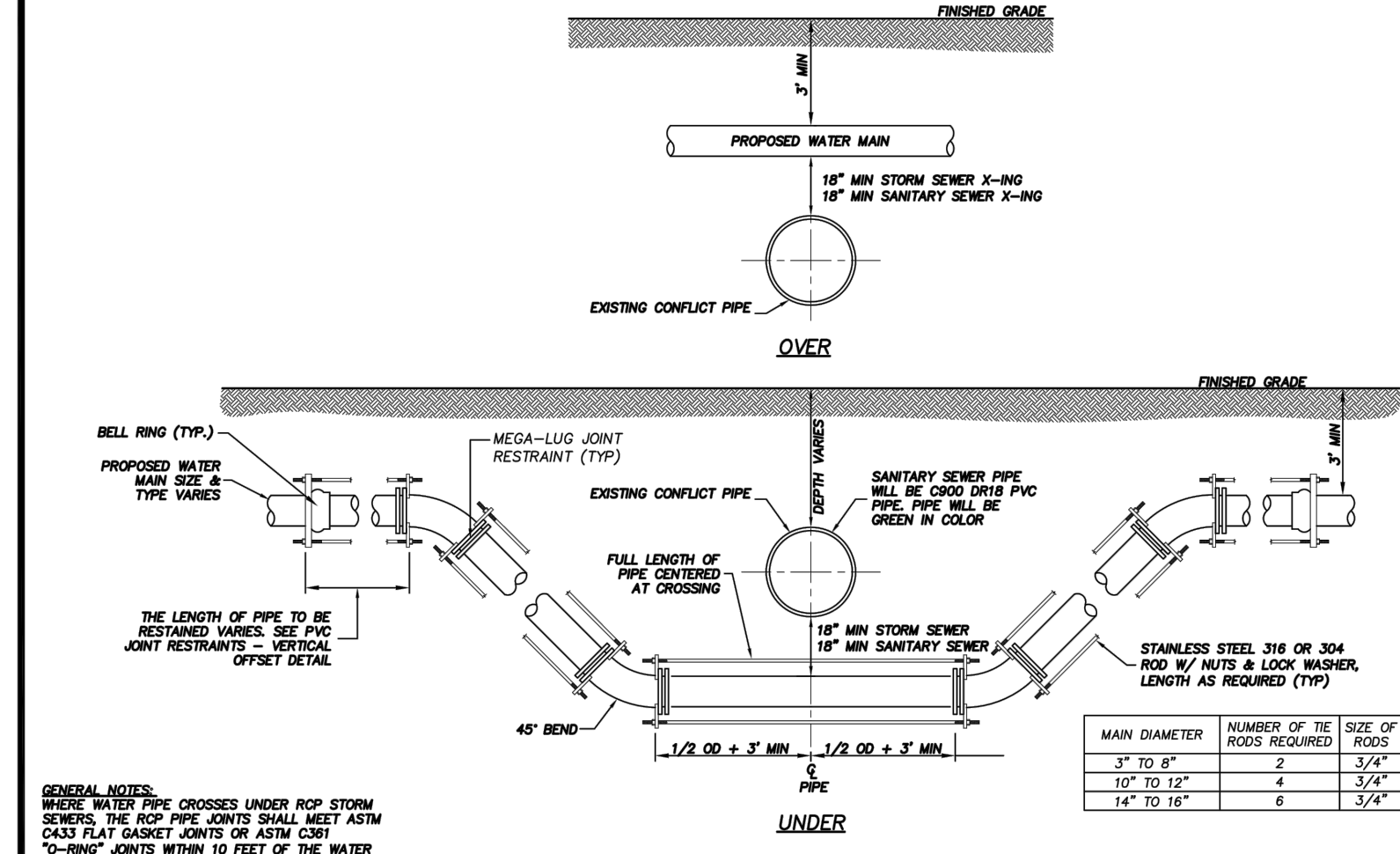


NOTE:
PIPE TO BE INSTALLED ON UNDISTURBED SOIL OR SUITABLE SOIL COMPACTED TO 95% MAXIMUM DENSITY. BELL HOLE SHALL BE DUG TO PERMIT THE ENTIRE STRAIGHT BARREL OF PIPE TO REST ON UNDISTURBED TRENCH BOTTOM.
STONES FOUND IN THE TRENCH SHALL BE REMOVED FOR A DEPTH OF AT LEAST SIX(6) INCHES BELOW THE BOTTOM OF THE PIPE.

NOT TO SCALE

**BRUNSWICK-GLYNN COUNTY
JOINT WATER & SEWER
COMMISSION**
1703 Gloucester Street
Brunswick, Georgia 31520
Phone: (912) 261-7110
Fax: (912) 261-7178
Website: www.hgjwsc.org

PRESSURE PIPE TRENCH DETAIL
JWSC STANDARD DETAIL 2-1
Date: JUNE 2017

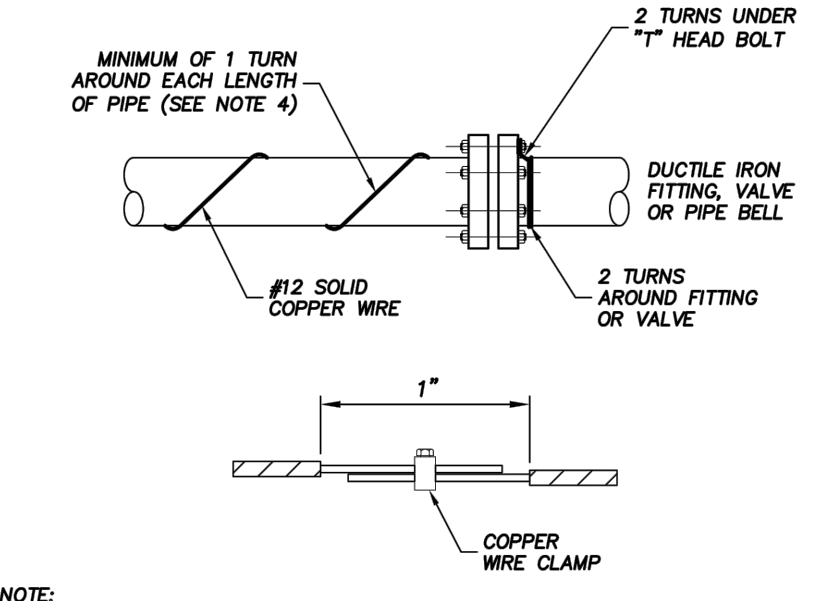


MAIN DIAMETER	NUMBER OF THE SIZE OF RODS REQUIRED	SIZE OF RODS
3" TO 6"	2	3/4"
10" TO 12"	4	3/4"
14" TO 16"	6	3/4"

NOT TO SCALE

**BRUNSWICK-GLYNN COUNTY
JOINT WATER & SEWER
COMMISSION**
1703 Gloucester Street
Brunswick, Georgia 31520
Phone: (912) 261-7110
Fax: (912) 261-7178
Website: www.hgjwsc.org

UTILITY CONFLICT DETAIL
JWSC STANDARD DETAIL 2-2
Date: JULY 2020

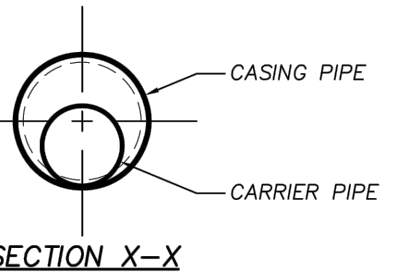


- NOTE:
1. USE #12 AWG SOLID PLASTIC COATED COPPER WIRE.
2. STRIP 2" OF COATING & WRAP WIRE 2 TURNS UNDER 1" HEAD BOLT ON TOP OF DUCTILE IRON FITTING (VALVE). NEXT WRAP WIRE 2 TURNS AROUND BELL OF FITTING (VALVE) AND WRAP WITH A CONTINUOUS LENGTH OF AT LEAST 4 WRAPS PER LENGTH OF PVC PIPE TO THE NEXT DUCTILE IRON FITTING. TERMINATE AT FITTING IN A SIMILAR MANNER AS NOTED ABOVE.
3. ALL SPLICES MUST BE MADE BY USING COPPER WIRE SPLICE, "U" BOLT ASSEMBLIES AND THEN WRAPPING WITH ELECTRICAL TAPE.
4. IN LIEU OF "WRAPPING" TRACER WIRE AROUND PVC PIPE, WIRE MAY BE STRUNG ALONG THE TOP OF PIPE, PROVIDED IT IS TIED TO THE PIPE EVERY 5'-0" TO INSURE ACCURATE POSITION MAINTAINED DURING BACKFILL.

NOT TO SCALE

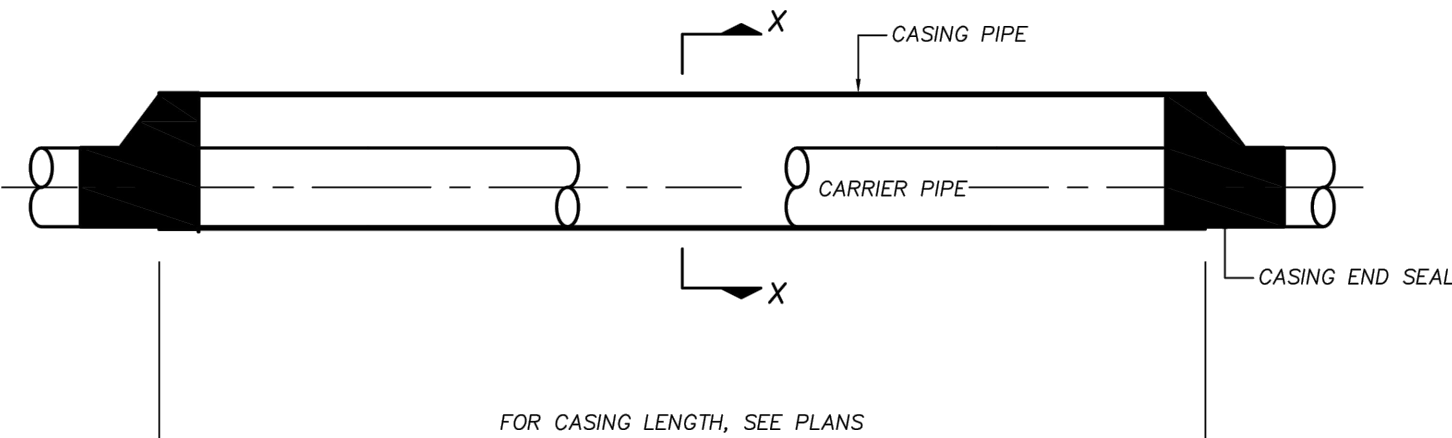
**BRUNSWICK-GLYNN COUNTY
JOINT WATER & SEWER
COMMISSION**
1703 Gloucester Street, Suite 300
Brunswick, Georgia 31520
Phone: (912) 261-7110
Fax: (912) 261-7178
Website: www.hgjwsc.org

TRACER WIRE INSTALLATION
JWSC STANDARD DETAIL 2-9
Date: AUGUST 2011



CARRIER PIPE DIAMETER (INCHES)	CARRIER PIPE O.D. DIAMETER (INCHES)	CASING PIPE ID DIAMETER (INCHES)	CASING PIPE O.D. DIAMETER (INCHES)	WALL THICKNESS* (INCHES)
6	6.80	10	9.75	0.450
8	8.00	12	11.00	0.500
10	11.10	14	13.50	0.850
12	13.80	16	15.50	0.950
14	15.30	18	17.50	0.980
16	17.40	20	19.50	1.450
18	19.80	24	22.75	1.450
20	21.80	28	26.75	1.550
24	25.80	36	32.75	1.600

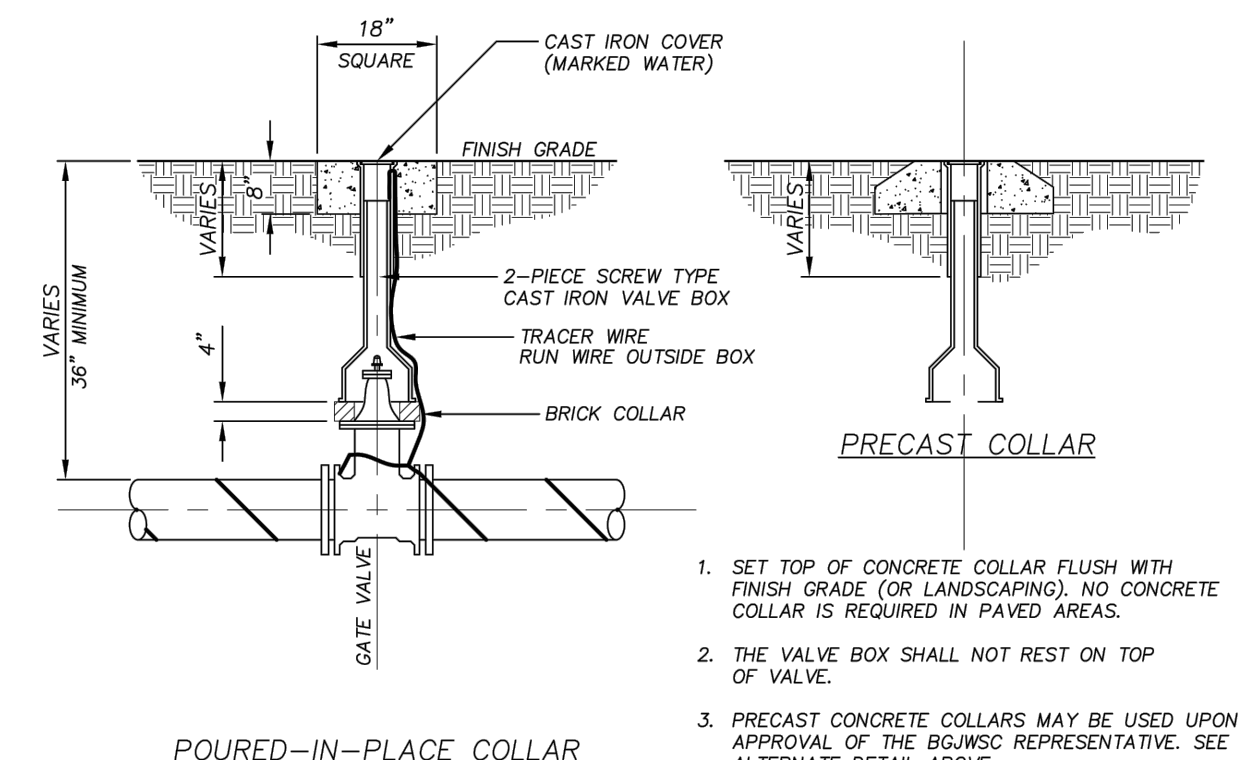
- GENERAL NOTES:
1. DETAIL SHOWN IS FOR STATE ROADWAY CROSSINGS.
2. INSTALLATIONS UNDER CITY OF BRUNSWICK AND GLYNN COUNTY ROADS MAY HAVE REQUIREMENTS DIFFERENT FROM THOSE SHOWN. INSTALLATIONS SHALL MEET ALL APPLICABLE REQUIREMENTS OF THE GEORGIA DEPARTMENT OF TRANSPORTATION.
3. SEE BJWSC STANDARD CONSTRUCTION SPECIFICATIONS FOR ADDITIONAL INFORMATION.
4. CASING SIZES SHOWN ARE FOR C-905 FPVC. CARRIER PIPE SIZES ARE FOR C-905 FPVC DR18 UNLESS OTHERWISE NOTED. CASINGS AND CARRIER PIPE SHALL BE BLUE OR GREEN IN COLOR.



NOT TO SCALE

**BRUNSWICK-GLYNN COUNTY
JOINT WATER & SEWER
COMMISSION**
1703 Gloucester Street
Brunswick, Georgia 31520
Phone: (912) 261-7110
Fax: (912) 261-7178
Website: www.hgjwsc.org

**FPVC CASING AND C905 CARRIER PIPE
INSTALLATION**
JWSC STANDARD DETAIL 2-10A
Date: JANUARY 2017

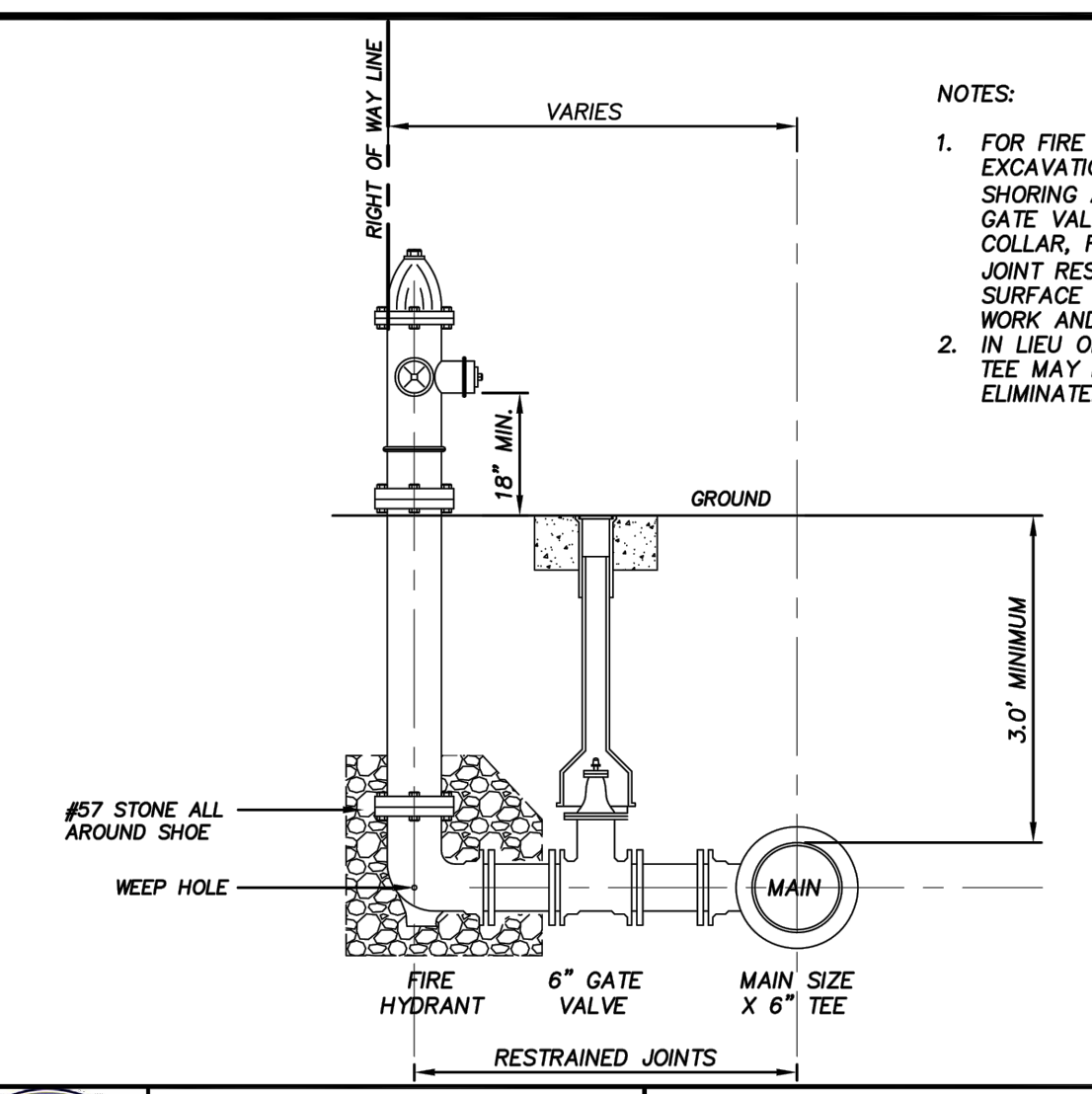


1. SET TOP OF CONCRETE COLLAR FLUSH WITH FINISH GRADE (OR LANDSCAPING). NO CONCRETE COLLAR IS REQUIRED IN PAVED AREAS.
2. THE VALVE BOX SHALL NOT REST ON TOP OF VALVE.
3. PRECAST CONCRETE COLLARS MAY BE USED UPON APPROVAL OF THE BJWSC REPRESENTATIVE. SEE ALTERNATE DETAIL ABOVE.

NOT TO SCALE

**BRUNSWICK-GLYNN COUNTY
JOINT WATER & SEWER
COMMISSION**
1703 Gloucester Street, Suite 300
Brunswick, Georgia 31520
Phone: (912) 261-7110
Fax: (912) 261-7178
Website: www.hgjwsc.org

WATER VALVE DETAIL
JWSC STANDARD DETAIL 2-13
Date: AUGUST 2011

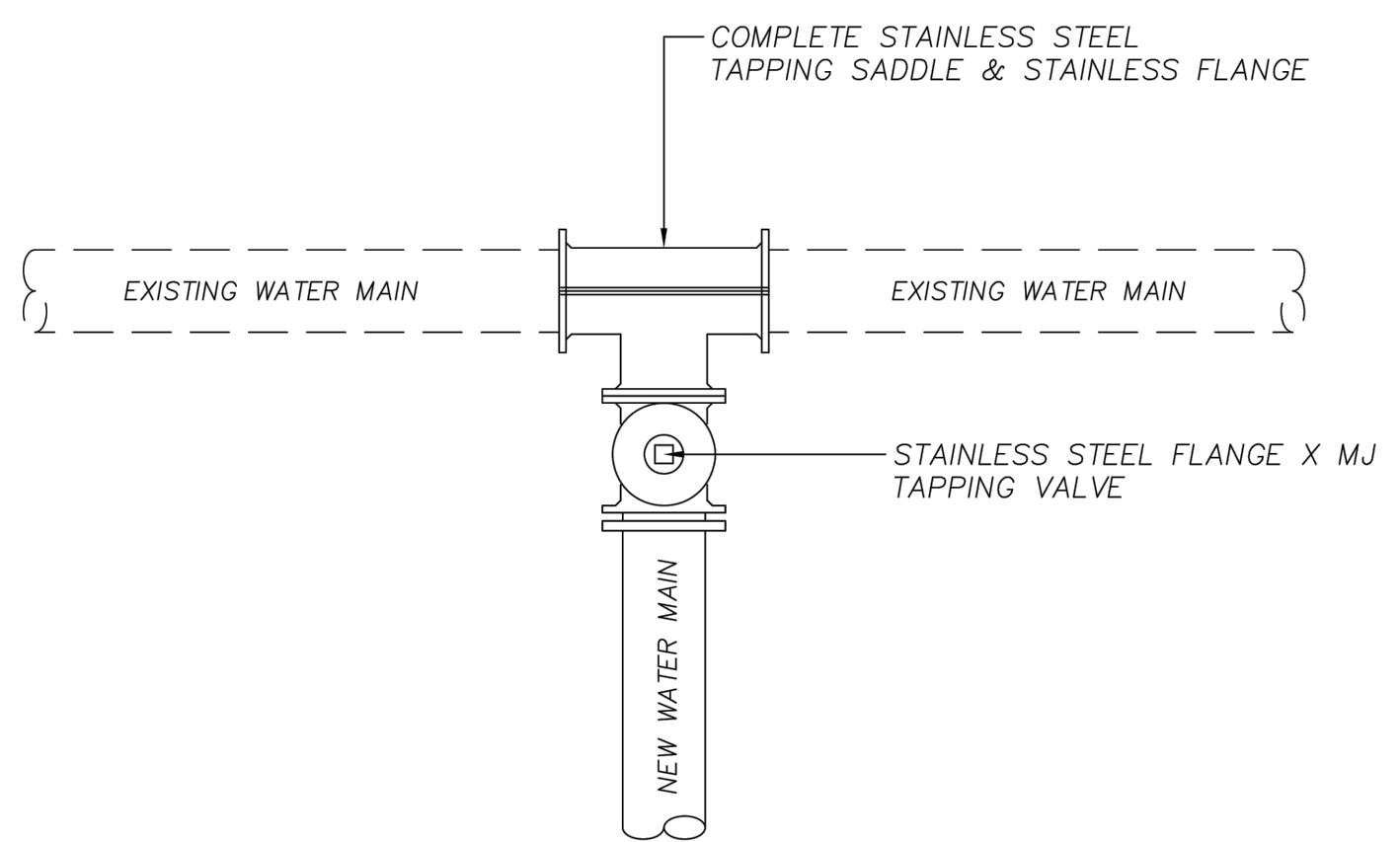


- NOTES:
1. FOR FIRE HYDRANT ASSEMBLIES INCLUDE EXCAVATION, BACKFILL, NECESSARY SHORING AND SHEETING, 6" LEAD PIPE, 6" GATE VALVE AND VALVE BOX, VALVE BOX COLLAR, FIRE HYDRANT, GRAVEL, THE ROD JOINT RESTRAINTS (NOT SHOWN), COMPLETE SURFACE RESTORATION AND ALL OTHER WORK AND APPURTENANCES REQUIRED.
2. IN LIEU OF AN ALL MJ TEE, A HYDRANT TEE MAY BE USED AND SPOOL PIECE ELIMINATED.

NOT TO SCALE

**BRUNSWICK-GLYNN COUNTY
JOINT WATER & SEWER
COMMISSION**
1703 Gloucester Street, Suite 300
Brunswick, Georgia 31520
Phone: (912) 261-7110
Fax: (912) 261-7178
Website: www.hgjwsc.org

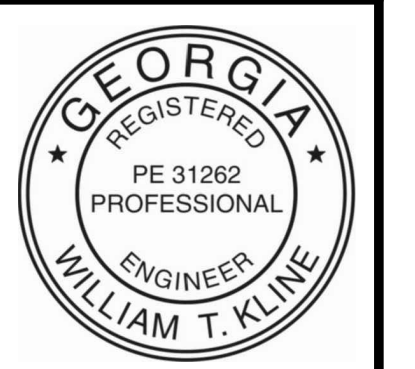
FIRE HYDRANT DETAIL
JWSC STANDARD DETAIL 2-14
Date: AUGUST 2011



NOT TO SCALE

**BRUNSWICK-GLYNN COUNTY
JOINT WATER & SEWER
COMMISSION**
1703 Gloucester Street
Brunswick, Georgia 31520
Phone: (912) 261-7110
Fax: (912) 261-7178
Website: www.hgjwsc.org

CONNECTION TO EXISTING WATER MAIN
JWSC STANDARD DETAIL 2-15
Date: DECEMBER 2017

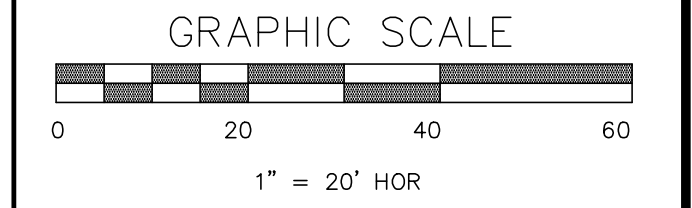
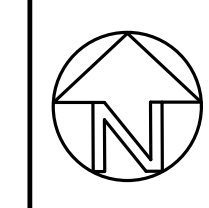


BRUNSWICK-GLYNN COUNTY
JOINT WATER & SEWER COMMISSION
1703 Gloucester Street,
Brunswick, Georgia 31520
(912) 261-7110 Phone
(912) 261-7178 Fax
www.hgjwsc.org

NO.	DATE	COMMENTS
1	02/17/2021	PLAN REVISIONS PER EPD

CANAL ROAD TO GLYNCO PARKWAY
WATER MAIN EXTENSIONS
GLYNN COUNTY, GEORGIA
BRUNSWICK-GLYNN JOINT WATER & SEWER COMMISSION
JWSC DETAILS

FILE NO.: NM-PROJ 704
DATE: MAY 20, 2021
SCALE: AS SHOWN
DRAWN BY:



SHEET NO.:
P-3
OF 3