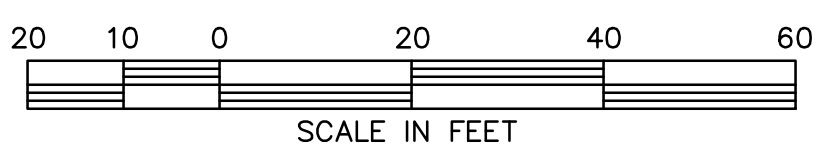


**LEGEND:**

|      |  |            |                                |
|------|--|------------|--------------------------------|
| CIPS | CAPPED IRON PIPE SET (SSC PC, LSF 317) | ☆          | LIGHT POLE                     |
| IRF  | IRON ROD FOUND                         | ●          | GEORGIA POWER POLE             |
| CMF  | CONCRETE MONUMENT FOUND                | ◆          | TRAFFIC SIGNAL BOX             |
| SDMH | STORM DRAIN MANHOLE                    | ⊙          | UTILITY POLE                   |
| SSMH | SANITARY SEWER MANHOLE                 | ⊞          | TRANSFORMER                    |
| CMH  | CURB INLET MANHOLE                     | ⊞          | PHONE BOX                      |
| RCP  | REINFORCED CONCRETE PIPE               | ⊞          | SIGN                           |
| ●    | FIRE HYDRANT                           | ⊞          | CONCRETE                       |
| ⊙    | WATER METER                            | ⊞          | BUILDING                       |
| ⊙    | WATER VALVE                            | ⊞          | ASPHALT                        |
| ⊙    | IRRIGATION CONTROL VALVE               | (01-00175) | TAX PARCEL I.D.                |
| ⊙    | GAS VALVE                              | —          | OVERHEAD UTILITIES             |
| ■    | CATCH BASIN                            | ---        | BOTTOM OF DITCH                |
| ⊙    | STORM DRAIN MANHOLE                    | ---        | TOP OF DITCH                   |
| ⊙    | SEWER CLEAN-OUT                        | ---        | UGG UNDERGROUND GAS LINE       |
| ⊙    | SANITARY SEWER MANHOLE                 | ---        | UGW UNDERGROUND WATER LINE     |
| ⊞    | SANITARY SEWER VAULT                   | ---        | UGT UNDERGROUND TELEPHONE LINE |
| ⊞    | TELEPHONE MANHOLE                      | ---        | UGP UNDERGROUND POWER LINE     |

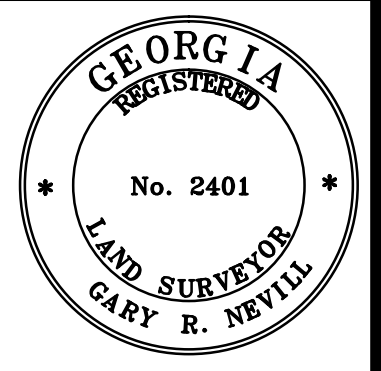


SHEET 10 OF 10

SURVEY FOR:  
**BRUNSWICK - GLYNN COUNTY JOINT WATER & SEWER COMMISSION**  
 ROUTE SURVEY FOR: ALTAMA AVENUE - CYPRESS MILL ROAD WATER MAIN REPLACEMENT

DATE: 8/31/11    SCALE: 1" = 20'    DWG # 11120-2.DWG

**SHUPE SURVEYING COMPANY, P.C.**  
 3837 DARIEN HIGHWAY  
 BRUNSWICK, GEORGIA 31525  
 912-265-0562



N O R T H P A R K    C E N T R E

**COLLEGE PARK DRIVE (80' R/W)**

**ALTAMA AVENUE (108' R/W)**

C O L L E G E    P A R K

**NORTHPARK DRIVE (60' R/W)**

SEE SHEET 9

LOT 249  
 NOW OR FORMERLY  
 NEIL SCHIRRA DAWSON  
 (01-00062)  
 (D.B. 11-T, PG. 168)

LOT 250  
 NOW OR FORMERLY  
 ANNETTE D. TYSONI  
 (01-00061)  
 (D.B. 298, PG. 163)

LOT 2  
 NOW OR FORMERLY  
 SONIC HOLDING COMPANY  
 OF GEORGIA, INC.  
 (01-07178)  
 (D.B. 1318, PG. 240)  
 (SONIC RESTAURANT)

NOW OR FORMERLY  
 EVELYN T. THOMPSON &  
 E. LAMAR THOMPSON, JR.  
 (01-06875)  
 (D.B. 24-O, PG. 856)  
 (COASTAL APPLIANCE)

NOW OR FORMERLY  
 ROSS PROPERTIES, LLC  
 (01-07249)  
 (D.B. 2448, PG. 406)  
 (RIMCO)

LOT 3C

SSMH  
 TOP = 16.23  
 INV. = 7.40(W)  
 INV. = 4.51(E)  
 INV. = 2.90(BOX)

SSMH  
 TOP = 14.93  
 INV. = 9.93(N)  
 INV. = 7.43(E/W)

BENCHMARK  
 NAIL IN EAST EDGE OF WET WELL  
 ELEV. = 17.33' (NAVB-88)

PUMP STATION #4021  
 WET WELL  
 TOP = 17.33

SSMH  
 TOP = 16.23  
 INV. = 10.13(BOX)

NORTHPARK DRIVE (60' R/W)

N O R T H P A R K C E N T R E

LOT 1  
NOW OR FORMERLY  
GLASS PROPERTIES, LLC  
(01-07179)  
(D.B. 1031, PG. 469)  
(FARMERS FURNITURE)

NOW OR FORMERLY  
SAVANNAH PRESBYTERY,  
INC.  
(01-00169)  
(CHURCH)

36" GEORGIA POWER EASEMENT

11" CITY OF BRUNSWICK EASEMENT

ALTA MA AVENUE (108' R/W)

C O L L E G E

LOT 249  
NOW OR FORMERLY  
NEIL SCHIRRA DAWSON  
(01-00062)  
(D.B. 11-1, PG. 168)

LOT 248  
NOW OR FORMERLY  
BERYL WILSON, III  
(01-00063)  
(D.B. 1108, PG. 294)

C O L L E G E P A R K

LOT 247  
NOW OR FORMERLY  
ALFREDA GRANT  
(01-00064)

LOT 246  
NOW OR FORMERLY  
JAMES E. GRANT &  
VERDINE FLOWERS GRANT  
(01-00065)

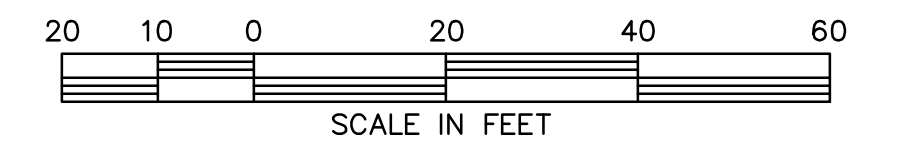
LOT 245  
NOW OR FORMERLY  
SHEILA HOLLOWAY  
(01-00066)

SEE SHEET 10

SEE SHEET 8

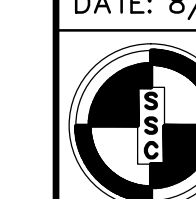
LEGEND:

- |      |  |            |                                |
|------|--|------------|--------------------------------|
| CIPS | CAPPED IRON PIPE SET (SSC PC, LSF 317) | ☆          | LIGHT POLE                     |
| IRF  | IRON ROD FOUND                         | ⊙          | GEORGIA POWER POLE             |
| CMF  | CONCRETE MONUMENT FOUND                | ⊙          | TRAFFIC SIGNAL BOX             |
| SDMH | STORM DRAIN MANHOLE                    | ⊙          | UTILITY POLE                   |
| SSMH | SANITARY SEWER MANHOLE                 | ⊙          | TRANSFORMER                    |
| CIMH | CURB INLET MANHOLE                     | ⊙          | PHONE BOX                      |
| RCP  | REINFORCED CONCRETE PIPE               | ⊙          | SIGN                           |
| ●    | FIRE HYDRANT                           | ⊙          | CONCRETE                       |
| ⊙    | WATER METER                            | ⊙          | BUILDING                       |
| ⊙    | WATER VALVE                            | ⊙          | ASPHALT                        |
| ⊙    | IRRIGATION CONTROL VALVE               | (01-00175) | TAX PARCEL I.D.                |
| ⊙    | GAS VALVE                              | ---        | OVERHEAD UTILITIES             |
| ⊙    | CATCH BASIN                            | ---        | BOTTOM OF DITCH                |
| ⊙    | STORM DRAIN MANHOLE                    | ---        | TOP OF DITCH                   |
| ⊙    | SEWER CLEAN-OUT                        | ---        | UGG UNDERGROUND GAS LINE       |
| ⊙    | SANITARY SEWER MANHOLE                 | ---        | UGW UNDERGROUND WATER LINE     |
| ⊙    | SANITARY SEWER VAULT                   | ---        | UGT UNDERGROUND TELEPHONE LINE |
| ⊙    | TELEPHONE MANHOLE                      | ---        | UGP UNDERGROUND POWER LINE     |



SHEET 9 OF 10

SURVEY FOR:  
BRUNSWICK - GLYNN COUNTY JOINT WATER & SEWER COMMISSION  
ROUTE SURVEY FOR: ALTA MA AVENUE - CYPRESS MILL ROAD WATER MAIN REPLACEMENT  
DATE: 8/31/11 SCALE: 1" = 20' DWG # 11120-2.DWG



SHUPE SURVEYING COMPANY, P.C.  
3837 DARIEN HIGHWAY  
BRUNSWICK, GEORGIA 31525  
912-265-0562

