



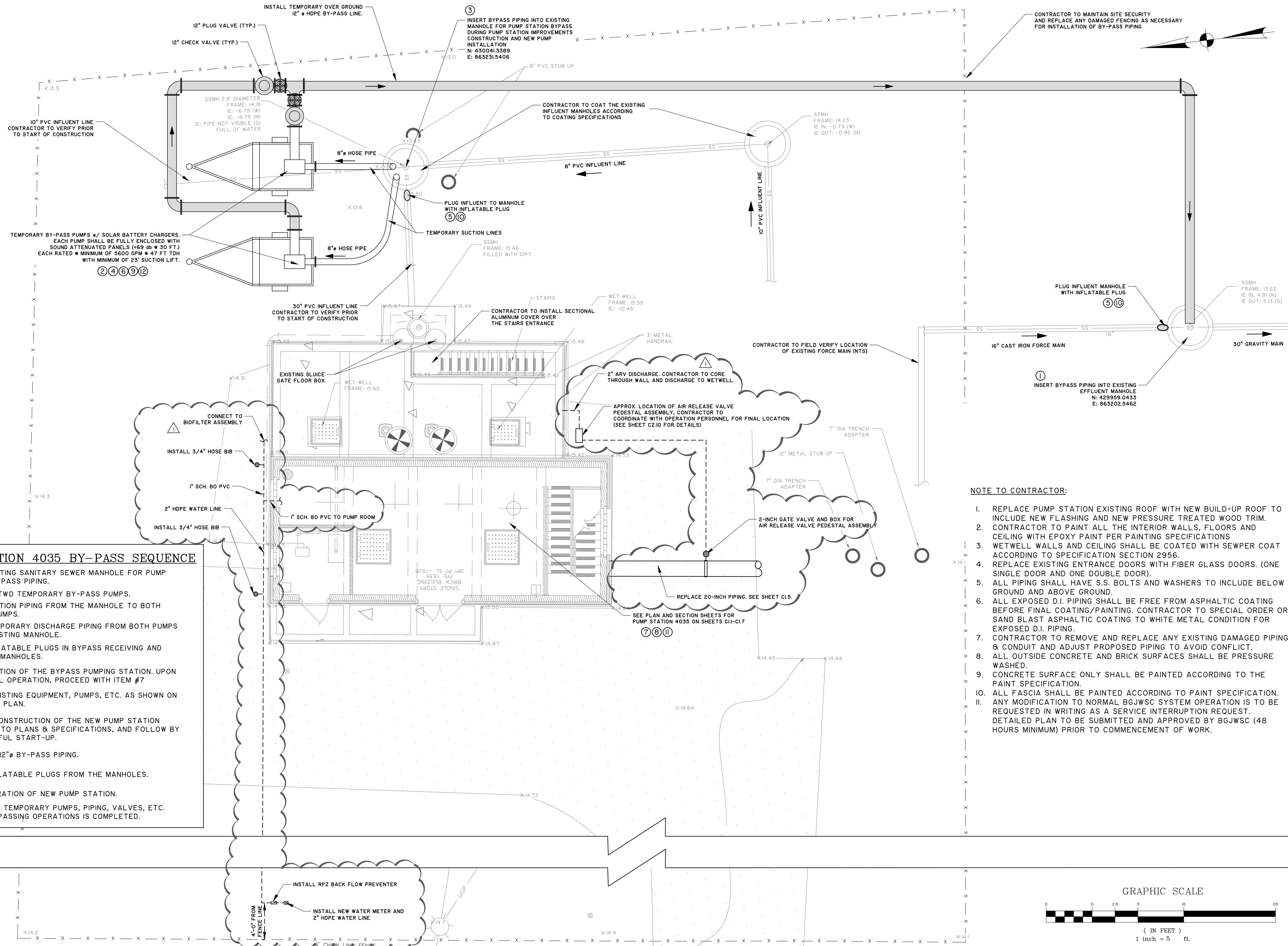
NO.	REVISIONS	BY	DATE
1	REVISED PER ADDENDUM NO. 2		

THOMAS & HUTTON
 50 Park of Commerce Way
 Savannah, GA 31405 • 912.234.5300
 www.thomasandhutton.com

BRUNSWICK-GLYNN JOINT WATER AND SEWER COMMISSION
 BRUNSWICK, GA
 206 SP. LOST NORTH MAINLAND PPH-PUMP STATION IMPROVEMENTS
 SITE PLAN - PS 4035 BYPASS PIPING

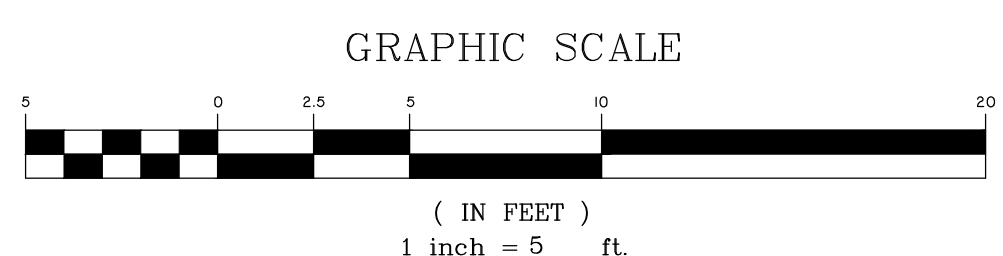
JOB NO:	J-27784.0000
DATE:	8/22/19
DRAWN:	CDR
DESIGNED:	CDR
REVIEWED:	FS
APPROVED:	FS
SCALE:	1" = 5'

C1.1

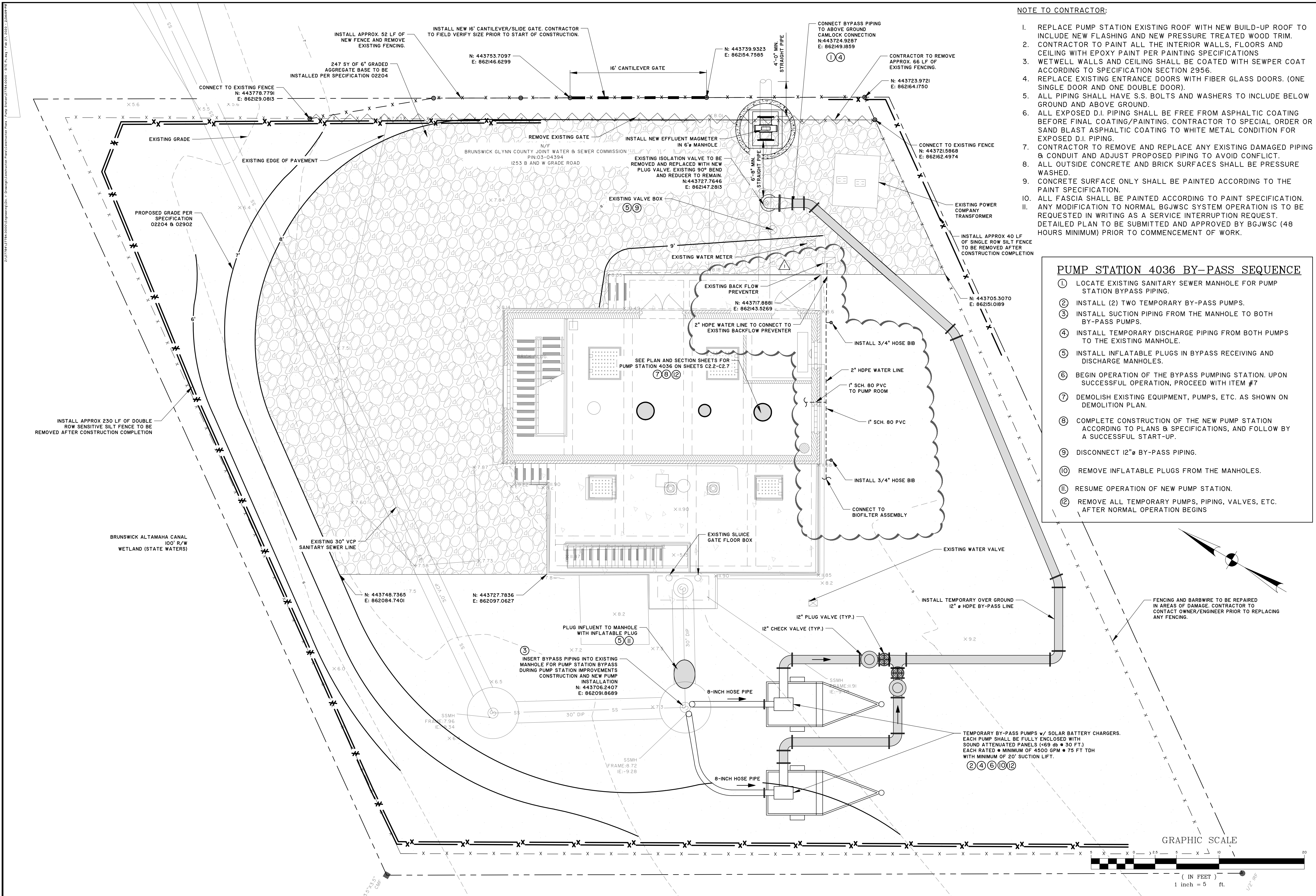


- PUMP STATION 4035 BY-PASS SEQUENCE**
- ① LOCATE EXISTING SANITARY SEWER MANHOLE FOR PUMP STATION BYPASS PIPING.
 - ② INSTALL (2) TWO TEMPORARY BY-PASS PUMPS.
 - ③ INSTALL SUCTION PIPING FROM THE MANHOLE TO BOTH BY-PASS PUMPS.
 - ④ INSTALL TEMPORARY DISCHARGE PIPING FROM BOTH PUMPS TO THE EXISTING MANHOLE.
 - ⑤ INSTALL INFLATABLE PLUGS IN BYPASS RECEIVING AND DISCHARGE MANHOLES.
 - ⑥ BEGIN OPERATION OF THE BYPASS PUMPING STATION. UPON SUCCESSFUL OPERATION, PROCEED WITH ITEM #7
 - ⑦ DEMOLISH EXISTING EQUIPMENT, PUMPS, ETC. AS SHOWN ON DEMOLITION PLAN.
 - ⑧ COMPLETE CONSTRUCTION OF THE NEW PUMP STATION ACCORDING TO PLANS & SPECIFICATIONS, AND FOLLOW BY A SUCCESSFUL START-UP.
 - ⑨ DISCONNECT 12" Ø BY-PASS PIPING.
 - ⑩ REMOVE INFLATABLE PLUGS FROM THE MANHOLES.
 - ⑪ RESUME OPERATION OF NEW PUMP STATION.
 - ⑫ REMOVE ALL TEMPORARY PUMPS, PIPING, VALVES, ETC. AFTER BY-PASSING OPERATIONS IS COMPLETED.

- NOTE TO CONTRACTOR:**
- I. REPLACE PUMP STATION EXISTING ROOF WITH NEW BUILD-UP ROOF TO INCLUDE NEW FLASHING AND NEW PRESSURE TREATED WOOD TRIM.
 - II. CONTRACTOR TO PAINT ALL THE INTERIOR WALLS, FLOORS AND CEILING WITH EPOXY PAINT PER PAINTING SPECIFICATIONS
 - III. WETWELL WALLS AND CEILING SHALL BE COATED WITH SEWPER COAT ACCORDING TO SPECIFICATION SECTION 2956.
 - IV. REPLACE EXISTING ENTRANCE DOORS WITH FIBER GLASS DOORS. (ONE SINGLE DOOR AND ONE DOUBLE DOOR).
 - V. ALL PIPING SHALL HAVE S.S. BOLTS AND WASHERS TO INCLUDE BELOW GROUND AND ABOVE GROUND.
 - VI. ALL EXPOSED D.I. PIPING SHALL BE FREE FROM ASPHALTIC COATING BEFORE FINAL COATING/PAINTING. CONTRACTOR TO SPECIAL ORDER OR SAND BLAST ASPHALTIC COATING TO WHITE METAL CONDITION FOR EXPOSED D.I. PIPING.
 - VII. CONTRACTOR TO REMOVE AND REPLACE ANY EXISTING DAMAGED PIPING & CONDUIT AND ADJUST PROPOSED PIPING TO AVOID CONFLICT.
 - VIII. ALL OUTSIDE CONCRETE AND BRICK SURFACES SHALL BE PRESSURE WASHED.
 - IX. CONCRETE SURFACE ONLY SHALL BE PAINTED ACCORDING TO THE PAINT SPECIFICATION.
 - X. ALL FASCIA SHALL BE PAINTED ACCORDING TO PAINT SPECIFICATION.
 - XI. ANY MODIFICATION TO NORMAL BGJWSC SYSTEM OPERATION IS TO BE REQUESTED IN WRITING AS A SERVICE INTERRUPTION REQUEST. DETAILED PLAN TO BE SUBMITTED AND APPROVED BY BGJWSC (48 HOURS MINIMUM) PRIOR TO COMMENCEMENT OF WORK.



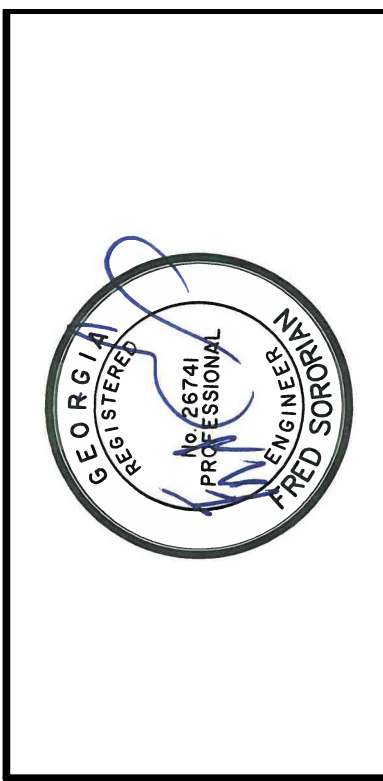
2:1784.0000 (Imp. Units) - Brunswick-Glynn Joint Water and Sewer Commission - Pump Station Improvements - Site Plan - PS 4035 - 08/22/19



- NOTE TO CONTRACTOR:**
- REPLACE PUMP STATION EXISTING ROOF WITH NEW BUILD-UP ROOF TO INCLUDE NEW FLASHING AND NEW PRESSURE TREATED WOOD TRIM.
 - CONTRACTOR TO PAINT ALL THE INTERIOR WALLS, FLOORS AND CEILING WITH EPOXY PAINT PER PAINTING SPECIFICATIONS
 - WETWELL WALLS AND CEILING SHALL BE COATED WITH SEPPER COAT ACCORDING TO SPECIFICATION SECTION 2956.
 - REPLACE EXISTING ENTRANCE DOORS WITH FIBER GLASS DOORS. (ONE SINGLE DOOR AND ONE DOUBLE DOOR).
 - ALL PIPING SHALL HAVE S.S. BOLTS AND WASHERS TO INCLUDE BELOW GROUND AND ABOVE GROUND.
 - ALL EXPOSED D.I. PIPING SHALL BE FREE FROM ASPHALTIC COATING BEFORE FINAL COATING/PAINTING. CONTRACTOR TO SPECIAL ORDER OR SAND BLAST ASPHALTIC COATING TO WHITE METAL CONDITION FOR EXPOSED D.I. PIPING.
 - CONTRACTOR TO REMOVE AND REPLACE ANY EXISTING DAMAGED PIPING & CONDUIT AND ADJUST PROPOSED PIPING TO AVOID CONFLICT.
 - ALL OUTSIDE CONCRETE AND BRICK SURFACES SHALL BE PRESSURE WASHED.
 - CONCRETE SURFACE ONLY SHALL BE PAINTED ACCORDING TO THE PAINT SPECIFICATION.
 - ALL FASCIA SHALL BE PAINTED ACCORDING TO PAINT SPECIFICATION.
 - ANY MODIFICATION TO NORMAL BGJWSC SYSTEM OPERATION IS TO BE REQUESTED IN WRITING AS A SERVICE INTERRUPTION REQUEST. DETAILED PLAN TO BE SUBMITTED AND APPROVED BY BGJWSC (48 HOURS MINIMUM) PRIOR TO COMMENCEMENT OF WORK.

PUMP STATION 4036 BY-PASS SEQUENCE

- LOCATE EXISTING SANITARY SEWER MANHOLE FOR PUMP STATION BY-PASS PIPING.
- INSTALL (2) TWO TEMPORARY BY-PASS PUMPS.
- INSTALL SUCTION PIPING FROM THE MANHOLE TO BOTH BY-PASS PUMPS.
- INSTALL TEMPORARY DISCHARGE PIPING FROM BOTH PUMPS TO THE EXISTING MANHOLE.
- INSTALL INFLATABLE PLUGS IN BY-PASS RECEIVING AND DISCHARGE MANHOLES.
- BEGIN OPERATION OF THE BY-PASS PUMPING STATION. UPON SUCCESSFUL OPERATION, PROCEED WITH ITEM #7
- DEMOLISH EXISTING EQUIPMENT, PUMPS, ETC. AS SHOWN ON DEMOLITION PLAN.
- COMPLETE CONSTRUCTION OF THE NEW PUMP STATION ACCORDING TO PLANS & SPECIFICATIONS, AND FOLLOW BY A SUCCESSFUL START-UP.
- DISCONNECT 12" BY-PASS PIPING.
- REMOVE INFLATABLE PLUGS FROM THE MANHOLES.
- RESUME OPERATION OF NEW PUMP STATION.
- REMOVE ALL TEMPORARY PUMPS, PIPING, VALVES, ETC. AFTER NORMAL OPERATION BEGINS



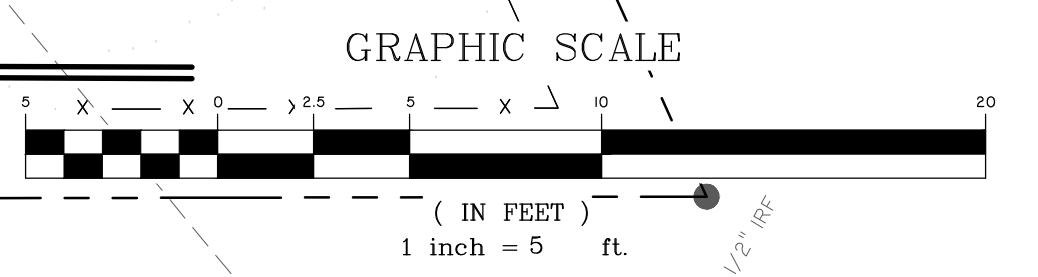
NO.	REVISIONS	BY	DATE
1	REVISED PER ADDENDUM NO. 2	CDR	2-24-20

THOMAS & HUTTON
 50 Park of Commerce Way
 Savannah, GA 31405 • 912.234.3300
 www.thomasandhutton.com

BRUNSWICK-GLYNN JOINT WATER AND SEWER COMMISSION
 BRUNSWICK, GA
 206 SP. LOST NORTH MAINLAND PPH-II PUMP STATION IMPROVEMENTS
SITE PLAN - PS 4036 BY-PASS PIPING

JOB NO:	J-27784.0000
DATE:	8/22/19
DRAWN:	CDR
DESIGNED:	CDR
REVIEWED:	FS
APPROVED:	FS
SCALE:	1" = 5'

C2.1





NOTE TO CONTRACTOR:

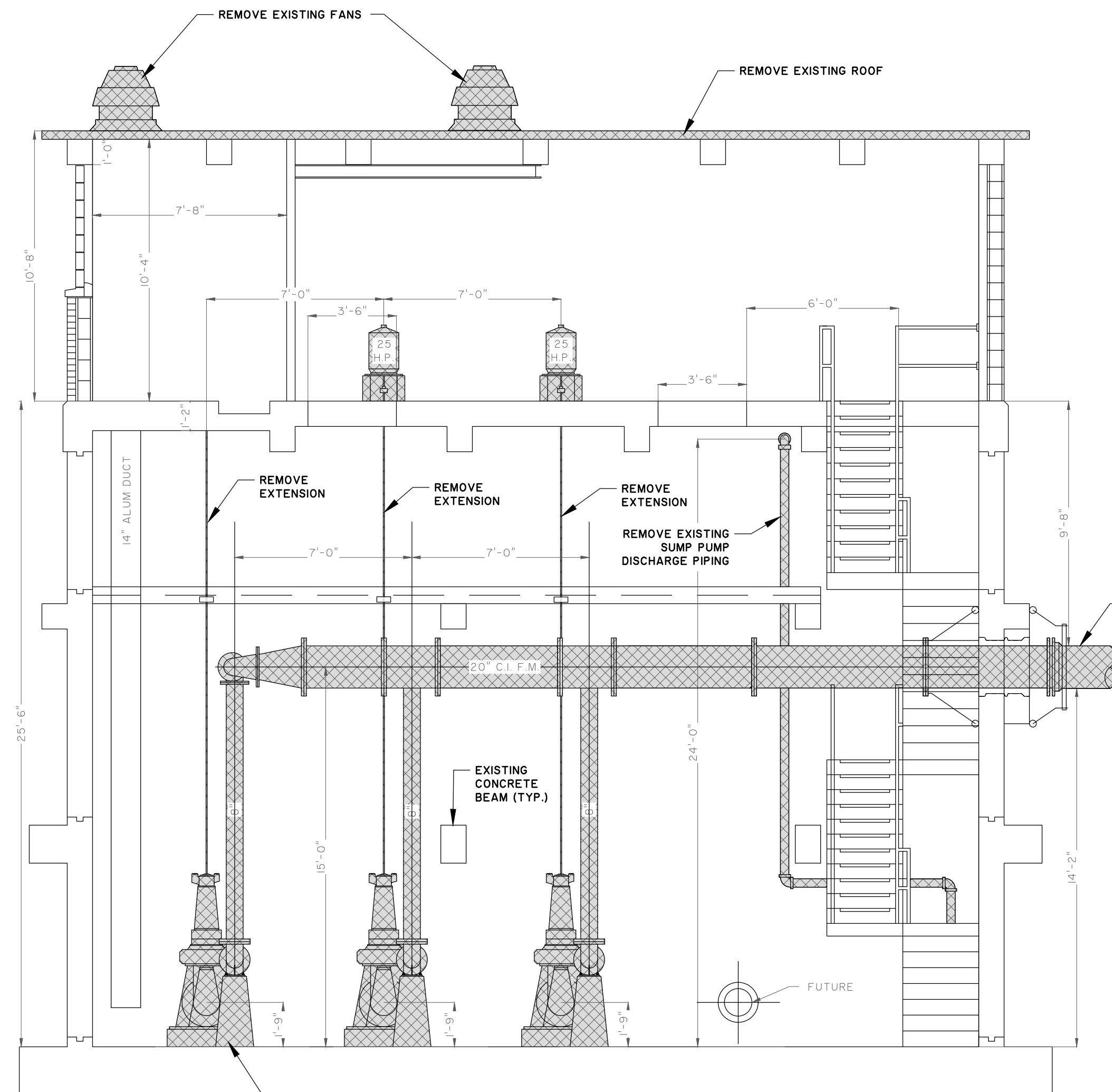
1. REPLACE PUMP STATION EXISTING ROOF WITH NEW BUILD-UP ROOF TO INCLUDE NEW FLASHING AND NEW PRESSURE TREATED WOOD TRIM.
2. CONTRACTOR TO PAINT ALL THE INTERIOR WALLS, FLOORS AND CEILING WITH EPOXY PAINT PER PAINTING SPECIFICATIONS
3. WETWELL WALLS AND CEILING SHALL BE COATED WITH SEWPER COAT ACCORDING TO SPECIFICATION SECTION 2956.
4. REPLACE EXISTING ENTRANCE DOORS WITH FIBER GLASS DOORS. (ONE SINGLE DOOR AND ONE DOUBLE DOOR).
5. ALL PIPING SHALL HAVE S.S. BOLTS AND WASHERS TO INCLUDE BELOW GROUND AND ABOVE GROUND.
6. ALL EXPOSED D.I. PIPING SHALL BE FREE FROM ASPHALTIC COATING BEFORE FINAL COATING/PAINTING. CONTRACTOR TO SPECIAL ORDER OR SAND BLAST ASPHALTIC COATING TO WHITE METAL CONDITION FOR EXPOSED D.I. PIPING.
7. CONTRACTOR TO REMOVE AND REPLACE ANY EXISTING DAMAGED PIPING & CONDUIT AND ADJUST PROPOSED PIPING TO AVOID CONFLICT.
8. ALL OUTSIDE CONCRETE AND BRICK SURFACES SHALL BE PRESSURE WASHED.
9. CONCRETE SURFACE ONLY SHALL BE PAINTED ACCORDING TO THE PAINT SPECIFICATION.
10. ALL FASCIA SHALL BE PAINTED ACCORDING TO PAINT SPECIFICATION.
11. ANY MODIFICATION TO NORMAL BGJWSC SYSTEM OPERATION IS TO BE REQUESTED IN WRITING AS A SERVICE INTERRUPTION REQUEST. DETAILED PLAN TO BE SUBMITTED AND APPROVED BY BGJWSC (48 HOURS MINIMUM) PRIOR TO COMMENCEMENT OF WORK.

LEGEND

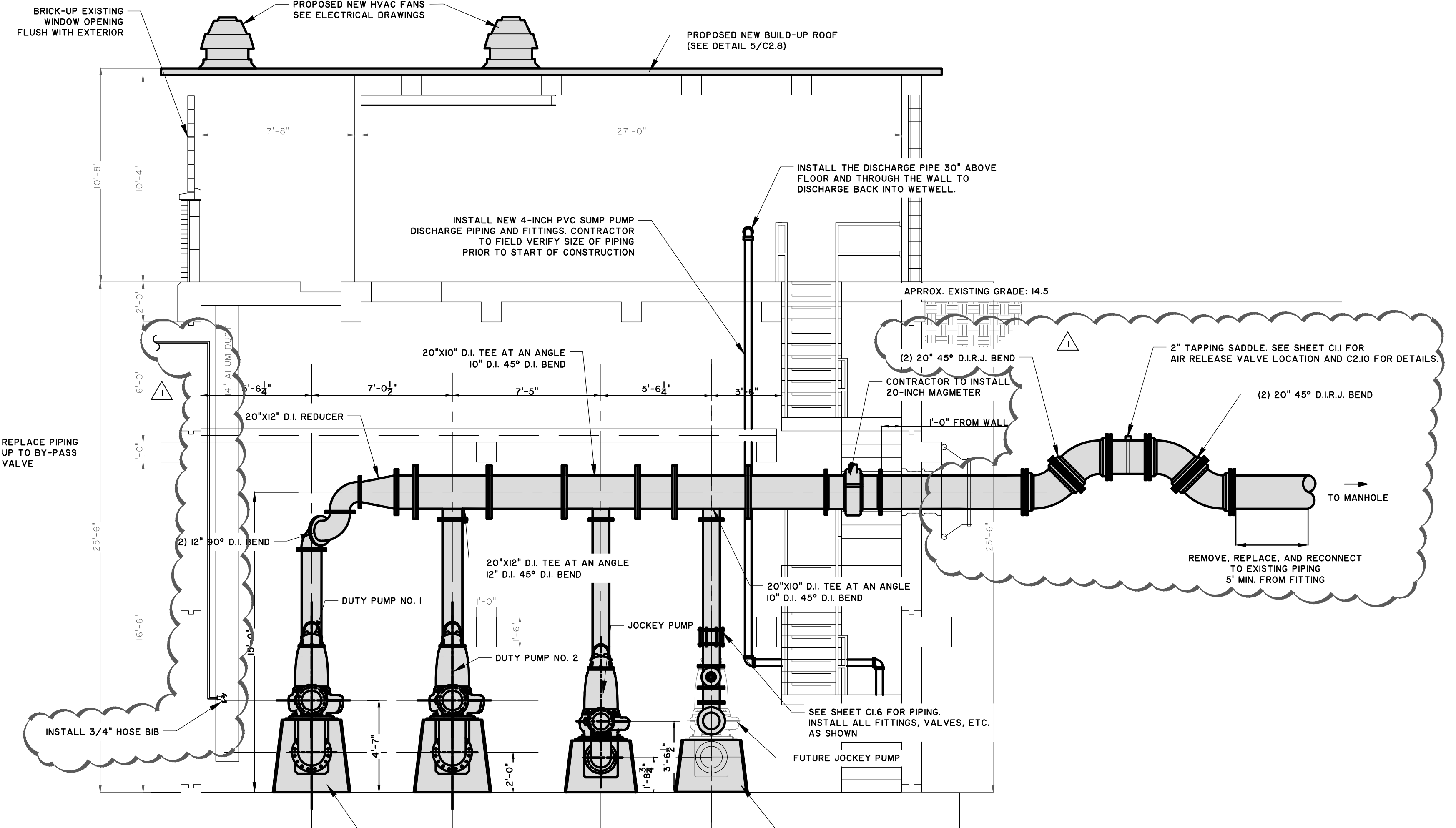
TO BE REMOVED AND DISPOSED OFFSITE*

PROPOSED NEW INSTALLATION

*CONSULT WITH OWNER BEFORE DISPOSAL



1 EXISTING PUMP STATION DEMOLITION ELEVATION FACING EAST
 C1.5 SCALE: 1/4" = 1'-0"



2 MODIFICATION TO PUMP STATION ELEVATION FACING EAST
 C1.5 SCALE: 1/4" = 1'-0"

NO.	REVISIONS	BY	DATE
1	REVISED PER ADDENDUM NO. 2		2-24-20

THOMAS & HUTTON
 50 Park of Commerce Way
 Savannah, GA 31405 • 912.234.5300
 www.thomasandhutton.com

BRUNSWICK-GLYNN JOINT WATER AND SEWER COMMISSION
 BRUNSWICK, GA
 206 SP. LOST NORTH MAINLAND PPH-PUMP STATION IMPROVEMENTS
PS 4035 -ELEVATION FACING EAST

JOB NO:	J-27784.0000
DATE:	8/22/19
DRAWN:	CDR
DESIGNED:	CDR
REVIEWED:	FS
APPROVED:	FS
SCALE:	1/4" = 1'



C1.5



LEGEND

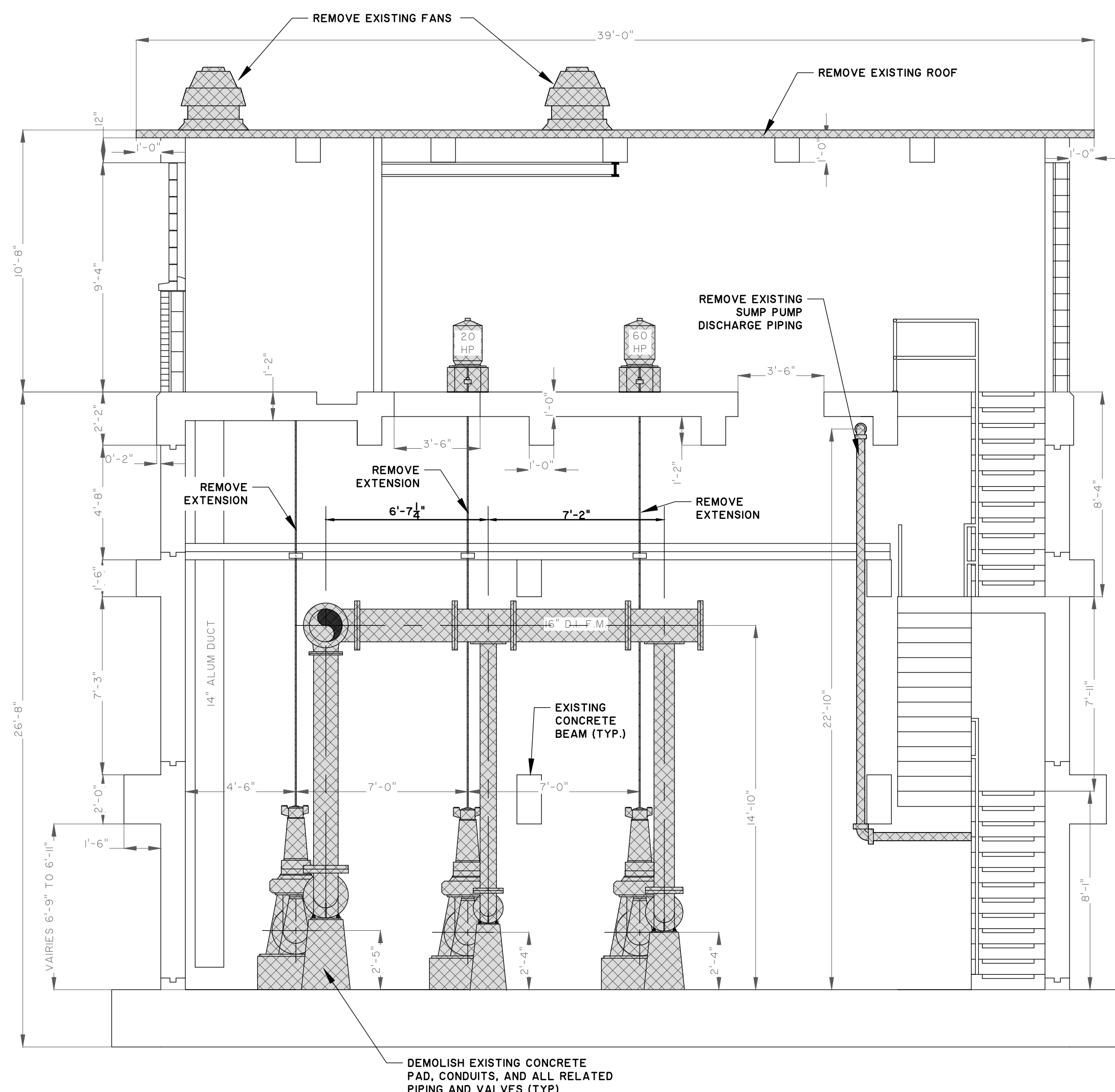
TO BE REMOVED AND DISPOSED OFFSITE*

PROPOSED NEW INSTALLATION

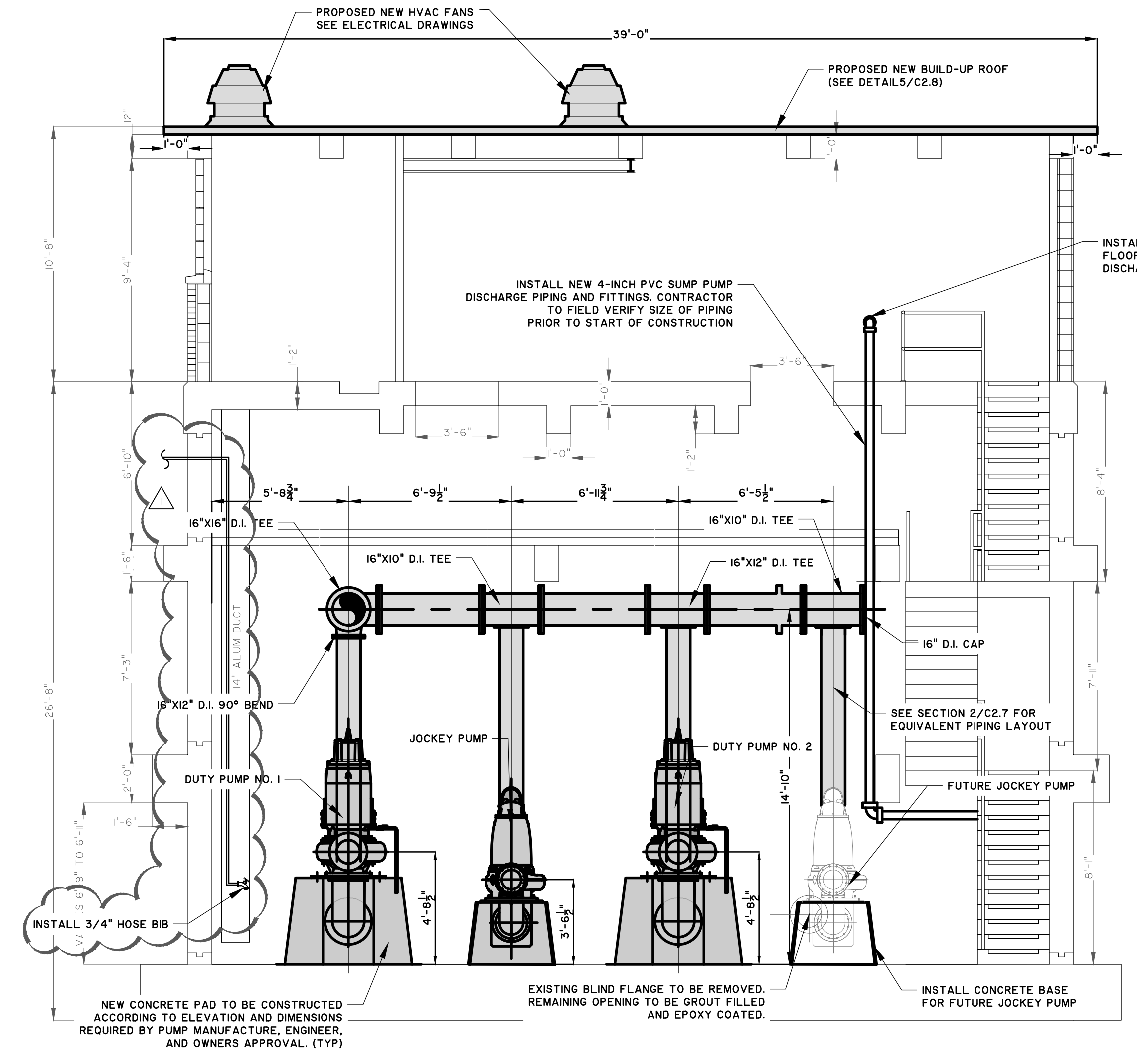
*CONSTULT WITH OWNER BEFORE DISPOSAL

NOTE TO CONTRACTOR:

1. REPLACE PUMP STATION EXISTING ROOF WITH NEW BUILD-UP ROOF TO INCLUDE NEW FLASHING AND NEW PRESSURE TREATED WOOD TRIM.
2. CONTRACTOR TO PAINT ALL THE INTERIOR WALLS, FLOORS AND CEILING WITH EPOXY PAINT PER PAINTING SPECIFICATIONS
3. WETWELL WALLS AND CEILING SHALL BE COATED WITH SEWPER COAT ACCORDING TO SPECIFICATION SECTION 2956.
4. REPLACE EXISTING ENTRANCE DOORS WITH FIBER GLASS DOORS. (ONE SINGLE DOOR AND ONE DOUBLE DOOR).
5. ALL PIPING SHALL HAVE S.S. BOLTS AND WASHERS TO INCLUDE BELOW GROUND AND ABOVE GROUND.
6. ALL EXPOSED D.I. PIPING SHALL BE FREE FROM ASPHALTIC COATING BEFORE FINAL COATING/PAINTING. CONTRACTOR TO SPECIAL ORDER OR SAND BLAST ASPHALTIC COATING TO WHITE METAL CONDITION FOR EXPOSED D.I. PIPING.
7. CONTRACTOR TO REMOVE AND REPLACE ANY EXISTING DAMAGED PIPING & CONDUIT AND ADJUST PROPOSED PIPING TO AVOID CONFLICT.
8. ALL OUTSIDE CONCRETE AND BRICK SURFACES SHALL BE PRESSURE WASHED.
9. CONCRETE SURFACE ONLY SHALL BE PAINTED ACCORDING TO THE PAINT SPECIFICATION.
10. ALL FASCIA SHALL BE PAINTED ACCORDING TO PAINT SPECIFICATION.
- II. ANY MODIFICATION TO NORMAL BGJWSC SYSTEM OPERATION IS TO BE REQUESTED IN WRITING AS A SERVICE INTERRUPTION REQUEST. DETAILED PLAN TO BE SUBMITTED AND APPROVED BY BGJWSC (48 HOURS MINIMUM) PRIOR TO COMMENCEMENT OF WORK.



1 EXISTING PUMP STATION DEMOLITION ELEVATION FACING SOUTHWEST
SCALE: 1/4" = 1'



2 MODIFICATION TO PUMP STATION ELEVATION FACING SOUTHWEST
SCALE: 1/4" = 1'

NO.	REVISIONS	BY	DATE
1	REVISED PER ADDENDUM NO. 2	CDR	2-24-20

THOMAS & HUTTON
50 Park of Commerce Way
Savannah, GA 31405 • 912.234.5300
www.thomasandhutton.com

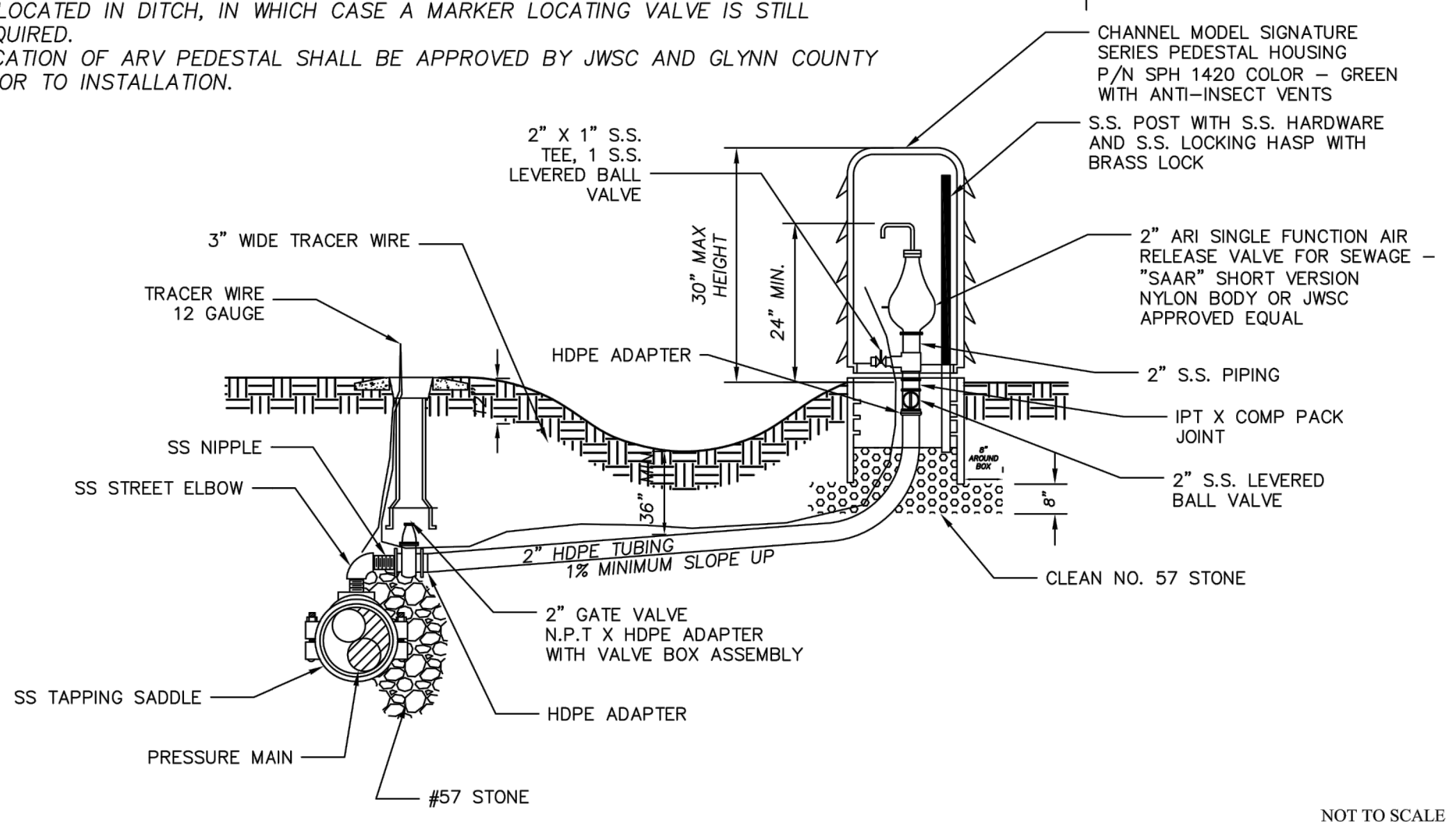
BRUNSWICK-GLYNN JOINT WATER AND SEWER COMMISSION
BRUNSWICK, GA
206 S. LOST NORTH MAINLAND PH-I PUMP STATION IMPROVEMENTS
PS 4036 - ELEVATION FACING SOUTHWEST

JOB NO:	J-27784.0000
DATE:	8/22/19
DRAWN:	CDR
DESIGNED:	CDR
REVIEWED:	FS
APPROVED:	FS
SCALE:	1/4" = 1'

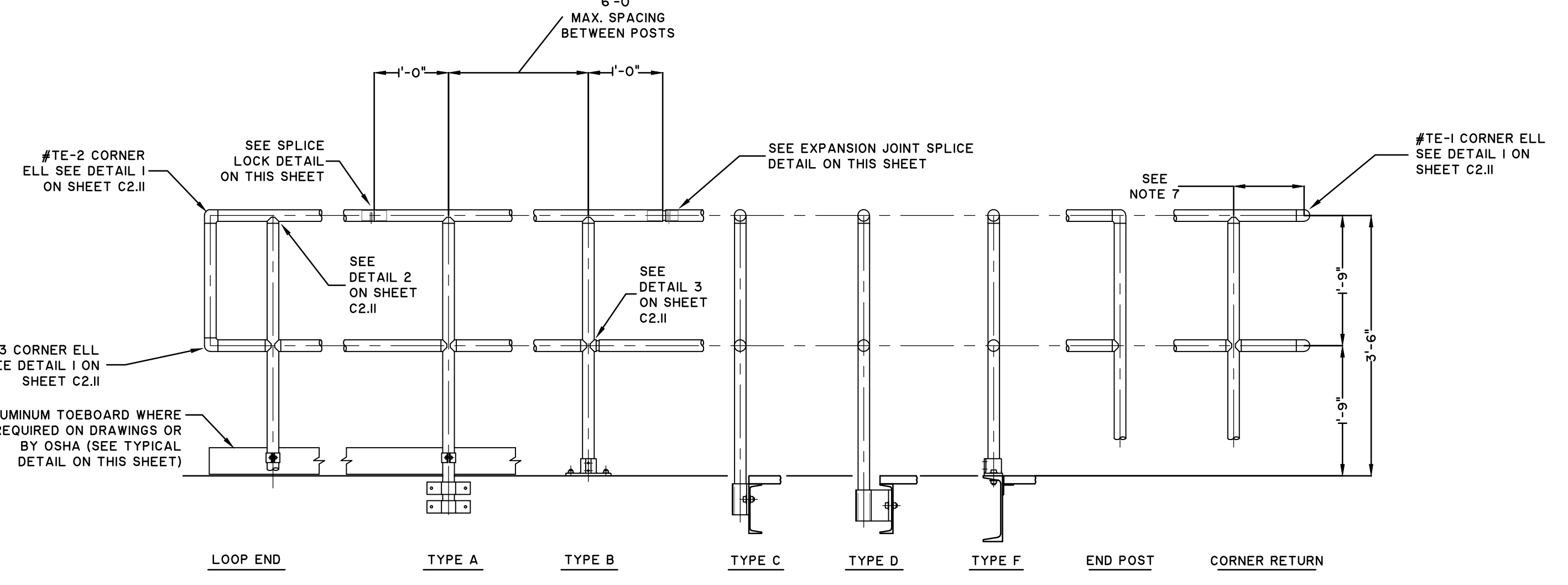


C2.5

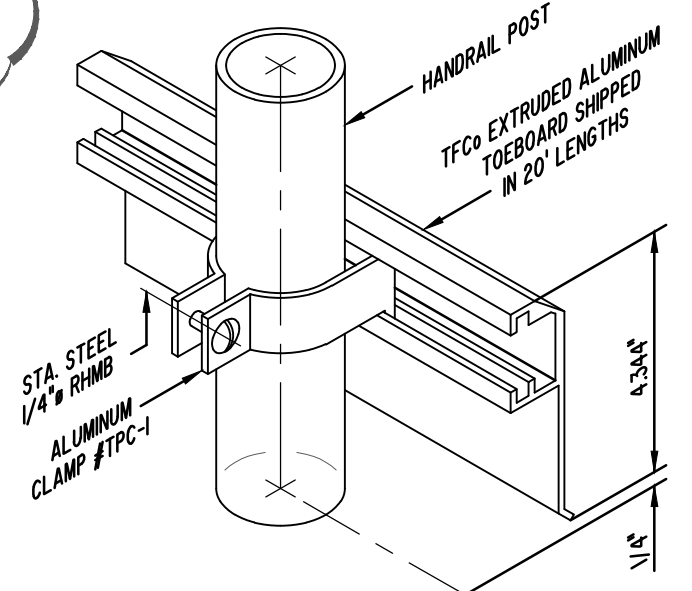
- NOTES:
1. PIPING, NIPPLES, PLUGS & BALL VALVES AND TAPPING SADDLES TO BE 316 SERIES STAINLESS STEEL OR AS NOTED.
 2. 3/8" MINIMUM COVER ON HDPE TUBING TO WITHIN 12" OF PEDESTAL.
 3. VALVE SHALL BE INSTALLED WITH A TWO-PIECE CAST IRON VALVE BOX, COVER WITH "SEWER" STAMPED ON IT, AND PRECAST CONCRETE MARKER. UNLESS VALVE IS LOCATED IN DITCH, IN WHICH CASE A MARKER LOCATING VALVE IS STILL REQUIRED.
 4. LOCATION OF ARV PEDESTAL SHALL BE APPROVED BY JWSC AND GLYNN COUNTY PRIOR TO INSTALLATION.



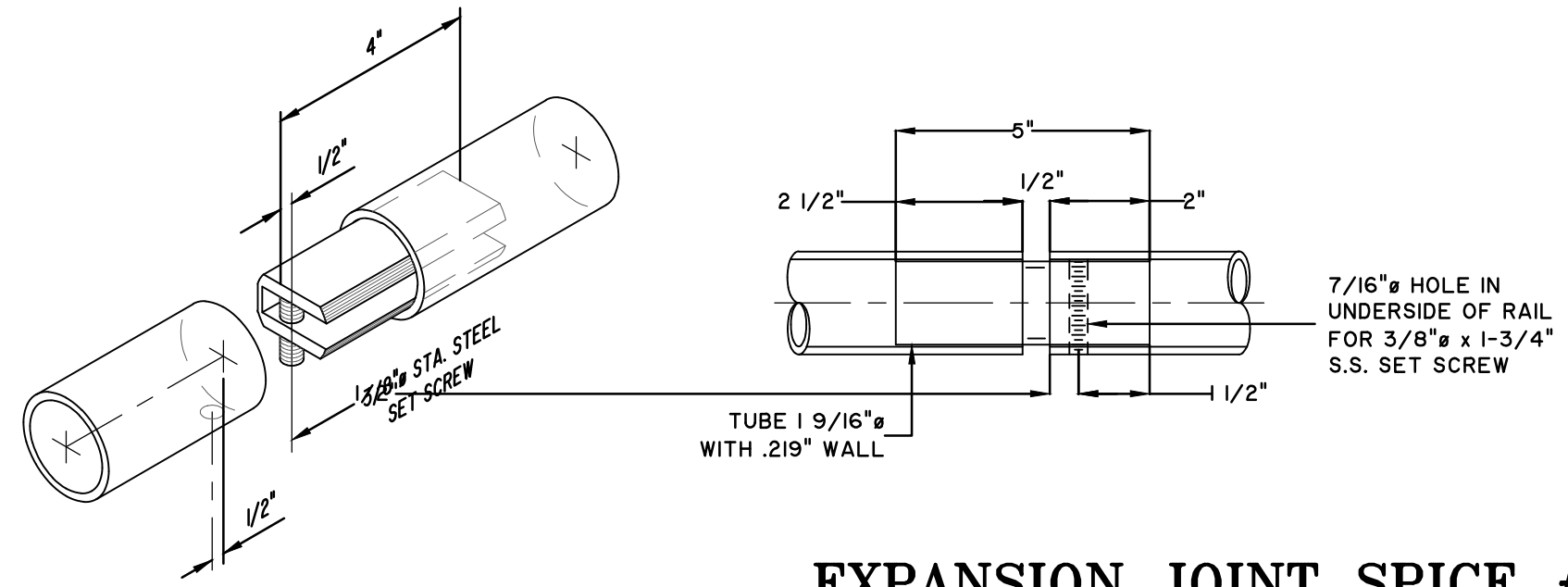
	BRUNSWICK-GLYNN COUNTY JOINT WATER & SEWER COMMISSION 1703 Gloucester Street Brunswick, Georgia 31520 Website: www.bgjwsc.org	SEWER AIR RELEASE VALVE PEDESTAL ASSEMBLY DETAIL JWSC STANDARD DETAIL 4-4A Date: JANUARY 2017
	NOT TO SCALE	



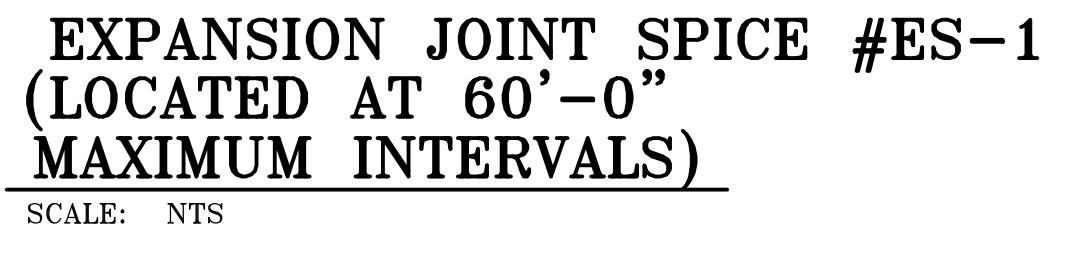
TYPICAL HANDRAIL
SCALE: NTS



TOEBOARD DETAILS
SCALE: NTS



SPLICE LOCK #SL-1
SCALE: NTS



EXPANSION JOINT SPICE #ES-1
(LOCATED AT 60'-0\"/>

1
C2.10

2-LINE COMPONENT HANDRAIL
IN COMPLIANCE WITH OSHA

SCALE: NOT TO SCALE

- OSHA DESIGN SPECIFICATIONS
1. HANDRAIL SHALL BE THE PRODUCT OF A COMPANY NORMALLY ENGAGED IN THE MANUFACTURE OF PIPE RAILING. RAILING SHALL BE SHOP ASSEMBLED IN LENGTHS NOT TO EXCEED 24 FEET FOR FIELD ERECTION.
 2. HANDRAILS SHALL BE DESIGNED TO WITHSTAND 200# CONCENTRATED LOAD APPLIED IN ANY DIRECTION TO THE TOP RAIL.
 3. THE MANUFACTURER SHALL SUBMIT CALCULATIONS TO THE ENGINEER FOR APPROVAL. TESTING OF BASE CASTINGS OR BASE EXTRUSIONS BY AN INDEPENDENT LAB OR MANUFACTURER'S LAB (IF MANUFACTURER'S LAB MEETS THE REQUIREMENTS OF THE ALUMINUM ASSOCIATION) WILL BE AN ACCEPTABLE SUBSTITUTE FOR CALCULATIONS. CALCULATIONS WILL BE REQUIRED FOR APPROVAL OF ALL OTHER DESIGN ASPECTS.
 4. POST SPACING SHALL BE A MAXIMUM OF 6'-0". POSTS AND RAILINGS SHALL BE A MINIMUM OF 1-1/2" SCHEDULE 40 ALUMINUM PIPE ALLOY 6105-T5, ASTM-B-429 OR ASTM-B-221. THE HANDRAIL MANUFACTURER SHALL SHOW THAT THEIR POSTS ARE OF ADEQUATE STRENGTH TO MEET THE LOADING REQUIREMENTS. IF THE MANUFACTURER'S POSTS ARE NOT OF ADEQUATE STRENGTH, THE MANUFACTURER MAY REDUCE THE POST SPACING OR ADD REINFORCING DOWELS OR MAY DO BOTH IN ORDER TO MEET THE LOADING REQUIREMENTS.
 5. THE HANDRAIL SHALL BE MADE OF PIPES JOINED TOGETHER WITH COMPONENT FITTINGS. SAMPLES OF ALL COMPONENTS, BASES, TOE PLATE AND PIPE MUST BE SUBMITTED FOR APPROVAL. COMPONENTS THAT ARE POP-RIVETED OR GLUED AT THE JOINTS WILL NOT BE ACCEPTABLE. ALL COMPONENTS MUST BE MECHANICALLY FASTENED WITH STAINLESS STEEL HARDWARE. HANDRAIL AND COMPONENTS SHALL BE TUF RAIL, AS MANUFACTURED BY THOMPSON FABRICATING COMPANY (BIRMINGHAM, ALABAMA) OR AN APPROVED EQUAL. POSTS SHALL NOT INTERRUPT THE CONTINUATION OF THE TOP RAIL AT ANY POINT ALONG THE RAILING, INCLUDING CORNERS AND END TERMINATIONS (OSHA 1910.23). THE TOP SURFACE OF THE TOP RAILING SHALL BE SMOOTH AND SHALL NOT BE INTERRUPTED BY PROJECTED FITTINGS.
 7. THE MIDRAIL AT A CORNER RETURN SHALL BE ABLE TO WITHSTAND A 200# LOAD WITHOUT LOOSENING. THE MANUFACTURER IS TO DETERMINE THIS DIMENSION FOR THEIR SYSTEM. PROVIDE PHYSICAL TESTS FROM A LABORATORY TO CONFIRM COMPLIANCE.
 8. EXPANSION BOLTS SHALL BE SPACED 10D APART AND 5D EDGE DISTANCE FOR NO REDUCTION IN PULLOUT STRENGTH. A SAFETY FACTOR OF 4 SHALL BE USED ON EXPANSION BOLT PULLOUT VALUES PUBLISHED BY THE MANUFACTURER. EXPANSION BOLTS SHALL BE STAINLESS STEEL TYPE 18-8 WEDGE BOLTS AND SHALL BE FURNISHED BY THE HANDRAIL MANUFACTURER.
 9. TOE PLATE SHALL CONFORM TO OSHA STANDARDS. TOE PLATE SHALL BE A MINIMUM OF 4" HIGH AND SHALL BE AN EXTRUSION THAT ATTACHES TO THE POSTS WITH CLAMPS WHICH WILL ALLOW FOR EXPANSION AND CONTRACTION BETWEEN POSTS. TOE PLATES SHALL BE SET 1/4" ABOVE THE WALKING SURFACE. TOE PLATES SHALL BE PROVIDED ON HANDRAILS AS REQUIRED BY OSHA AND/OR AS SHOWN ON DRAWINGS. TOE PLATES SHALL BE SHIPPED LOOSE IN STOCK LENGTHS WITH PRE-MANUFACTURED CORNERS FOR FIELD INSTALLATION. OPENINGS IN THE RAILING SHALL BE GUARDED BY A SELF-CLOSING GATE (OSHA 1910.23). SAFETY CHAINS SHALL NOT BE USED UNLESS SPECIFICALLY SHOWN ON THE DRAWINGS.
 11. FINISH SHALL BE ALUMINUM ASSOCIATION M10-C22-A41 (215-RI). THE PIPE SHALL BE PLASTIC-WRAPPED. THE PLASTIC WRAP IS TO BE REMOVED AFTER ERECTION.
 12. ALUMINUM SURFACES IN CONTACT WITH CONCRETE, GROUT OR DISSIMILAR METALS WILL BE PROTECTED WITH A COAT OF BITUMINOUS PAINT, MYLAR ISOLATORS OR OTHER APPROVED MATERIAL.



NO.	1	REVISED PER ADDENDUM NO. 2	BY	CDR	DATE
					2-24-20

THOMAS & HUTTON
 50 Park of Commerce Way
 Savannah, GA 31405 • 912.234.5300
 www.thomasandhutton.com

BRUNSWICK-GLYNN JOINT WATER AND SEWER COMMISSION
 BRUNSWICK, GA
 2016 SPOST NORTH MAINLAND PH-II PUMP STATION IMPROVEMENTS
PUMP STATION HANDRAIL DETAILS

JOB NO:	J-27784.0000
DATE:	8/22/19
DRAWN:	CDR
DESIGNED:	CDR
REVIEWED:	FS
APPROVED:	FS
SCALE:	1" = 1'

C2.10