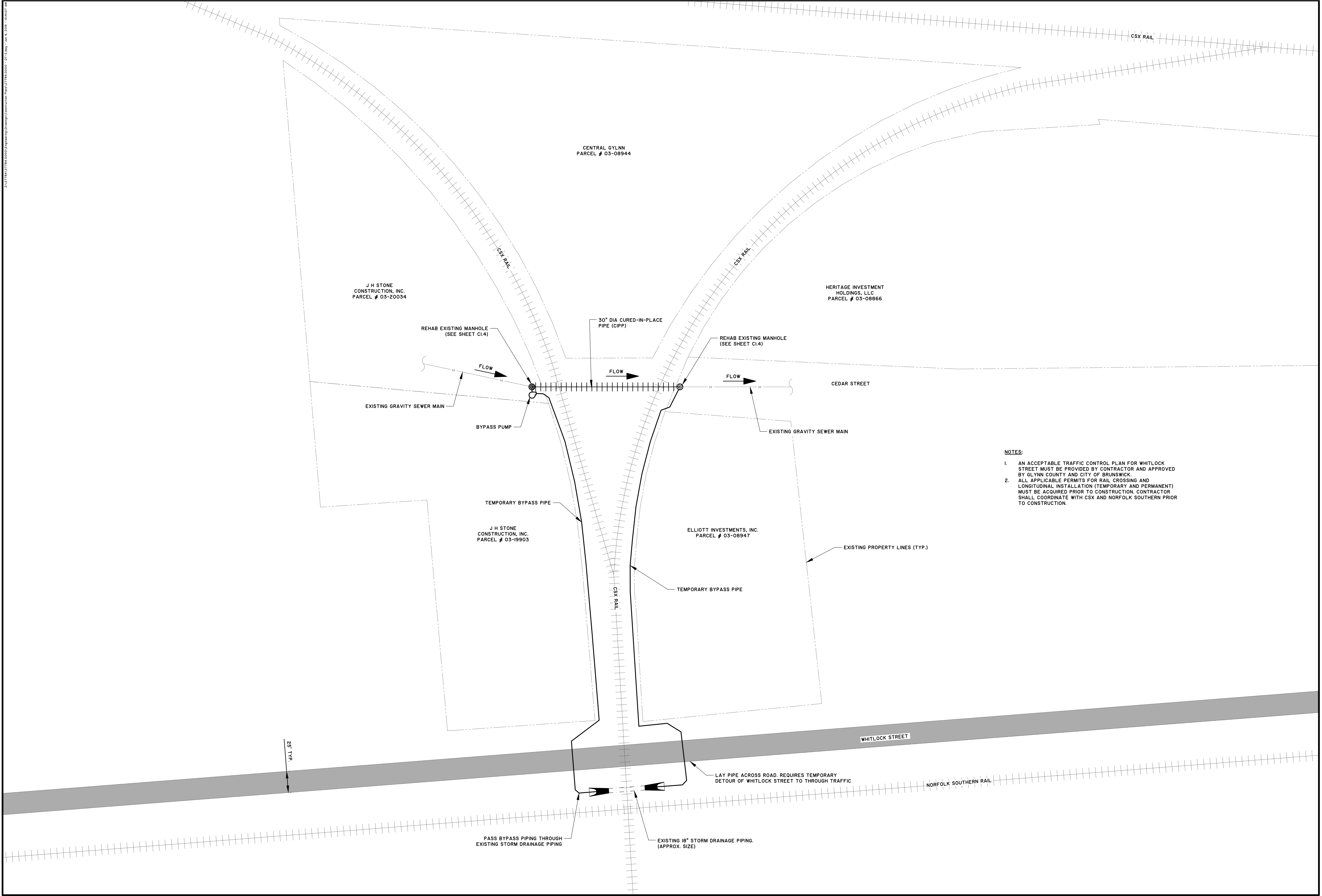
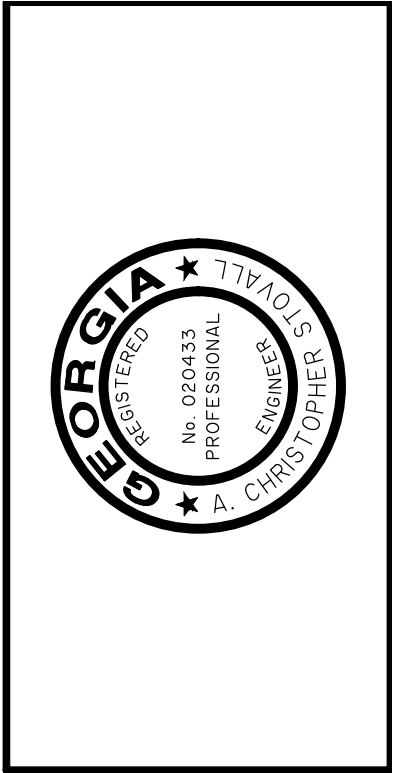


ENR 278427784.0000/Engineering/Construction/Plans/2784.0000 - 0172.dwg - 04.12.2019 - 09:02:07 AM



- NOTES:**
1. AN ACCEPTABLE TRAFFIC CONTROL PLAN FOR WHITLOCK STREET MUST BE PROVIDED BY CONTRACTOR AND APPROVED BY GLYNN COUNTY AND CITY OF BRUNSWICK.
 2. ALL APPLICABLE PERMITS FOR RAIL CROSSING AND LONGITUDINAL INSTALLATION (TEMPORARY AND PERMANENT) MUST BE ACQUIRED PRIOR TO CONSTRUCTION. CONTRACTOR SHALL COORDINATE WITH CSX AND NORFOLK SOUTHERN PRIOR TO CONSTRUCTION.



NO.	REVISIONS	BY	DATE

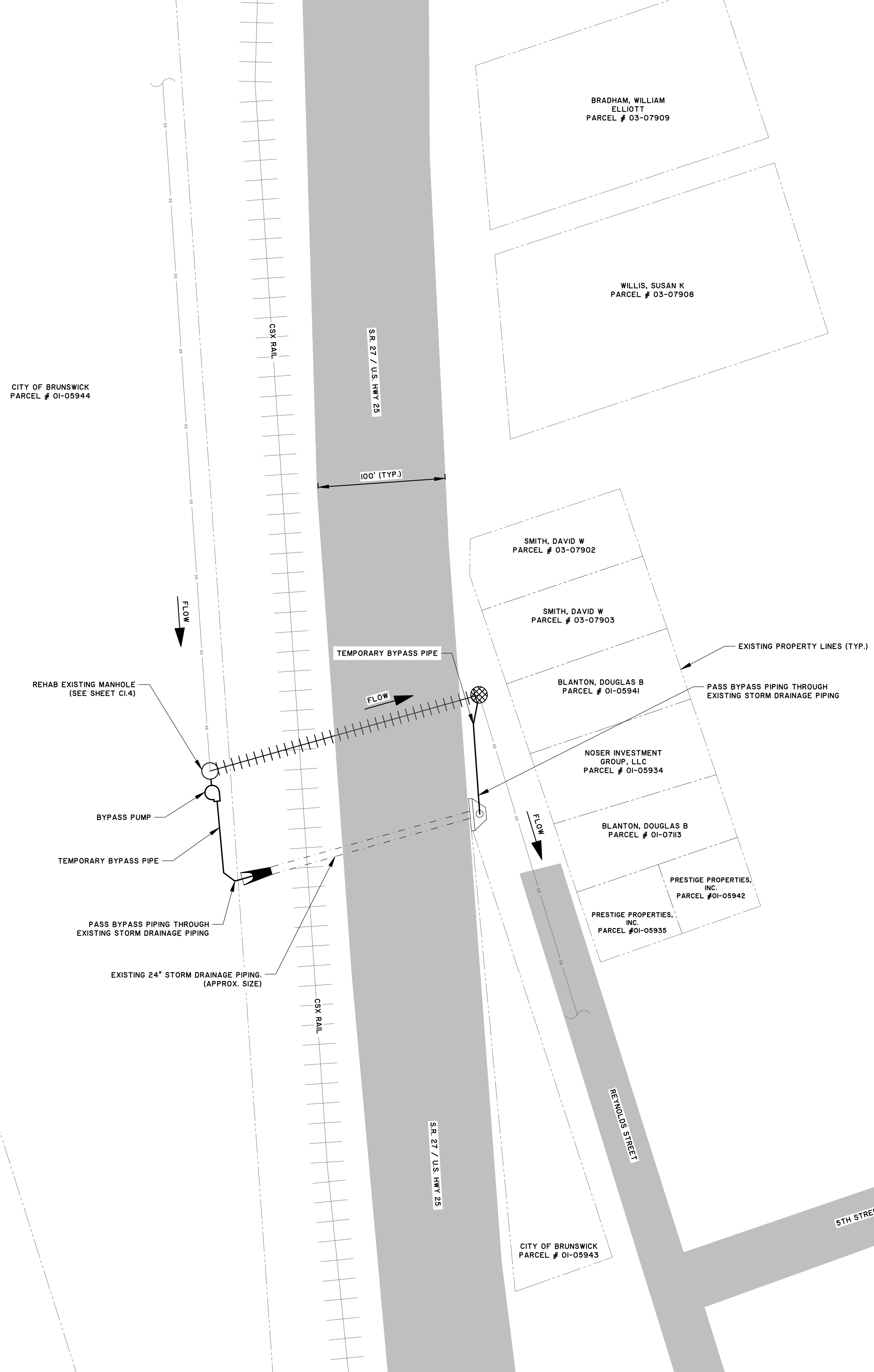
THOMAS & HUTTON
 ENGINEERS
 50 Park of Commerce Way
 Savannah, GA 31405 • 912.234.5300
 www.thomasandhutton.com

BRUNSWICK-GLYNN COUNTY JOINT WATER & SEWER COMMISSION
GLYNN COUNTY, GEORGIA
 NORTH MAINLAND PHASE II AND III IMPROVEMENTS
 BYPASS PUMPING SCHEMATIC FOR SSMH #40350140 TO #40350130

JOB NO:	J-27763.0000
DATE:	5/1/19
DRAWN:	MLC
DESIGNED:	SDG
REVIEWED:	ACS
APPROVED:	ACS
SCALE:	1" = 1'

C2.9

PRELIMINARY - DO NOT USE FOR CONSTRUCTION



NOTES:
 1. ALL APPLICABLE PERMITS FOR RAIL CROSSING AND LONGITUDINAL INSTALLATION (TEMPORARY AND PERMANENT) MUST BE ACQUIRED PRIOR TO CONSTRUCTION. CONTRACTOR SHALL COORDINATE WITH CSX AND NORFOLK SOUTHERN PRIOR TO CONSTRUCTION.



NO.	REVISIONS	BY	DATE

THOMAS & HUTTON
 50 Park of Commerce Way
 Savannah, GA 31405 • 912.234.5300
 www.thomasandhutton.com

BRUNSWICK-GLYNN COUNTY JOINT WATER & SEWER COMMISSION
GLYNN COUNTY, GEORGIA
 BGJWSC NORTH MAINLAND PHASE II AND III IMPROVEMENTS
 BYPASS PUMPING SCHEMATIC FROM SSMH #4WTP0270 TO #4WTP0260

JOB NO: J-27784.0000
 DATE: 5/1/19
 DRAWN: MLC
 DESIGNED: SSB
 REVIEWED: ACS
 APPROVED: ACS
 SCALE: 1" = 1'