



DEPARTMENT OF THE ARMY
U.S. ARMY CORPS OF ENGINEERS, SAVANNAH DISTRICT
100 W OGLETHORPE AVENUE
SAVANNAH, GEORGIA 31401-3604

June 1, 2018

Regulatory Branch
SAS-2017-00989

Mr. Jimmy Junkin
Brunswick Glynn Joint Water Sewer Commission
1703 Gloucester Street
Brunswick, Georgia 31520

Dear Mr. Junkin:

I refer to a letter dated December 4, 2017, submitted on your behalf by Mr. Michael DeMell of Environmental Services, Inc., requesting a delineation of aquatic resources within a 44 acre project area that encompasses a 2.7 mile corridor adjacent to Harry Driggers Boulevard in Glynn County, Georgia (Latitude 31.2629, Longitude - 81.4914). This project has been assigned number SAS-2017-00989 and it is important that you refer to this number in all communication concerning this matter.

The enclosed survey entitled "Wetlands Exhibit: Sanitary Sewer Force Main Improvements Harry Driggers Boulevard (SPLOST III) 1356th GMD, Glynn County, Georgia", dated October 16, 2017, and signed by Registered Land Surveyor Thomas W. Hurley, identifies the delineation limits of all aquatic resources within the review area. The wetlands were delineated in accordance with criteria contained in the 1987 "Corps of Engineers Wetland Delineation Manual," as amended by the most recent regional supplements to the manual. This delineation will remain valid for a period of 5-years unless new information warrants revision prior to that date.

If you intend to sell property that is part of a project that requires Department of the Army Authorization, it may be subject to the Interstate Land Sales Full Disclosure Act. The Property Report required by Housing and Urban Development Regulation must state whether, or not a permit for the development has been applied for, issued or denied by the U.S. Army Corps of Engineers (Part 320.3(h) of Title 33 of the Code of Federal Regulations).

This communication does not convey any property rights, either in real estate or material, or any exclusive privileges. It does not authorize any injury to property, invasion of rights, or any infringement of federal, state or local laws, or regulations. It does not obviate your requirement to obtain state or local assent required by law for the development of this property. If the information you have submitted, and on which the U.S. Army Corps of Engineers has based its determination is later found to be in error, this decision may be revoked.

A copy of this letter is being provided to the following party: Mr. Michael DeMell, Environmental Services, Inc., 101 B Estus Drive, Savannah, Georgia 31404.

Thank you in advance for completing our on-line Customer Survey Form located at http://corpsmapu.usace.army.mil/cm_apex/f?p=regulatory_survey. We value your comments and appreciate your taking the time to complete a survey each time you have interaction with our office.

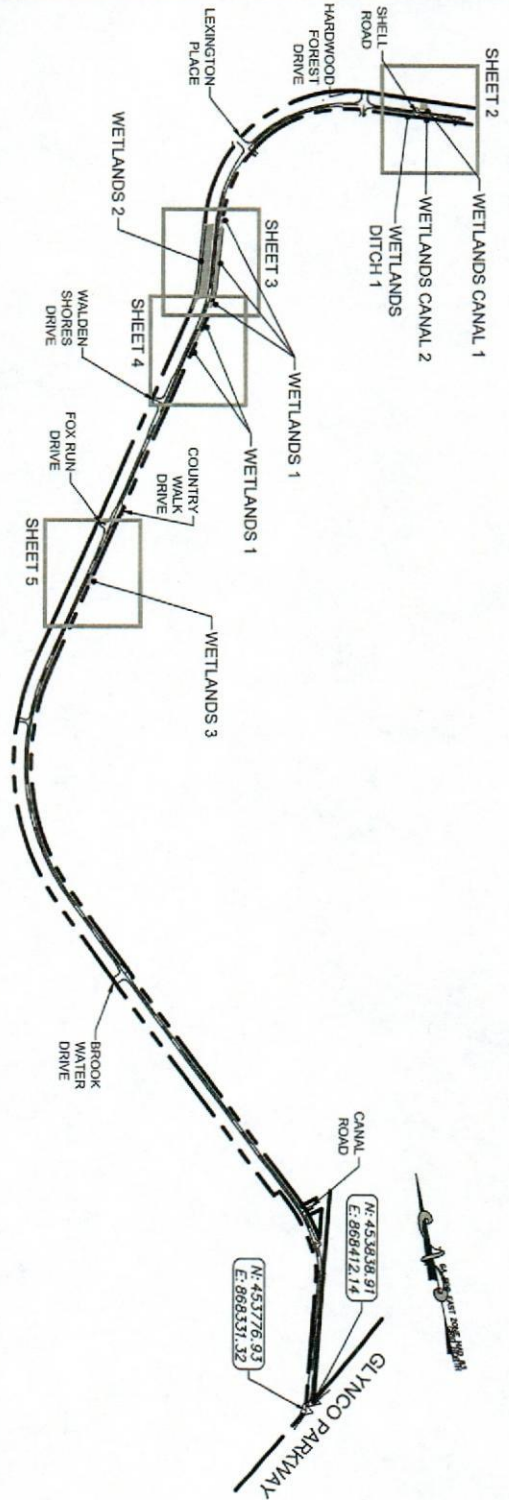
If you have any questions, please call me at (912) 652-5690.

Sincerely,



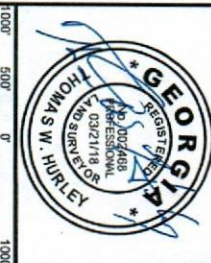
Skye H. Stockel
Regulatory Specialist, Coastal Section

Enclosures



HARRY DRIGGERS BLVD

WETLANDS CANAL 1:	810 SF
WETLANDS CANAL 2:	252 SF
WETLANDS DITCH:	3,652 SF
WETLANDS 1:	197 SF
WETLANDS 2:	5,457 SF
WETLANDS 3:	59 SF
WETLANDS 4:	1,328 SF
WETLANDS 5:	46,830 SF
TOTAL:	60,213 SF



PROJECT NO.: 17-5040
 DRAWN BY: REB
 DESIGNED BY: REB
 SURVEYED BY: JH
 SURVEY DATE: 10-16-2017
 CHECKED BY: TWH
 SCALE: 1" = 100'
 DATE: 03-14-18

SHEET 1

OF 5

WETLANDS EXHIBIT

SANITARY SEWER FORCE MAIN IMPROVEMENTS
 HARRY DRIGGERS BOULEVARD (SPLOST III)
 1356TH GMD, GLYNN COUNTY, GEORGIA

Prepared for:
 BRUNSWICK-GLYNN JOINT WATER & SEWER COMMISSION

EMC ENGINEERING SERVICES, INC.
 501 Gloucester Street
 Brunswick, Georgia 31520
 P: (912) 265-7838
 F: (912) 233-4560
 www.emc-eng.com

Land Surveying Firm No. 000051

THOMAS W. HURLEY, R.L.S.
 GA LICENSE No. 2468
 3-14-2018

Land Surveying Firm No. 000051

WETLANDS CANAL 1		
LINE#	DIRECTION	LENGTH
L1	N70° 15' 20"W	20.30
L2	N65° 56' 12"W	32.08
L3	S07° 43' 43"W	2.47
L4	N70° 15' 20"W	55.21
L5	N06° 38' 26"E	0.71
L6	S76° 44' 47"E	27.59
L7	N83° 18' 32"E	17.87
L8	S67° 45' 04"E	63.81
L9	S19° 49' 20"W	8.98

WETLANDS DITCH		
LINE#	DIRECTION	LENGTH
L10	N70° 15' 20"W	25.08
L11	N36° 16' 36"E	2.87
L12	N57° 04' 20"W	26.27
L13	S69° 42' 50"E	43.62
L14	S17° 02' 25"E	10.40

WETLANDS CANAL 2		
LINE#	DIRECTION	LENGTH
L15	S82° 07' 09"W	6.10
L16	N73° 03' 49"W	61.28
L17	N51° 30' 15"E	13.26
L18	N13° 01' 17"E	59.89
L19	S70° 15' 20"E	47.08
L20	S05° 58' 32"W	36.31
L21	S00° 29' 17"E	31.60

N: 464310.99
E: 871764.34

BEGINNING OF LIMITS
OF INVESTIGATION

WETLANDS CANAL 2
3,652 SF
0.0838 ACRES

SHELL
ROAD

N: 464383.70
E: 871561.75

HARRY DRIGGERS BLVD

APPARENT R/W

N: 464169.81
E: 871713.66

WETLANDS CANAL 1
810 SF
0.0186 ACRES

N: 464204.84
E: 871616.07

N: 464257.80
E: 871468.51

SHELL
ROAD

WETLANDS DITCH
252 SF
0.0058 ACRES

APPARENT R/W



WETLANDS EXHIBIT 2

SANITARY SEWER FORCE MAIN IMPROVEMENTS
HARRY DRIGGERS BOULEVARD (SPLOST III)
1356TH GMD, GLYNN COUNTY, GEORGIA

Prepared for:

BRUNSWICK-GLYNN JOINT WATER & SEWER COMMISSION



GRAPHIC SCALE: 1" = 60'

PROJECT NO.: 17-5040
DRAWN BY: REB
DESIGNED BY: JH
SURVEYED BY: JH
SURVEY DATE: 10-16-2017
CHECKED BY: TWB
SCALE: 1" = 60'
DATE: 03-14-18

SHEET

2

OF 5

emc ENGINEERING SERVICES, INC.
504 Gloucester Street
Brunswick, GA 31520
Ph: (912) 235-7838
Fax: (912) 233-4580
emc@emc-eng.com
www.emc-eng.com

Land Surveying Firm No. 000051

LINE#	DIRECTION	LENGTH
L22	S18° 03' 52" W	7.61
L23	S17° 51' 35" W	27.46
L24	N35° 48' 43" W	8.08
L25	N16° 00' 15" E	22.27
L26	N59° 59' 04" E	10.82

WETLANDS 1

WETLANDS 2

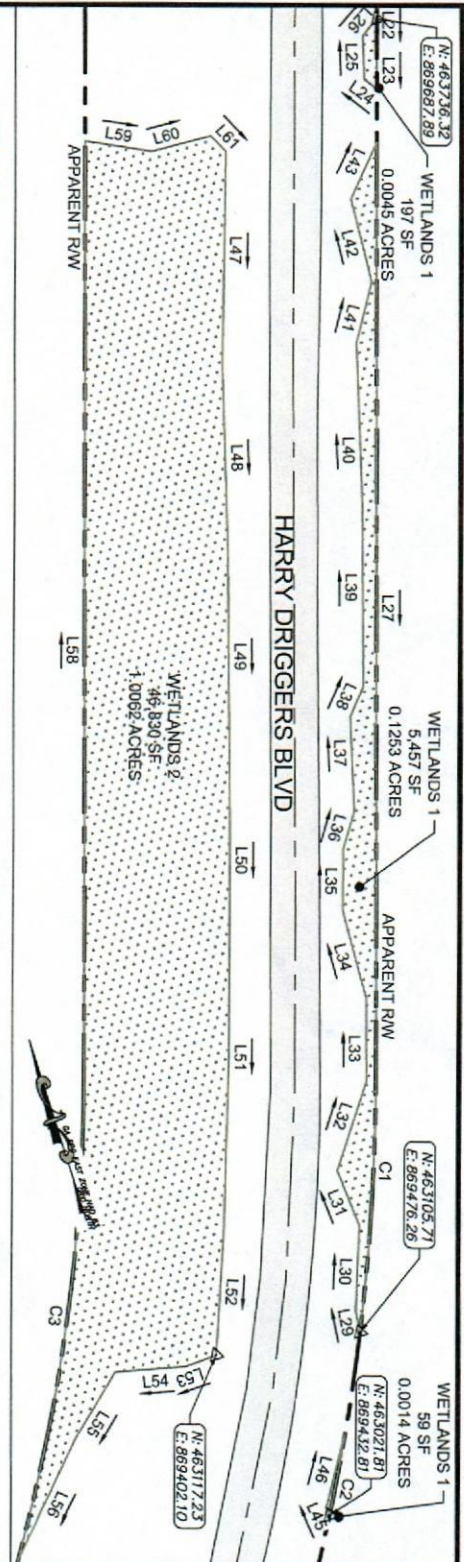
WETLANDS 1

LINE#	DIRECTION	LENGTH
L27	S17° 51' 35" W	472.10
L29	N06° 11' 39" E	11.01
L30	N20° 15' 51" E	43.42
L31	N04° 24' 09" W	30.02
L32	N36° 11' 06" E	47.85
L33	N17° 25' 35" E	42.54
L34	N02° 18' 15" E	45.51
L35	N18° 18' 33" E	31.70
L36	N34° 38' 00" E	19.75
L37	N15° 22' 52" E	48.22
L38	N41° 44' 18" E	16.57
L39	N17° 26' 11" E	93.39
L40	N15° 43' 52" E	80.67
L41	N32° 15' 01" E	31.49
L42	N03° 23' 47" E	42.88
L43	N42° 10' 57" E	32.20

LINE#	DIRECTION	LENGTH
L47	S18° 45' 34" W	108.24
L48	S16° 05' 41" W	96.84
L49	S17° 25' 30" W	137.27
L50	S18° 03' 30" W	118.41
L51	S18° 03' 30" W	118.41
L52	S21° 24' 40" W	63.75
L53	S87° 47' 46" W	16.57
L54	N77° 02' 30" W	36.48
L55	S48° 40' 14" W	38.55
L56	S43° 16' 19" W	70.08
L58	N17° 51' 35" E	472.64
L59	S63° 03' 55" E	34.65
L60	S87° 10' 00" E	31.40
L61	S25° 08' 56" E	11.25

LINE#	DIRECTION	LENGTH
L45	N06° 28' 26" W	4.12
L46	N32° 04' 37" E	40.05

CURVE #	BEARING	CHORD	RADIUS	ARC
C1	S21° 21' 30" W	131.20	1075.00	131.28
C2	S28° 44' 16" W	43.40	1075.00	43.40
C3	N25° 38' 03" E	290.28	925.00	251.03



WETLANDS EXHIBIT 3

SANITARY SEWER FORCE MAIN IMPROVEMENTS
HARRY DRIGGERS BOULEVARD (SPLOST III)
1356TH GMD, GLYNN COUNTY, GEORGIA
Prepared for:
BRUNSWICK-GLYNN JOINT WATER & SEWER COMMISSION



PROJECT NO.: 17-5040
DRAWN BY: REB
DESIGNED BY: JH
SURVEYED BY: JH
SURVEY DATE: 10-16-2017
CHECKED BY: TW
SCALE: 1" = 60'
DATE: 03-14-18

EMC ENGINEERING SERVICES, INC.
504 Gloucester Street
Brunswick, GA 31520
Phone: (912) 233-4380
Fax: (912) 233-4380
www.emc-eng.com

Land Surveying Firm No. 000051

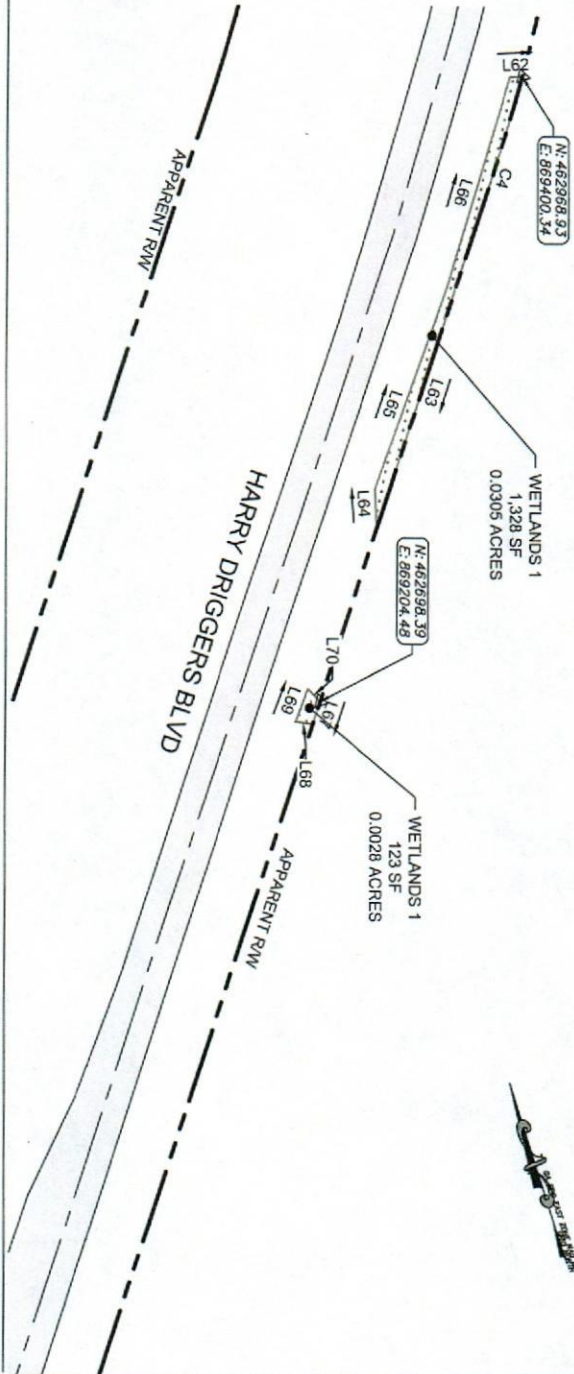
CURVE TABLE				
CURVE #	BEARING	CHORD	RADIUS	ARC
C4	S34° 40' 28" W	55.24	1075.00	55.25

WETLANDS 1		
LINE #	DIRECTION	LENGTH
L62	S74° 53' 25" E	6.37
L63	S36° 08' 50" W	185.51
L64	N14° 33' 57" E	19.71
L65	N37° 42' 12" E	108.48
L66	N34° 34' 48" E	111.73

WETLANDS 1		
LINE #	DIRECTION	LENGTH
L67	S36° 08' 50" W	11.98
L68	S63° 25' 11" E	8.84
L69	N38° 42' 24" E	17.53
L70	N26° 43' 55" W	8.91

WETLANDS 1

WETLANDS 1



WETLANDS EXHIBIT 4

SANITARY SEWER FORCE MAIN IMPROVEMENTS
HARRY DRIGGERS BOULEVARD (SPLOST III)
1356TH GMD, GLYNN COUNTY, GEORGIA

Prepared for:

BRUNSWICK-GLYNN JOINT WATER & SEWER COMMISSION



PROJECT NO.: 17-5040
DRAWN BY: REB
DESIGNED BY: REB
SURVEYED BY: JH
CHECKED BY: TWH
SCALE: 1" = 60'
DATE: 03-14-18

GRAPHIC SCALE: 1" = 60'

SHEET
4
OF 5

emc
EMC ENGINEERING SERVICES, INC.
504 Gloucester Street
Brunswick, GA 31520
Ph: (912) 265-7636
Fax: (912) 233-4800
www.emc-eng.com
brunswick@emc-eng.com

Land Surveying Firm No. 000051

APPARENT RW

HARRY DRIGGERS BLVD

APPARENT RW

WETLANDS 3
1,628 SF
0.0374 ACRES

N: 460955.88
E: 967931.62



WETLANDS 3

WETLANDS LINE TABLE

LINE #	DIRECTION	LENGTH
L71	S36° 08' 49" W	108.06
L72	N75° 18' 22" W	15.87
L73	N36° 20' 39" E	48.85
L74	N36° 52' 20" E	69.50
L75	S35° 47' 58" E	14.43

WETLANDS EXHIBIT 5

SANITARY SEWER FORCE MAIN IMPROVEMENTS
HARRY DRIGGERS BOULEVARD (SPLOST III)
1356TH GMD, GLYNN COUNTY, GEORGIA

Prepared for:

BRUNSWICK-GLYNN JOINT WATER & SEWER COMMISSION



GRAPHIC SCALE: 1" = 60'

PROJECT NO.: 17-5040
DRAWN BY: REB
DESIGNED BY: REB
SURVEYED BY: JH
SURVEY DATE: 10-16-2017
CHECKED BY: TWH
SCALE: 1" = 60'
DATE: 03-14-18

SHEET

5

OF 5

emc
EMC ENGINEERING SERVICES, INC.
1000 Peachtree Industrial Blvd., Suite 200
Buckley, GA 31500
Ph: (912) 265-7630
Fax: (912) 253-4560
www.emc-eng.com