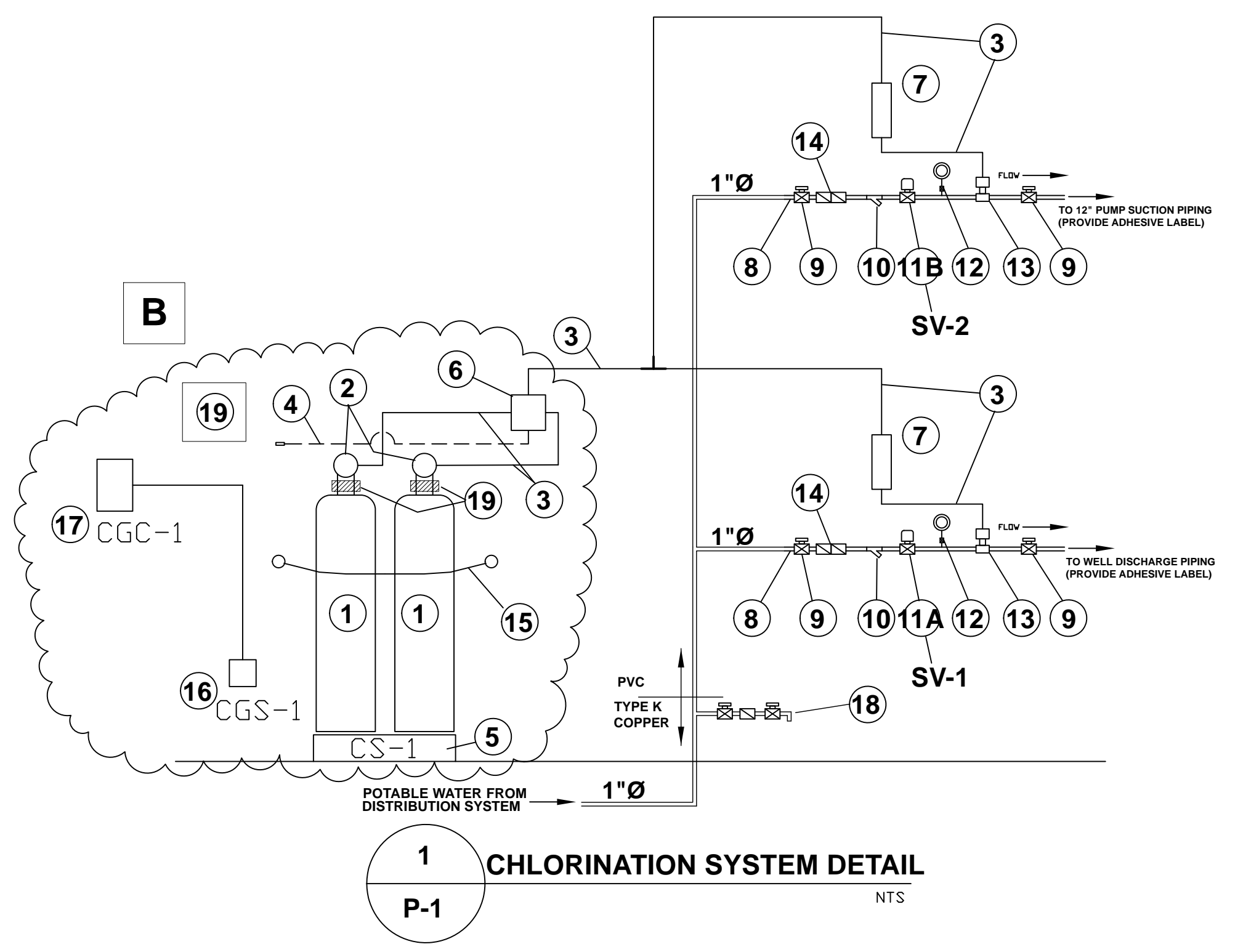
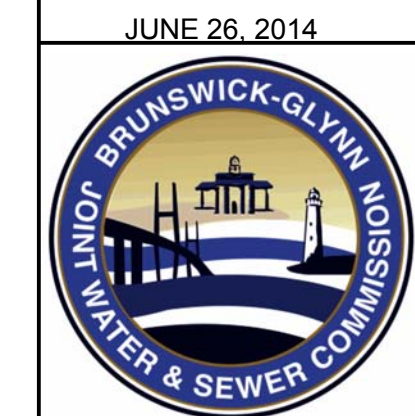
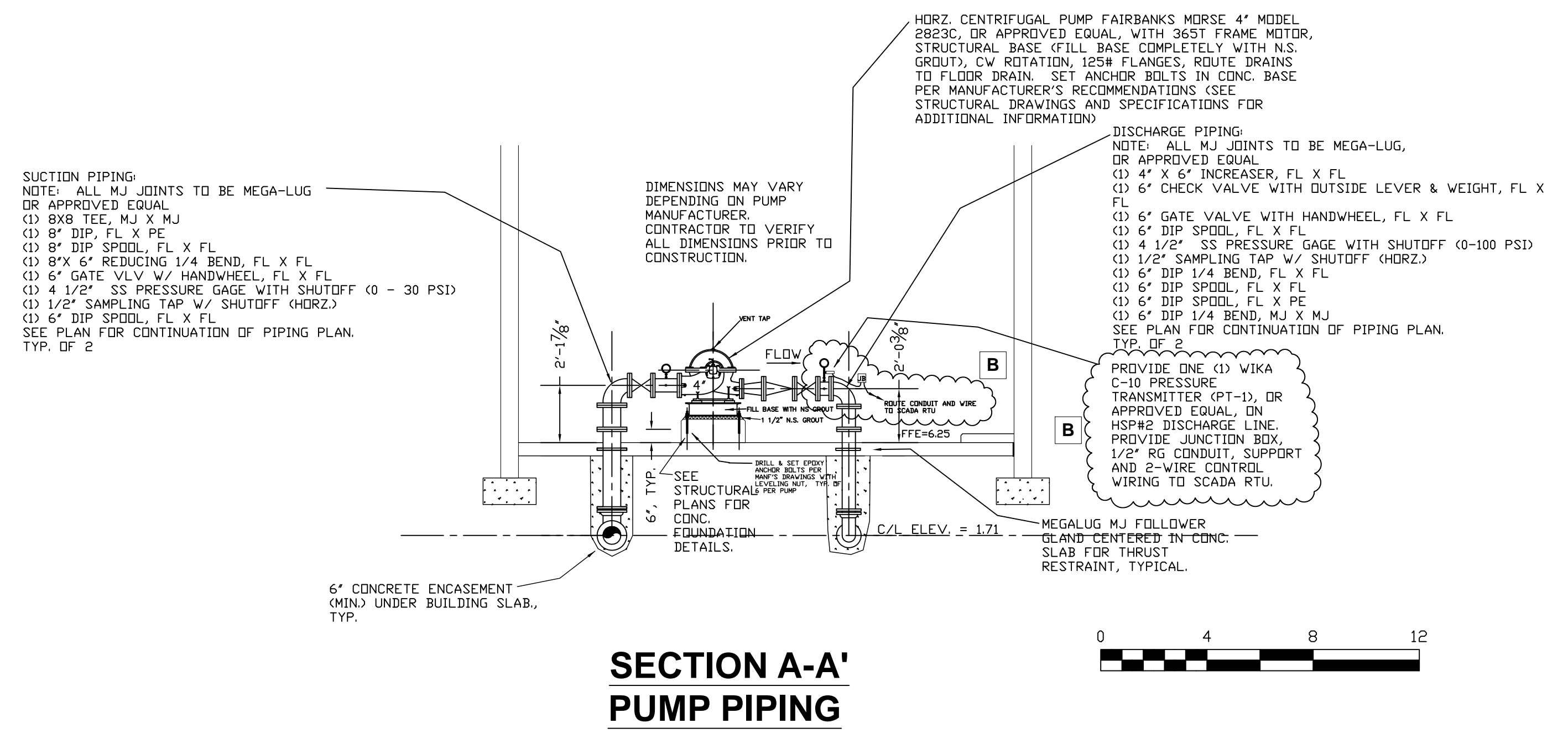
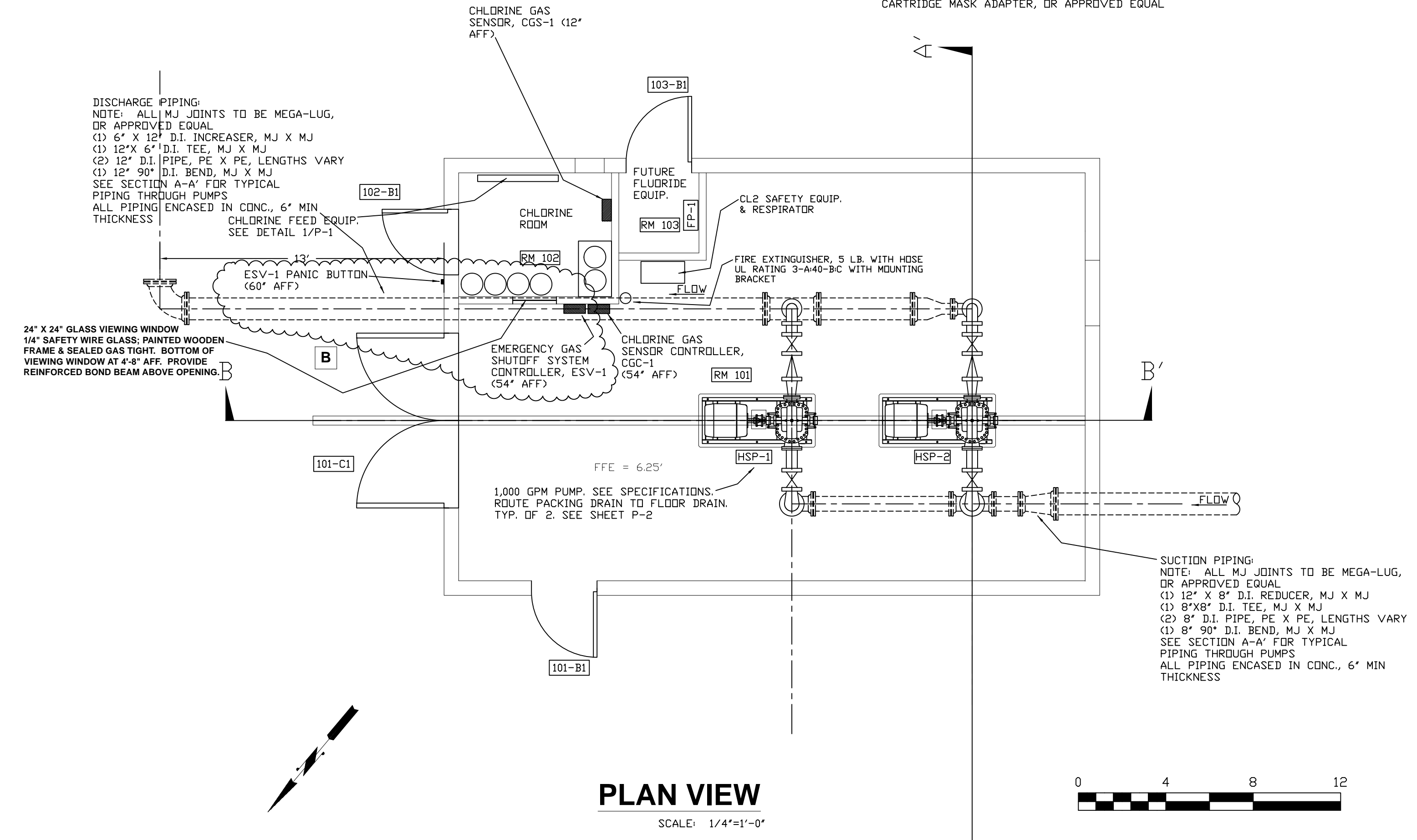


Mark	# Req'd	Description
1	6	150# Chlorine Cylinder (2 connected & 4 spare. Owner furnished)
2	2	Positive yoke clamp and Cl ₂ Latching Auto-switchover Vacuum Regulator, Superior VR-16, or app. equal
3	NA	Vacuum Tubing (length as required). Provide tee to supply two (2) chlorinators
4	1	Vent to outside building with Corrosion Proof insect screen
5	1	Dual Digital Chlorine Scales (CS-1), ± 1% accuracy & Remote Digital Indicator (Electronic Chlor-Scale GR150-2, chaining bracket & Solo G2 remote indicator with 4-20 mA output signal) (B)
6	1	Pressure Relief/Vent Valve, Superior SPR-1, or approved equal
7	2	Remote Meter Tube / Rate Valve, Superior RM-1, or approved equal – 100 ppd
8	NA	1" Schedule 40 PVC attached to wall with fiberglass Unistrut & SS conduit clamps. (Length as required)
9	4	1" PVC Ball Valve
10	2	1" PVC Wye Strainer
11A	1	1" NC Solenoid Valve (SV-1) (Wired to energize (open) when well is running) – 120VAC
11B	1	1" NC Solenoid Valve (SV-2) (Wired to energize (open) when either High Service Pump is running) – 120VAC
12	2	4" Ø 100 psi Pressure Gage with shutoff valve
13	2	Chlorine Pressure Ejector / Check Valve Assembly, Superior EJ-1, or approved equal
14	2	Double Check Valve, Zum Wilkins Model 705, or approved equal
15	2	SS eye bolts with safety chain and catch. (Provide additional safety chain assembly for spare cylinders.)
16	1	Chlorine Gas Detector (CGS-1) – Sensor/transmitter, Acutec 35 Gas Detection System with Auto-test facility gas generator option. Mount 12" AFF (B)
17	1	Chlorine Gas Detector Controller (CGC-1) & Calibration Equipment – Receiver Module, Acutec 35 Gas Detection Monitor with Power Supply module, Control Enclosure, audible & visual alarms and Battery Back-Up System (B)
18	1	3/4" bronze gate valve, double check valve and hose bib assembly. Wall mount with fiberglass unistrut & SS hardware.
19	1	(ESV-1) Emergency Shutoff System for Dual 150# cylinders, Halogen Model CR-1Y II Controller with Emergency Panic Button, connection to CGC-1 (shutoff system to be activated at the "Alarm Level" setpoint of CGC-1), two (2) Eclipse Actuators, two (2) auxiliary yoke valves for auto-switchover vacuum regulators (Model 2202.00-A)



NOTES: CHLORINE RESPIRATOR EQUIP. PROVIDE AND INSTALL THE FOLLOWING:
 (1) UNIVERSAL ABS SCBA WALL CASE
 (2) SCOTT ACS SCBA (NIDSH APPROVED) WITH FULL FACEPIECE (AV-2000), MULTI-PURPOSE CHEMICAL FILTERS FOR CL₂ GAS (3 SETS), DUAL CARTRIDGE MASK ADAPTER, OR APPROVED EQUAL



Elmo A. Richardson, Jr., P.E., LLC
 CONSULTING ENGINEERS
 4875 RIVERSIDE DRIVE, SUITE 101
 MACON, GEORGIA 31210
 PHONE: 478.257.1583
 FAX: 478.257.1583

NO.	DATE	REVISIONS
A	10/24/14	ISSUED FOR PERMIT
B	4/9/15	ADDED PRESS. TRANSMITTER AND CHLORINE SYSTEM MODIFICATIONS

**BRUNSWICK - GLYNN COUNTY
 JOINT WATER & SEWER COMMISSION
 HAMPTON PLANTATION
 WATER PRODUCTION FACILITY
 PUMP PIPING**

PROJECT: JWSC PROJECT# SS-2013-0010
 DATE: MAY, 2014
 SCALE: AS SHOWN
 DRAWING CHECKED BY:
P-1
 OF