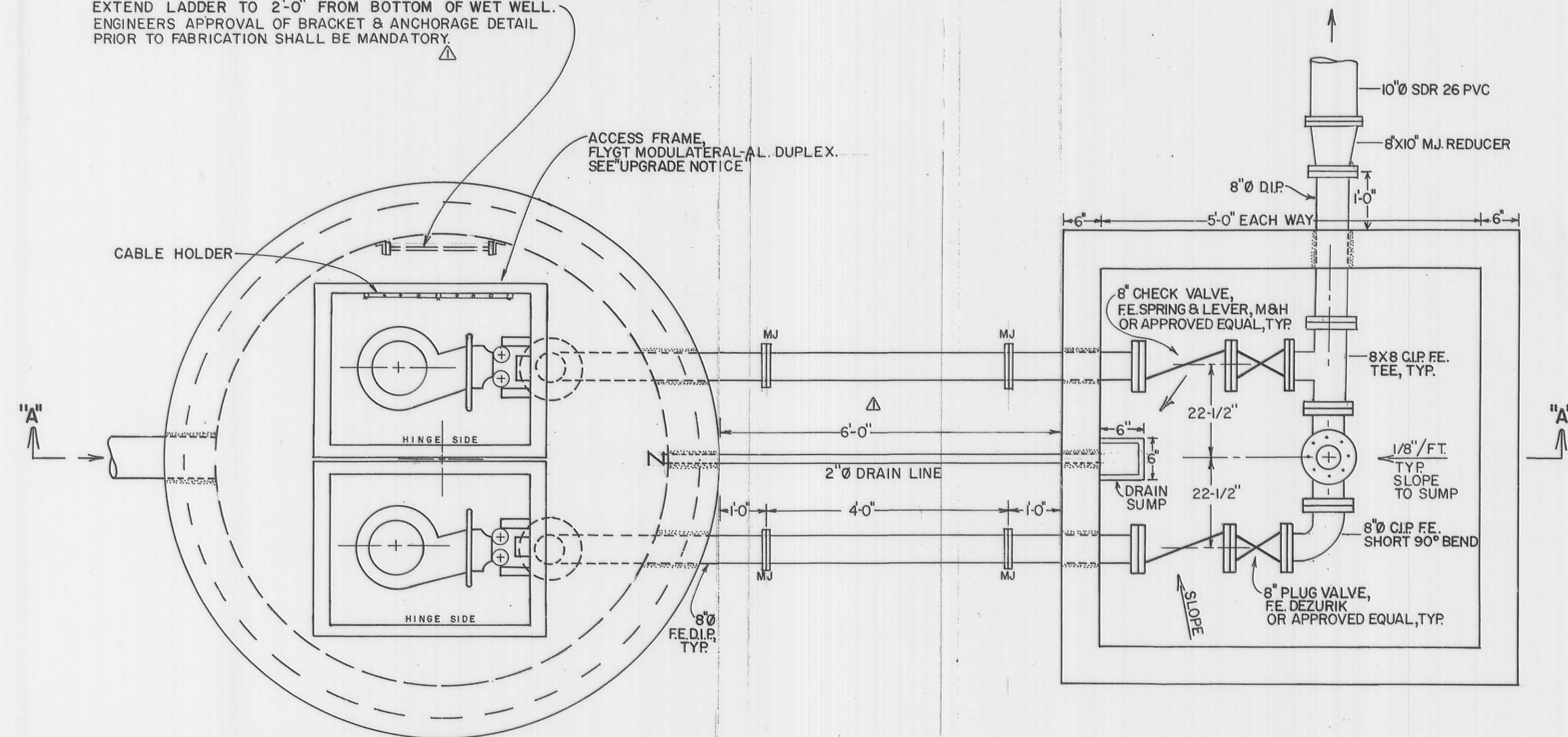
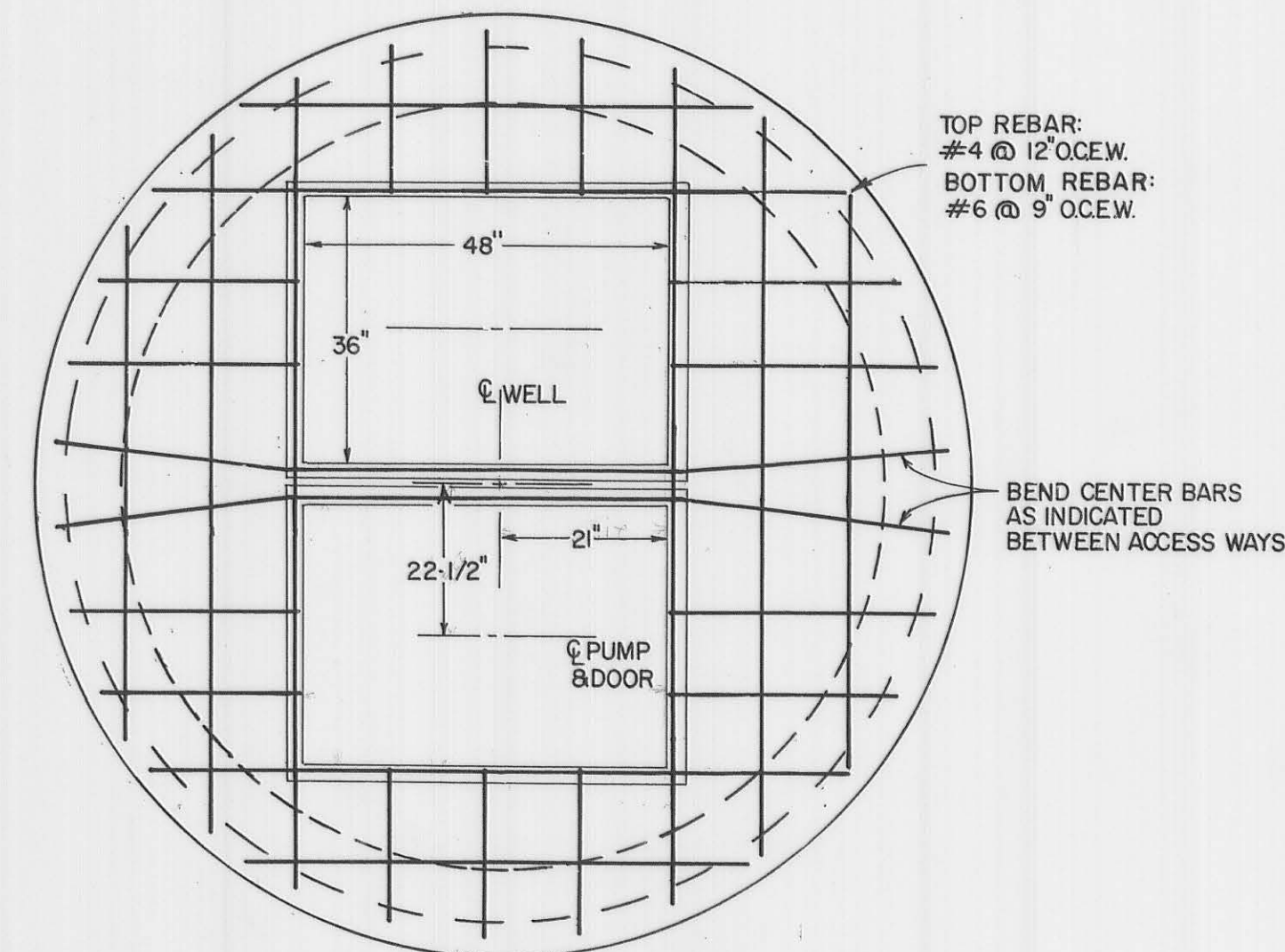


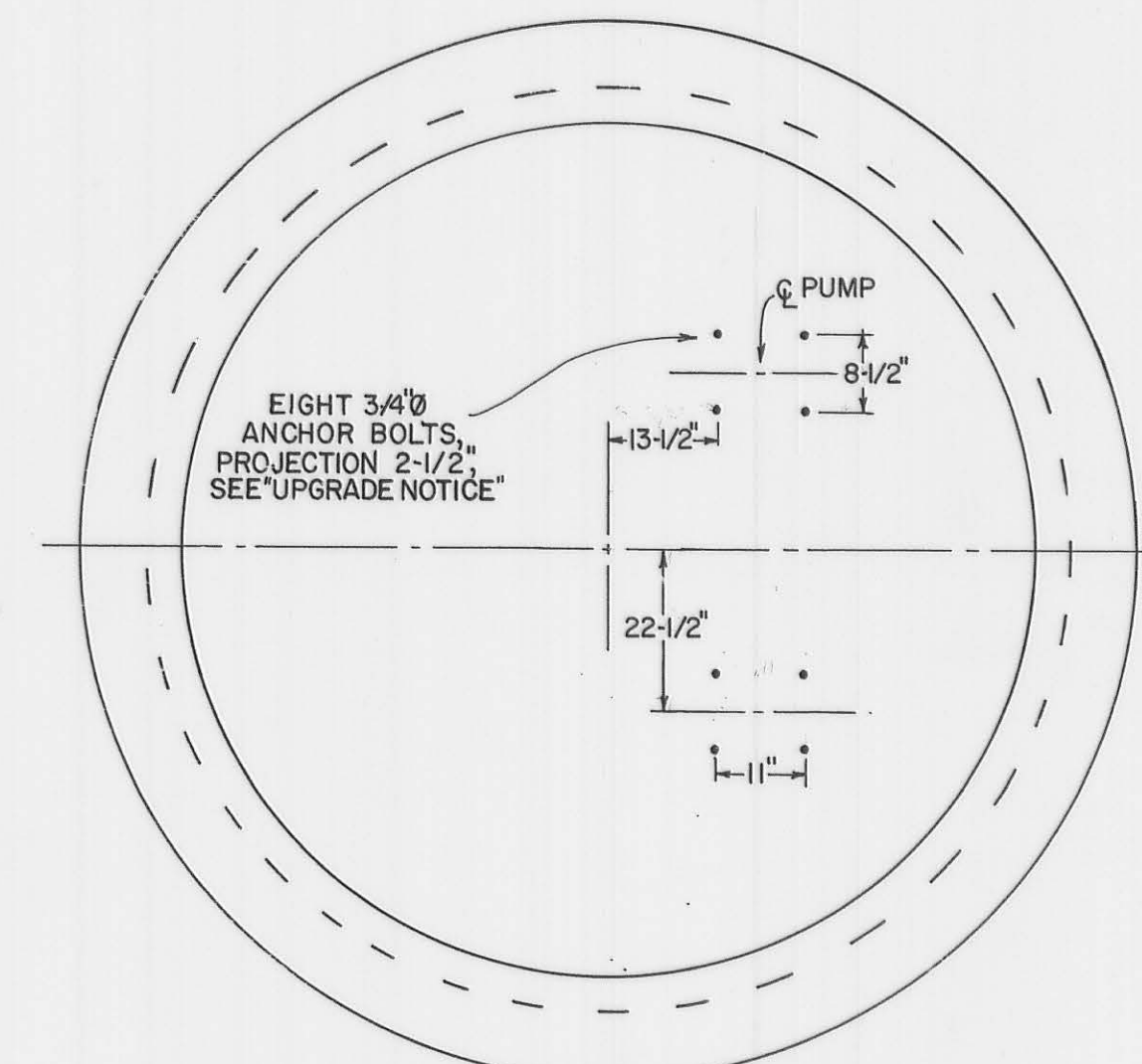
24" WIDE HEAVY DUTY ALUMINUM ACCESS LADDER
SECURED BY ALUM. 1/2" X 3" FABRICATED ANGLES
& 3/8" Ø STAINLESS STEEL FASTENERS & CONC. ANCHORS.
EXTEND LADDER TO 2'-0" FROM BOTTOM OF WET WELL.
ENGINEERS APPROVAL OF BRACKET & ANCHORAGE DETAIL
PRIOR TO FABRICATION SHALL BE MANDATORY.



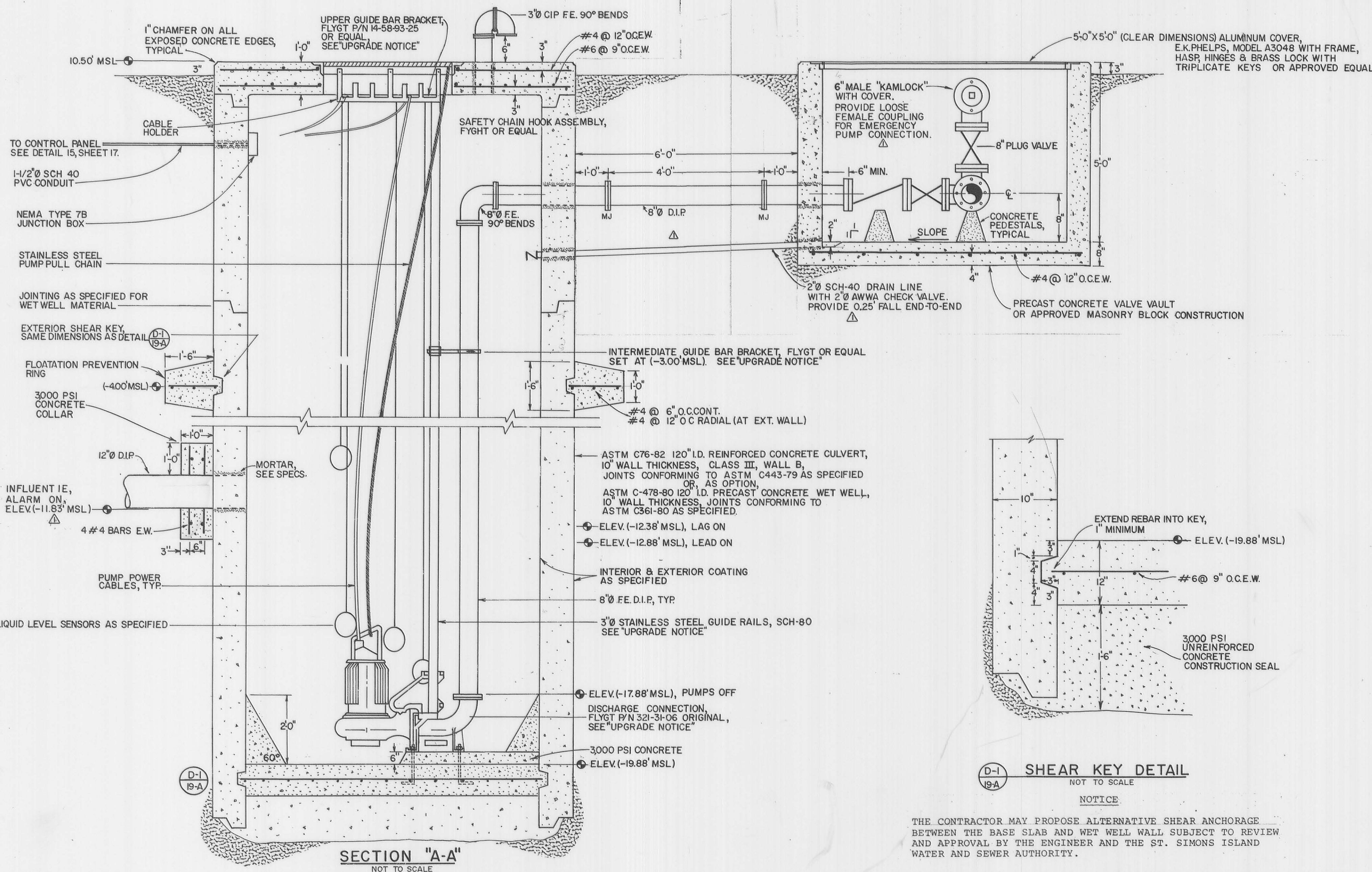
PLAN VIEW - GRADE ELEVATION
NOT TO SCALE



ROOF SLAB REINFORCEMENT
NOT TO SCALE



PLAN VIEW-BASE ELEVATION
NOT TO SCALE



SECTION "A-A"
NOT TO SCALE

SHEAR KEY DETAIL
NOT TO SCALE

THE CONTRACTOR MAY PROPOSE ALTERNATIVE SHEAR ANCHORAGE
BETWEEN THE BASE SLAB AND WET WELL WALL SUBJECT TO REVIEW
AND APPROVAL BY THE ENGINEER AND THE ST. SIMONS ISLAND
WATER AND SEWER AUTHORITY.

UPGRADE NOTICE

1. INITIAL PUMP INSTALLATION SHALL BE FLYGT DUPLEX 8" DIAMETER MODELS CP-3152, 152-434, IMPELLERS. ALL RAIL SIZES, SPECIAL GUIDE BRACKETS, HATCHWAYS, PUMP ACCESSORY FITTINGS AND ELECTRICAL CONTROLS SHALL BE SIZED AND INSTALLED TO INSURE COMPATIBILITY FOR UP-GRADING OF THE STATION ONLY BY THE REMOVAL OF THE 8" DIAMETER CP-3152 PUMPS AND THE INSTALLATION OF FLYGT DUPLEX 8" DIAMETER MODEL CP-3201, HH 201-452 IMPELLER PUMPS.
2. THE INITIAL INSTALLATION SHALL INCLUDE ALL RAIL, GUIDES, HATCHWAYS, FITTINGS AND ELECTRICAL CONTROLS AND WIRING FOR THE CP-3201 PUMPS. THE CP-3152 PUMPS INSTALLED SHALL BE MODIFIED AS REQUIRED TO INSURE THIS INTERCHANGABILITY.
3. FURNISH AND INSTALL TWO FLYGT MODEL CP-3152, 152-452 IMPELLER, 8" DIAMETER DISCHARGE, TOTALLY SUBMERSIBLE SEWAGE PUMPS. MOTORS SHALL BE NONOVERLOADING AT ANY POINT ON THE PUMP CURVE. EACH UNIT SHALL BE EQUIPPED WITH A 20 HP, 230 VOLTS, 3 PHASE, 60 HZ MOTOR. EACH PUMP SHALL BE CAPABLE OF DELIVERING 450 G.P.M. AT 62 FEET T.D.H.

CONTROL SPECIFICATIONS

1. THE DUPLEX PUMP PANEL SHALL HAVE A NEMA 3R FLYGT OR EQUAL ENCLOSURE WITH PROVISIONS FOR PADLOCKING DOOR AND A DEAD FRONT INNER DOOR FOR MOUNTING CONTROLS. ALL EXTERIOR HARDWARE AND HINGES SHALL BE STAINLESS STEEL. ELECTRICAL LAYOUT DRAWINGS AND COMPLETE PARTS LIST SHALL BE SUBMITTED FOR APPROVAL COMPLETE WITH BILL OF MATERIAL BEFORE MANUFACTURE. THE PANEL SHALL BE FACTORY TESTED AS A COMPLETE UNIT PRIOR TO DELIVERY. TWO SETS OF DRAWINGS SHALL ACCOMPANY PANEL. SEE SPECIFICATIONS FOR SPECIAL EQUIPMENT AND ALARM ACCESSORIES.
2. THE ALARM LIGHT AND CLAXON SHALL BE WIRED TO LEAVE THE LIGHT ON AFTER AN ALARM SIGNAL EVEN THOUGH THE WET WELL LEVEL LATER FALLS BELOW THE "ALARM ON LEVEL". THE CLAXON SHALL TURN OFF AUTOMATICALLY WHEN THE WET WELL LEVEL FALLS BELOW THE "ALARM OFF LEVEL".

ATTACHMENT "C"
(SHEET 2 OF 2)

REVISD 7/14/83 TO SEPERATE WET WELL & VALVE PIT; ADD NOTE

G. ROBERT GEORGE & ASSOCIATES, INC. CONSULTING ENGINEERS	TITLE PUMP STATION	SEA PALMS HEALTH & RACQUET CLUB SEA PALMS WEST ST. SIMONS ISLAND, GA.	SEA PALMS DEVELOPMENT CORP.	DESIGNED BY: G. R. GEORGE
				DRAWN BY: K
				JOB NO.: 337-4.1
				DATE: MAY 27, 1983
				SHEET 19-A